

HUSSMANN®

EcoShine LED Lighting System

*For Hussmann Reach-Ins and Walk-Ins With
Innovator Doors and Innovator II Doors*

*Always Working
to Protect The
Environment*

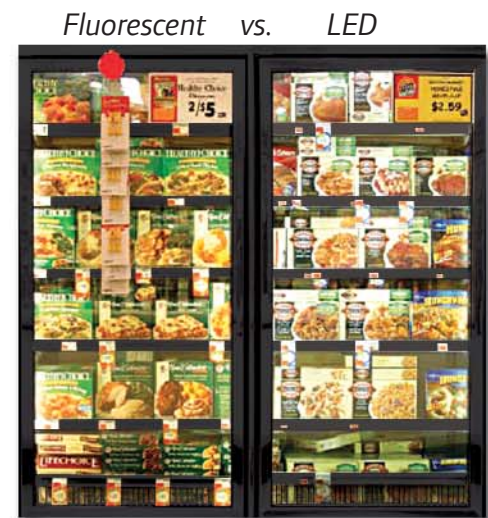


Enter a New Lighting Era With EcoShine LED Lighting System for Hussmann Reach-Ins & Walk-Ins



The new EcoShine LED lighting system for Hussmann Reach-Ins and Walk-Ins is ushering in a new era in refrigerated display lighting for supermarkets. Hussmann's EcoShine LED lights use far less energy, are more durable and provide more even illumination than fluorescents.

Shoppers see products brightly illuminated as they walk down your aisles. Compare for yourself, and see why LED lighting from Hussmann is the look of things to come.



	Value (Benefits)	HOW (Metrics)	T8 Fluorescent	Hussmann EcoShine
MERCHANDISING	Guide Shoppers to frozen food aisle through superior product visibility	Illuminance at ends of shelf (Lux)	4000+	2200+
		Illuminance at center of shelf (Lux)	600-800	1600-1800
		Lighting distribution horizontally	Uneven (4:1)	Even (1.25:1)
		Uniform lighting vertically	Medium	High
GREEN	Energy savings	No visible light source through superior design optimization	Light source visible	Light source concealed
		Direct lighting power consumption/door W (AC)	72W	27W
		Indirect refrigeration power/door W (AC)	37W	14W
		% Savings over T8 fluorescent	0%	63%
	Annual reduction in electric cost \$/door @ 12 cents/KWH	\$0/door/yr	\$71/door/yr	
	Rebate eligibility	Luminaire efficacy (lm/w)	~ 35	~ 42
	LifeCycle value	Annual relamping & maintenance cost	~ \$20/door/yr	~ \$0/door/yr

Lower Energy Cost: Up to 63% Reduction in Energy!

Hussmann's new EcoShine LED lighting system will reduce energy consumption by up to 63% versus T-8 fluorescents. Direct lighting energy costs are reduced by 42%, also reducing the heat inside the case. This provides an additional 21% in compressor energy savings.

Hussmann's Dimming Sensor/LED Solution Saves Even More Energy!

Hussmann is the first to offer a sensor for LED lights to control dimming or on/off operation. You can save 83% in energy (over T8 fluorescent with sensor) by dimming lights down to 20% of the original light level. Further, EcoShine LED lights can be turned on and off in a cold environment with no warm up time and no negative impact on lamp life.



The motion sensor defaults to 20% light level, but it can be set at 0% (off) or 50%. The sensor can be easily turned off to keep the lights on. When using the sensor, it will dim the lights after no motion is detected in the aisle for 30 seconds. Once motion is detected, the lights will ramp up to 100% in just over a second.

More Uniform Product Illumination

With fluorescent tubes, product facings can be much brighter at the end of each shelf than in the center of the shelf. This creates a perceived channel of darkness in the center of each door.

With EcoShine LED lighting, the light is spread much more evenly across the entire shelf. The LEDs are brighter than fluorescents, with up to 1800 Lux at the center of the shelf measured at a distance of three inches from the mullion. Also, EcoShine LED light fixtures are more consistent in brightness from one to the next, further enhancing lighting consistency.

Choose the Color Temperature That's Right for Your Products

EcoShine LED lighting systems for Hussmann Reach-ins are available in two color temperatures: 3500K (warmer red color) and 4100K (cooler blue color).

Extended Warranty

Hussmann EcoShine LED lights have superior reliability and durability. They are backed by a 5-year materials warranty on the LED light strips and on the power supply.

Better Durability: Extended Light Life

Hussmann EcoShine LED light fixtures normally perform for up to 100,000 hours. The LEDs lose 30% lumens after 5.7 years of 24 hour operation (or 7 years with dimming sensor). This will greatly reduce the number of re-lamps required and the associated labor costs.

New Stores, Remodels & Retrofits

Hussmann EcoShine LED lights and motion sensors can be installed in all new Hussmann Reach-ins and Walk-ins. The LEDs can also be easily retrofitted into existing cases and motion sensors can be added as an accessory. See your Hussmann sales representative about LED retrofits.



HUSSMANN®

Providing equipment and services to manage controlled-temperature environments for food and other perishables, our Climate Control Technologies sector encompasses both transport and stationary refrigeration solutions. Our product brands include Thermo King®, a world leader in transport temperature control systems, and Hussmann®, a manufacturer of refrigeration and food merchandising equipment.

www.thermoking.com www.hussmann.com www.ingersollrand.com

Hussmann Corporation
12999 St. Charles Rock Rd.
Bridgeton, MO 63044
Ph: 314-291-2000
Fax: 314-298-4756