

# Meat

*Curved Glass*

*Straight Glass*



## Merchandising Flair

Stylish curves combined with sleek design elements create enhanced product visibility. Granite or solid surface design allows for an amazing merchandising display unlike other service cases.

## Quality Fit & Finish

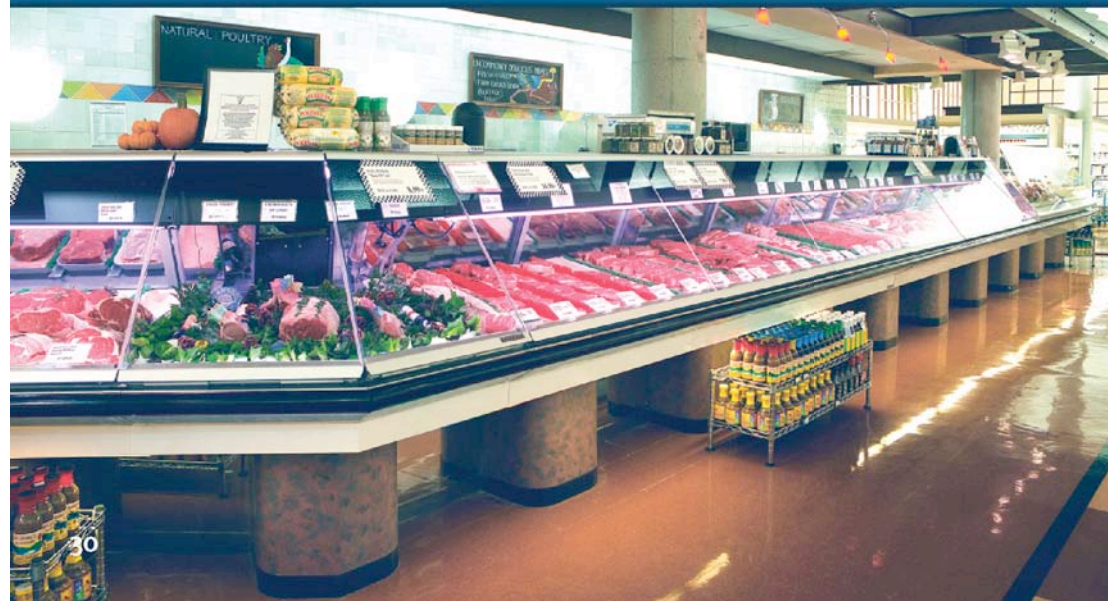
Designed for ease of installation; it has a simplified glass adjustment with a special alignment design that assures fit - does not require unsightly joint trim.

## Ergonomic Design

Large rear door opening and steep angle allows for ease of access to product.

**Q-Series**

> The Q-Series multi deck meat merchandisers will be available late 2007





SGVE with FMSS

*Service  
Self Service*



VGM with FMSS

> [www.hussmann.com/products/FMSS.htm](http://www.hussmann.com/products/FMSS.htm)

# Meat

## Stand Alone or Integrated Aged Beef Display



### Merchandising Flair & Flexible Design

Whether hanging beef or placing on racks the display make an incredible display above a service meat lineup.

Design allows for stand alone case or integrated into a meat cooler.

Design can also be set up as front or rear load with view end options.

AB

> [www.hussmann.com/products/AB.htm](http://www.hussmann.com/products/AB.htm)





R3-M/F

### Combination Merchandising

Service, self service and rear storage within the same footprint maximizes your meat department's capabilities. The R3 family has a new high volume service offering to extend your merchandising needs and its versatility extends even further with prep, hot, sushi and high volume configurations.

- > [www.husmann.com/products/R3.htm](http://www.husmann.com/products/R3.htm)
- > [www.husmann.com/products/R3-HV.htm](http://www.husmann.com/products/R3-HV.htm)



*Combination Merchandising*

*Curved Glass  
Straight Glass*