

## Modular Commercial-grade Modular Cabinetry Worksheet

Our ready-to-install modular line, has the appearance and construction of custom cabinetry without the cost.

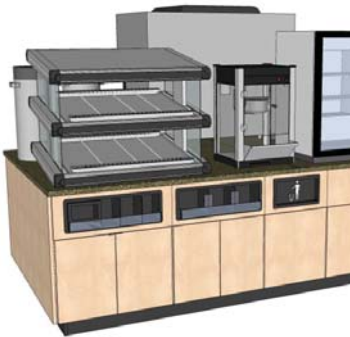


**This 8' wall cabinet run example shows** "Summer Flame" as the cabinetry color and "Madras Indian Slate" as the countertop color

Today's market is ever changing. Customers are now looking for healthy, fresh, and fast alternatives when it comes to their daily purchases. Our customers are always looking for new and inventive ways to provide these products to their customers. That's where Hussmann comes in.

We provide custom cabinetry that conforms to our highest quality standards for your transaction, coffee, cafe, and food program needs. Our solutions include the following styles: custom, modular, and ship-flat. This worksheet highlights our modular cabinetry line.

Each cabinet in this line is made to Hussmann's cabinetry standards and comes completely ready for installation. With individual accessory panels for each cabinet and inserts pre-installed for ease, our modular line has all the appearance of custom, without the cost.



**This 10' fast food island example shows** "Abracadabra" as the cabinetry color, "Rio Sands" as the countertop color

For a detailed quote on modular cabinetry, use this worksheet to determine what you need, then simply call our sales support staff at 800-966-4547. If you need assistance, just call us and we'll help!

### Cabinetry Standards

- Hussmann follows the Architectural Woodwork Institute guidelines for premium cabinet construction using quality materials and fabrication methods.
- Cabinet body, doors, accessory panels, and interior shelves are made from high density, industrial grade 3/4" melamine, not retail grade 5/8", to withstand high traffic and heavy loads.
- Fully-concealed, European-style hinges.
- All cabinet interiors are white with exterior color selections (see color section).
- Adjustable legs and toe kick included.
- All countertops are laminated. Rear transaction and wall cabinetry includes backer or backsplash.
- Accessory panel inserts or acrylic selections are available (see acrylic section).

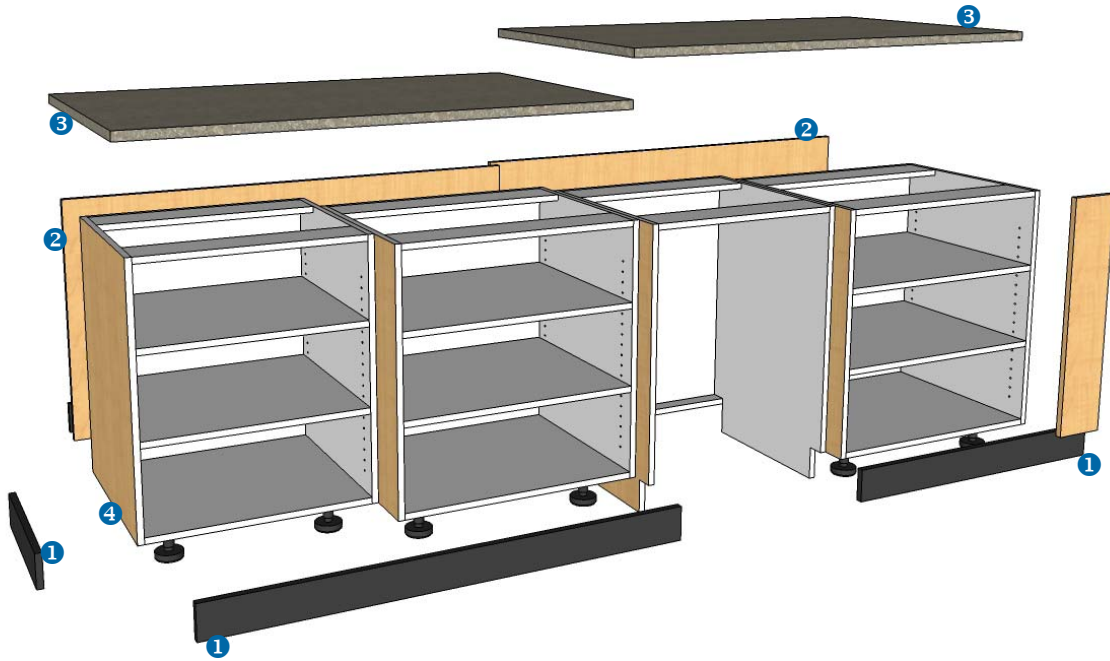


## Modular Cabinetry Exploded Views and Examples

This example illustrates a standard 10' (120") run of front transaction cabinetry. Each component arrives separately and can be assembled in any configuration you need. This cabinetry would support cash registers, lottery dispensers, and impulse sale items with ease.

**This sample shows:**

"Fidlar's Maple" as cabinetry and accessory panel color, "Beluga Beige" as countertop



- 1 Toe kick (4" h). This example shows three (3) 8' sections, that are trimmed to length in the field by your installer or carpenter.
- 2 Front panels (5' w by 2' 6-7/8" h). Shipped in two sections to reduce cost.
- 3 36" d countertop (5' 1/2" w). Shipped in two sections to reduce cost. Please see countertop section for more details.
- 4 Transaction cabinets (36" h by 112.5" w overall by 24" d). This examples includes (in order) a 27" w, 30" w, 25.5" w safe, and 30" w cabinets with a 6.5" w filler / void panel. The front panel fills out the length to 10' w.

Below is an example of a 10' run of cabinets with sample transaction equipment. There is a section on the fill-out form for laying out your cabinets. This will allow you to visually see if you have enough room for the equipment that you have in your store.



**Employee side:**

This 10' run has enough room for two registers and accommodates a cash safe.

**Customer side:**

This 10' run has enough room for 8' of under counter display shelving and peg hooks.

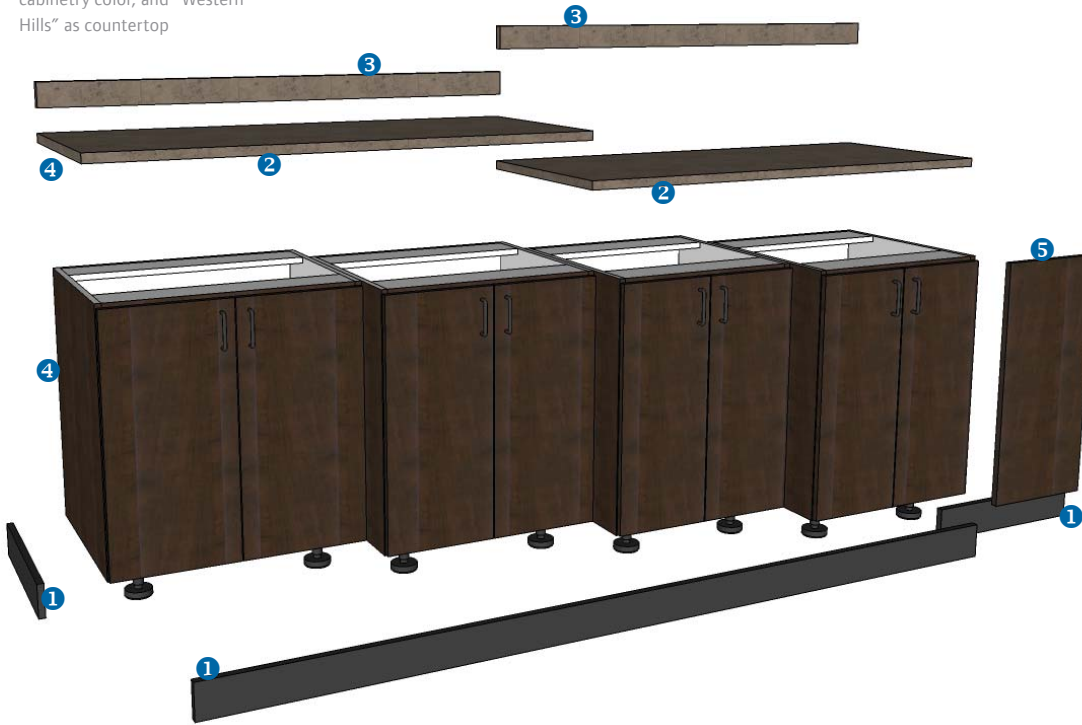


## Modular Cabinetry Exploded Views and Examples

This example illustrates a standard 10' (120") run of rear transaction cabinetry. Each component arrives separately and can be assembled in any configuration you need. This cabinetry would support any cigarette and tobacco merchandisers you would have.

### This sample shows:

"Chocolate Pear Tree" as cabinetry color, and "Western Hills" as countertop



- 1 Toe kick (4" h). This example shows two (2) 8' sections, that are trimmed to length in the field by your installer or carpenter.
- 2 26" d countertop (5' 1/2" w). Shipped in two sections to reduce cost. Please see countertop section for more details.
- 3 Back and side splash (3" h). Shipped in two sections to reduce cost.
- 4 Rear transaction cabinets (36" h by 105" w overall by 24" d). This examples includes (in order) a 30" w, 27" w, 24" w, and 24" w cabinets with a 14" w void.
- 5 Filler panel (14" w). This filler / void panels fills out the length to 10' w. Depending on width, these panels usually cover up voids between walls and cabinetry. A 24" w filler panel would have been ordered and trimmed to length in the field by your installer or carpenter.

This examples shows a standard 10' run of rear transaction cabinetry with three custom tobacco merchandisers (including cigarette pack pusher trays and shelves for carton displays). There is a section on the fill-out form for laying out your cabinets. This will allow you to visually see if you have enough room.



**Sample rear transaction counter includes:** "Rustik Cherry" as cabinetry and accessory panel color, "Madras Indian Slate" as countertop.

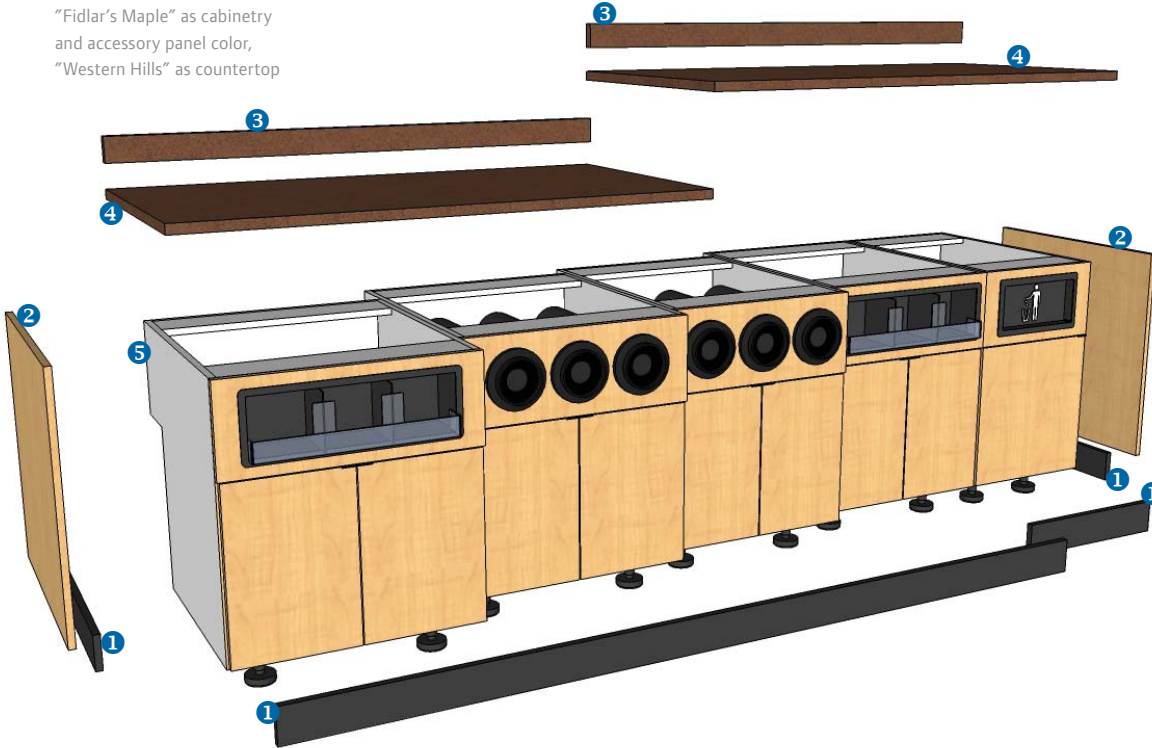


## Modular Cabinetry Exploded Views and Examples

This example illustrates a standard 10' (120") run of beverage / fast food wall cabinetry. Each component arrives separately and can be assembled in any configuration you need. This cabinetry would hold soda machines, food or coffee programs. There is a 6" chase to hold all mechanicals.

### This sample shows:

"Fidlar's Maple" as cabinetry and accessory panel color, "Western Hills" as countertop



- 1 Toe kick (4" h). This example shows two (2) 8' sections, that are trimmed to length in the field by your installer / carpenter.
- 2 End panels (30" w by 2' 4-7/8" h). End panels are needed to hide rear chase.
- 3 Back and side splash (3" h). Shipped in two sections to reduce cost.
- 4 32" d countertop (5' 1-3/4" w). Shipped in two sections to reduce cost. Please see our countertop section for more details.
- 5 Wall (or slot back) cabinets (34" h by 120" w overall by 30" d). This examples includes (in order) a 27" w with lid holder, a 27" with dispensers, a 24" w with dispensers, a 24" w with lid holder, and a 18" w waste cabinets.

Below are two examples of a 10' run of cabinets with retail programs. There is a section on the fill-out form for laying out your cabinets. This will allow you to visually see if you have enough room for the fast food / beverage programs you have in your store.



### Coffee & Bakery program sample 10' run:

"Midnight Stroll" as cabinetry and accessory panel color, "Fired Slate" as countertop



### Pizza & Sandwich program sample 10' run:

"Abracadabra" as cabinetry and accessory panel color, "Viola" as countertop

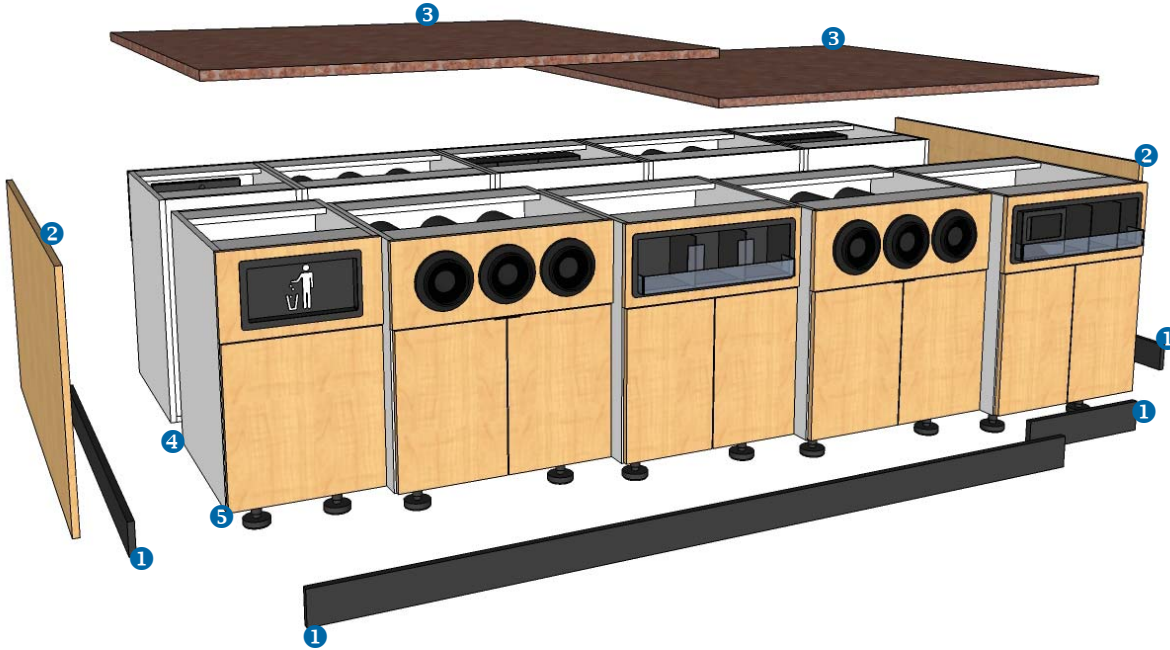


## Modular Cabinetry Exploded Views and Examples

This example illustrates a standard 10' (120") run of beverage / fast food island cabinetry. Each component arrives separately and can be assembled in any configuration you need. This cabinetry would hold soda machines, food or coffee programs. There is a 6" chase to hold all mechanicals.

### This sample shows:

"Fidlar's Maple" as cabinetry and accessory panel color, "Western Hills" as countertop



1 Toe kick (4" h). This example shows two (4) 8' sections, that are trimmed to length in the field by your installer / carpenter.

2 End panels (60" w by 2' 4-7/8" h). End panels are needed to hide rear chase.

3 60" d countertop (5' 1-3/4" w). Shipped in two sections to reduce cost.

4 A 8" gap is needed between cabinets to be used as a mechanical chase.

5 Island cabinets (34" h by 120" w overall by 24" d). This example shows a total of 10 cabinets. When ordering, please make sure to include both sides of the island.

Below are two examples of a 10' island run of cabinets with retail programs. There is a section on the fill-out form for laying out your cabinets. This will allow you to visually see if you have enough room for the fast food / beverage programs you have in your store.



**This 8' coffee & bakery island example shows** "Rustik Cherry" as cabinetry and accessory panel color, "Olive Organix" as countertop



**This 10' beverage island example shows** "Chocolate Pear Tree" as cabinetry and accessory panel color, "Oiled Soapstone" as countertop

# Specifications

## Countertops, Colors, Acrylics, Shelving, and Terms & Conditions

### Countertop & Back Splash

Please note that all countertops will arrive with seams unless under 6' in length is needed.

Seams are susceptible to water damage. *Make sure to seal properly on installation and keep your counters dry in order to avoid warping, delamination, and buckling.*

**Front transaction countertops** are made to have 9 1/4" overhang on the customer side, 1" overhang off the sides, and 2" overhang on the employee side. The 9 1/4" allows for under counter merchandising using slat wall or shelving. Back / side splash not provided.

**Rear transaction countertops** are made to have 2" overhang on the employee side and 1" overhang off the sides. Back / side splash will be provided for the entire length and depth. Cost of the splash is included in the price of the countertop.

**Beverage / Fast Food wall countertops** are made to have 2" overhang on the customer side and 1" overhang off the sides. Back splash and side splash will be provided for the entire length and depth. Cost of the splash is included in the price of the countertop.

**Beverage / Fast Food island countertops** are made to have 2" overhang on the cabinet face side and 1" overhang off the ends. Back splash and side splash will not be provided.

### Cabinetry Colors

Choices for exterior of the cabinetry are listed below. Each section of cabinetry (i.e. island different from transaction) can be a different color if needed.



### Countertop Colors

Choices for countertop is listed below. Each section of countertop (i.e. island different from transaction) can be a different color if needed.

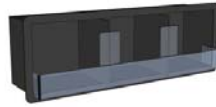


## Acrylic Inserts / Accessory Panel Additions

Below are the three standard inserts for beverage / fast food cabinetry accessory panels. Additional acrylics are available for purchase. Call for more details.



**Cup dispenser trio**  
Cost shown for three dispensers.



**Modular Insert**  
Comes with two dividers for lids or condiments.



**Modular w/Napkin**  
Comes with two dividers for lids or condiments.



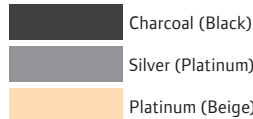
**Under counter Shelving** Ideal for impulse sale purchases, these standard shelving sets, including product stops, for purchase include:



**4'w section**  
2 uprights, 4 shelves



**3'w section**  
2 uprights, 4 shelves



Upright quantity will be different for larger orders. For example, if a total of 8'w of shelving is needed, three (3) uprights will be provided. A detailed shelving list will be provided on request. Store retail shelving options are also available. Call for details.

## Terms & Conditions

**Delivery / Freight** - All shipments made F.O.B. from Hussmann in Madison, Wisconsin, and not responsible for delays caused by circumstances beyond our control. *Packaging for shipment and freight is additional and will be quoted on per project basis.*



**Order Changes & Cancellations** - Prior to acceptance of order, terms, and conditions are subject to change without notice. Order changes and cancellations may result in a charge that reflects any materials, parts, or assemblies that are unique to the order.

**Limitation of Liability** - Hussmann will in no event be liable for indirect, special or consequential damages whatsoever from claims of breach of warranty negligence, strict liability or otherwise arising out of this agreement. Hussmann's liability under no circumstances will exceed the contract price of the goods for which liability is claimed.

**Terms of Payment** - Hussmann accepts credit card and checks as payment for projects. Checks will need to clear our bank account before production can begin. Hussmann does not store credit card information for future use.

**Non-transferable, Limited Warranty** - Hussmann warrants all new products to be free from defects in material and workmanship at the time of shipment. In the event of damage during shipping, Purchaser will be in charge of any and all freight claims between freight company and Purchaser. In the event of failure, the defective parts will be replaced without charge for the part for a period of (90) days from the day of shipment. Any alteration or repair by others in such a manner as in Hussmann's judgement materially and adversely affects the product shall void this warranty. Hussmann's obligation under this warranty shall not include any transportation charges or cost of installation or any liability for special, direct, indirect, or consequential damages of delay. This constitutes the only warranty of Hussmann's and no other warranty or condition, statutory or otherwise shall be implied.



## With Hussmann, your *one source solution specialist*, you gain a wealth of experience and support.

Our dedicated team can assist you with everything regarding your business, from concept to opening. The wide array of services we now offer include:

- Refrigerated equipment including walk-in coolers, freezers, and beer caves, as well as self-contained cases.
- Retail store layout and design including remodels and ground-up construction.
- Custom cabinetry and millwork including three distinct cabinetry lines.
- Store fixtures and equipment including branded merchandisers.
- Food service equipment including preparation refrigeration tables.
- Retail image graphics packages including paint schedules and signage.
- Energy efficient solutions including LED lighting and monitoring.
- 24 hour refrigeration and commercial HVAC service and
- Custom preventative maintenance and service programs.

For more detailed information on all our services, we invite you to please visit

[www.hussmann.com/cstore/solutions/](http://www.hussmann.com/cstore/solutions/)

For a detailed quote on modular cabinetry, use this worksheet to determine what you need, then simply call our sales support staff at **800-966-4547**. If you need assistance, just call us and we'll help!



Providing equipment and services to manage controlled-temperature environments for food and temperature sensitive products, this sector of our business encompasses both transport and stationary refrigeration solutions. Our product brands include Trane®, leader in integrating comfort and critical control solutions for high-performance buildings, Thermoking®, world leader in transport temperature control systems, and Hussmann®, a manufacturer of refrigeration and food merchandising equipment.

800-966-4547

[www.hussmann.com](http://www.hussmann.com) [www.thermoking.com](http://www.thermoking.com) [www.trane.com](http://www.trane.com) [www.ingersollrand.com](http://www.ingersollrand.com)