

NSF Certification

This merchandiser model is manufactured to meet NSF/ANSI (National Sanitation Foundation) Standard #7 requirements for construction, materials and cleanability.



Scan the QR code on your mobile device to access additional product information or order parts.

Parts may also be ordered at:

parts.hussmann.com

Call toll free: 1.855.487.7778

We reserve the right to change or revise specifications and product design in connection with any feature of our products. Such changes do not entitle the buyer to corresponding changes, improvements, additions or replacements for equipment previously sold or shipped.

Note: Revision M: July 2019. Updated Lighting and CaseShieldPTM.

Datasheet-Excel-D5X-RE

Engineering Plan Views

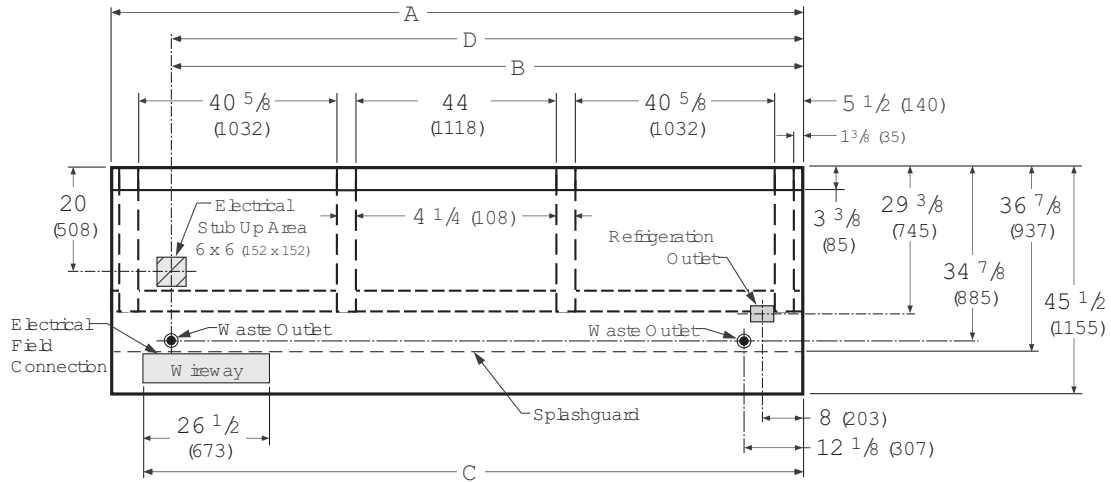
PHYSICAL DATA	
Merchandiser Drip Pipe (in.)	1 1/4
Merchandiser Liquid Line (in.)	3/8
Merchandiser Suction Line (in.)	7/8

Rear Load Dairy & Delicatessen

05-2009

D5X-R

Dimensions shown as in. and (mm).



NOTE: Case-to-Case Electrical Connections are made IN FRONT OF SPLASHGUARD.

FRONT

The **EXCEL** Rear Load Dairy & Delicatessen model is not offered in 4-ft or 6-ft length.

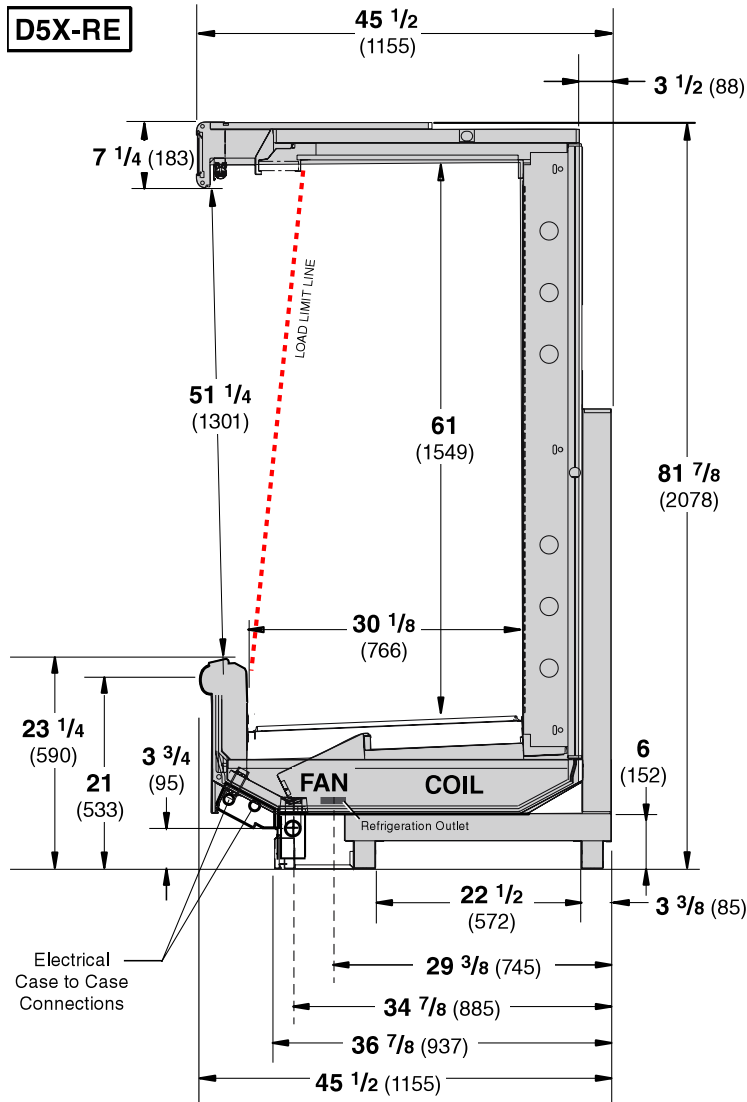
General	8 ft	12 ft
(A) Case Length (<i>without ends or partitions</i>) (Each end and insulated partition adds 1 1/2 in. (38 mm) to case line up.) Maximum O/S dimension of case back to front (<i>includes bumper</i>) Back of case to front of splashguard Back of case to O/S edge of front skid rail Width of skid rail RH end of case to outside edge of external support Distance between edges of external support and center support Distance between edges of center supports Distance between front skid rail and splashguard	96 3/8 (2448) 45 1/2 (1155) 36 7/8 (937) 29 1/2 (749) 2 3/8 (61) 5 1/2 (140) 40 5/8 (1032) NA 6 (152)	144 1/2 (3670) 45 1/2 (1155) 36 7/8 (937) 29 1/2 (749) 2 3/8 (61) 5 1/2 (140) 40 5/8 (1032) 44 (1118) 6 (152)
Electrical Service <input checked="" type="checkbox"/> (<i>Electrical Field Wiring connection point</i>)		
(B) RH End of case to center of stub up area Back of case to center of stub up area Length of electrical wireway	84 1/4 (2140) 20 (508) 26 1/2 (673)	132 3/8 (3363) 20 (508) 26 1/2 (673)
(C) RH End of case to LH end of wireway <input type="checkbox"/> Wireway	90 1/8 (2289)	138 1/4 (3511)
Waste Outlets (<i>One each end</i>) <input checked="" type="checkbox"/>		
(D) End of case to the center of farthest waste outlet End of case to the center of nearest waste outlet Back O/S of case to center of waste outlets Outside diameter of the drip pipe	84 1/4 (2140) 12 1/8 (307) 34 7/8 (885) 1 1/4 (32)	132 3/8 (3363) 12 1/8 (307) 34 7/8 (885) 1 1/4 (32)
Refrigeration Outlet <input checked="" type="checkbox"/>		
Back of case to center of refrigeration outlet RH end of case to center of refrigeration outlet	29 3/8 (745) 8 (203)	29 3/8 (745) 8 (203)

Multi-deck, 5 Display Levels with Sliding Rear Door



Hussmann refrigerated merchandisers configured for sale for use in the United States meet or surpass the requirements of the DOE 2017 energy efficiency standards.

Dimensions shown as in. and (mm).



Estimated Charge ***		D5X-RE	
8 ft	2.7 lb	43 oz	1.2 kg
12 ft	3.9 lb	62 oz	1.8 kg

***This is an average for all refrigerant types. Actual refrigerant charge may vary by approximately half a pound.

Excel D5X-RE
Dairy & Delicatessen

REFRIGERATION DATA

Note: This data is based on store temperature and humidity that does not exceed 75°F and 55% R.H.

	D5X-RE§
Discharge Air °F	32
Evaporator °F	24
Unit Sizing °F	22

§ Average evaporator temperature shown. Use dew point for high glide refrigerants for unit sizing. Care should be taken to use the dew point in PT tables for measuring and adjusting superheat. Adjust evaporator pressure as needed to maintain discharge air temperature shown.

Btu/hr/ft³ — Unlit Shelves^{††}

D5X-RE	Parallel	Conventional
UNLIT	1445	1540
PEG*	1565	1660

* Hussmann Peg Shelves (Deli only).

† Add 10 Btu/hr/ft per shelf row for LED fixtures.
Add 20 Btu/hr/ft per shelf row for fluorescent lamps.
Reduce refrigeration load by 15% if fitted with CaseShieldPTM.

DEFROST DATA

Frequency Hr	6
Defrost Water (lb/ft/day)	10.50
(± 15% based on case configuration and product loading).	

OFFTIME	D5X-RE
Temp Term °F	48
Failsafe Minutes	35

ELECTRIC OR GAS Not Recommended

Standard Defrost Thermostat

Close on rise: close 48°F — open 33°F

CONVENTIONAL CONTROLS

Low Pressure Backup Control

C/CO**	D5X-RE
	17°F / 7°F

Indoor Unit Only, Pressure Defrost

Termination** 48°F

**Use a Temperature Pressure Chart to determine PSIG conversions.

Excel D5X-RE
Dairy & Delicatessen

Electrical Data

The **EXCEL** Rear Load Dairy & Delicatessen model is not offered in 4-ft or 6-ft length.

Number of Fans—12W	Amperes		Watts	
	8 ft	12 ft	8 ft	12 ft
	4	6		
Evaporator Fan				
120V 50/60Hz Standard Energy Efficient	1.20	1.80	72	108
230V 50/60Hz Standard Energy Efficient	0.60	0.90	72	108
230V 60Hz Export	1.32	1.98	200	300
230V 50Hz Export	1.52	2.28	228	342
Minimum Circuit Ampacity				
120V 50/60Hz Standard Energy Efficient	1.40	2.00		
230V 50/60Hz Standard Energy Efficient	0.80	1.10		
230V 60Hz Export	1.52	2.18		
230V 50Hz Export	1.72	2.48		
Maximum Over Current Protection 120V	20	20		
Maximum Over Current Protection 230V	15	15		

ONLY LIGHTING CONFIGURATIONS THAT ARE COMPLIANT WITH THE U.S. DEPT. OF ENERGY (DOE) 2017 REGULATION ARE AVAILABLE FOR SALE FOR USE IN THE U.S.A.

LED LIGHTING	Amperes		Watts	
	8 ft	12 ft	8 ft	12 ft
EcoShine ULTRA Canopy Lights				
1 Row EcoShine ULTRA	0.36	0.54	43	64
EcoShine II Canopy Lights				
1 Row EcoShine II	0.32	0.48	39	58
1 Row EcoShine II HO	0.44	0.66	53	79
EcoShine II Shelf Lights				
4 Rows of Shelves	0.66	0.99	79	119
EcoShine II Rail Light — 1 Row				
	0.16	0.25	20	30
Standard Lighting (T-8 Fluorescent) 1 Row Canopy				
Each Row of Canopy, Shelf or Rail Lights	0.51	0.77	59	85

120V Lighting Circuit Total = Standard Lighting + Total Optional Lighting + Optional Shelf Lighting

120V LED Lighting Circuit Total = Canopy Lighting + Shelf Lighting

230V Lighting Circuit Total = Multiply 120V Lighting Circuit Total by 0.52

Please note: some combinations of fluorescent lights on this case model may not be compliant with DOE 2017 and may not be available to order in the US and Canada. More lighting options are available with LED lights. The Hussmann Product Configurator will not allow lighting options that do not comply with the DOE 2017 standards.

Product Data

Recommended Usable Cube¹ (Cu Ft/Ft)

7.48 ft³/ft (0.70 m³/m)

AHRI Total Display Area² (Sq Ft/Ft)

4.27 ft²/ft (1.30 m²/m)

Shelf Area³ (Sq Ft/Ft)

7.87 ft²/ft (2.40 m²/m)

¹ AHRI Refrigerated Volume less shelving and other unusable space: Refrigerated Volume/Unit of Length, ft³/ft [m³/m]

² Computed using AHRI 1200 standard methodology: Total Display Area, ft² [m²]/Unit of Length, ft [m]

³ Shelf surface area is composed of bottom deck plus standard shelf complement, as shown in the Hussmann *Product Reference Guide*. The standard shelf complement for this model is (4) rows of 16-inch shelves.

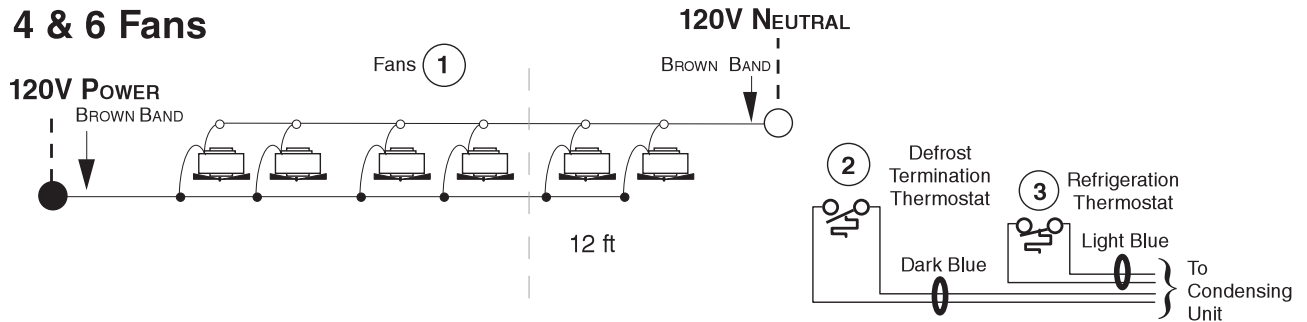
ESTIMATED SHIPPING WEIGHT⁴

Case	8 ft	12 ft	Solid End (each)
lb (kg)	1200 (544)	1400 (635)	100 (45)

⁴ Actual weights will vary according to optional kits included.

**Fan Wiring
Offtime Defrost**

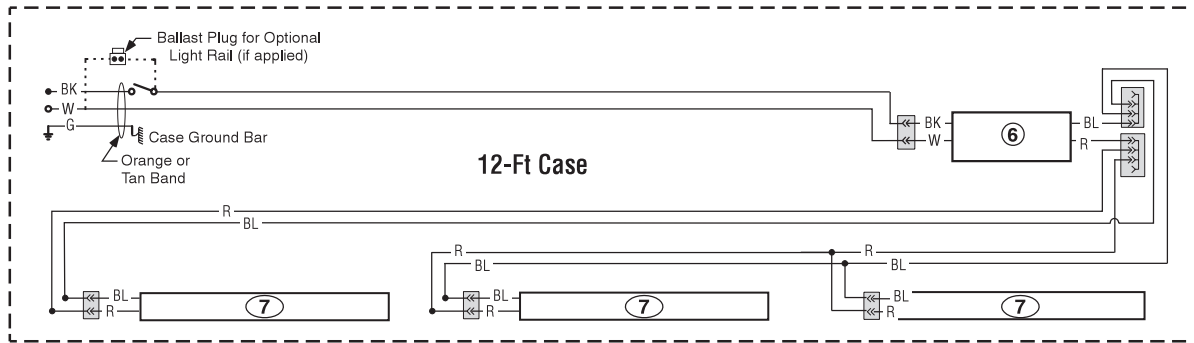
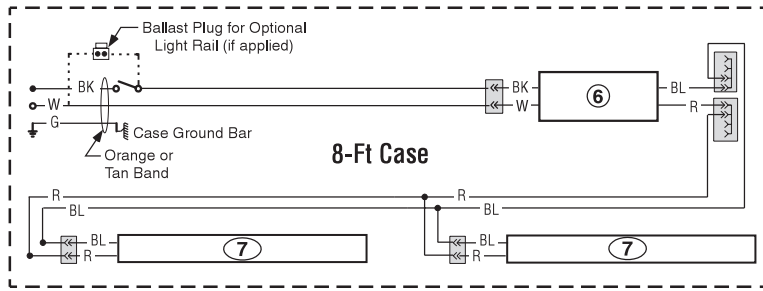
4 & 6 Fans



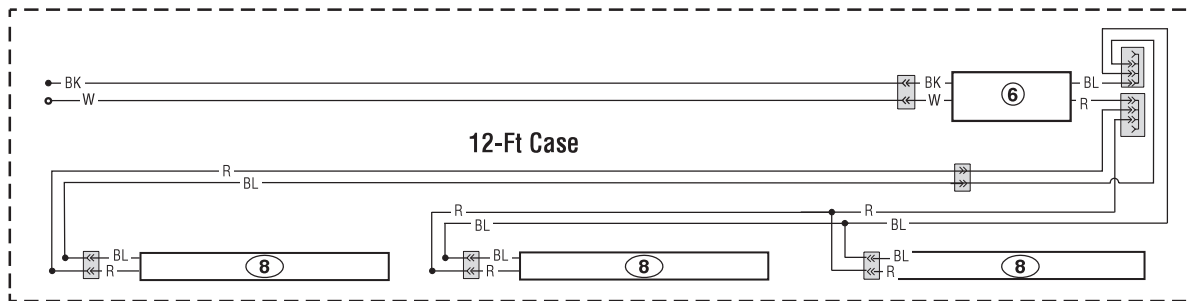
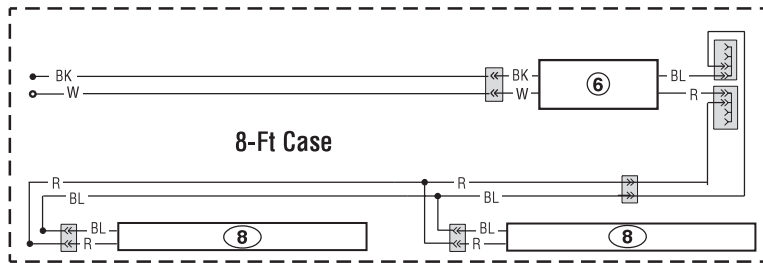
Scan QR code to access
Fluorescent Wiring Diagrams
on your mobile device.

LED Canopy and Rail Light Circuits

LED Canopy Lighting - 1 Row



LED Rail Lighting - 1 Row



WARNING

All components must have mechanical ground, and the merchandiser must be grounded.

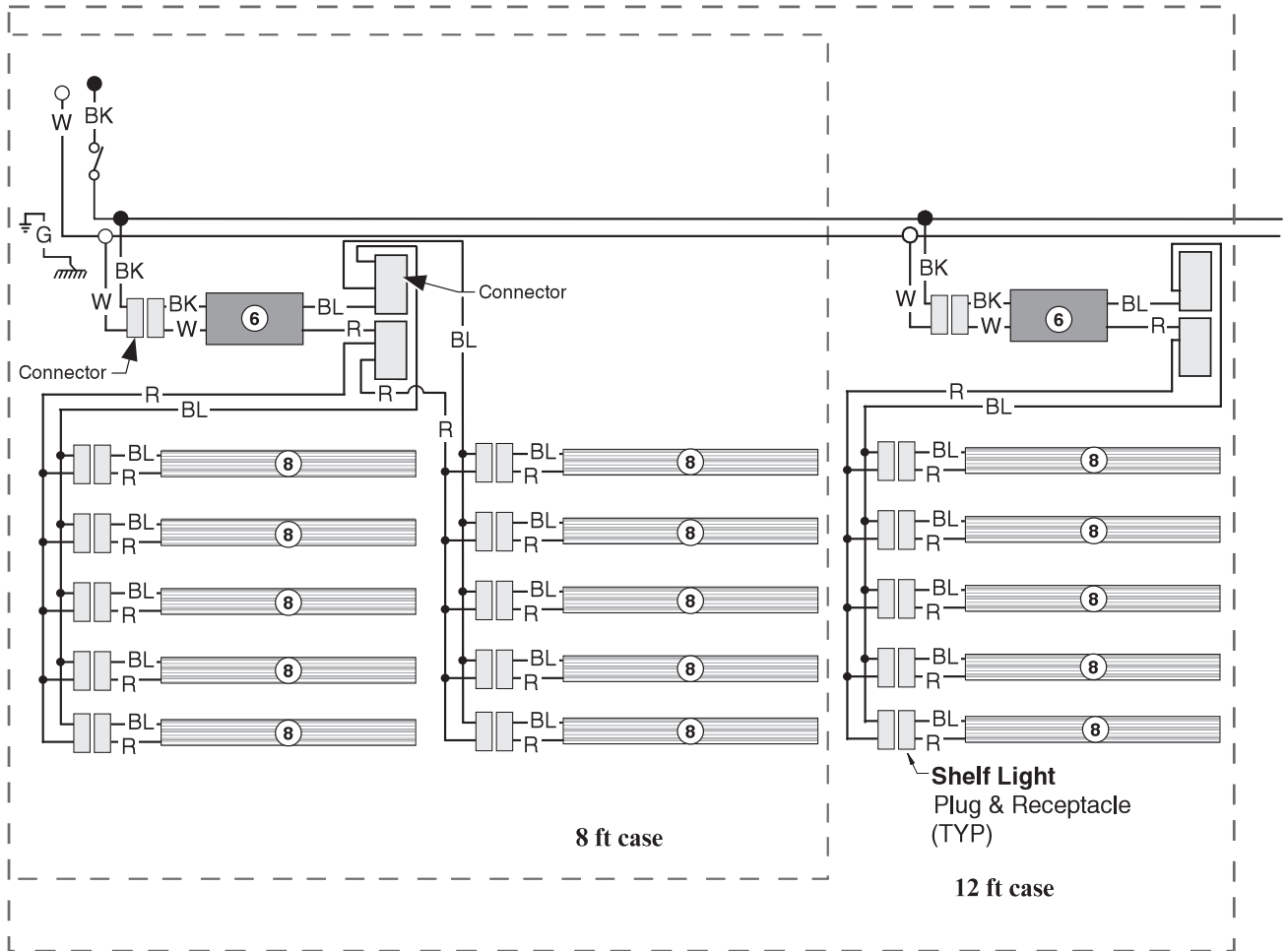
CIRCLED NUMBERS = PARTS LIST ITEM NUMBERS

R = Red Y = Yellow G = Green BL = Blue BK = Black W = White

● = 120V POWER ○ = 120V NEUTRAL ⊥ = FIELD GROUND \overline{m} = CASE GROUND

Optional Shelf Lighting LED Fixtures

Shelf Harness and LED Light Circuits for 4 or 5 Rows of Shelves



WARNING

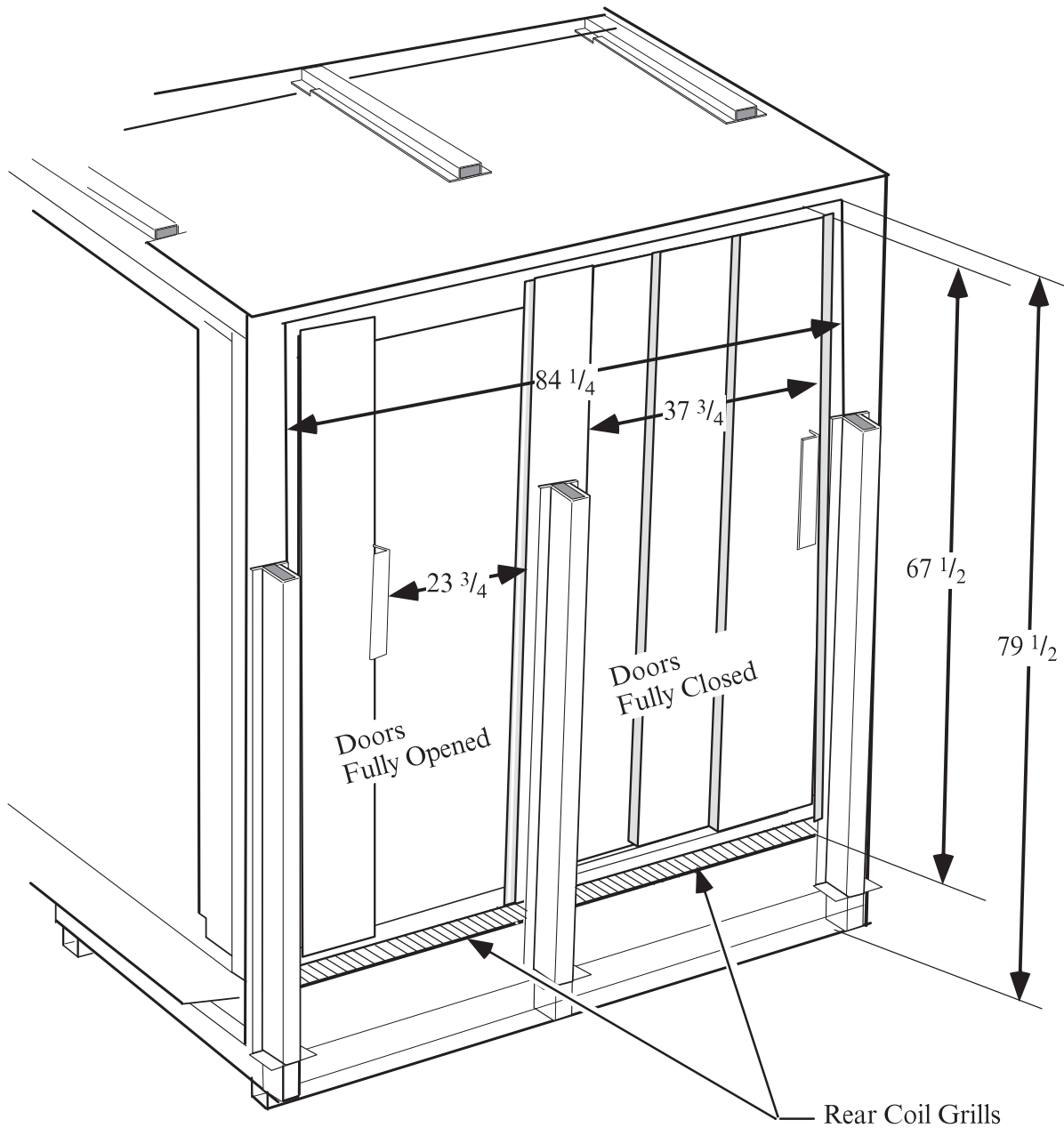
All components must have mechanical ground, and the merchandiser must be grounded.

CIRCLED NUMBERS = PARTS LIST ITEM NUMBERS

R = Red G = Green BL = Blue BK = Black W = White

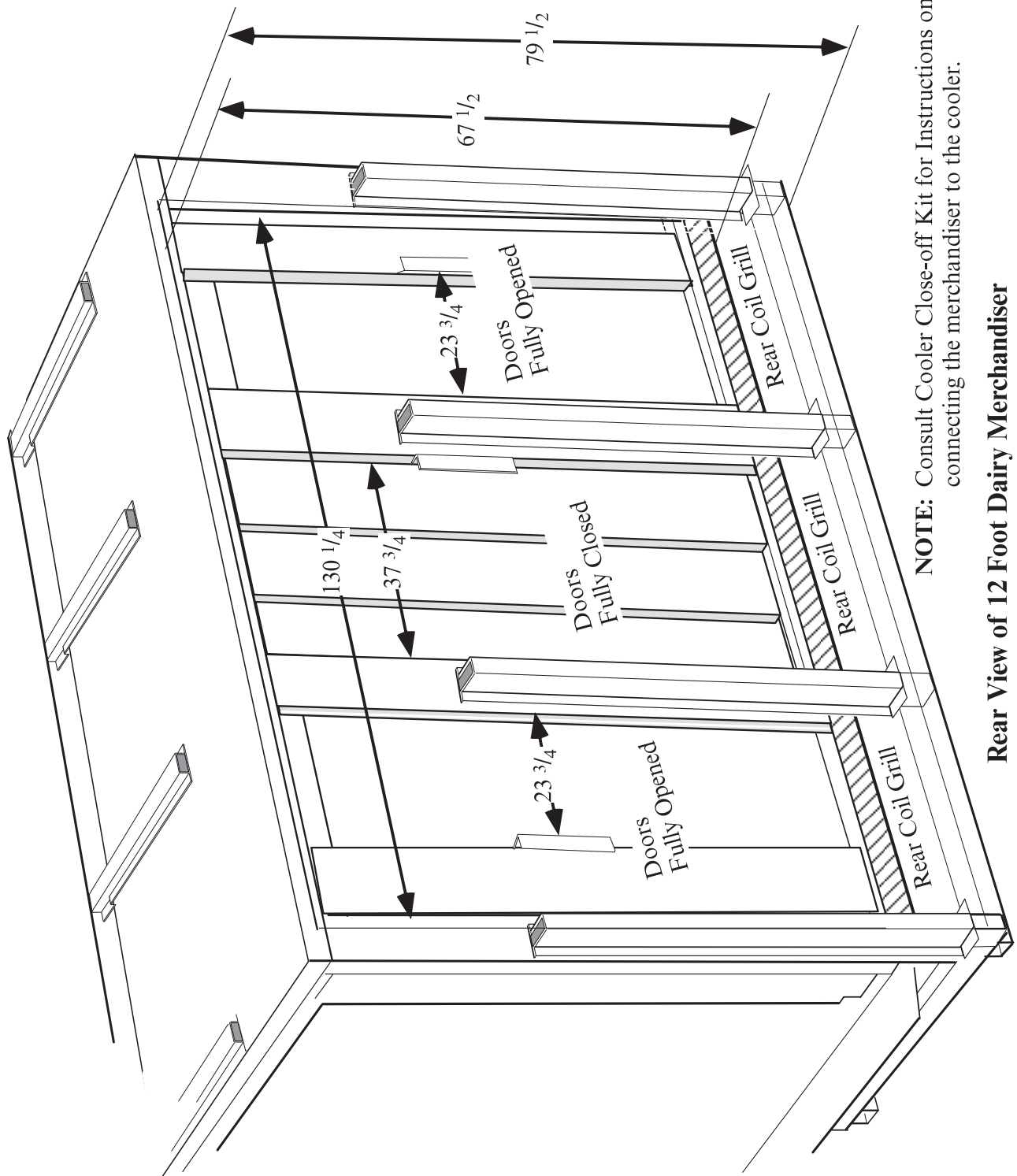
● = 80V POWER ○ = 80V NEUTRAL ⚡ = FIELD GROUND *mm* = CASE GROUND

Excel D5X-RE
Dairy & Delicatessen



Rear View of 8 Foot Dairy Merchandiser
Double-walled telescoping doors slide both left and right.

NOTE: Consult Cooler Close-off
Kit for instructions on
connecting the
merchandiser



NOTE: Consult Cooler Close-off Kit for Instructions on connecting the merchandiser to the cooler.

Rear View of 12 Foot Dairy Merchandiser

Double-walled telescoping doors slide both left and right.