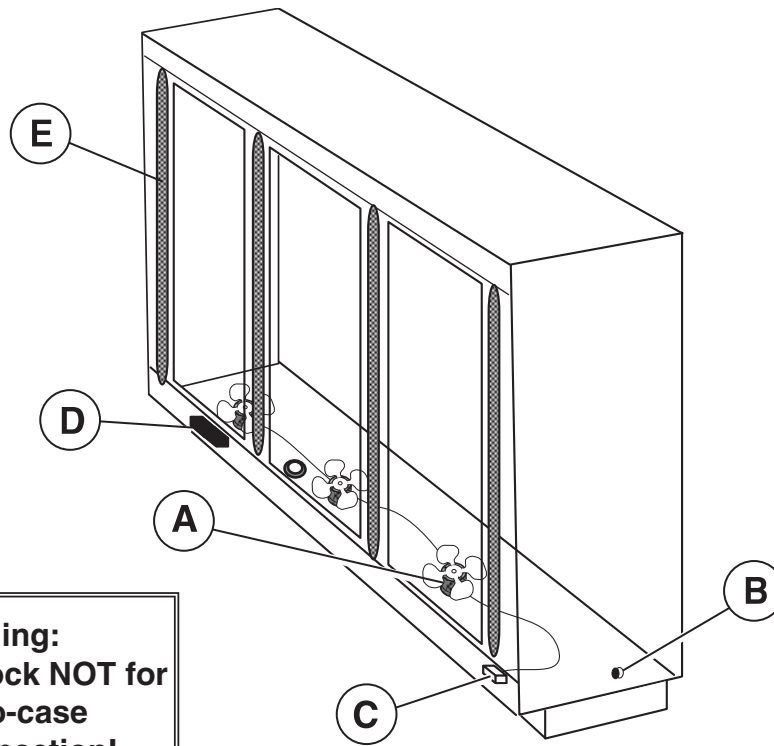




**Warning:
Terminal block NOT for
case-to-case
wire connection!**



We reserve the right to change or revise specifications and product design in connection with any feature of our products. Such changes do not entitle the buyer to corresponding changes, improvements, additions or replacements for equipment previously sold or shipped.

Item	Part #	Description	Wiring Item #	Item	Part #	Description	Wiring Item #
FAN ASSEMBLIES, AND THERMOSTATS				LED FIXTURES AND POWER SUPPLY			
A.	12W Standard Energy Efficient Fan Assembly	(1)		D.	0499399	LED Power Supply(EP.4481668)	
	0477655	Fan Motor, Evaporator (MO.4410546)		E.		LED Fixture	
	0461805	Fan Blade (FB.4780446)				<i>Replace with like fixtures</i>	
B.		Optional Adjustable Refrigeration Thermostat	(2)				
CONTROL (RMF ONLY)							
C.	Fan Control (RMF)		(3)				
	0534013	Optional Fan Speed Control, 120V, 60hz (CT.4440734)					

Refer to INNOVATOR REACH-IN GLASS DOOR INSTALLATION AND SERVICE manual, PIN 0425683, for Innovator, Innovator II, or Innovator III door and frame replacement parts.

Data sheet-Reach-in RM

Note: Revision H: Updated cross section.

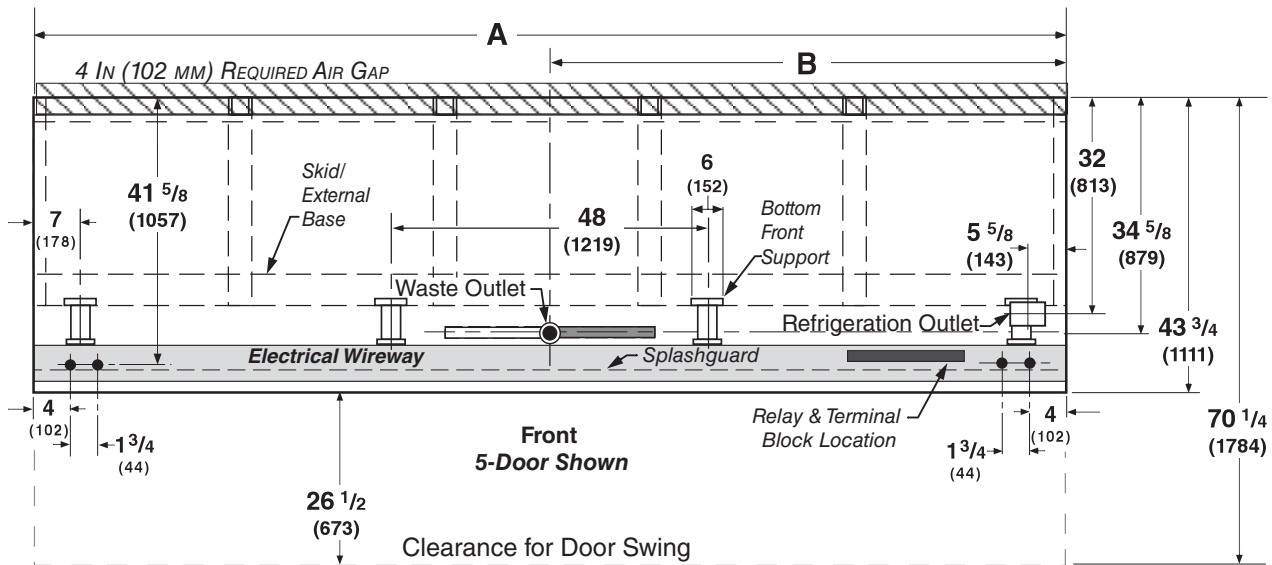
Engineering Plan Views

RL - RM - RMF Plan View

PHYSICAL DATA	
Merchandiser Drip Pipe (in.)	1 1/4
Merchandiser Liquid Line (in.)	3/8
Merchandiser Suction Line (in.)	5/8

Reach-In
2, 3, 4 & 5 Door

Dimensions shown as in. & (mm).



General	2 Dr	3 Dr	4 Dr	5 Dr
(A) Case Length (without ends or partitions)	62 (1575)	92 1/2 (2350)	122 7/8 (3121)	153 3/8 (3896)
**NOTE: Each solid end adds approximately 2 3/8 in (60 mm) to length of line up; each partition add approximately 2 3/4 in (70 mm); case to case joints can add approximately 1/8 in (3 mm) for gasket material.				
Maximum O/S dimension of case back to front <i>(Includes bumper. Add 26 1/2 in. (673 mm) for door swing.)</i>	43 3/4 (1111)	43 3/4 (1111)	43 3/4 (1111)	43 3/4 (1111)
Back of case to rear of splashguard	39 7/8 (1013)	39 7/8 (1013)	39 7/8 (1013)	39 7/8 (1013)
Width of Skidrail	3 3/4 (95)	3 3/4 (95)	3 3/4 (95)	3 3/4 (95)
Width of Bottom Front Support	6 (152)	6 (152)	6 (152)	6 (152)
Stub-up area between front support and splashguard	3 1/8 (79)	3 1/8 (79)	3 1/8 (79)	3 1/8 (79)
Electrical Service				
RH end of case to the center of nearest knockout	4 (102)	4 (102)	4 (102)	4 (102)
RH end of case to the center of LH knockout	58 (1473)	88 1/2 (2248)	118 7/8 (3019)	149 3/8 (3794)
Back O/S of case to center of knockout	41 5/8 (1058)	41 5/8 (1058)	41 5/8 (1058)	41 5/8 (1058)
* NOTE: Electrical Field Wiring Connection Point is at terminal.				
Waste Outlet				
(B) Right end of case to center of waste outlet	23 7/8 (606)	54 1/4 (1378)	46 1/4 (1175)	76 5/8 (1946)
Back O/S of case to center of waste outlet	34 5/8 (879)	34 5/8 (879)	34 5/8 (879)	34 5/8 (879)
Water Seal				
Edge of water seal to center of waste outlet	13 (330)	13 (330)	13 (330)	13 (330)
Schedule 40 PVC drip pipe	1 1/4 (32)	1 1/4 (32)	1 1/4 (32)	1 1/4 (32)
** NOTE: Field installed water seal outlets, tees, and connectors are shipped with case				
Refrigeration Outlet				
RH end of case to center of RH refrigeration outlet	5 3/8 (137)	5 3/8 (137)	5 3/8 (137)	5 3/8 (137)
Back O/S of case to center of refrigeration outlet	32 (813)	32 (813)	32 (813)	32 (813)
Outside bottom front supports from end of case	6 3/4 (170)	6 3/4 (170)	6 3/4 (170)	6 3/4 (170)
Center bottom front support from Centerline	24 (610)	24 (610)	24 (610)	24 (610)
<i>Distance between Center and Outside supports will vary</i>				

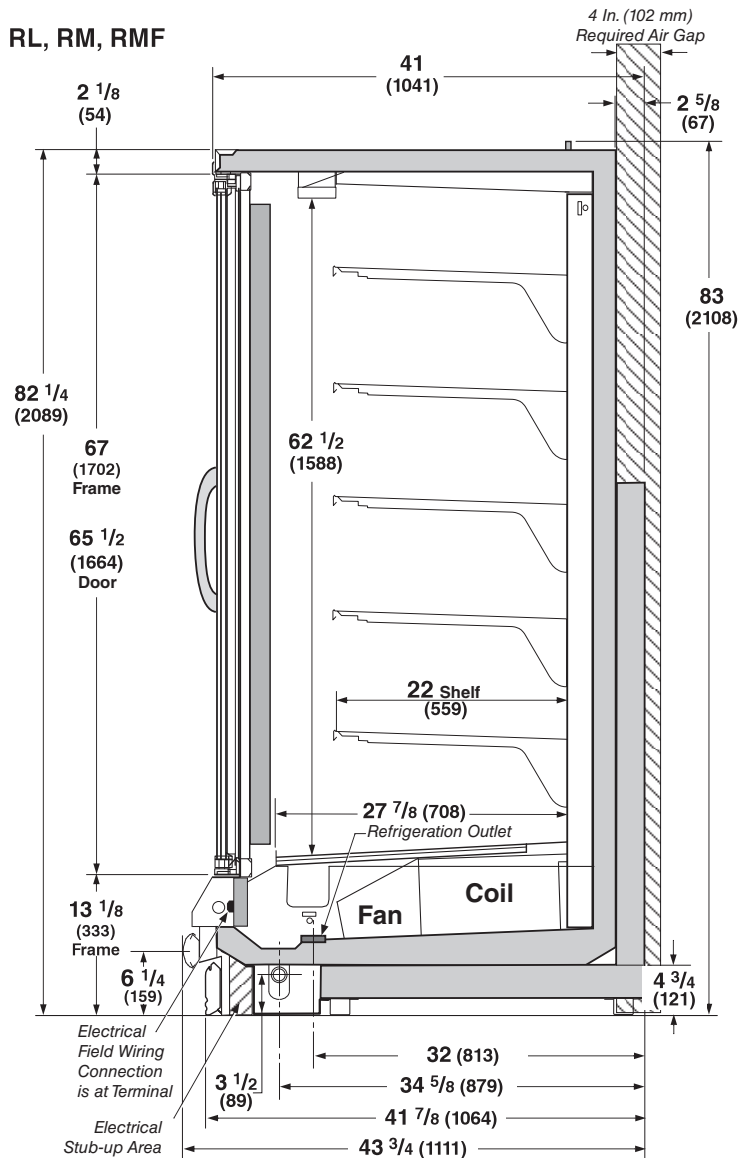
Reach-in 2, 3, 4 and 5 Door Models



All RL and RM models meet or surpass the requirements of the DOE 2017 energy efficiency standards.

Standard Reach-in configuration consists of Innovator doors, energy efficient fan motors, and EcoShine II LED vertical lighting.

Dimensions shown as in. & (mm).



Estimated Charge ***	RM		
2Dr	1.8 lb	29 oz	0.8 kg
3Dr	2.7 lb	43 oz	1.2 kg
4Dr	3.6 lb	57 oz	1.6 kg
5Dr	4.6 lb	73 oz	2.0 kg

***This is an average for all refrigerant types. Actual refrigerant charge may vary by approximately half a pound (8 oz / 0.2 kg).

NSF Certification

This merchandiser model is manufactured to meet NSF/ANSI (National Sanitation Foundation) Standard #7 requirements for construction, materials & cleanability.

RM

With Innovator Doors
Dairy, Deli, Beverages

REFRIGERATION DATA§

Note: This data is based on store temperature and humidity levels that do not exceed NSF guidelines.

	MEDIUM TEMP	AHRI Rating
Discharge Air °F	32	36
Evaporator °F	27	32
Unit Sizing °F	25	30

BTU/HR/DOOR

	NSF TYPE I	NSF TYPE II	AHRI RATING
Temp (°F) /R.H.	75°/55%	80°/55%	

INNOVATOR

Parallel	480	505	470
Conventional	500	525	490

§ Average evaporator temperature shown. Use dew point for high glide refrigerants for unit sizing. Care should be taken to use the dew point in PT tables for measuring and adjusting superheat. Adjust evaporator pressure as needed to maintain discharge air temperature shown.

DEFROST DATA

Frequency (hr)	24
Defrost Water (lb/Dr/day)	0.36
(± 15% based on case configuration and product loading.)	

ELECTRIC	Not Recommended
GAS	Not Recommended
OFFTIME	60 minutes

CONVENTIONAL CONTROLS

Low Pressure Backup Control	
CI/CO (Temp °F)**	+20°/+10°

Indoor Unit Only, Pressure Defrost

Termination (Temp °F)*
Not Recommended
**Use a Temperature Pressure Chart to determine PSIG conversions.

RM

With Innovator Doors
Dairy, Deli, Beverages

Hussmann recommends against frame heater cycling with *Innovator* to prevent door seals from freezing to the frames and tearing.

Electrical Data

Number of Fans—12W	2Dr	3Dr	4Dr	5Dr				
Merchandise	Amperes				Watts			
	2Dr	3Dr	4Dr	5Dr	2Dr	3Dr	4Dr	5Dr
Energy Efficient Evaporator Fan								
120V 50/60Hz Innovator	0.60	0.90	1.20	1.50	36	54	72	90
220V 50/60Hz Export Innovator	0.30	0.45	0.60	0.75	36	54	72	90
Door Anti-sweat Heaters (on fan circuit)	NA							
Frame Anti-sweat Heaters (on fan circuit)								
120V 50/60Hz	0.40	0.60	0.80	1.00	47	71	94	118
220V 50/60Hz Export Innovator	0.20	0.30	0.40	0.50	47	71	94	118
Minimum Circuit Ampacity								
120V 50/60Hz	1.20	1.70	2.20	2.70				
220V 50/60Hz Export	0.70	0.95	1.20	1.45				
Maximum Over Current Protection 120V	20	20	20	20				
Maximum Over Current Protection 220V	15	15	15	15				
Defrost	NA							
Standard Vertical LED Lighting	2Dr	3Dr	4Dr	5Dr	2Dr	3Dr	4Dr	5Dr
Hussmann EcoShine II™ - A (120V)	0.31	0.46	0.62	0.77	37.1	55.6	74.2	92.7
Hussmann EcoShine II™ - A (220V Export)	0.17	0.25	0.34	0.42	37.1	55.6	74.2	92.7
Optional Vertical LED Lighting								
Hussmann EcoShine II™ - B (120V)	0.36	0.52	0.68	0.84	43.2	62.3	81.4	100.5
Hussmann EcoShine II™ - B (220V Export)	0.20	0.28	0.37	0.46	43.2	62.3	81.4	100.5

Product Data

<i>Recommended Usable Cube</i> ¹ (Cu Ft/Dr)	23.46 ft ³ /Dr (0.66 m ³ /Dr)
<i>AHRI Total Display Area</i> ² (Sq Ft/Dr)	13.04 ft ² /Dr (1.21 m ² /Dr)
<i>Shelf Area</i> ³ (Sq Ft/Dr)	29.32 ft ² /Dr (2.72 m ² /Dr)

¹ AHRI Refrigerated Volume less shelving and other unusable space: Refrigerated Volume/Unit of Length, ft³/ft [m³/m]

² Computed using AHRI 1200 standard methodology: Total Display Area, ft² [m²]/Unit of Length, ft [m]

³ Shelf surface area is composed of bottom deck plus standard shelf complement, as shown in the Hussmann *Product Reference Guide*. The standard shelf complement for this model is (5) rows of 22-inch shelves.

ESTIMATED SHIPPING WEIGHT⁴

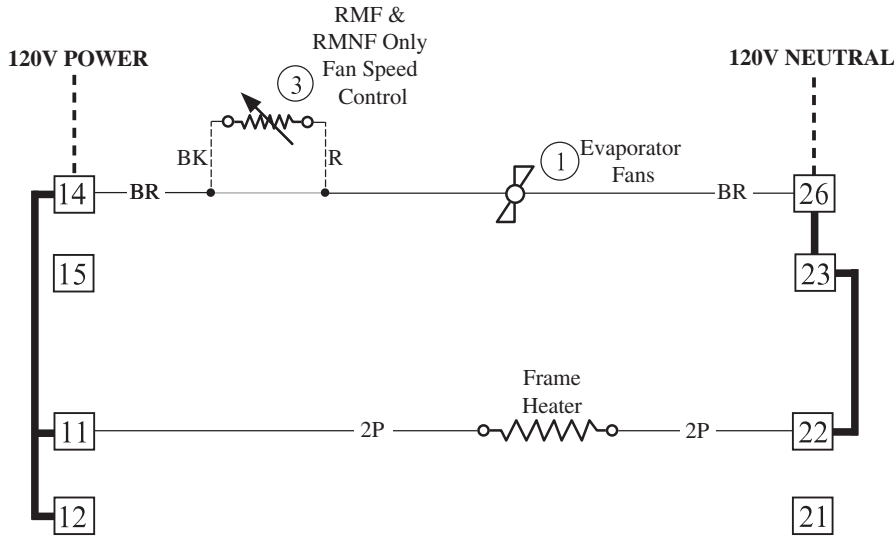
Case	2 Dr	3 Dr	4 Dr	5 Dr	Solid End (each)
lb (kg)	997 (453)	1295 (589)	1595 (725)	1874 (852)	55 (25)

⁴ Actual weights will vary according to optional kits included.

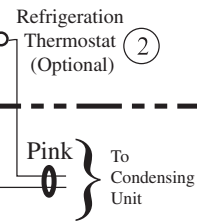
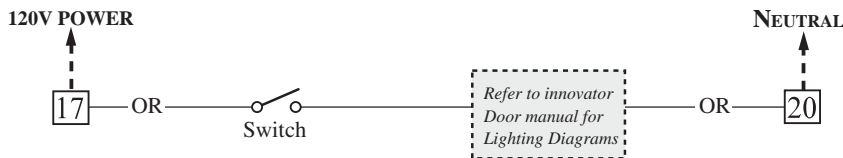
Fan and Heater Circuits - Offtime Defrost (standard)

Medium Temperature

CIRCLED NUMBERS = PARTS LIST ITEM NUMBERS
 R = Red P = Purple 2P = Purple (2 Bands) DB = Dark Blue BK = Black
 LB = Light Blue Pink = Pink BR = Brown Y = Yellow OR = Orange W = White
THESE ARE MARKER COLORS (WIRE MAY VARY.)



Refer to *Innovator Reach-In Glass Door, Installation and Service* manual, P/N 0425683, for *Innovator* door and frame replacement parts.



Terminal Blocks in Raceway

Medium Temperature with Offtime Defrost

