



**DELI SERVICE**  
HUSSMANN - Q3-DC/DS (CHINO)

REVISION DATE 09/29/17



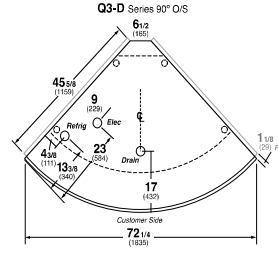
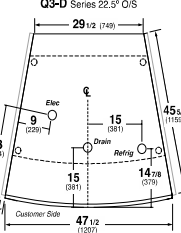
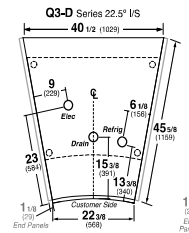
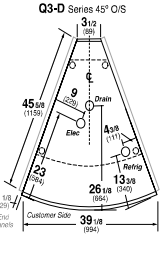
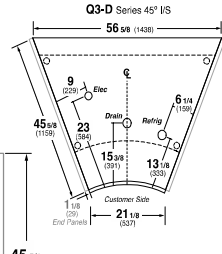
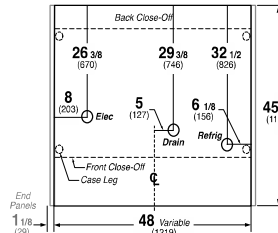
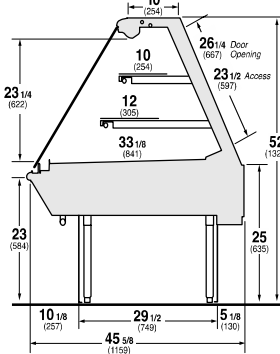
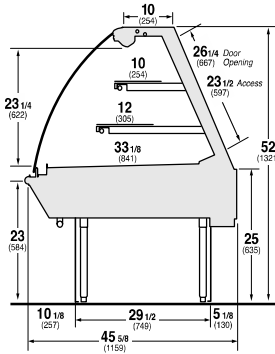
Hussmann refrigerated merchandisers configured for sale for use in the United States meet or surpass the requirements of the DOE 2017 energy efficiency standards.



**Q3-DC**  
Curved Glass Multi-Deck Deli

**Q3-DS**  
Straight Glass Multi-Deck Deli

**Q3-DC/DS** Multi-Deck Deli



**REFRIGERATION DATA:**

CASE LENGTHS/ WEDGES	CASE USAGE	CAPACITY *** (BTU/HR/FT) (TOTAL FOR WEDGES)		TEMPERATURE (°F)			VELOCITY (FT/MIN)
		RATING CONDITION		EVAPORATOR		DISCHARGE AIR ** (°F)	
		NSF 7	AHRI 1200	NSF 7	AHRI 1200	NSF 7	
4', 5', 6', 8', 10', 12'	DELI	380	265	20	24	28~31	200~250
22.5° IS	DELI	1380	830	20	24	28~31	200~250
22.5° OS	DELI	2210	1115	20	24	28~31	200~250
45° IS	DELI	2850	975	20	24	28~31	200~250
45° OS	DELI	2430	1045	20	24	28~31	200~250
90° OS	DELI	3635	1380	20	24	28~31	200~250

CASE LENGTHS	EST. REFRG. CHRG. (R404A) (LBS)	GLYCOL (20°F INLET, 6° RISE)	
		GPM	PSI
4'	0.5	0.6	1.3
5'	0.7	0.7	2.1
6'	0.7	0.8	3.0
8'	1.0	1.1	1.4
10'	1.4	1.3	2.4
12'	1.5	1.6	2.9
22.5° IS	0.3	0.4	0.7
22.5° OS	0.3	0.7	1.3
45° IS	0.3	0.9	1.8
45° OS	0.2	0.8	0.9
90° OS	0.3	1.1	2.4

\*\*FRONT DISCHARGE AIR MEASURED INSIDE AIR CURTAIN HONEYCOMB

\*\*\*REFRIGERATION NOTES:

- 1) BTU'S INCLUDE CANOPY LIGHTS. ADD 10 BTU'S/SHELF/FT FOR EACH SHELF (LIGHT)
- 2) AHRI 1200 RATING POINT FOR ENERGY CONSUMPTION COMPARISON ONLY
- 3) USE DEW POINT FOR HIGH GLIDE REFRIGERANTS. CARE SHOULD BE TAKEN TO USE THE DEW POINT IN P/T TABLES FOR MEASURING AND ADJUSTING SUPERHEAT. ADJUST EVAPORATOR PRESSURE AS NEEDED TO MAINTAIN THE DISCHARGE AIR TEMPERATURE SHOWN.
- 4) RATING CONDITION IS NSF TYPE I, 75°F/55% RH

**REFRIGERATION DATA CONTINUED:**

ELEC. THERMOSTAT / AIR SENSOR SETTINGS		DEFROST TYPE	TIME (MIN)	DEFROST FREQUENCY (#/DAY)	TERM. TEMP (°F) COIL ONLY	DRIP TIME	DEFROST WATER (LBS/DAY/FT)	
USAGE	CUT IN (°F)							CUT OUT (°F)
DELI	30	27	OFF TIME	40	3	45	N/A	2.4

END PANEL WIDTH KEY		
# OF END PNLS	END PNL WIDTH (IN.)	TOTAL ADDED LENGTH (IN.)
1	1.125	1.125
2	1.125	2.25

**ELECTRICAL DATA:**

**STANDARD FANS, HEATERS, LED LIGHTS (115 VOLT)**

CASE LENGTH	EVAPORATOR FANS					AIRSWEEP FANS			CANOPY LIGHTS LED		OPTIONAL LED SHELF LIGHTS		MAX. LED LOAD (W/ ALL OPTIONS)		AIRSWEEP HEATERS		CONVENIENCE OUTLETS (OPTIONAL)		
	# OF FANS	BLADE DIA. (IN.)	BLADE PITCH (°)	AMPS	WATTS	# OF FANS	AMPS	WATTS	AMPS	WATTS	AMPS	WATTS	AMPS	WATTS	AMPS	WATTS	# OUTLETS	VOLTS	AMPS
4'	1	6.7	25	0.12	8	1	0.08	9	0.13	15	0.18	21	0.31	36	1.30	150	1	115	15
5'	1	6.7	25	0.12	8	1	0.08	9	0.18	21	0.23	26	0.40	47	1.65	190	1	115	15
6'	2	6.7	25	0.24	16	2	0.15	18	0.23	26	0.27	31	0.49	57	1.96	225	1	115	15
8'	2	6.7	25	0.24	16	2	0.15	18	0.27	31	0.36	41	0.63	72	2.61	300	1	115	15
10'	2	6.7	25	0.24	16	2	0.15	18	0.36	41	0.45	52	0.81	93	3.26	375	1	115	15
12'	4	6.7	25	0.48	32	3	0.23	26	0.40	46	0.54	62	0.94	108	3.91	450	2	115	30
22.5° IS	1	6.7	15	0.12	8	1	0.08	9	0.09	10	0.09	10	0.17	20	0.65	75	N/A	N/A	N/A
22.5° OS	1	6.7	25	0.12	8	1	0.08	9	0.09	10	0.13	15	0.22	25	1.04	120	N/A	N/A	N/A
45° IS	1	6.7	15	0.12	8	1	0.08	9	0.04	4	0.13	15	0.17	20	0.65	75	N/A	N/A	N/A
45° OS	1	6.7	10	0.12	8	1	0.08	9	0.04	4	0.09	10	0.12	14	1.09	125	N/A	N/A	N/A
90° OS	2	6.7	20	0.24	16	2	0.15	18	0.04	4	0.08	9	0.12	13	1.96	225	N/A	N/A	N/A

**OPTIONAL HIGH OUTPUT LED LIGHTS (115 VOLT)**

CASE LENGTH	CANOPY LIGHTS H.O. LED		OPTIONAL SHELF		MAX. H.O. LED LOAD	
	AMPS	WATTS	AMPS	WATTS	AMPS	WATTS
4'	0.23	26	0.26	30	0.49	56
5'	N/A	N/A	N/A	N/A	N/A	N/A
6'	N/A	N/A	N/A	N/A	N/A	N/A
8'	0.45	52	0.53	61	0.98	113
10'	N/A	N/A	N/A	N/A	N/A	N/A
12'	0.68	78	0.79	91	1.47	169
22.5° IS	N/A	N/A	N/A	N/A	N/A	N/A
22.5° OS	N/A	N/A	N/A	N/A	N/A	N/A
45° IS	N/A	N/A	N/A	N/A	N/A	N/A
45° OS	N/A	N/A	N/A	N/A	N/A	N/A
90° OS	N/A	N/A	N/A	N/A	N/A	N/A