



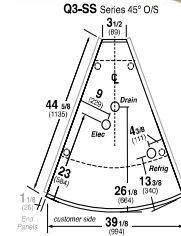
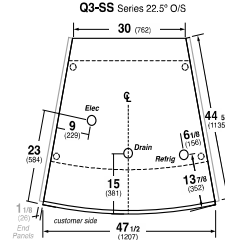
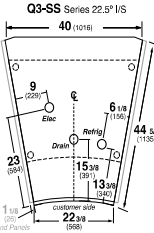
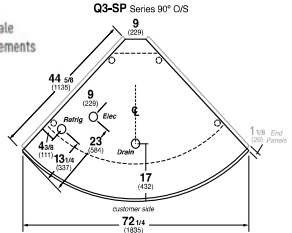
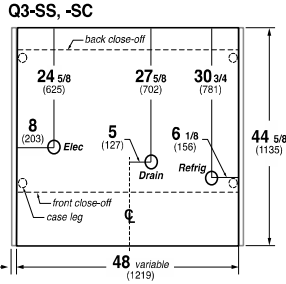
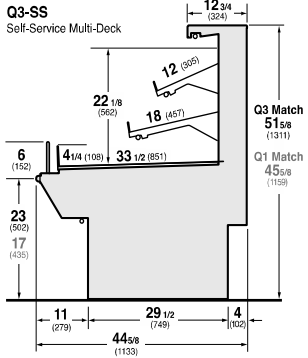
SELF-SERVICE DELI

HUSSMANN - Q3-SS (CHINO)

REVISION DATE 01/31/17



Hussmann refrigerated merchandisers configured for sale for use in the United States meet or surpass the requirements of the DOE 2017 energy efficiency standards.



REFRIGERATION DATA:

Table with columns: CASE LENGTHS/WEDGES, CASE USAGE, CAPACITY (BTU/HR/FT), TEMPERATURE (°F), VELOCITY (FT/MIN). Rows include SS DELI, MEAT, SS DELI, SS DELI, SS DELI, SS DELI, SS DELI, SS DELI, SS DELI, REAR STORAGE.

Table with columns: CASE LENGTHS, EST. REFG. CHR.G. 404A (LBS), GLYCOL (20°F INLET, 6° RISE) FRONT (GPM, PSI), GLYCOL (20°F INLET, 6° RISE) REAR STORAGE (GPM, PSI). Rows include 4', 5', 6', 8', 10', 12', 22.5° IS, 22.5° OS, 45° IS, 45° OS, 90° OS.

\*\*FRONT DISCHARGE AIR MEASURED INSIDE AIR CURTAIN HONEYCOMB

\*\*\*REFRIGERATION NOTES:

- 1) BTU'S INCLUDE CANOPY LIGHTS. ADD 10 BTUS/SHELF/FT FOR EACH SHELF (LIGHT)
2) AHRI 1200 RATING POINT FOR ENERGY CONSUMPTION COMPARISON ONLY
3) USE DEW POINT FOR HIGH GLIDE REFRIGERANTS. CARE SHOULD BE TAKEN TO USE THE DEW POINT IN P/T TABLES FOR MEASURING AND ADJUSTING SUPERHEAT. ADJUST EVAPORATOR PRESSURE AS NEEDED TO MAINTAIN THE DISCHARGE AIR TEMPERATURE SHOWN.
4) RATING CONDITION IS NSF TYPE I, 75°F/55% RH.

REFRIGERATION DATA CONTINUED:

Table with columns: LOCATION, ELEC. THERMOSTAT / AIR SENSOR SETTINGS (USAGE, CUT IN, CUT OUT), DEFROST TYPE, TIME (MIN), DEFROST FREQUENCY (#/DAY), TERM. TEMP (°F) COIL ONLY, DRIP TIME, DEFROST WATER (LBS/DAY/FT).

END PANEL WIDTH KEY

Table with columns: # OF END PNLS, END PNL WIDTH (IN.), TOTAL ADDED LENGTH (IN.). Rows include 1, 2.

ELECTRICAL DATA: STANDARD FANS, HEATERS, LED LIGHTS (115 VOLT)

Large table with columns: CASE LENGTH, EVAPORATOR FANS (# OF EVAP FANS, BLADE DIA., BLADE PITCH, AMPS, WATTS), REFRIGERATED REAR STORAGE (EVAP FANS), CANOPY LIGHTS LED, OPTIONAL LED SHELF LIGHTS, MAX. LED LOAD (W/ ALL OPTIONS), ANTI-SWEAT HEATERS (ON FAN CIRCUIT), CONVENIENCE OUTLETS (OPTIONAL).

OPTIONAL HIGH OUTPUT LED LIGHTS (115 VOLT)

Table with columns: CASE LENGTH, CANOPY LIGHTS H.O. LED (AMPS, WATTS), OPTIONAL SHELF (AMPS, WATTS), MAX. H.O. LED LOAD (AMPS, WATTS).