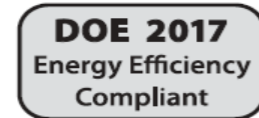


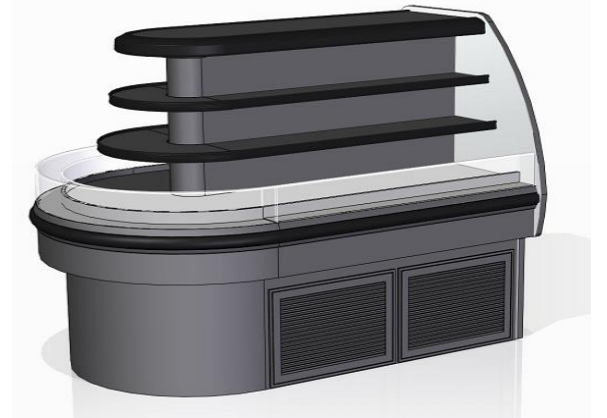
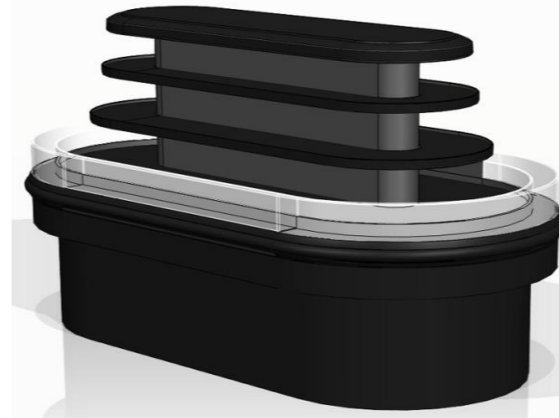


**SELF-SERVICE DELI**  
**HUSSMANN - TY3-4 I-ISLAND, E-END SELF-CONTAINED (CHINO)**

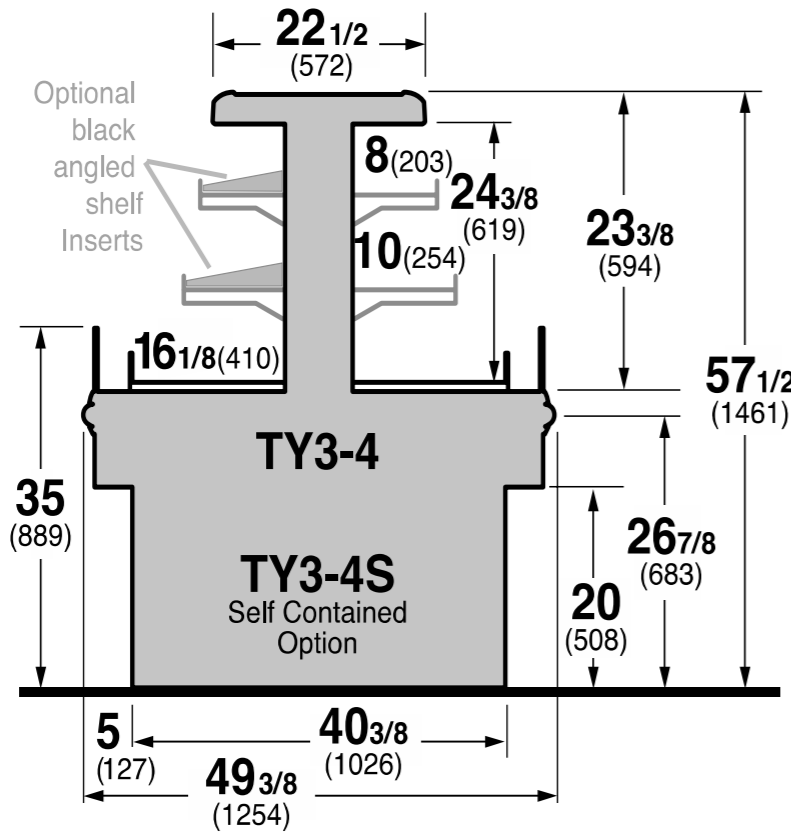
REVISION DATE 09/20/21



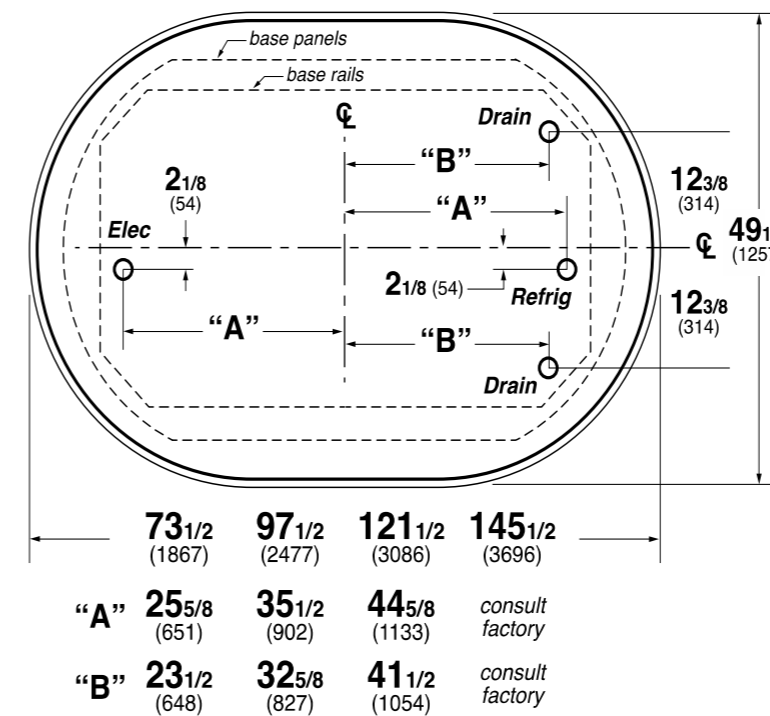
Hussmann refrigerated merchandisers configured for sale for use in the United States meet or surpass the requirements of the DOE 2017 energy efficiency standards.



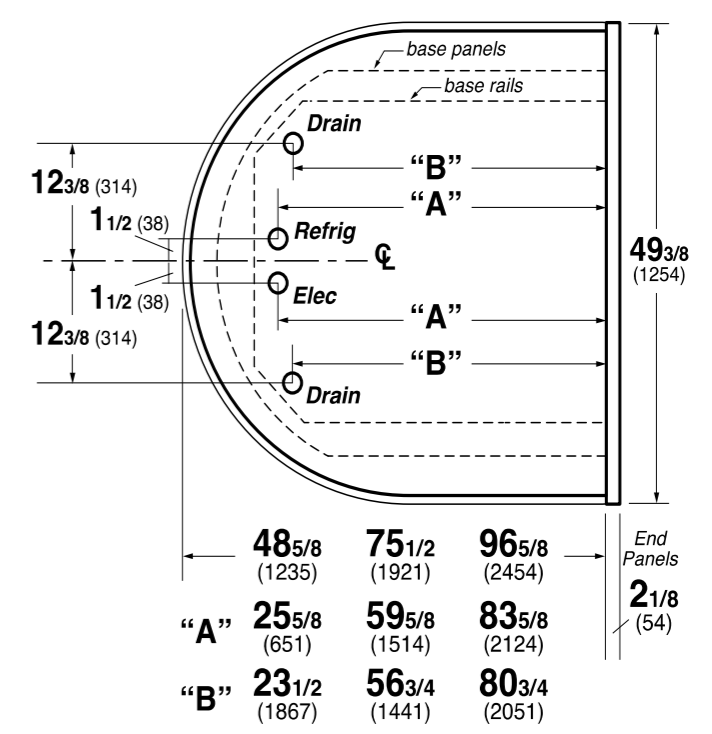
**TY3-4 4' wide Merchandiser**



**TY-4 4' wide Island Merchandiser**



**TY-4 4' wide Flat End Merchandiser**



**REFRIGERATION DATA:**

CASE LENGTHS	CASE USAGE	CONVENTIONAL CAPACITY ** (BTU/HR/FT)	AVERAGE DISCHARGE AIR* (°F) (SEE SETPOINTS BELOW)	VELOCITY (FT/MIN)
6I, 8I, 10I, 4E, 6E, 8E	SS DELI	1500	32~36	125~175

\*FRONT DISCHARGE AIR MEASURED INSIDE AIR CURTAIN HONEYCOMB

\*\*REFRIGERATION NOTES:

- 1) CAPACITY FOR REFERENCE ONLY.
- 2) USE DEW POINT FOR HIGH GLIDE REFRIGERANTS. CARE SHOULD BE TAKEN TO USE THE DEW POINT IN P/T TABLES FOR MEASURING AND ADJUSTING SUPERHEAT. ADJUST EVAPORATOR PRESSURE AS NEEDED TO MAINTAIN THE DISCHARGE AIR TEMPERATURE SHOWN.
- 3) RATING CONDITION IS NSF TYPE I, 75°F/55% RH

**REFRIGERATION DATA CONTINUED:**

CONTROLLER / AIR SENSOR SETTINGS			DEFROST TYPE	FAILSAFE TIME (MIN)	DEFROST FREQUENCY (#/DAY)	TERM. TEMP (°F) AIR	DRIP TIME (MIN)	DEFROST WATER (LBS/DAY/FT)
USAGE	SET POINT (°F)	DIFFERENTIAL (°F)						
DELI	26	10	OFF TIME	50	6	52	NA	NA

4) DEFROST IS BASED ON TERMINATION TEMP, WHICH UNDER NORMAL CIRCUMSTANCES, IS SHORTER THAN FAILSAFE TIME.

END PANEL WIDTH KEY		
# OF END PNLS	END PNL WIDTH (IN.)	TOTAL ADDED LENGTH (IN.)
1	1.125	1.125

**ELECTRICAL DATA:**

**STANDARD FANS, HEATERS, LED LIGHTS (115 VOLT)**

CASE LENGTH	EVAPORATOR FANS					CANOPY LIGHTS LED		OPTIONAL LED SHELF LIGHTS		MAX. LED LOAD (W/ ALL OPTIONS)		ANTI-SWEAT HEATERS		CONVENIENCE OUTLETS (OPTIONAL)			LIGHT MATRIX
	# OF EVAP FANS	BLADE DIA. (IN.)	BLADE PITCH (°)	AMPS	WATTS	AMPS	WATTS	AMPS	WATTS	AMPS	WATTS	AMPS	WATTS	# OUTLETS	VOLTS	AMPS	
6I	6	8	15	1.8	48	0.12	14	0.25	29	0.37	43	0.61	70	1	115	15	18'
8I	6	8	15	1.8	48	0.22	25	0.44	50	0.65	75	0.78	90	1	115	15	30'
10I	8	8	15	2.4	64	0.30	35	0.61	70	0.91	105	0.78	90	1	115	15	42'
4E	4	8	15	1.2	32	0.10	12	0.21	24	0.31	36	0.26	30	1	115	15	15'
6E	6	8	15	1.8	48	0.20	23	0.40	46	0.60	68	0.61	70	1	115	15	27'
8E	8	8	15	2.4	64	0.28	33	0.57	65	0.85	98	0.78	90	1	115	15	39'

**CONDENSING UNIT AND EVAPORATIVE PANS**

CASE LENGTH	CONDENSING UNIT					EVAPORATIVE PAN			EST. REFG. CHRG. (LBS)
	NOM. HP	REFRIG.	Hz/Ph	Volts	RLA	VOLTS	AMPS	WATTS	
6I	2	R-404A	60 / 1	240	12.0	208	7.2	1500	1.1
8I	2 1/4		60 / 1	240	15.7	208	7.2	1500	1.1
10I	3		60 / 1	240	18.0	208	9.1	2000	1.3
4E	1		60 / 1	240	9.3	208	7.2	1500	0.8
6E	2		60 / 1	240	15.7	208	7.2	1500	1.1
8E	2 1/4		60 / 1	240	18.0	208	7.2	1500	1.3
6I	2 1/4	R-448A	60 / 1	240	15.7	208	7.2	1500	1.1
8I	3		60 / 1	240	18.0	208	7.2	1500	1.1
10I	3 1/4		60 / 1	240	23.2	208	9.1	2000	1.3
4E	1 1/4		60 / 1	240	10.0	208	7.2	1500	0.8
6E	2		60 / 1	240	12.0	208	7.2	1500	1.1
8E	3		60 / 1	240	18.0	208	7.2	1500	1.3

PLIG TYPE	
6I	L14-30P
8I	CS-6365-C
10I	CS-6365-C
4E	L14-30P
6E	L14-30P
8E	CS-6365-C

**OPTIONAL HIGH OUTPUT LED LIGHTS (115 VOLT)**

CASE LENGTH	CANOPY LIGHTS H.O. LED		OPTIONAL SHELF		MAX. H.O. LED LOAD	
	AMPS	WATTS	AMPS	WATTS	AMPS	WATTS
6I	N/A	N/A	N/A	N/A	N/A	N/A
8I	N/A	N/A	N/A	N/A	N/A	N/A
10I	N/A	N/A	N/A	N/A	N/A	N/A
4E	N/A	N/A	N/A	N/A	N/A	N/A
6E	N/A	N/A	N/A	N/A	N/A	N/A
8E	N/A	N/A	N/A	N/A	N/A	N/A