



SELF-SERVICE DELI CHEESE

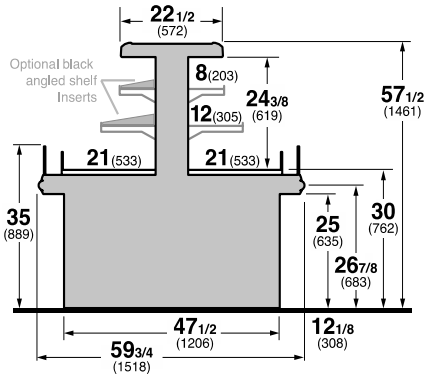
HUSSMANN - TY3-5 I-ISLAND (CHINO)

REVISION DATE 03/21/17

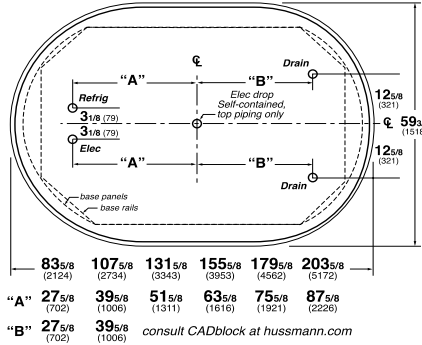


Hussmann refrigerated merchandisers configured for sale for use in the United States meet or surpass the requirements of the DOE 2017 energy efficiency standards.

TY3-5 Entyce 3 level 5' wide island



TY3-5, TY4-5 5' wide Island Merchandiser



REFRIGERATION DATA:

CASE LENGTHS	CASE USAGE	CAPACITY *** (BTU/HR)		TEMPERATURE (°F)			VELOCITY (FT/MIN)
		RATING CONDITION		EVAPORATOR		DISCHARGE AIR ** (°F)	
		NSF 7	AHRI 1200	NSF 7	AHRI 1200	NSF 7	NSF 7
71	DELI / CHEESE	10770	10770	26	26	30-33	175-250
91	DELI / CHEESE	13790	13790	26	26	30-33	175-250
111	DELI / CHEESE	16810	16810	26	26	30-33	175-250
131	DELI / CHEESE	19830	19830	26	26	30-33	175-250
151	DELI / CHEESE	22850	22850	26	26	30-33	175-250
171	DELI / CHEESE	25870	25870	26	26	30-33	175-250

CASE LENGTHS	EST. REFG. CHR.G. (LBS)	20°F GLYCOL 6° RISE	
		GPM	PSI
71	1.1	3.8	5.2
91	1.3	4.8	3.8
111	1.8	5.8	5.1
131	2.2	6.7	6.7
151	2.7	7.6	4.7
171	3.1	8.5	5.4

**FRONT DISCHARGE AIR MEASURED INSIDE AIR CURTAIN HONEYCOMB

***REFRIGERATION NOTES:

- 1) BTUS ARE SHOWN WITHOUT LIGHTS
- 2) ADD 10 BTU/FT OF LED LIGHTS PER LIGHT MATRIX BELOW
- 3) AHRI 1200 RATING POINT FOR ENERGY CONSUMPTION COMPARISON ONLY
- 4) USE DEW POINT FOR HIGH GLIDE REFRIGERANTS. CARE SHOULD BE TAKEN TO USE THE DEW POINT IN P/T TABLES FOR MEASURING AND ADJUSTING SUPERHEAT. ADJUST EVAPORATOR PRESSURE AS NEEDED TO MAINTAIN THE DISCHARGE AIR TEMPERATURE SHOWN.
- 5) RATING CONDITION IS NSF TYPE I, 75°F/55% RH

REFRIGERATION DATA CONTINUED:

ELEC. THERMOSTAT / AIR SENSOR SETTINGS			DEFROST TYPE	TIME (MIN)	DEFROST FREQUENCY (#/DAY)	TERM. TEMP (°F) COIL ONLY	DRIP TIME	DEFROST WATER (LBS/DAY/FT)
USAGE	CUT IN (°F)	CUT OUT (°F)						
DELI / CHEESE	33	30	OFF TIME	16	12	48	N/A	11

END PANEL WIDTH KEY		
# OF END PNLS	END PNL WIDTH (IN.)	TOTAL ADDED LENGTH (IN.)
1	1.125	1.125
2	1.125	2.25

ELECTRICAL DATA:

STANDARD FANS, HEATERS, LED LIGHTS (115 VOLT)

CASE LENGTH	EVAPORATOR FANS				CANOPY LIGHTS LED		OPTIONAL LED SHELF LIGHTS		MAX. LED LOAD (W/ ALL OPTIONS)		ANTI-SWEAT HEATERS (ON FAN CIRCUIT)		CONVENIENCE OUTLETS (OPTIONAL)			LIGHT MATRIX FEET	
	# OF EVAP FANS	BLADE DIA. (IN.)	BLADE PITCH (°)	AMPS	WATTS	AMPS	WATTS	AMPS	WATTS	AMPS	WATTS	AMPS	WATTS	# OUTLETS	VOLTS		AMPS
71	6	8	15	1.8	48	0.12	14.27	0.29	32.99	0.41	47	0.43	50	1	115	15	22
91	8	8	15	2.4	64	0.22	25.04	0.47	54.52	0.69	80	0.61	70	1	115	15	34
111	10	8	15	3.0	80	0.30	34.87	0.65	74.18	0.95	109	0.78	90	1	115	15	46
131	12	8	10	3.6	96	0.40	45.63	0.83	95.71	1.23	141	0.96	110	1	115	15	58
151	14	8	10	4.2	112	0.49	56.39	1.02	117.23	1.51	174	1.04	120	1	115	15	70
171	16	8	10	4.8	128	0.57	65.29	1.17	135.02	1.74	200	1.22	140	1	115	15	82

OPTIONAL HIGH OUTPUT LED LIGHTS (115 VOLT)

CASE LENGTH	CANOPY LIGHTS H.O. LED		OPTIONAL SHELF		MAX. H.O. LED LOAD	
	AMPS	WATTS	AMPS	WATTS	AMPS	WATTS
71	N/A	N/A	N/A	N/A	N/A	N/A
91	N/A	N/A	N/A	N/A	N/A	N/A
111	N/A	N/A	N/A	N/A	N/A	N/A
131	N/A	N/A	N/A	N/A	N/A	N/A
151	N/A	N/A	N/A	N/A	N/A	N/A
171	N/A	N/A	N/A	N/A	N/A	N/A