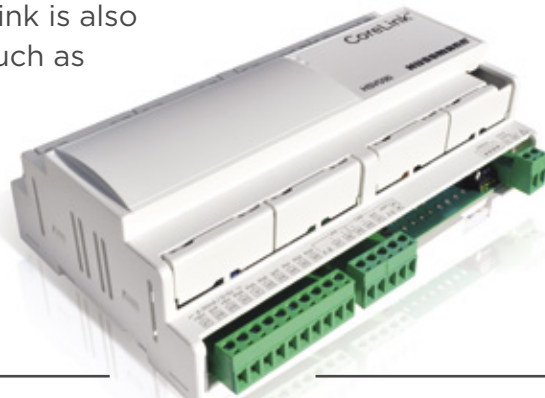




CoreLink™

Electronic Case Controller for use in refrigerated display cases with modular coils.

One case controller and one multi-circuit valve driver module can manage up to 3 electronic expansion valves in a single display case while controlling many other case functions. CoreLink is also designed to expand to meet future needs - such as Micro- and Macro-Distributed Systems.





HUSSMANN

CoreLink Case Controller

For Display Cases with Multiple Coils.

Hussmann medium temperature, multi-deck display cases generally include two or three modular coils. This coil arrangement provides energy efficiency, temperature consistency and temperature stability advantages compared to cases with full length coils.

Hussmann's CoreLink Case Controller allows a single electronic controller and a single valve driver module to manage up to three electronic expansion valves (EEVs) in a single case. The control algorithms and Hussmann case-specific parameters provide tighter temperature control and improved energy efficiency, further improving the performance advantages of Hussmann display cases.

The CoreLink Controller was designed with the flexibility to regulate medium temperature cases with modular coils. It uses an open Modbus RTU communication protocol for integration with a wide variety of other control systems.



CoreLink is the Hussmann case control solution for seamless integration with modular coil cases.

Advantages of Electronic Case Controls.

Electronic Case Controls provide important benefits to food retailers:

- **Simplified Commissioning and Maintenance:** With true "set and forget" superheat control, electronic case controls simplify and standardize the commissioning process.
- **Reduced Wiring:** With electronic case controls, the wiring that must be run from cases to the machine room is significantly reduced.
- **Energy Efficiency:** Energy can be reduced by as much as 10% vs. cases with mechanical expansion valves.
- **Temperature Stability:** Electronic case controls significantly reduce temperature swings and thereby help maintain food freshness and reduce the cost of lost food.
- **Sustainability:** Electronic case controllers, which are required with transcritical CO₂ systems, help enable more sustainable refrigeration while providing safety features related to high pressure refrigerants.

Hussmann's CoreLink Case Controller can effectively provide all the benefits listed above in Hussmann display cases.

Husmann CoreLink Controller.

Husmann's CoreLink Case Controller works with either an HSVD30 three-circuit valve driver module or an HSVD20 one or two-circuit valve driver module.

In addition to managing up to 3 electronic expansion valves, the CoreLink Controller can also manage many other case control functions, including:

- Refrigeration
- Defrosts
- Lights
- Superheat
- Fans
- Anti-Sweat Heaters

It is factory-programmed and installed for optimal performance in Husmann cases, which makes it quick and easy to set-up for full in-store operation.

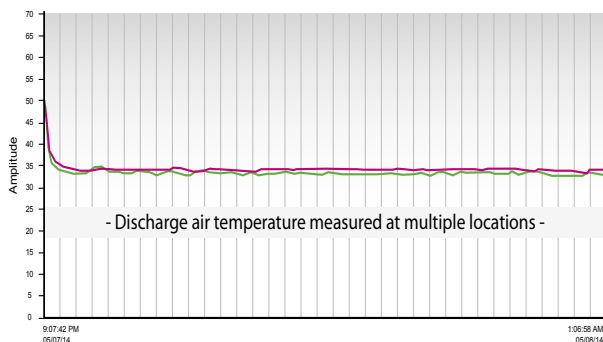
The expandability and modularity of the CoreLink Controller provides the flexibility to add additional functionality and/or devices in the future. In addition, the extensive I/O allows for complete control of the case.

CoreLink I/O:

- (x11) Digital Inputs
- (x8) Relay Outputs [Digital Out]
- (x6) Analog Input
- (x4) Analog Output

Additional Power (Accessories)

- 12 VDC, 200ma MAX
- 5 VDC, 100ma MAX



CoreLink maintains very stable discharge air temperatures with its auto-adaptive temp control, generally holding run-time fluctuations within +/- .5° F.

CoreLink: Easy to Use and Service.

CoreLink provides a user friendly dashboard that allows simple control for both the non-technical user and the service professional. It has a built-in web interface so it can be driven via laptop, phone or tablet, adjusting graphics to the device's screen. The dashboard can be accessed via computer with USB to Ethernet connection, or optionally via Wi-Fi with computer or hand-held devices. A remote, wired display/interface panel is optionally available.

CoreLink can manage multiple user-level access. The non-technical user can easily enter and change the temperature set point and the on/off temperature range. The advanced user can view and adjust more detailed parameters for other functions, including lights, fans, and defrost cycles. Access levels can be assigned by user login, thus insuring the right people have access to the right information. Technicians can also remotely force various operations to verify proper performance.

CoreLink has a save/recall configuration feature and a factory reset feature to restore previous settings if needed. USB support allows case specific configurations to be applied across many cases easily. If the rack controller communications fail, CoreLink will continue to operate in stand-alone mode with pre-loaded settings.

Feedback is provided for all alarm conditions. On-device data logging information is available in an easy to review format to simplify service and maintenance.



HUSSMANN®



CoreLink Valve Driver Modules.

Used in conjunction with the Hussmann CoreLink Case Controller, the new Hussmann HSVD20 and HSVD30 valve driver modules are the solution to drive multiple stepper electronic expansion valves.

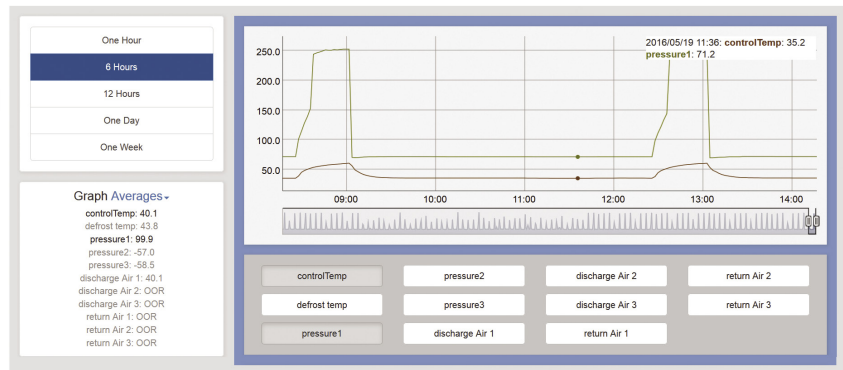
CoreLink valve driver modules include:

- Support for most stepper electronic expansion valves.
- Temperature analog inputs (NTC, PTC, Pt1000).
- Pressure analog inputs (0-5V, 4-20mA).
- The ability to use only one pressure transducer to operate up to 3 coils.

Support For MDS Applications.

Micro and Macro Distributed System applications require a number of advanced features to insure the best possible operation and to get the most out of your MDS system:

- Additional multiple compressor safety monitoring
- Updated defrost scheduling and line-up defrost control
- No requirement for separate propane sensor reduces nuisance alarms
- Open protocols and support for both RTU/MS-TP as well as IP based networks for ultimate flexibility



HUSSMANN®

Hussmann Corporation
12999 St. Charles Rock Rd.
Bridgeton, MO 63044-2483
Ph: 314.291.2000

www.hussmann.com