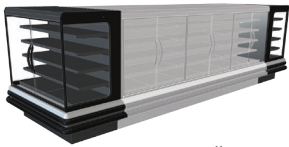
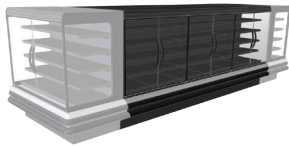


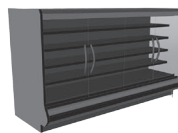
Specialty



"Island"
via E and C Modules



"In-Line" and "Stand Alone"
via I Modules



Isla Family

IM-R-DR

Isla Refrigerated Multi-Deck Self-Service Merchandiser
with EcoVision Doors for Prepared Food,
Deli, Meat, Dairy, Bakery, Beverage, and Produce Applications

Isla Refrigerated Multi-Deck Self-Service Merchandiser with EcoVision Doors for Prepared Food, Deli, Meat, Dairy, Bakery, Beverage, and Produce Applications

IM-05-DR

Heights: 58" (05)

Types: End (E); Center (C); In-Line (I)

Lengths: **End:** 5' (IM-05-E5-R-DR)

Center: 4' (IM-05-C4-R-DR)

5' (IM-05-C5-R-DR)

8' (IM-05-C8-R-DR)

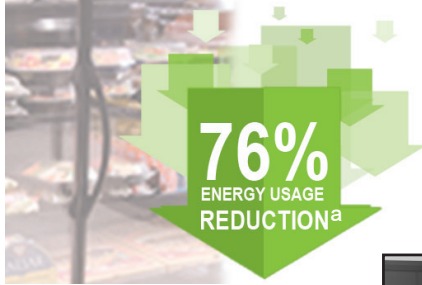
12' (IM-05-C12-R-DR)

Inline: 4' (IM-05-I4-R-DR)

5' (IM-05-I5-R-DR)

8' (IM-05-I8-R-DR)

12' (IM-05-I12-R-DR)



Outstanding Energy Reduction Opportunity

EcoVision II Plus Doors now reduce refrigeration energy use by up to 76%^a compared to open multi-deck cases (^a per year – foot)

Enhanced Reliability And Door Performance

Tested to 99% reliability at 10 years



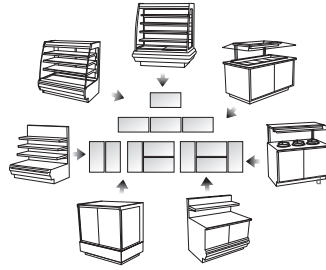
Excellent Visibility, Lighting, And Shopper Access

New ultra-thin door perimeter and handle design provide greater merchandise visibility. Vertical mullion lights mounted on the front of the case, shine directly on the face of your product to enhance illumination.

Improved Shelf Life and Food Safety Assurance

EcoVision Doors provide tighter product temperatures and reduce food safety risk from ambient conditions

Design Your Own Merchandiser



Flexible Layouts

Stand Alone, In-Line, 2, 3, 4-Sided Island
Deli, Prepared Food, Bakery, Hot Food, Produce, Meat, Beverage, Seafood, Floral...



Increased Packout

26% more packout capacity over our standard IM-R case.

Features.

- Ecovision doors
- EcoShine II Plus LED mullion and canopy lights
- Narrow 24" and 30" (3' height) french doors
- No heat required w door frames
- Painted exterior
- Modular coil system – 5 year warranty
- Energy efficient fans
- Solar digital thermometer
- Please reference color chart for choice of standard Hussmann paint and finish options

Options.

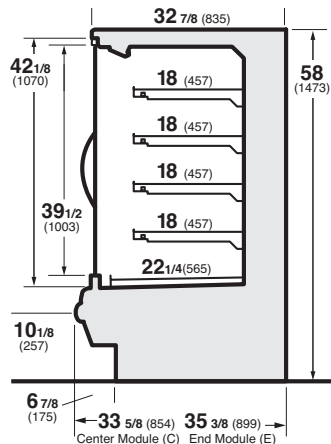
- 18" adjustable shelves with tag molding
- Liquid line hand valve
- Thermostat
- End panel, flush (inline)
- View ends
- End panel with wrap around bumper (inline)
- Solid transition panel (between dissimilar temp modules)
- Finished exterior back cover (inline): painted, stainless steel
- Special interior and exterior finishes* (consult your Hussmann sales representative)

Additional Information.

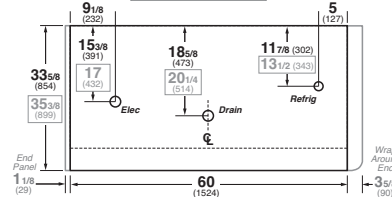
- Matching companion case lines: ISLA Family
- Refrigerated Self-Service: **IM-R**
- Hot Self-Service Food Counter: **IM-FH**
- Hot Self-Service Multi-Deck: **IM-H**
- Refrigerated Self-Service Food Counter: **IM-FR**
- Self-Contained Refrigerated Self-Service Multi-Deck: **IM-S**
- Soup Self-Service Food Counter: **IM-FS**
- Refrigerated/Dry Self-Service Bakery: **IM-BV**
- Self-Service Frozen: **SFG/SFNG**

IM-05R-ECDR

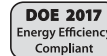
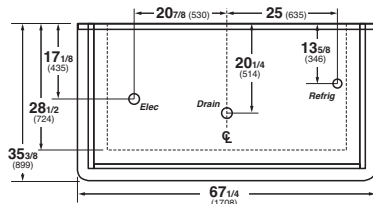
Refrigerated Self-Service with doors



IM-C5-R Center Module / IM-I5-R In-Line Module



IM-04-E5-R, IM-05-E5-R End Module



Hussmann refrigerated merchandisers configured for sale for use in the United States meet or surpass the requirements of the DOE 2017 energy efficiency standards.

* Some optional features may need to be certified by UL, NSF, and/or other 3rd party certification agencies. Contact Hussmann for verification or questions for availability.

† Only lighting configurations that are compliant with the U.S. Dept. of Energy (DOE) 2017 regulation are available for sale for use in the U.S.A.

NOTE: These merchandisers are designed for use in stores when temperature and humidity do not exceed 75°F and 55% R.H. We reserve the right to change or revise specifications and product design in connection with any feature of our products. Such changes do not entitle the buyer to corresponding changes, improvements, additions, or replacements for equipment previously sold or shipped.

For additional resources, contact your representative or visit www.hussmann.com.



Note. Use Hussmann's technical data sheets to get precise dimensions for all store layout purposes.

Intertek Intertek

HUSSMANN®

Hussmann Specialty
13770 Ramona Avenue
Chino, California 91710-5423
Ph: 800.395.9229

www.hussmann.com