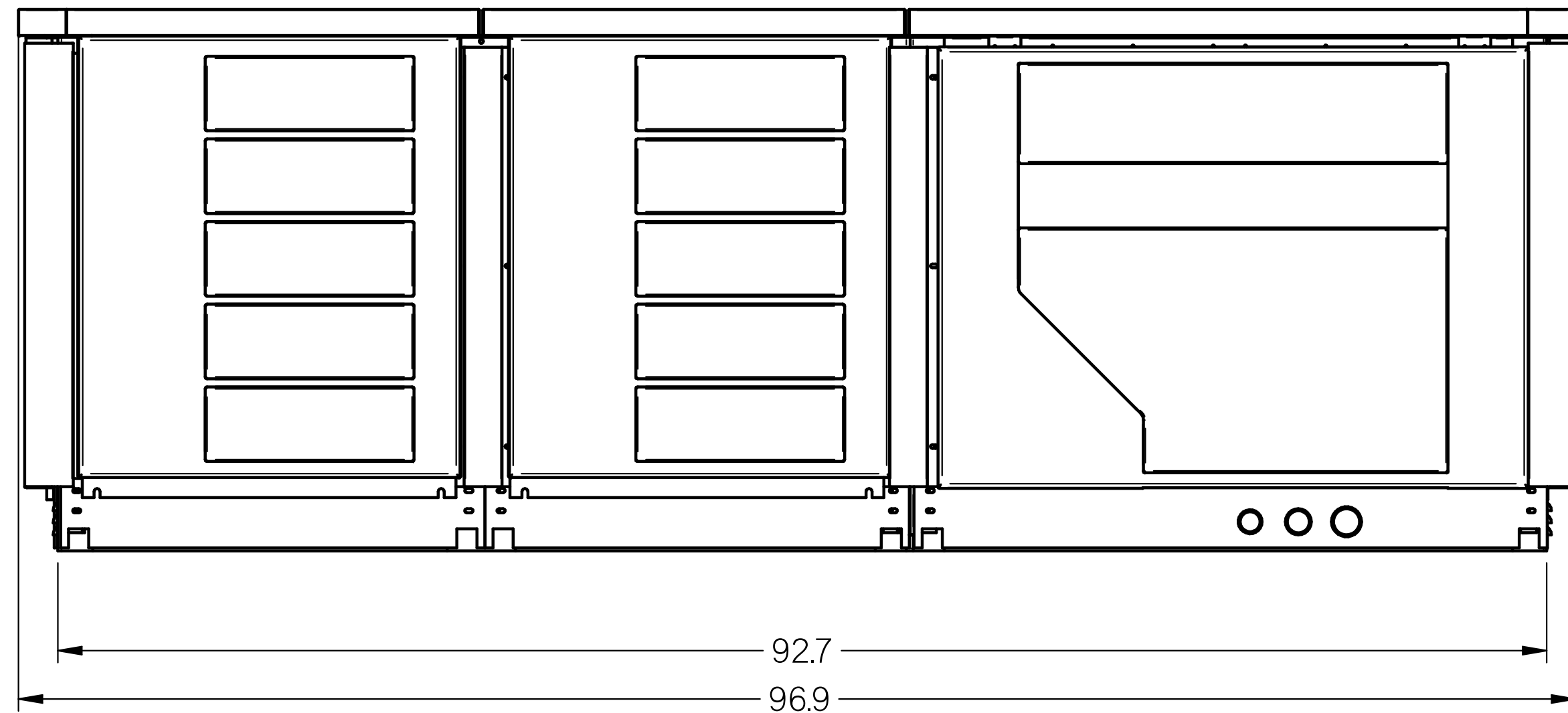
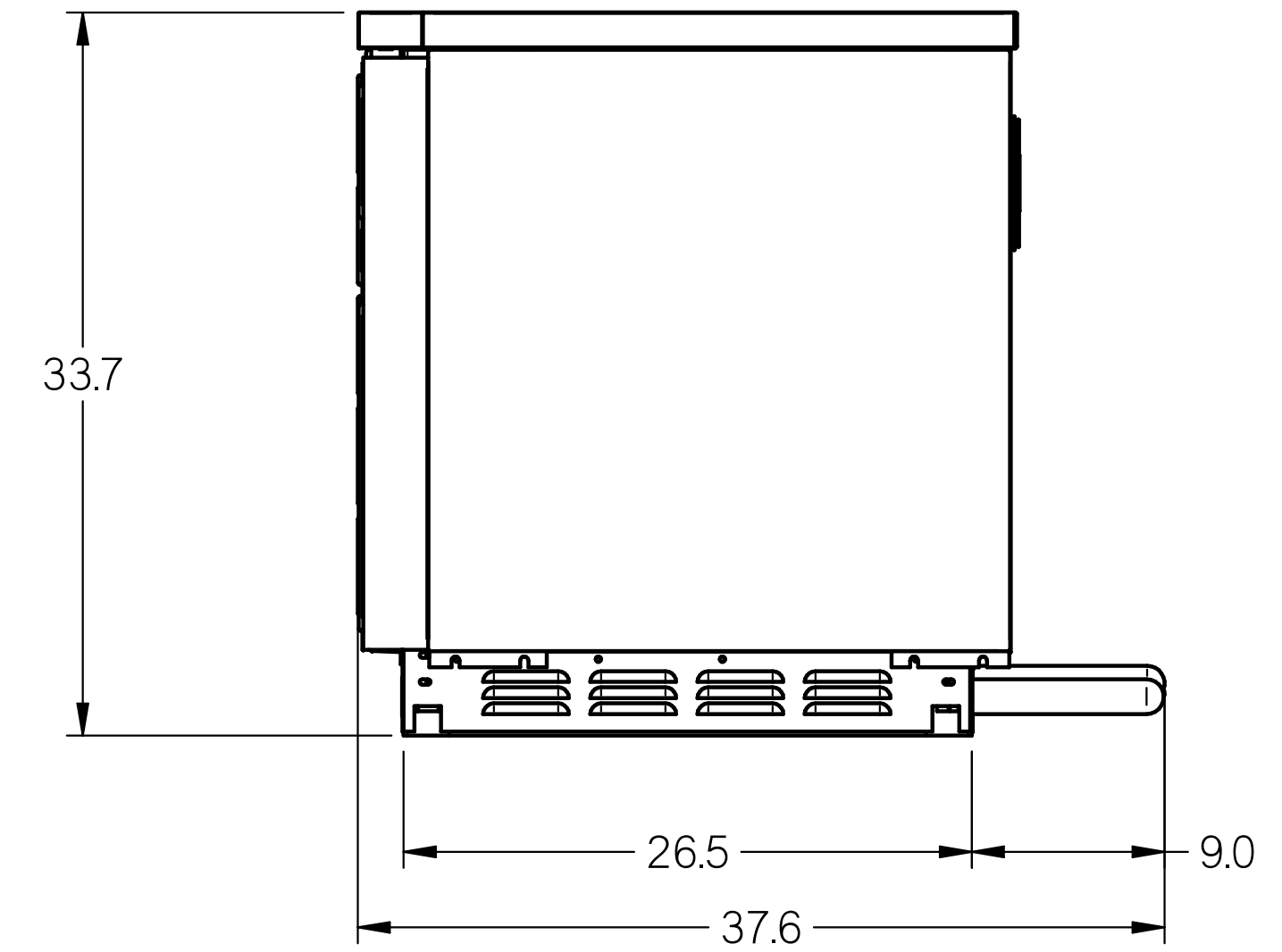


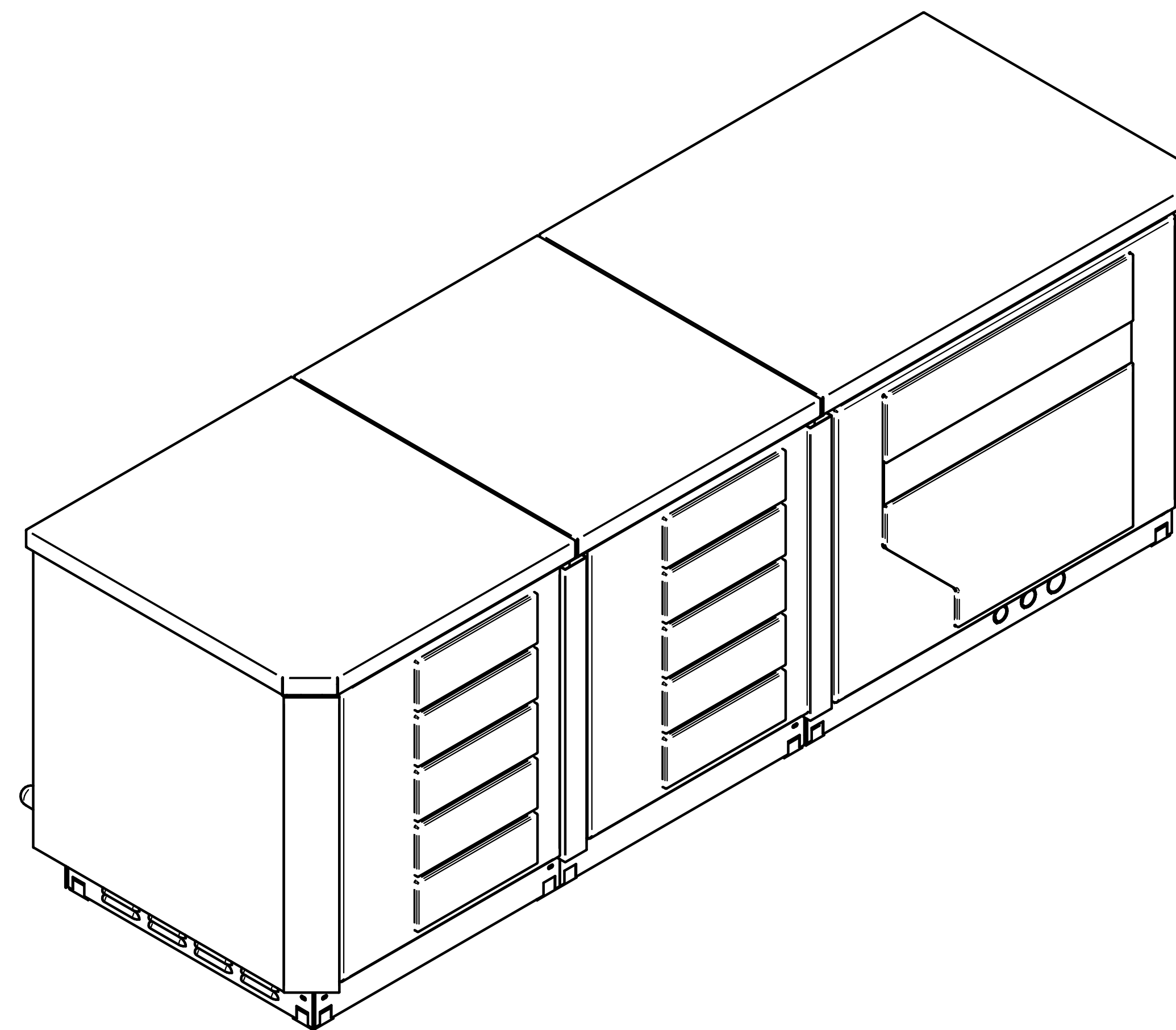
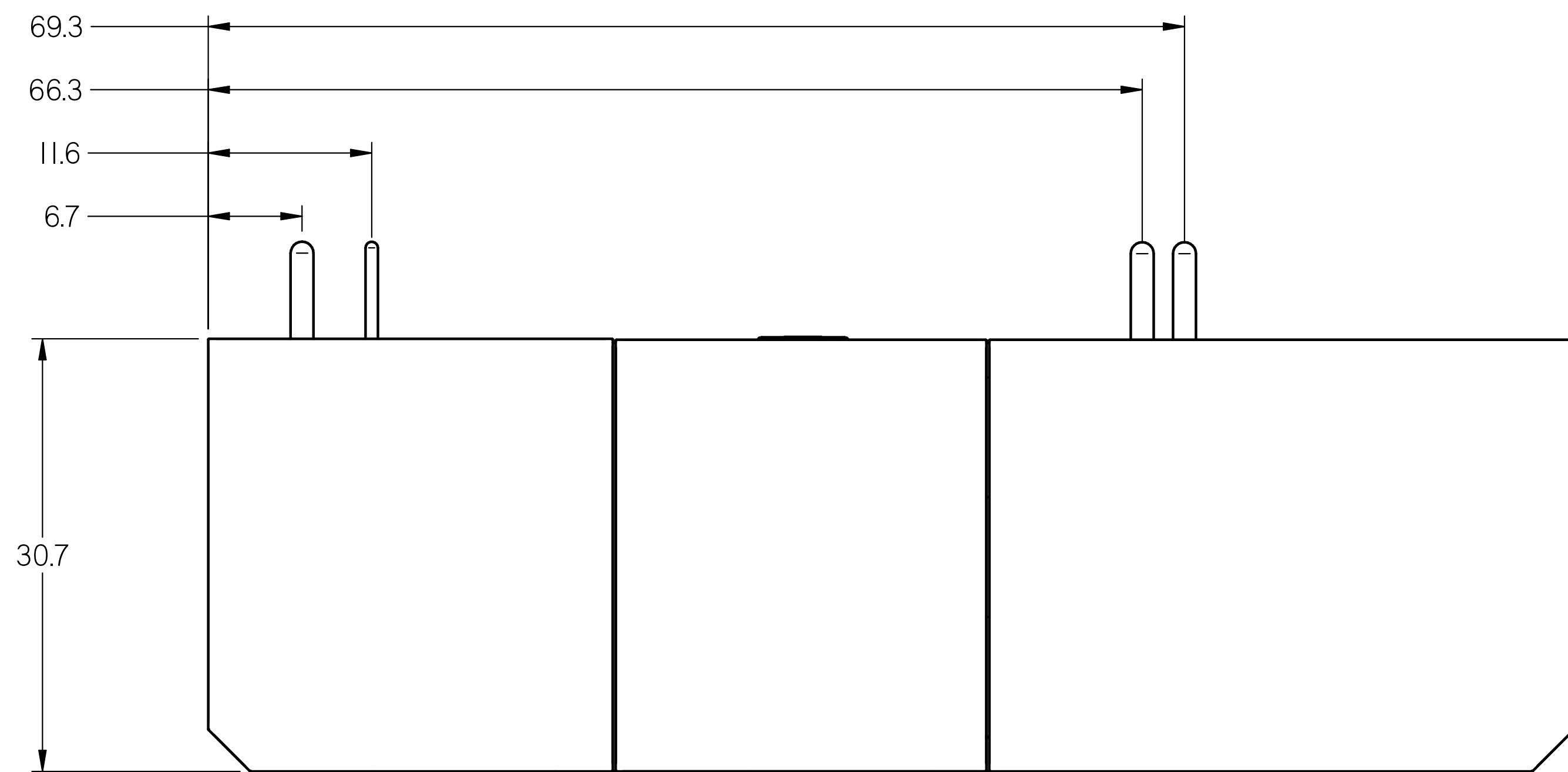
Front View




Side View



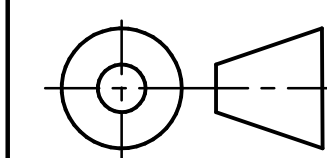
Plan View



NOTES:

1. APPLICABLE STANDARDS / SPECIFICATIONS  
ASME Y14.5M-1994, DIMENSIONS AND TOLERANCES
2. KEY PRODUCT CHARACTERISTICS PER EPR-0006 & IDENTIFIED WITH SYMBOL 
3. MATERIAL-
4. REF- Reference
5. TOLERANCES: LINEAR DIMENSION IS  $\pm 0.063$ .  
ANGLE DIMENSION IS  $\pm 2^\circ$ .

UNLESS OTHERWISE SPECIFIED  
DIMENSIONS ARE IN INCHES.



THIRD  
ANGLE  
PROJECTION

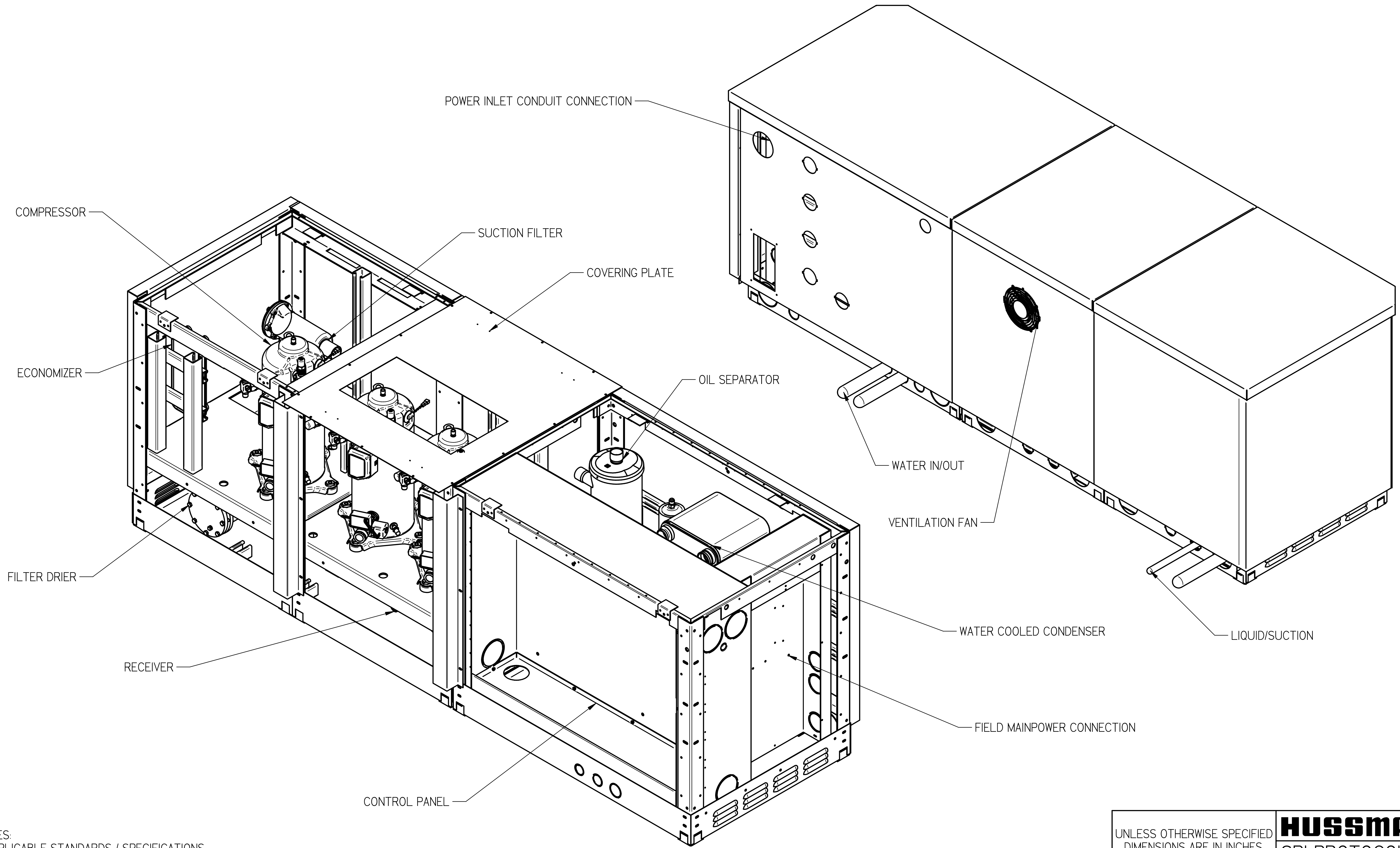
**HUSSMANN**<sup>®</sup>


SPI PROTOCOL

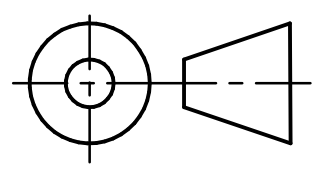
SHEET 1 OF 2

P/N

REV



NOTES:  
 1. APPLICABLE STANDARDS / SPECIFICATIONS  
 ASME Y14.5M-1994, DIMENSIONS AND TOLERANCES  
 2. KEY PRODUCT CHARACTERISTICS PER EPR-0006 & IDENTIFIED WITH SYMBOL   
 3. MATERIAL-  
 4. REF- Reference  
 5. TOLERANCES: LINEAR DIMENSION IS ±.063.  
 ANGLE DIMENSION IS ± 2°.

UNLESS OTHERWISE SPECIFIED DIMENSIONS ARE IN INCHES.  THIRD ANGLE PROJECTION	<b>HUSSMANN</b> <sup>®</sup>	
	SPI PROTOCOL	
SHEET 2 OF 2	P/N	REV

SWN 1.1 SHEET SIZE D