

HUSSMANN®

Specialty



Q-Series Family

Q1-DC

Single-Deck Service, Curved Glass Merchandiser
for Deli and Cheese Applications

www.hussmann.com

Husmann Q-Series Single-Deck Service, Curved Glass Merchandiser for Deli and Cheese Applications

Q1-DC



Merchandising Flair

Stylish curves combined with sleek design elements create enhanced product visibility. Granite or solid surface design allows for an amazing merchandising display unlike other service cases.



Quality Fit and Finish

Designed for ease of installation: it has a simplified glass adjustment with a special alignment design that assures fit and does not require unsightly joint trim.



Ergonomic Design

Large rear door opening and steep angle allow for ease of access to product.

Q1-DC Remote

Lengths: 4', 5', 6', 8', 9', 10', and 12'

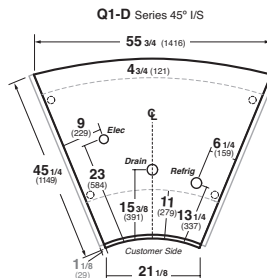
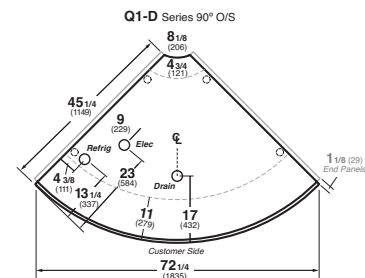
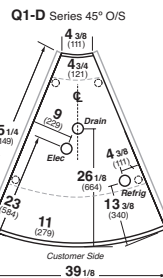
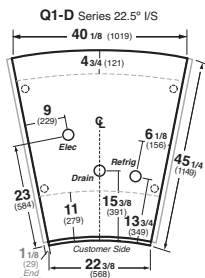
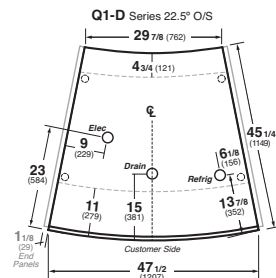
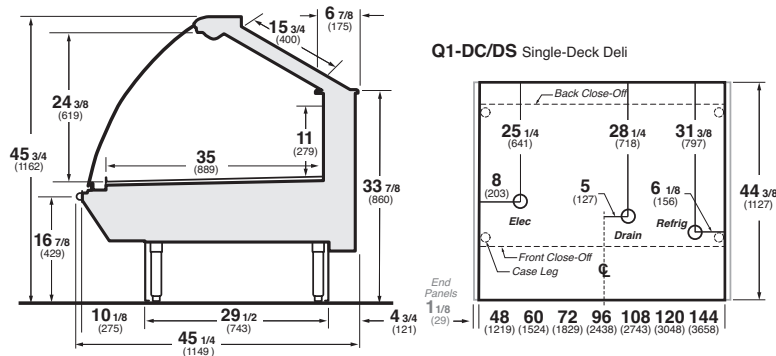
Wedges: 22.5° inside and outside wedges

45° inside and outside wedges

90° outside wedge

Q1-DC

Curved Glass - Single-Deck Deli



Features.

- Tempered, lift-up curved front glass with glass top
- Air sweep
- Coil corrosion protective coating
- Modular coil system (5 year warranty)
- Adjustable stainless steel legs
- Double-row of LED canopy lighting †
- Snap-on painted lower front panel
- Silver anodized glass hardware
- Black thermoplastic front and rear ledge
- Black vinyl cart bumper
- Removable brushed stainless steel interior wall and deck
- Snap-on stainless steel rear close-off panel
- Solar digital thermometer
- Electronic ballast
- Energy efficient fans †
- Thermostat and suction stop solenoid
- Please reference color chart for choice of standard Husmann paint and finish options (www.husmann.com)

Options.

- Non-glare glass (excluding 22° and 45° INSIDE wedges)
- LED ledge light †
- 1 or 2 step stainless steel display
- Corian®, granite or other solid surface front, rear, and top ledge surfaces (requires NSF approved materials)
- Rear doors (mirrored or clear glass only on straight cases)
- View or solid ends
- Mirror finish stainless steel inside end panels
- Stainless steel mock pedestals
- Top mounted scale stand with integrated and communication cables
- Liquid line shut-off hand valve
- 15 amp and GFCI duplex outlets
- Special interior and exterior finishes
- Custom lengths and options* (consult your Husmann sales representative)

Additional Information:

- Matching companion case lines: **Q1-DC**
- Single-Deck Self-Service: **Q1-SS**
- Service Hot Curved Glass: **QHC**
- Service Bakery Curved Glass: **Q3-BC**
- Service Seafood or Meat Curved Glass: **Q1-FC or Q1-MC**
- Service Seafood or Meat Curved Glass: **Q3-FC or Q3-MC**
- Multi-Deck Service Deli Curved Glass: **Q3-DC**
- Multi-Deck Self-Service: **Q3-SS/Q4-SS**
- Multi-Deck Self-Service Front w/Service Prep Top: **Q3-SP**



Husmann refrigerated merchandisers configured for sale for use in the United States meet or surpass the requirements of the DOE 2017 energy efficiency standards.

* Some optional features may need to be certified by UL, NSF, and/or other 3rd party certification agencies. Contact Husmann for verification or questions for availability.

† Only lighting configurations that are compliant with the U.S. Dept. of Energy (DOE) 2017 regulation are available for sale for use in the U.S.A.

NOTE: These merchandisers are designed for use in stores when temperature and humidity do not exceed 75°F and 55% R.H. We reserve the right to change or revise specifications and product design in connection with any feature of our products. Such changes do not entitle the buyer to corresponding changes, improvements, additions, or replacements for equipment previously sold or shipped.

For additional resources, contact your representative or visit www.husmann.com.



Note. Use Husmann's technical data sheets to get precise dimensions for all store layout purposes.

Intertek Intertek

Husmann Specialty
13770 Ramona Avenue
Chino, California 91710-5423
Ph: 800.395.9229

www.husmann.com

HUSSMANN®