

# HUSSmann®

---

Specialty



---

*R3 Family*

## R3D, CR3D

Refrigerated Service and Self-Service  
Deli Merchandiser with Rear Storage  
- Straight or Curved Glass

---

[www.hussmann.com](http://www.hussmann.com)

# Husmann Refrigerated Service and Self-Service Deli Merchandiser with Rear Storage - Straight or Curved Glass

## R3D, CR3D



### Versatility

This 3 Zone Merchandiser sets the pace for its segment. It allows for self-service, service, and extra storage all in a small footprint. Having a full range of configurations atop a high-capacity self-service case, the R3 Family redefines what a merchandiser should be.



### Product Integrity

Proven reliability and performance in Husmann's modular coil package. Our 5 year warranty is the best available.



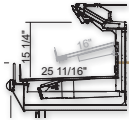
### All Metal Construction

Ensures durable and reliable service life.



### Clear View

Heated air sweep eliminates glass sweating maintaining a clear, unobstructed view to product.

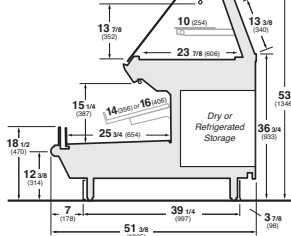


### More Product Area

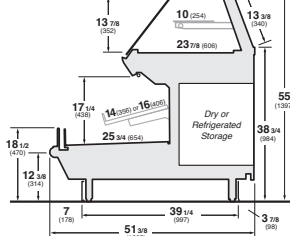
Self-service merchandising area increased over 25% deeper shelf - 16" and a deeper deck - 26".

## Remote Lengths: 4', 5', 6', 8', 10', and 12'

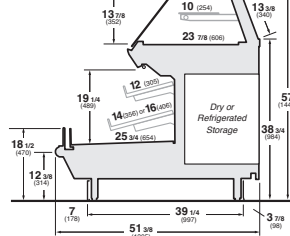
**R3-D**  
Deli Service  
Straight Glass / Self-Service



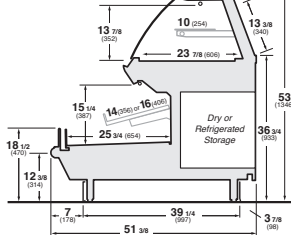
**R3-D +2**  
Deli Service  
Straight Glass / Self-Service +2 Height



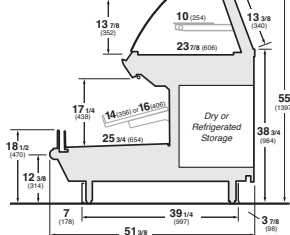
**R3-D +4**  
Deli Service  
Straight Glass / Self-Service +4 Height



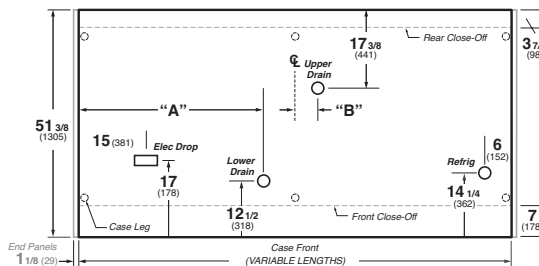
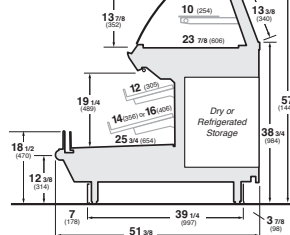
**CR3-D**  
Deli Service  
Curved Glass / Self-Service



**CR3-D +2**  
Deli Service  
Curved Glass / Self-Service +2 Height



**CR3-D +4**  
Deli Service  
Curved Glass / Self-Service +4 Height



Dimension	4'	5'	6'	8'	10'	12'
A	7 (178)	35 (889)	41 (1041)	53 (1346)	65 (1651)	65 (1651)
B	8 (203)	5 (127)	8 (203)	8 (203)	8 (203)	5 (127)



Intertek



Intertek

### Note.

Use Husmann's technical data sheets to get precise dimensions for all store layout purposes.

## Features.

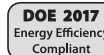
- Non-glare lift up glass (standard R3, optional for CR3)
- Heated air sweep (service)
- Adjustable legs
- Black interior (self-service)
- Stainless steel interior (service)
- Snap-on, stainless steel lower rear panel
- Energy efficient fans
- LED canopy lights †
- Thermostat/suction stop solenoid (service)
- Coil corrosion protective coating (service)
- EPR - refrigerated self-service
- Digital thermometers in each refrigerated section
- 15 amp scale outlet
- GFCI outlet
- RJ45 communication outlet
- Dry rear storage
- Please reference color chart for choice of standard Husmann paint and finish options ([www.husmann.com](http://www.husmann.com))

## Options.

- Easily movable 14" or 16" shelves; angle adjustable from 0° to 15° with recessed plugs (self-service)
- LED shelf lights †
- 10" shelf (service)
- Upper service shelf - glass or stainless steel
- Refrigerated rear storage with additional coil, thermostat and liquid line solenoid
- Stainless steel or white interior (self-service)
- Thermoplastic wrapping boards
- Scale shelf extension
- Increased self-service capacity (plus heights) 2" or 4" (allows 2nd row of 12" or 14" shelf)
- Solid or view end panels
- Paper cutter
- PTM - shelf and/or low front
- Additional GFCI outlet
- Mirrored rear door
- Stainless steel top in lieu of glass
- Service area shelf - glass or stainless steel 8" or 10"
- Special interior and exterior finishes\* (consult your Husmann sales representative)

## Additional Information.

- Matching family members: **R3 Family**
- Hot Service with Self-Service Front: **R3H or CR3H**
- Service Bakery with Self-Service Front: **R3B or CR3B**
- Service Prep Top with Self-Service Front: **R3P or CR3P**
- Service Meat/Fish with Self-Service Front: **R3-MF or CR3-MF**
- High Volume Service Meat/Seafood with Self-Service Front: **R3HV-MF or CR3HV-MF**
- High Volume Wide or Narrow Deli with Self-Service Front: **R3HV-WD or R3HV-ND, CR3HV-WD or CR3HV-ND**



Husmann refrigerated merchandisers configured for sale for use in the United States meet or surpass the requirements of the DOE 2017 energy efficiency standards.

\* Some optional features may need to be certified by UL, NSF, and/or other 3rd party certification agencies. Contact Husmann for verification or questions for availability.

† Only lighting configurations that are compliant with the U.S. Dept. of Energy (DOE) 2017 regulation are available for sale for use in the U.S.A.

NOTE: These merchandisers are designed for use in stores when temperature and humidity do not exceed 75°F and 55% R.H. We reserve the right to change or revise specifications and product design in connection with any feature of our products. Such changes do not entitle the buyer to corresponding changes, improvements, additions, or replacements for equipment previously sold or shipped.

For additional resources, contact your representative or visit [www.husmann.com](http://www.husmann.com).

## Husmann Specialty

13770 Ramona Avenue  
Chino, California 91710-5423  
Ph: 800.395.9229

[www.husmann.com](http://www.husmann.com)

# Husmann®