

HUSSMANN®

Impact™ Merchandisers



microDS™

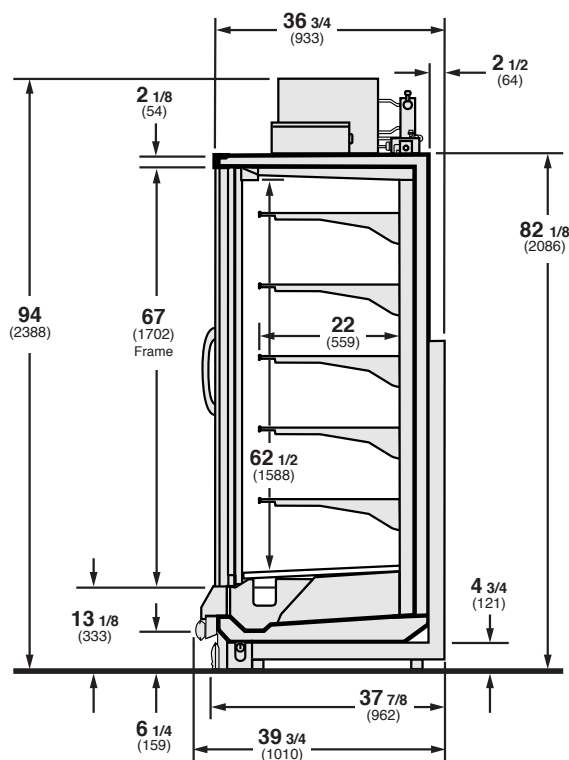
RLN-SP

Self-Contained Propane R290
Natural Refrigerant Merchandiser

Narrow Reach-In with Innovator Doors and Low Front
for Frozen Food Applications

www.hussmann.com

RLN-SP - Available in 2, 3, 4 and 5 doors.



Gross Refrigerated Volume* - **22.80 ft³/ ft**
(0.65 m³/ m)

*per ANSI/AHRI 1200-2013 appendix C. Volume Calculation



Features / Benefits

- Ideal for any low temperature for frozen food products
- Available with Husmann Innovator and Innovator III doors
- Merchandiser rejects heat through a continuous flow water-loop system at store level
- Environmentally-friendly R290 hydrocarbon refrigerant that has zero ozone depletion potential and 3 GWP (Global Warming Potential)
- High capacity, factory-balanced refrigeration system capable of maintaining ice cream temperature
- UL/EPH and DOE 2017 certified

Innovative Refrigeration

- Superior food quality - Single defrost cycle per day helps to protect food integrity
- Low maintenance and energy savings

Superior Merchandising and Flexibility

- RLN-SP is narrower bumper-to-back, saving about 4-inches from our standard reach-in merchandiser
- High pack-out in limited footprint allowing more product in the same space
- The display area per door is identical to the capacity of the standard depth reach-in
- EcoShine II LED customized for optimal product lighting
- Standard LED lights reduce relamping and other maintenance costs
- Fan plenums can be detached from coil for easy-to-clean case bottom
- CoreLink controller remote performance monitoring available

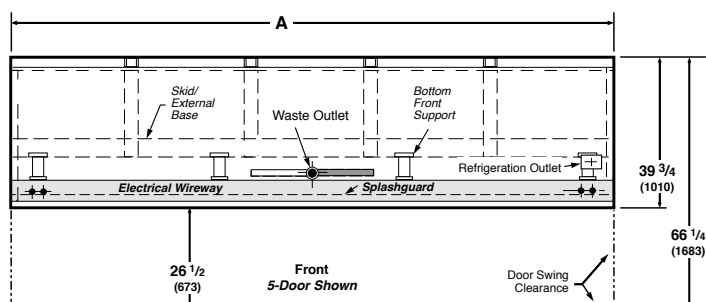
Standard Features

- Color Interior/Exterior: Black, White
- Exterior Sign Panel: None
- LED Lighting: Mullion
- Adjustable Leveling Legs: No
- Casters: No
- Hardwired: Yes
- Insulation: Polyurethane Foam - CFC Free

Optional Accessories

- Lift-out bottom rack for easier cleaning/service
- Heavy-duty front panels and deck pans
- Low energy doors
- Additional display shelves available - Max of 5 per door
- Bumper - Front and ends
- Price tag molding
- Product stops
- Contour fascia option
- Heavy-duty shelves

Plan View



Dimensions	2 DOOR	3 DOOR	4 DOOR	5 DOOR
A	62 (1575)	92 1/2 (2350)	122 7/8 (3121)	144 3/8 (3668)

Note: Contact your sales representative for information on possible availability of additional case lengths

Note

Use Husmann's technical data sheets to get precise dimensions for all store layout purposes.



Husmann refrigerated merchandisers configured for sale for use in the United States meet or surpass the requirements of the DOE 2017 energy efficiency standards.

NOTE: These merchandisers are designed for use in stores when temperature and humidity do not exceed 75°F (23.9°C) and 55% R.H.

NOTE: We reserve the right to change or revise specifications and product design in connection with any feature of our products. Such changes do not entitle the buyer to corresponding changes, improvements, additions, or replacements for equipment previously sold or shipped.