



RL, RM, RMF

Reach-In Merchandisers for Frozen Food,
Ice Cream, Floral, and Medium Temperature Applications

- Available with Hussmann “Innovator”,
“Innovator II” or “Innovator III” Glass Doors.

Husmann Reach-In Merchandisers for Frozen Food, Ice Cream, Floral, and Medium Temp Applications

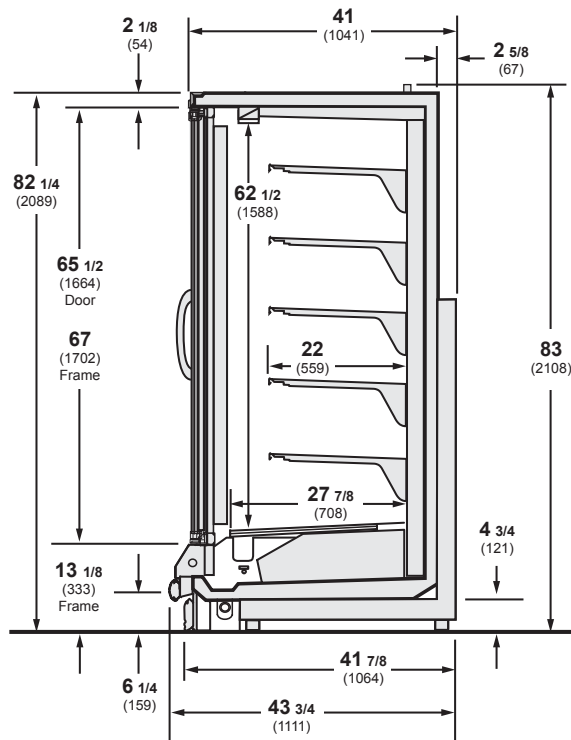
RL - Low Temp Reach-In (Frozen Food or Ice Cream)

RM - Medium Temp Reach-In

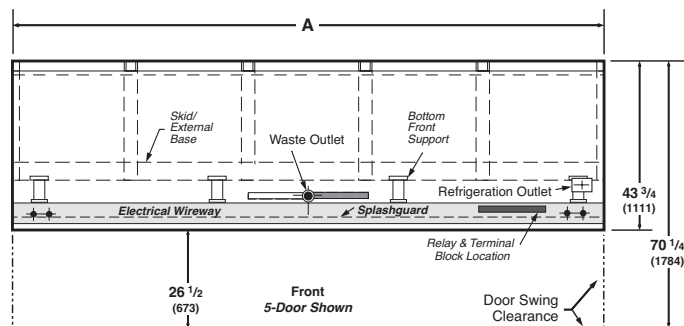
RMF - Floral Reach-In

Available in 2, 3, 4, and 5 door models.

One door available on RL only.



Plan View



Dimensions	1 DOOR	2 DOOR	3 DOOR	4 DOOR	5 DOOR
A	31 1/2 (800)	62 (1575)	92 1/2 (2350)	122 7/8 (3121)	153 3/8 (3896)

Notes:

Overall case length without ends or partitions. Contact your sales representative for information on possible availability of additional case lengths.

Note

Use Husmann's technical data sheets to get precise dimensions for all store layout purposes.

Available with "Innovator", "Innovator II" or "Innovator III" Glass Doors.

All reach-ins are available with Innovator, Innovator II or Innovator III industry-leading glass doors, providing energy efficiency, better lighting, and easier maintenance than traditional glass doors.

Greater Energy Efficiency.

Innovator III doors are 43% more efficient than Innovator doors and provide 13% total case energy savings compared to a case with Innovator doors. Innovator III is a lower energy heated door that can be used in all climate conditions. For even more energy savings, Innovator II is a no-heat door that offers 32% case energy savings.

Standard LED Lighting.

EcoShine II LED lighting is standard. The lights are optimized for uniform brightness and substantially lower energy costs compared to fluorescents.



Husmann refrigerated merchandisers configured for sale for use in the United States meet or surpass the requirements of the DOE 2017 energy efficiency standards.

NOTE: These merchandisers are designed for use in stores when temperature and humidity do not exceed 75°F and 55% R.H.

NOTE: We reserve the right to change or revise specifications and product design in connection with any feature of our products. Such changes do not entitle the buyer to corresponding changes, improvements, additions, or replacements for equipment previously sold or shipped.

For additional resources, contact your representative or visit www.husmann.com.

HUSMANN®

Husmann Corporation
12999 St. Charles Rock Rd.
Bridgeton, MO 63044-2483
Ph: 314.291.2000

www.husmann.com