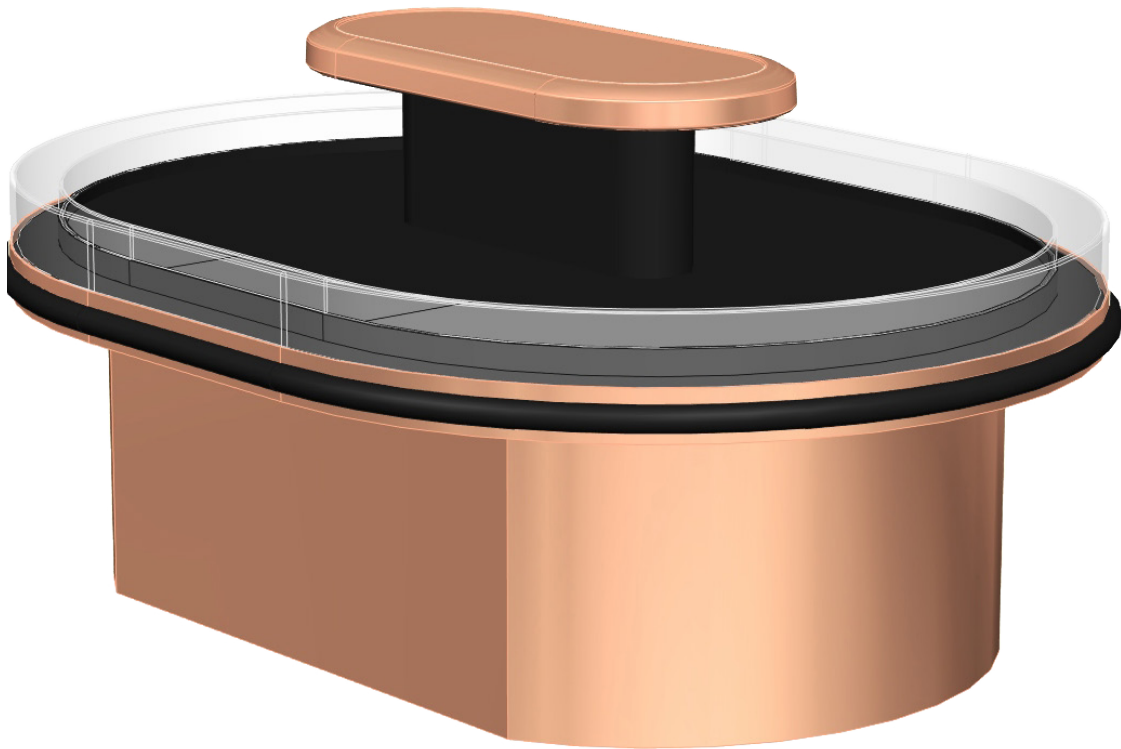


**HUSSMANN®**

---

Specialty



---

*Entyce Family*

**TY1-6**

Single Level • 6' Width

Self-Service Shop Around Island Merchandiser  
For Deli, Dairy, Sandwiches, Cheese, Grab-n-Go,  
Beverage, Produce Applications

---

**Entyce** *Your Shoppers*

[www.hussmann.com](http://www.hussmann.com)

# Husmann Self-Service Shop Around Island Merchandiser For Deli, Dairy, Sandwiches, Cheese, Grab-n-Go, Beverage, Produce Applications

## TY1-6



**Exceptional merchandising**  
with open, cascading product presentation.

**Entyce your Shopper**

**Designed to guide your shopper** around to see everything and inspire impulse buying.

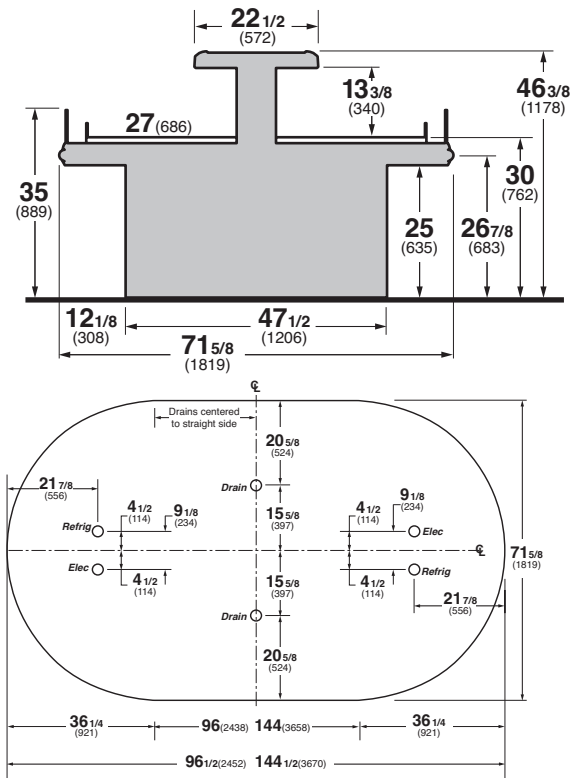
### EcoShine II Plus LEDs (Standard)



- Saves 66% energy over T8s
- 85+ CRI for bringing out natural colors
- Diffused lighting eliminates pixilation and hot spots on product packaging

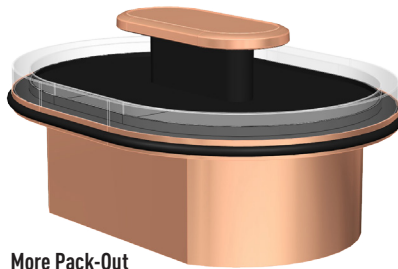
### Island Merchandisers Remote - 8' (TY1-6X-8I-R), 12' (TY1-6X-12I-R)

#### TY1-6 Single Level 6' wide Island



**Entyce Family**  
Flexible layouts to meet your store planning needs with multiple levels, widths, lengths, and styles

Entyce has a solution for you.	PRODUCT LEVELS	FOOTPRINT	SHAPE



**More Pack-Out**  
High pack out in small footprint.

**Product Temp Enhancement**  
Developed for more stringent ambient conditions - Balanced air distribution and advanced coil technology.



### Features.

- Painted exterior
- Tempered radius glass perimeter
- LED EcoShine II canopy lighting
- Black metal deck and back wall
- 2" black vinyl cart bumper
- Energy efficient fan motors.
- Dual forced air refrigeration coils
- DOE and ETL approved, and FDA compliant
- Husmann colors: please reference Color Chart for choice of standard Husmann paint and finish options ([www.husmann.com](http://www.husmann.com))

### Options.

- Optional base heights
- Special stainless steel tube bumper
- Black angled product display inserts
- Solid surface top inlay
- Stainless or white interior
- Liquid line shut-off valve
- Custom lengths and options\* (consult your Husmann sales representative)



Husmann refrigerated merchandisers configured for sale for use in the United States meet or surpass the requirements of the DOE 2017 energy efficiency standards.

\* Some optional features may need to be certified by UL, NSF, and/or other 3rd party certification agencies. Contact Husmann for verification or questions for availability.

NOTE: These merchandisers are designed for use in stores when temperature and humidity do not exceed 75°F and 55% R.H. We reserve the right to change or revise specifications and product design in connection with any feature of our products. Such changes do not entitle the buyer to corresponding changes, improvements, additions, or replacements for equipment previously sold or shipped.

For additional resources, contact your representative or visit [www.husmann.com](http://www.husmann.com).



Intertek

Intertek

**Note.**  
Use Husmann's technical data sheets to get precise dimensions for all store layout purposes.

**HUSSMANN®**

**Husmann Corporation**  
13770 Ramona Avenue  
Chino, California 91710  
Ph: 800.395.9229

[www.husmann.com](http://www.husmann.com)