

HUSSMANN®

Specialty



R3 Family

VR3-D

3-Zone Vertical Glass Service Deli Top,
Multi-Deck, Self Service Front Merchandiser With Rear Storage

www.hussmann.com

Husmann R3 Family 3-Zone Vertical Glass Service Deli Top, Multi-Deck, Self Service Front Merchandiser With Rear Storage

VR3-D

Designed to Maximize Creative Merchandising

Cube design allows for interchangeable merchandising solutions:

- Single or Two Shelf Display
- Bulk Display
- Step Display
- Other Accessories



Reduced Maintenance and Greater Reliability

with elimination of lift-up glass hardware

Great Pack-Out in Narrow Footprint

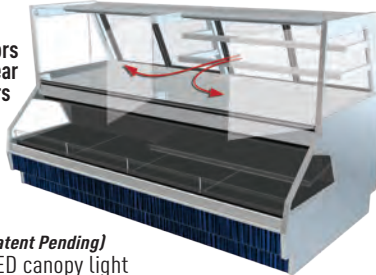
Our over/under case has has great pack-out in a narrow footprint

Hinged French Doors and Large Rear Sliding Doors

allow for ease of access to clean and stock

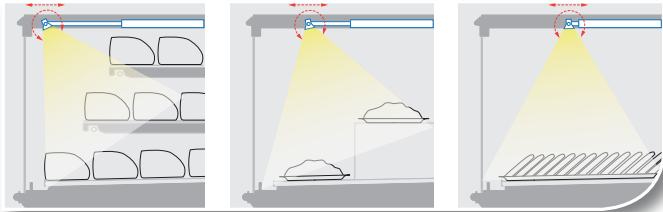
Stunning Product Visibility

Increase sales with all glass merchandising display that ensures stunning product visibility



Increase Sales with FocalPoint™ (Patent Pending)

New adjustable multi-directional LED canopy light



Standard Lighting

NEW FocalPoint™ LED Lighting

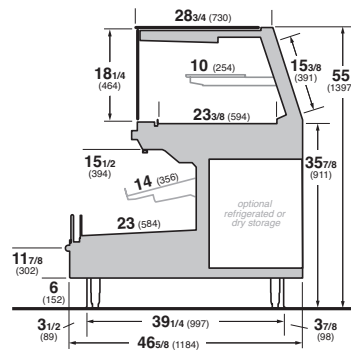
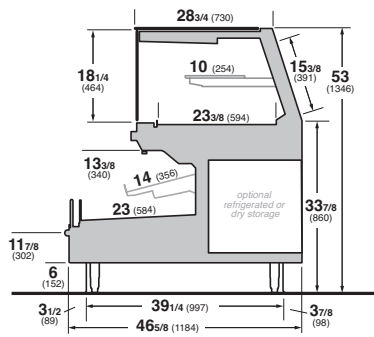


Provides the most effective way to highlight product facings across interchangeable merchandising

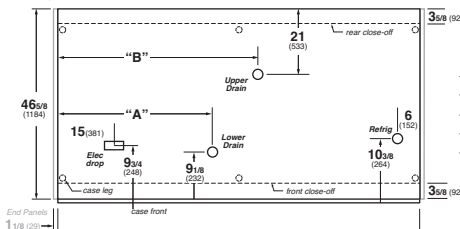
Remote Lengths: 4', 6', 8', and 12'

VR3-D Vertical Glass Standard Service Dome, Multi Deck Self Service

VR3-D+2 Vertical Glass Standard Service Dome, Multi Deck Self Service +2 Height



VR3-D, VR3-B



Length	"A"	"B"
4'	7 (178)	32 (813)
6'	41 (1041)	44 (1118)
8'	53 (1346)	56 (1422)
12'	65 (1651)	77 (1956)

Featured.

- Front hinged french tempered glass doors
- 3/8" tempered glass top
- Clear glass rear sliding doors
- NEW FocalPoint™ adjustable EchoShine II LED canopy light (Patent Pending)
- Heated air sweep (service)
- Black interior (self-service)
- Stainless steel interior (service)
- Thermostat/suction stop solenoid (service)
- Digital thermometers in each refrigerated section
- Energy efficient fans
- EPR (self-service)
- Dry rear storage
- Painted lower front panel
- Black vinyl cart bumper
- Modular coil system (5-year warranty)
- Coil corrosion protective coating (service)
- Please reference color chart for choice of standard Husmann paint and finish options (www.husmann.com)

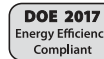
Options.

- 10" and/or 12" LED lighted stainless steel or glass shelves for service section
- 14" shelf lighted black for self-service section
- Increased self-service capacity (plus heights) +2" or +4"
- +4" height allows for 2nd row of 12" or 16" shelf
- Additional LED canopy light in rear top of case
- Mirrored rear sliding doors
- Refrigerated rear storage with additional coil, thermostat and liquid line solenoid
- Stainless steel interior (self-service)
- Thermoplastic wrapping boards
- View or solid ends
- Mirror finish stainless steel inside end panels
- Dedicated scale outlet and Cat 5 scale connections
- 15 amp GFCI duplex outlets
- Liquid line shut-off hand valve
- Scale shelf extension
- Paper cutter
- PTM
- Custom lengths and options* (consult your Husmann sales representative)

Additional Information.

Matching Companion Case Lines

- Vertical Glass 3 Zone Bakery: VR3-B
- High Volume Vertical Glass 3 Zone Bakery: VR3HV-B
- High Volume Vertical Glass 3 Zone Deli: VR3HV-D



Husmann refrigerated merchandisers configured for sale for use in the United States meet or surpass the requirements of the DOE 2017 energy efficiency standards.

* Some optional features may be certified by UL, NSF, and/or other 3rd party certification agencies. Contact Husmann for verification or requests for such certification.

NOTE: These merchandisers are designed for use in stores when temperature and humidity do not exceed 75°F and 55% R.H. We reserve the right to change or revise specifications and product design in connection with any feature of our products. Such changes do not entitle the buyer to corresponding changes, improvements, additions, or replacements for equipment previously sold or shipped.

For additional resources, contact your representative or visit www.husmann.com.



Intertek



Intertek

Note.

Use Husmann's technical data sheets to get precise dimensions for all store layout purposes.

HUSMANN®

Husmann Specialty
13770 Ramona Avenue
Chino, California 91710-5423
Ph: 800.395.9229

www.husmann.com