



SELF-SERVICE DELI

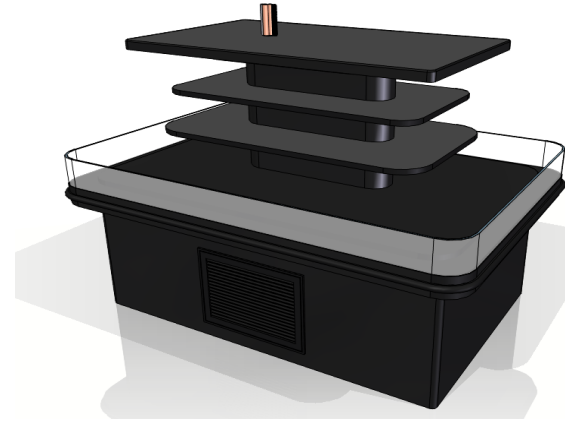
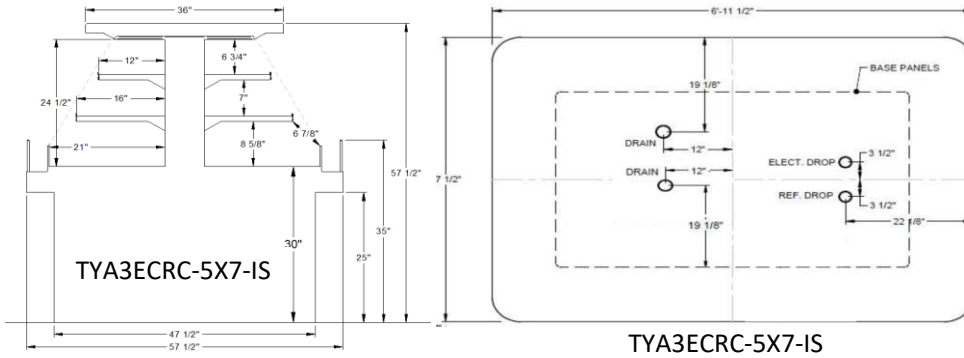
HUSSMANN - TYA3ECRC-5X7-IS SELF-CONTAINED (MONTERREY)

REVISION DATE

04/07/21



Hussmann refrigerated merchandisers configured for sale for use in the United States meet or surpass the requirements of the DOE 2017 energy efficiency standards.



REFRIGERATION DATA:

CASE LENGTHS	CASE USAGE	CONVENTIONAL CAPACITY *** (BTU/HR)	AVERAGE DISCHARGE AIR** (°F) (SEE SETPOINTS BELOW)	VELOCITY (FT/MIN)
5X7I	DELI TYPE 1	15470	30 ~ 34	125~175
5X7I	DELI TYPE 2	16100	30 ~ 34	125~175

**FRONT DISCHARGE AIR MEASURED INSIDE AIR CURTAIN HONEYCOMB

***REFRIGERATION NOTES:

- 1) CAPACITY FOR REFERENCE ONLY
- 2) APPROVED UP TO TYPE II CONDITIONS (80°F/55% RH)
- 3) DEFOST FOR IS BASED ON TERMINATION TEMP, WHICH UNDER NORMAL CIRCUMSTANCES, IS SHORTER THAN FAILSAFE TIME.

REFRIGERATION DATA CONTINUED:

USAGE	ELEC. THERMOSTAT / AIR SENSOR SETTINGS		DEFROST TYPE	TIME (MIN)	DEFROST FREQUENCY (#/DAY)	TERM. TEMP (°F) COIL ONLY	DRIP TIME	DEFROST WATER (LBS/DAY/FT)
	SET POINT (°F)	DIFFERENTIAL (°F)						
TYPE 1	24	12	OFF TIME	50	12	46	N/A	12
TYPE 2	24	12	OFF TIME	50	12	46	N/A	14.5

ELECTRICAL DATA:

STANDARD FANS, HEATERS, LED LIGHTS (115 VOLT)

CASE LENGTH	EVAPORATOR FANS					CANOPY LIGHTS LED		OPTIONAL LED SHELF LIGHTS		MAX. LED LOAD (W/ ALL OPTIONS)		ANTI-SWEAT HEATERS		CONVENIENCE OUTLETS (OPTIONAL)		
	# OF EVAP FANS	BLADE DIA. (IN.)	BLADE PITCH (°)	AMPS	WATTS	AMPS	WATTS	AMPS	WATTS	AMPS	WATTS	AMPS	WATTS	# OUTLETS	VOLTS	AMPS
5X7I	6	8	25	1.8	48	0.6	70	0.3	31	0.9	101	0.5	60	1	120	15

CONDENSING UNIT AND EVAPORATIVE PANS

CASE LENGTH	CONDENSING UNIT					EVAPORATIVE PAN			NEMA PLUG	MOPD (AMPS)	EST. REFG. CHR.G. (LBS) R404A
	NOM. HP	REFRIG.	Hz/Ph	Volts	RLA	VOLTS	AMPS	WATTS			
5X7I	3	R-448A	60 / 1	208	18.0	240	6.3	2000	CS6365C	50	9.0

OPTIONAL HIGH OUTPUT LED LIGHTS (115 VOLT)

CASE LENGTH	CANOPY LIGHTS H.O. LED		OPTIONAL SHELF		MAX. H.O. LED LOAD	
	AMPS	WATTS	AMPS	WATTS	AMPS	WATTS
5X7I	N/A	N/A	N/A	N/A	N/A	N/A