

Item	Part #	Description	Wiring Item #	Item	Part #	Description	Wiring Item #
FAN ASSEMBLIES, AND THERMOSTATS				LAMPS AND BALLASTS			
A.	<u>6W</u> Fan Assembly		(1)			None	
	0058698	Fan Motor, Evaporator					
	0382383	Fan Blade embossing toward motor					
B.	0382028	Standard Non-adjustable Thermostat	(2)				
C.	0137880	Optional Adjustable Refrigeration Thermostat	(3)				

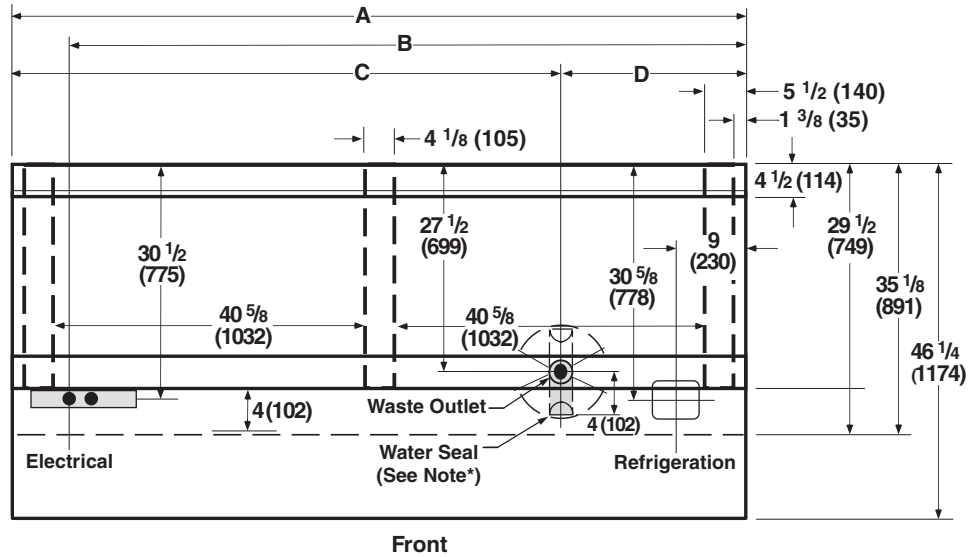
Note: Changed items have been underlined.

Engineering Plan Views

Dimensions shown as inches and (mm).

Meat and Produce

09-2003



	4 Ft	8 Ft	12 ft
General			
(A) Length of Case (<i>without ends or partitions</i>)	48 1/4 (1226)	96 3/8 (2448)	144 1/2 (3670)
Maximum outside dimensions of case back to front (<i>includes bumper</i>)	46 1/4 (1174)	46 1/4 (1174)	46 1/4 (1174)
Back of case to front of splashguard	35 1/8 (891)	35 1/8 (891)	35 1/8 (891)
Back of case to outside edge of front skidrail	29 1/2 (749)	29 1/2 (749)	29 1/2 (749)
Width of skidrail	4 1/2 (114)	4 1/2 (114)	4 1/2 (114)
Right end of case to inside edge of external support	5 1/2 (140)	5 1/2 (140)	5 1/2 (140)
Distance between inside edges of external support and center support	NA	40 5/8 (1032)	40 5/8 (1032)
Distance between inside edges of center supports	NA	NA	44 (1118)
Width of external support	4 1/8 (105)	4 1/8 (105)	4 1/8 (105)
Stub-up area between front skidrail and splashguard	4 (102)	4 (102)	4 (102)
Electrical Service (<i>Electrical Field Wiring connection point</i>)			
(B) Right end of case to center of farthest knockout	38 1/4 (972)	88 3/8 (2245)	136 1/2 (3467)
Back outside of case to center of knockout	30 1/2 (775)	30 1/2 (775)	30 1/2 (775)
Length of electrical raceway	34 1/2 (878)	34 1/2 (878)	34 1/2 (878)
Waste Outlet			
(C) Left end of case to center of waste outlet	28 1/8 (714)	72 1/4 (1835)	72 1/4 (1835)
(D) Right end of case to center of waste outlet	24 1/8 (613)	24 1/8 (613)	72 1/4 (1835)
Back outside of case to center of waste outlet	24 1/8 (613)	27 1/2 (699)	27 1/2 (699)
Water Seal			
Edge of water seal to center of waste outlet	4 (102)	4 (102)	4 (102)
Outside diameter of drip pipe	1 1/2 (38)	1 1/2 (38)	1 1/2 (38)
*Note: Water seal outlet must clear front skid rail.			
Refrigeration Outlet			
Right end of case to center of refrigeration outlet	9 (230)	9 (230)	9 (230)
Back outside of case to center of refrigeration outlet	30 5/8 (778)	30 5/8 (778)	30 5/8 (778)

Impact M1E
Meat/Delicatessen
Precut & Packaged Produce

REFRIGERATION DATA

Note: This data is based on store temperature and humidity that does not exceed 75°F and 55% R.H.

	M1E
Discharge Air °F	27
Evaporator °F	18
Unit Sizing °F	16

Btu/hr/ft**	M1E
Parallel	545
Conventional	580

**For all refrigeration equipment other than Hussmann, use conventional BTU values.

DEFROST DATA

	M1E
Frequency (hr)	6
Defrost Water (lb/ft/day)	2
(±15% based on case configuration and product loading.)	

OFFTIME	M1E
Temp Term °F	43°F
Failsafe Minutes	35

ELECTRIC OR GAS Not Recommended

Standard Defrost Thermostat
 Close on rise: close 43°F — open 33°F

CONVENTIONAL CONTROLS

Low Pressure Backup Control	M1E
CI/CO**	14°F / 8°F

Indoor Unit Only, Pressure Defrost Termination** 48°F

**Use a Temperature Pressure Chart to determine PSIG conversions.

PHYSICAL DATA

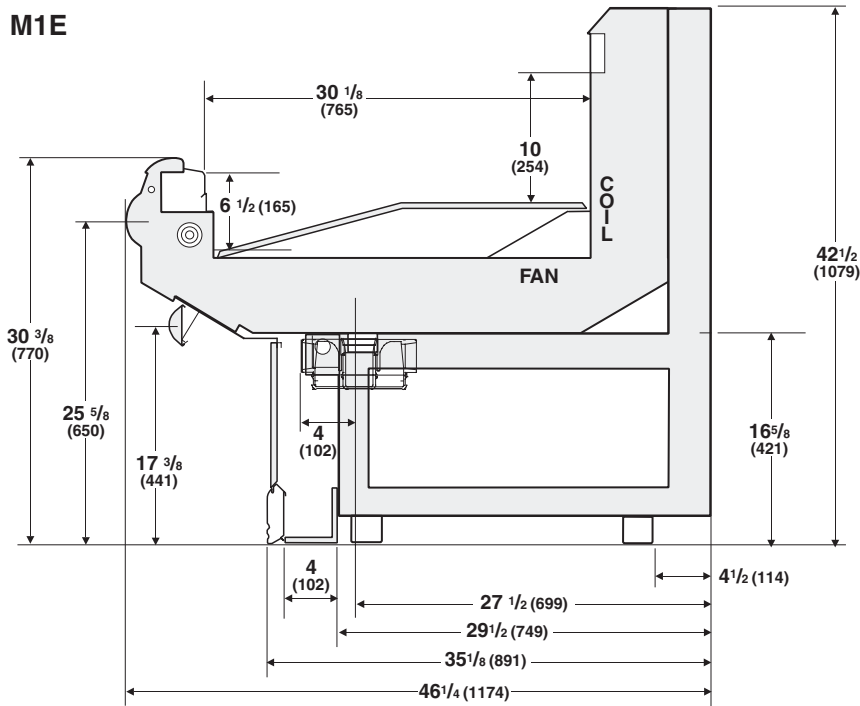
Merchandiser Drip Pipe (in.)	1 1/2
Liquid Line (in.)	3/8
Suction Line (in.)	5/8

Estimated Charge (lbs)***	M1E
4 ft	0.9
8 ft	1.7
12 ft	2.3

***This is an average for all refrigerant types actual refrigerant charge may vary by approximately half a pound.

Length (in.) Added to Lineup by Each End or Insulated Partition	1 1/2
--	-------

Dimensions shown as inches and (mm).



NSF Certification

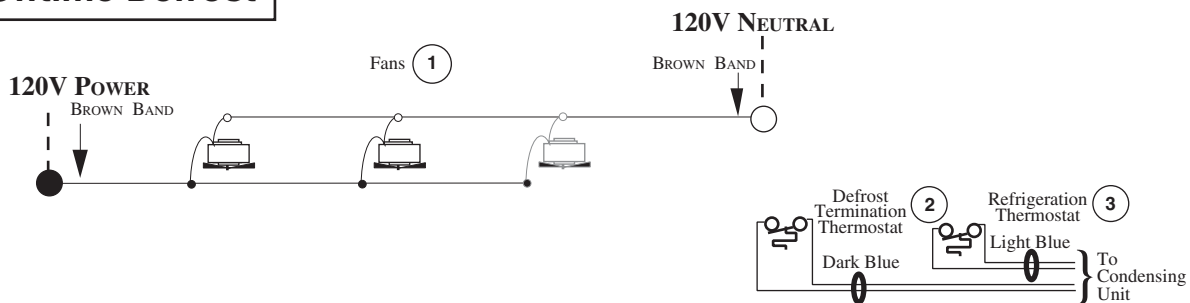
These merchandisers are manufactured to meet ANSI /National Sanitation Foundation (NSF®) Standard #7 requirements.

Impact M1E
Meat/Delicatessen
Precut & Packaged Produce

Electrical Data

	<u>4 ft</u>	<u>8 ft</u>	<u>12 ft</u>			
Number of Fans — 6W	<u>1</u>	<u>2</u>	<u>3</u>			
	Amperes			Watts		
	<u>4 ft</u>	<u>8 ft</u>	<u>12 ft</u>	<u>4 ft</u>	<u>8 ft</u>	<u>12 ft</u>
Merchandiser Fans						
Standard (120V 60Hz)	<u>0.50</u>	1.00	1.50	<u>39</u>	78	117
Export (230V 50Hz)	<u>0.28</u>	0.56	0.84	<u>44</u>	88	132
Energy Efficient (120V 60Hz)	<u>0.26</u>	0.52	0.78	<u>18</u>	36	54
Minimum Circuit Ampacity						
With Standard Fans (120V 60Hz)	<u>0.70</u>	1.20	1.70			
Export (230V 50Hz)	<u>0.48</u>	0.76	1.04			
With Energy Efficient Fans (120V 60Hz)	<u>0.46</u>	0.72	0.98			
Maximum Over Current Protection 120V	<u>20</u>	20	20			
Maximum Over Current Protection 230V	<u>15</u>	15	15			
Supplemental Gas Heaters	NA					
208V 1Φ Electric Defrost	NA					
Standard Lighting	None			Optional Lighting	None	
	None				None	

Fan Wiring Offtime Defrost **2 & 3 Fans**



WARNING

All components must have mechanical ground, and the merchandiser must be grounded.

CIRCLED NUMBERS = PARTS LIST ITEM NUMBERS

GRAYED COMPONENTS IN 12 FOOT MODELS ONLY.

● = 120V POWER ○ = 120V NEUTRAL