

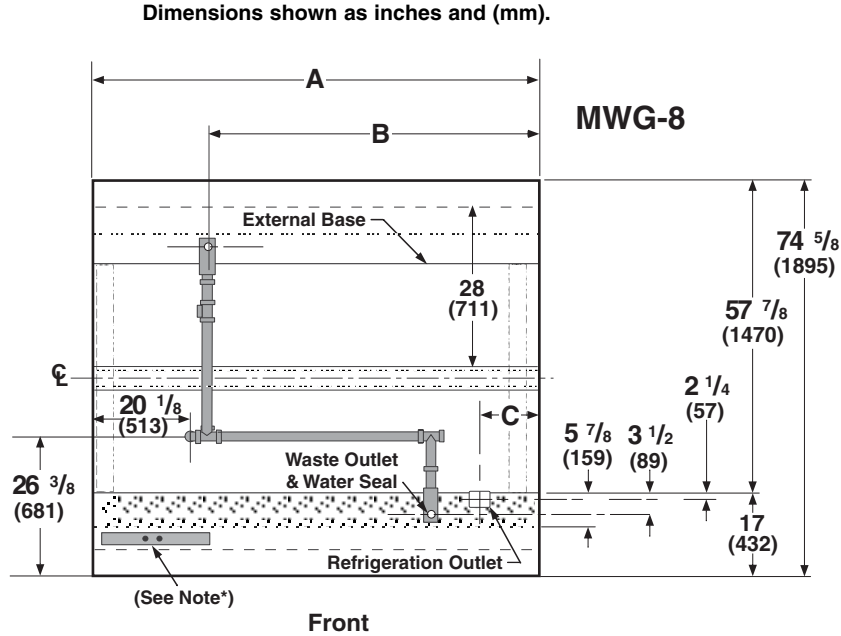
Item	Part #	Description	Wiring Item #	Item	Part #	Description	Wiring Item #
<b>FAN ASSEMBLIES AND THERMOSTATS</b>				<b>LAMPS AND BALLASTS</b>			
A.	9W Fan Assembly		(1)	None			
	0378349	Fan Motor, Evaporator (120V)					
	0141070	Fan Blade, 8 ft and 12 ft Case embossing toward motor					
	0315470	Fan Blade, 6 ft Case embossing toward motor					
B.	0137880	Optional Adjustable Refrigeration Thermostat	(2)				

**Note:** Changed items have been underlined.

# Engineering Plan Views

## Wide Island Meat

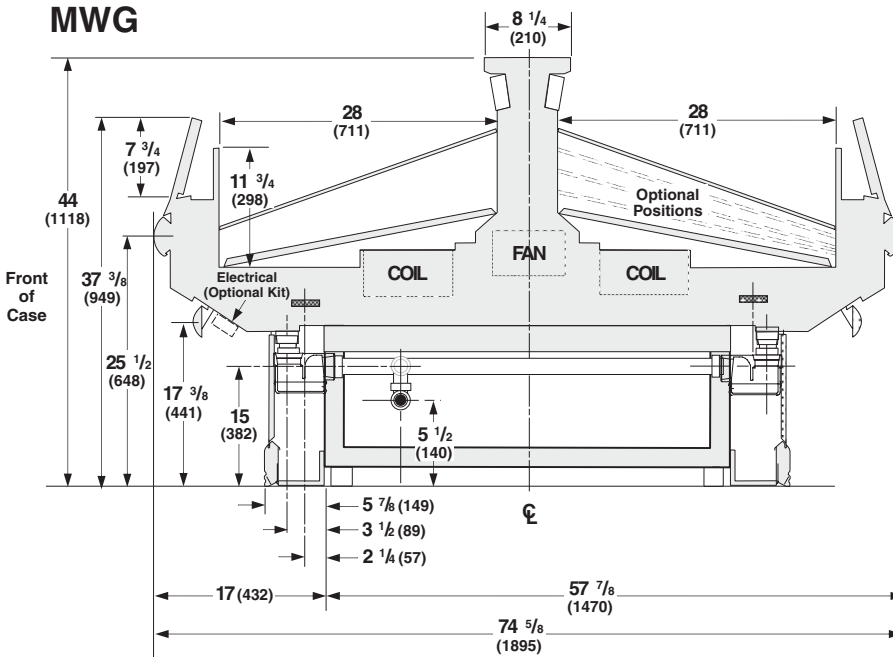
12-2003



	6 ft	8 ft	12 ft
<b>General</b>			
<b>(A)</b> Case Length	72 1/4 (1835)	96 3/8 (2448)	144 1/2 (3670)
<i>Each End and Partition adds 1 1/2 in. (38 mm) to the length of the lineup.</i>			
Maximum outside dimension of case back to front (includes bumper)	74 5/8 (1895)	74 5/8 (1895)	74 5/8 (1895)
Front of splashguard to outside edge of front skidrail	5 7/8 (149)	5 7/8 (149)	5 7/8 (149)
Back of case to outside edge of front skidrail	57 5/8 (1470)	57 5/8 (1470)	57 5/8 (1470)
Front of case to outside edge of front skidrail	17 (432)	17 (432)	17 (432)
Width of skidrail	4 1/2 (115)	4 1/2 (115)	4 1/2 (115)
Stub-up area between front skidrail and splashguard	4 7/8 (124)	4 7/8 (124)	4 7/8 (124)
<b>Electrical Service</b>			
<i>*Note: Electrical Box (Optional Kit)</i>			
<b>Waste Outlet</b>			
<b>(B)</b> Righthand end of case to the center of waste outlet	46 1/2 (1175)	72 1/4 (1835)	72 1/4 (1835)
Center of waste outlet to outside edge of front skidrail	3 1/2 (89)	3 1/2 (89)	3 1/2 (89)
<b>Water Seal</b>			
Edge of water seal to center of waste outlet	7 (178)	7 (178)	7 (178)
Outside diameter of drip piping	1 1/2 (38)	1 1/2 (38)	1 1/2 (38)
<i>Field installed water seal outlets, tees, and connectors are shipped with the case.</i>			
<b>Refrigeration Outlet</b>			
<b>(C)</b> Righthand end of case to center of refrigeration outlet	9 1/8 (230)	9 1/8 (230)	9 1/8 (230)
Center of refrigeration outlet to outside edge of front skidrail	2 1/4 (57)	2 1/4 (57)	2 1/4 (57)
Outside diameter of the liquid line	3/8 (9.5)	3/8 (9.5)	3/8 (9.5)
Outside diameter of the suction line	7/8 (22)	7/8 (22)	7/8 (22)

**Impact MWG**

Dimensions shown as inches and (mm).



**REFRIGERATION DATA**

Note: This data is based on store temperature and humidity that does not exceed 75°F and 55% R.H.

	<b>MWG</b>
<b>Discharge Air °F</b>	26
<b>Evaporator °F</b>	18
<b>Unit Sizing °F</b>	16

<b>Btu/hr/ft**</b>	<b>MWG</b>
<b>Parallel</b>	778
<b>Conventional</b>	890

\*\*For all refrigeration equipment other than Hussmann, use conventional BTU values.

**DEFROST DATA**

<b>Frequency (hr)</b>	6
-----------------------	---

*ELECTRIC OR GAS* Not Recommended

<b>Defrost Water (lb/ft/day)</b>	2.2
----------------------------------	-----

<b>OFFTIME</b>	<b>MWG</b>
<b>Temp Term °F</b>	43°F
<b>Failsafe Minutes</b>	60

**CONVENTIONAL CONTROLS**

<b>Low Pressure Backup Control</b>	<b>MWG</b>
<b>CI/CO**</b>	<b>12°F / 2°F</b>

**Indoor Unit Only, Pressure Defrost Termination\*\*** **43°F**

\*\*Use a Temperature Pressure Chart to determine PSIG conversions.

**PHYSICAL DATA**

Merchandise Drip Pipe (in.)	1 1/2
Liquid Line (in.)	3/8
Suction Line (in.)	7/8

**Estimated Charge (lbs)\*\*\***

	<b>MWG</b>
<b>6 ft</b>	2.3
<b>8 ft</b>	2.8
<b>12 ft</b>	4.3

\*\*\*This is an average for all refrigerant types actual refrigerant charge may vary by approximately half a pound.

<b>Length (in.) added to Lineup by Each End or Insulated Partition</b>	1 1/2
--	-------

**NSF Certification**

These merchandisers are manufactured to meet ANSI /National Sanitation Foundation (NSF®) Standard #7 requirements.

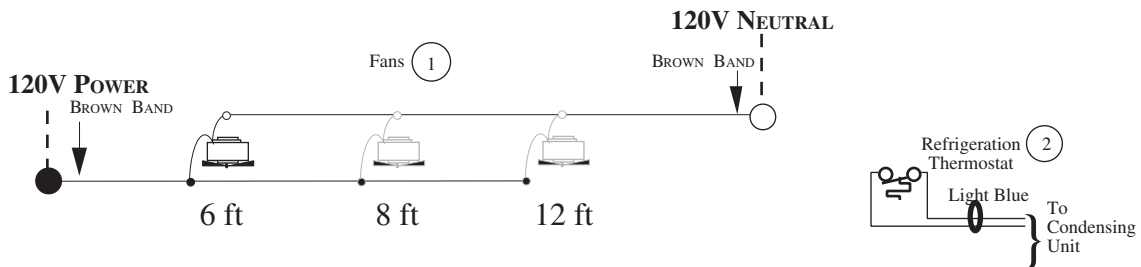
**Impact MWG**  
Meat / Delicatessen

**Electrical Data**

	6 ft	8 ft	12 ft			
<b>Number of Fans –9W</b>	<b>1</b>	<b>2</b>	<b>3</b>			
	<b>Amperes</b>			<b>Watts</b>		
<b>Merchandise</b>	<b>6 ft</b>	<b>8 ft</b>	<b>12 ft</b>	<b>6 ft</b>	<b>8 ft</b>	<b>12 ft</b>
Fans						
Standard (120V 60Hz)	<u>0.77</u>	<u>1.54</u>	<u>2.31</u>	<u>62</u>	<u>124</u>	<u>186</u>
Export (230V 50Hz)	<u>0.47</u>	<u>0.94</u>	<u>1.41</u>	<u>70</u>	<u>140</u>	<u>210</u>
Energy Efficient (120V 60Hz)	<u>0.38</u>	<u>0.76</u>	<u>1.14</u>	<u>25</u>	<u>50</u>	<u>75</u>
Constant on Anti-sweat Heaters	NA					
Cycling Anti-sweat Heaters	NA					
Minimum Circuit Ampacity						
With Standard Fans (120V 60Hz)	<u>0.97</u>	<u>1.74</u>	<u>2.51</u>			
Export (230V 50Hz)	<u>0.67</u>	<u>1.14</u>	<u>1.61</u>			
With Energy Efficient Fans (120V 60Hz)	<u>0.58</u>	<u>0.96</u>	<u>1.34</u>			
Maximum Over Current Protection (120V)	20	20	20			
Maximum Over Current Protection (230V)	15	15	15			
Supplemental Gas Heaters	NA					
<b>208V 1Φ Electric Defrost</b>	NA					
<b>Standard Lighting</b>	<b>Optional Lighting</b>		<b>Optional Shelf Lighting</b>			
None	None		None			

**Fan Wiring**  
**Offtime Defrost**

1, 2 & 3 Fans



**WARNING**

All components must have mechanical ground, and the merchandiser must be grounded.

CIRCLED NUMBERS = PARTS LIST ITEM NUMBERS

● = 120V POWER ○ = 120V NEUTRAL