

We reserve the right to change or revise specifications and product design in connection with any feature of our products. Such changes do not entitle the buyer to corresponding changes, improvements, additions or replacements for equipment previously sold or shipped.

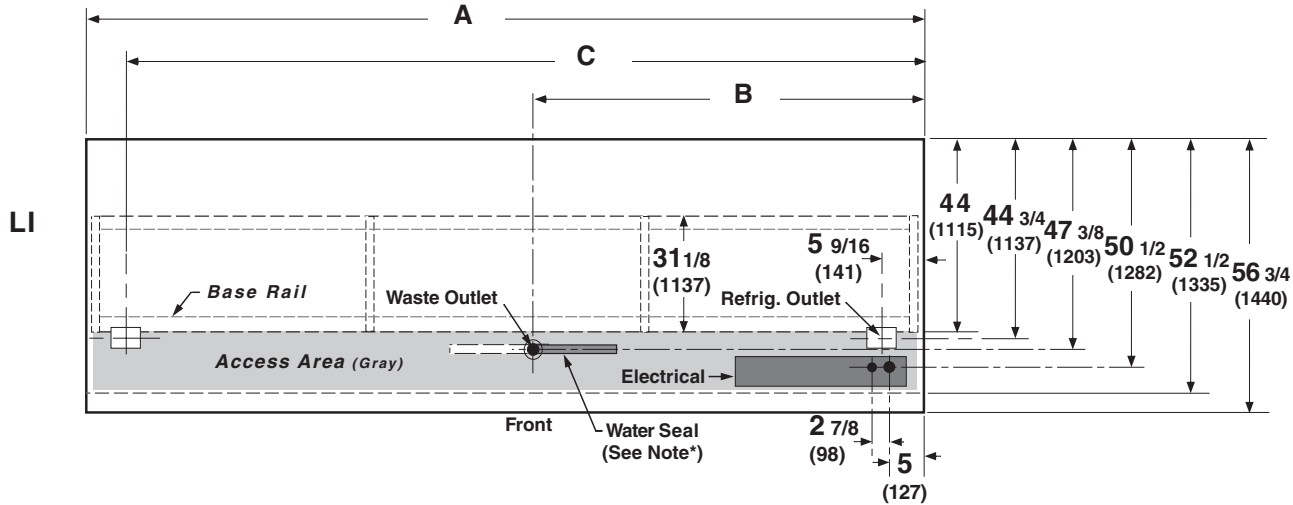
Item	Part #	Description	Wiring Item #	Item	Part #	Description	Wiring Item #
FAN ASSEMBLIES AND THERMOSTATS				HEATERS			
A.	4W Fan Assembly		(1)	E.	0395709	Modular Electric Defrost Heaters, 208V (HE.4850409)	(5)
	0392457	Fan Motor, Standard (MO.4410101)					
	0409511	Fan Blade, embossing toward motor (FB.0409511)					
B.	Optional Adjustable Refrigeration Thermostat		(2)	F.	Drip Pan Heaters, Electric 208V		(6)
					0392413	8 foot case (HE.0392413)	
					0392414	12 foot case (HE.0392414)	
C.	0398557	Defrost Termination Thermostat (Electric Defrost only) (CT.4440611)	(3)		Drip Pan Heaters, Koolgas 120V		(7)
					0421238	8 foot case (HE.4850496)	
					0421239	12 foot case (HE.4850497)	
D.	0425304	Heater Switch (Koolgas Defrost only) (CT.0425304)	(4)	G.	Nosing Anti-sweat Heaters		(8)
					0401605	8 foot case (Discharge) (HE.0401605)	
					0401557	8 foot case (Return) (HE.4850467)	
					0401606	12 foot case (Discharge) (HE.4850471)	
					0401558	12 foot case (Return) (HE.4850468)	




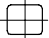
NOTE: Revision H corrects heater data on Page 4.

Engineering Plan Views

Low Temperature Intermediate Wide Island Models

Dimensions shown as inches & (mm).



	8 ft	12 ft
General		
(A) Case Length <i>(without ends or partitions)</i> <i>(Each end and insulated partition adds 2 in. (51 mm) to case line up.)</i> Maximum O/S dimension of case back to front <i>(includes bumper)</i>	96 1/4 (2445)	144 1/2 (3670)
Back of case to front of splashguard	56 3/4 (1442)	56 3/4 (1442)
Back of case to O/S edge of front base rail	52 1/2 (1334)	52 1/2 (1334)
Width of base rail	44 (1118)	44 (1118)
Stub-up area (gray) between base rail and splashguard	2 1/8 (54)	2 1/8 (54)
	7 5/8 (194)	7 5/8 (194)
Electrical Service  <i>(Electrical Field Wiring connection point)</i>		
RH End of case to center of nearest knockout	5 (127)	5 (127)
Back O/S of case to center of knockout	50 1/2 (1283)	50 1/2 (1283)
Waste Outlets 		
(B) RH End of case to the center of waste outlet	19 3/4 (502)	76 1/2 (1943)
LH End of case to center of waste outlet	38 (965)	76 5/8 (1946)
Back O/S of case to center of waste outlet	47 3/8 (1203)	47 3/8 (1203)
Water Seal 		
Edge of water seal to center of waste outlet	11 (279)	11 (279)
O/S diameter of drip pipe lines	1 1/2 (38)	1 1/2 (38)
Note*: Field installed water seal outlet, tees and connectors are shipped with case.		
Refrigeration Outlet 		
RH end of case to center of RH refrigeration outlet	5 9/16 (141)	5 9/16 (141)
(C) LH end of case to center of LH refrigeration outlet	88 3/8 (2245)	138 7/8 (3527)
Back O/S of case to center of refrigeration outlet	44 3/4 (1137)	44 3/4 (1137)

Impact LI
Frozen Food & Ice Cream

REFRIGERATION DATA

Note: This data is based on store temperature and humidity that does not exceed 75°F and 55% R.H.

	FF	IC
Discharge Air (°F)	-12	-22
Evaporator (°F)	-20	-30
Unit Sizing (°F)	-23	-33
Btu/hr/ft	FF	IC
Parallel	460	470
Conventional	475	485

DEFROST DATA

	FF	IC
Frequency (hr)	24	24
Defrost Water (lb/ft/day)	0.75	0.60
<i>(± 15% based on case configuration and product loading).</i>		

<i>ELECTRIC</i>	FF	IC
Temp Term (°F)	48°	48°
Failsafe (minutes)	60	60

<i>GAS</i>	FF	IC
Duration (minutes)	15	18
OFFTIME	Not Recommended	

Standard Defrost Thermostat
Close on rise: close 48°F — open 33°F

CONVENTIONAL CONTROLS

	FF	IC
Low Pressure Backup Control		
CI/CO (Temp °F)*	-27/-39	-27/-39

Indoor Unit Only, Pressure Defrost Termination (Temp °F)*
Not Recommended

*Use a Temperature Pressure Chart to determine PSIG conversions.

PHYSICAL DATA

Merchandiser Drip Pipe (in.)	1 1/4
Merchandiser Liquid Line (in.)	3/8
Merchandiser Suction Line (in.)	7/8

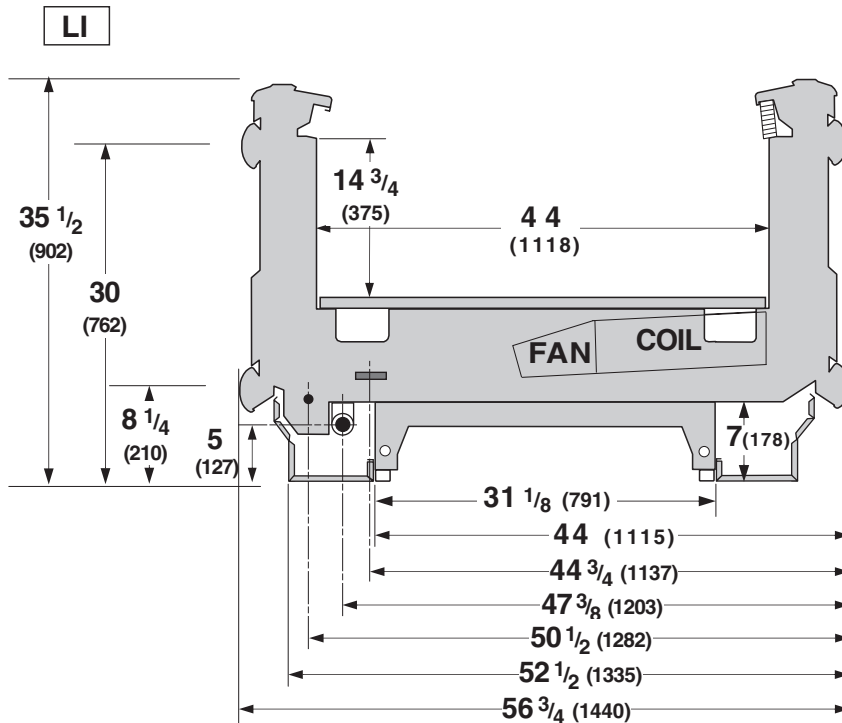
Estimated Charge (lb)**

8 ft	1.7
12 ft	2.6

**This is an average for all refrigerant types. Actual refrigerant charge may vary by approximately half a pound.

Length Added to Lineup by:
Each End/Partition (in.) 1 1/2

Dimensions shown in inches & (mm).



NSF Certification

These merchandisers are manufactured to meet ANSI /National Sanitation Foundation (NSF®) Standard #7 requirements.

Impact LI Frozen Food & Ice Cream
--

Electrical Data

	8 ft	12 ft
Number of Fans – 4W	2	3
(Energy Efficient fan motors are not available for End or End-compartment models)		

			Amperes		Watts	
			8 ft	12 ft	8 ft	12 ft
Evaporator Fans						
120V	60Hz	Standard	0.62	0.93	48	72
120V	50Hz	Standard	NA			
230V	60Hz	Export	0.30	0.45	48	72
230V	50Hz	Export	0.36	0.54	54	81
120V	60Hz	Energy Efficient	0.28	0.42	20	30
230V	60Hz	Energy Efficient	NA			

Nosing Anti-sweat Heaters (on fan circuit)						
120V	60Hz	Standard	0.94	1.40	112	168
230V	50Hz	Export	0.49	0.73	112	168

Cycling Anti-sweat Heaters			NA			
230V	50hz	Export	NA			

Minimum Circuit Ampacity						
120V	60Hz	Standard	1.76	2.53		
120V	50Hz	Standard	NA			
230V	60Hz	Export	0.99	1.38		
230V	50Hz	Export	1.05	1.47		
120V	60Hz	Energy Efficient	1.42	2.02		
230V	60Hz	Energy Efficient	NA			

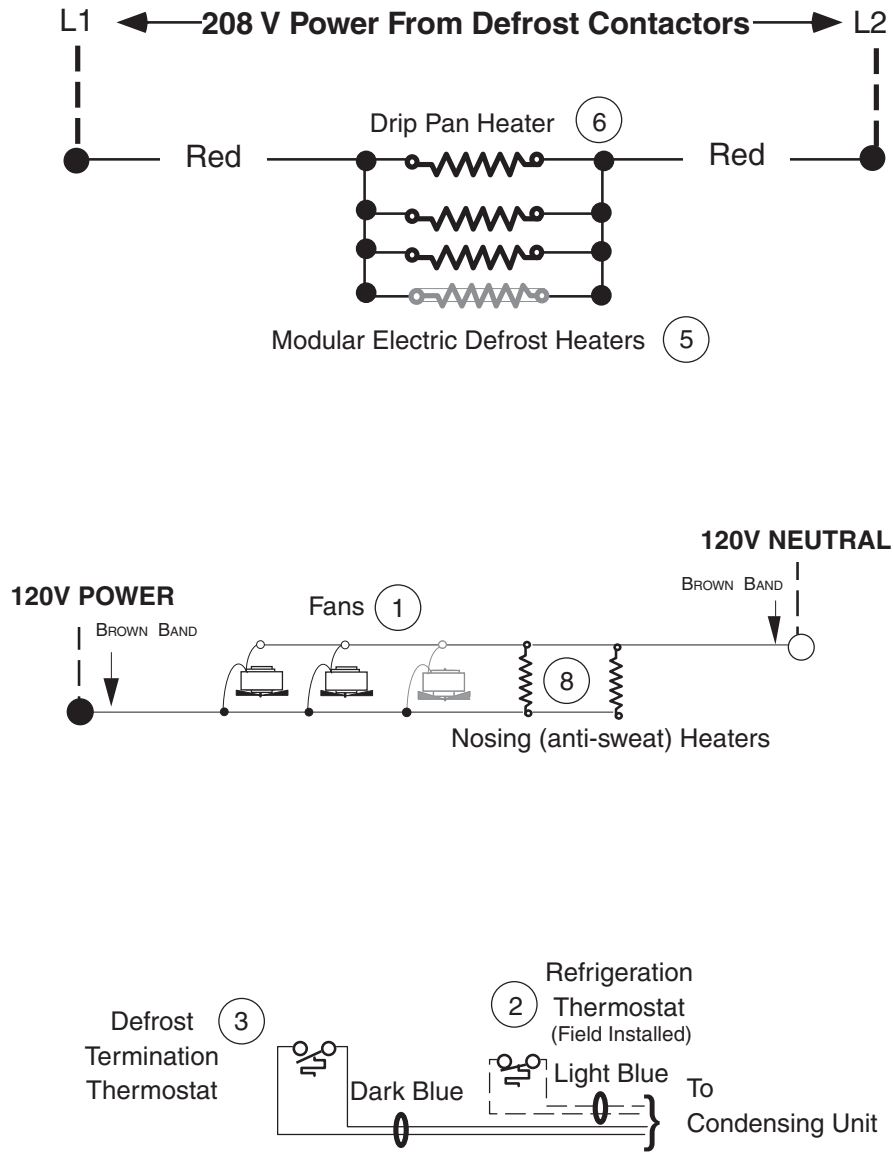
Maximum Over Current Protection 120V	20	20
Maximum Over Current Protection 230V	15	15

Electric Defrost Heaters						
<u>208V</u>	60Hz	Standard	8.0	12.0	1670	2505
230V	50Hz	Export	8.9	13.3	2040	3060

Koolgas Drip Pan Heaters						
120V	60Hz	Standard	2.50	3.75	300	450
<u>230V</u>	50Hz	Export	NA			

Standard Lighting: None

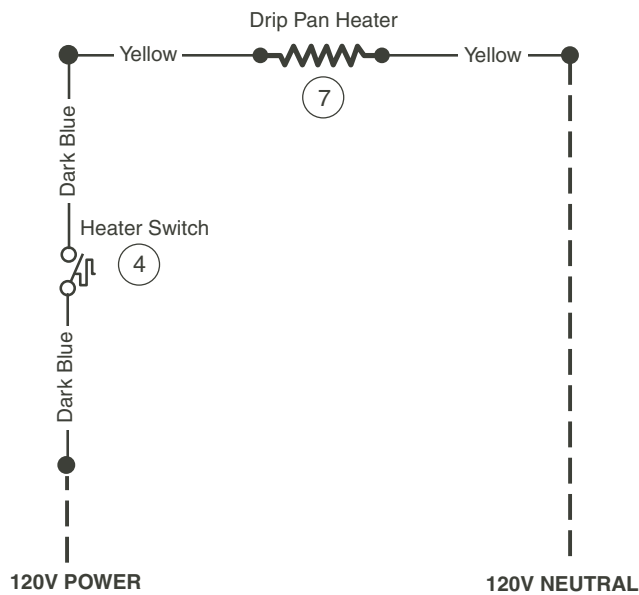
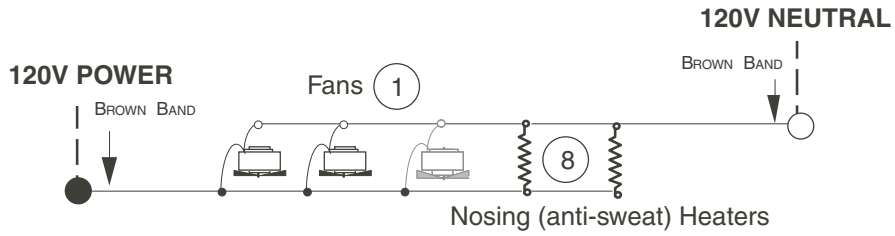
Electric Defrost – Standard



WARNING

All components must have mechanical ground, and the merchandiser must be grounded.
 Circled Numbers = Parts List Item Numbers
 Grayed components in 12 foot models only.

Gas Defrost – Optional



WARNING

All components must have mechanical ground, and the merchandiser must be grounded.
 Circled Numbers = Parts List Item Numbers
 Grayed components in 12 foot models only.