

PARTS LIST

Item	Quantity		Description
	RL/RM/RMF		
	RLN/RMN	RLNI	
1.	2	4	Donut Gasket (Ships with Case)
2.	1	2	Gasket 1 x 1/2 x 180 in.
3.	1	2	Gasket 1/2 x 1/4 x 180 in.
4.	1	1	Partition Assembly
5.	7	14	Flat Washer 5/16
6.	6	12	Cap Screw 5/16-18 x 2 1/2 in.
7.	1	2	Hex Head Lock Nut 5/16-18
8.	2	4	End 'J' Molding
9.	10	20	Shoulder Screw



NOTES: Insulated partitions are used in a line-up between different models or different temperature cases, and are installed as the line-up is set.

Carefully unpack and inspect the insulated partition and components to ensure there is no breakage or damage, and there are no missing parts.

Be sure the first merchandiser has been positioned and leveled according to the installation instruction.

1 Remove items from case as shown in Figure 1 (both sides of islands).

- A. Remove bumpers, rails, packing materials, and splash-guards from both cases.
- B. Remove shelves (if installed).
- C. Remove display racks and pans from ends to be joined.

- D. Remove rear shelf supports.
- E. Remove back panels from both cases by lifting up and out near the bottom. No tools are necessary.

- F. Remove 'J' molding from door frames next to partition.
- G. **RLNI ONLY:** Remove the interior top panels from end that will receive partition.

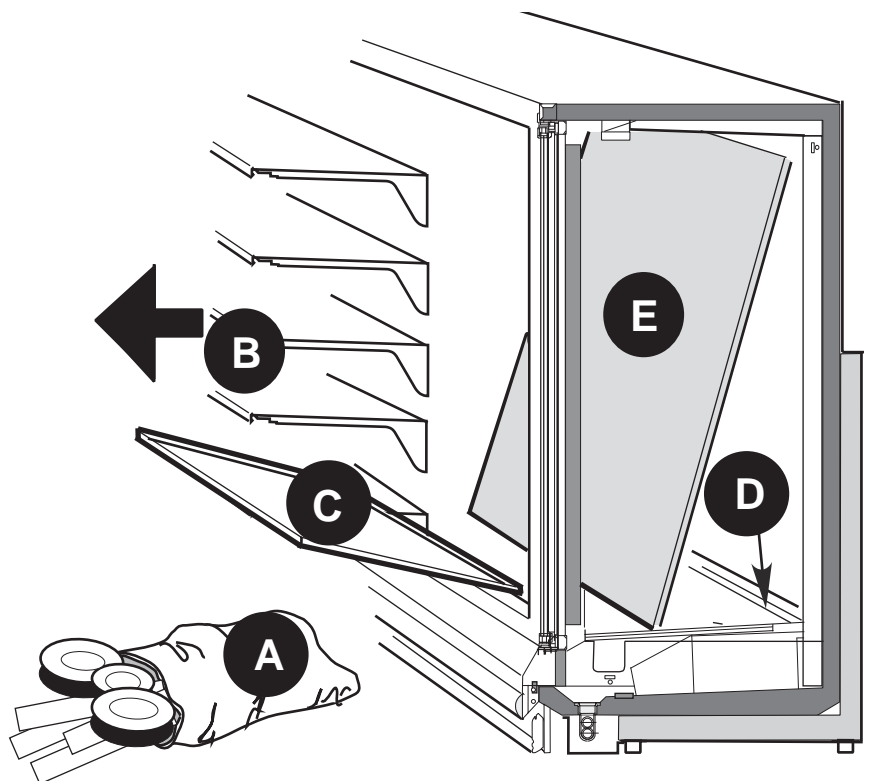


Figure 1. Remove Parts

2 Verify that nut retainers are installed in the right-hand end of the left case in the locations shown in Figure 2.

Remove all alignment pins from cases that will join partition.

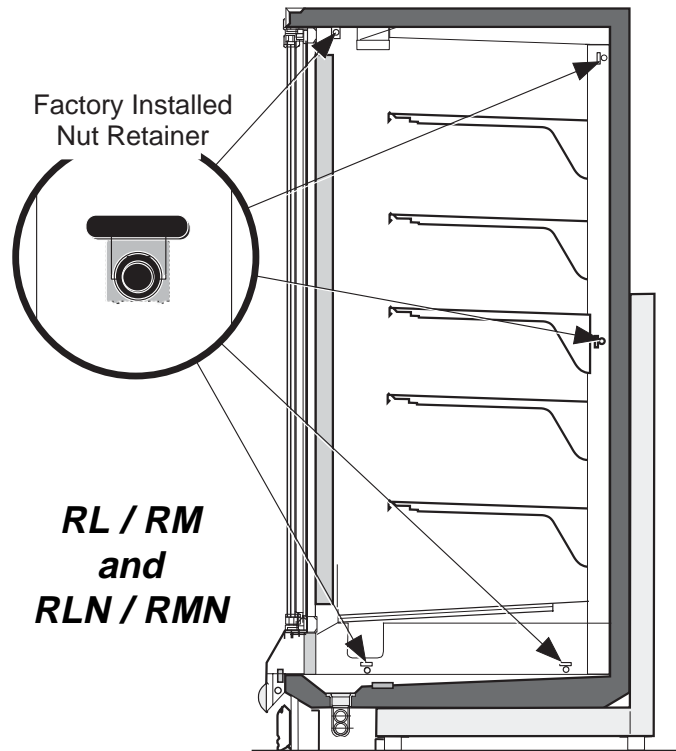
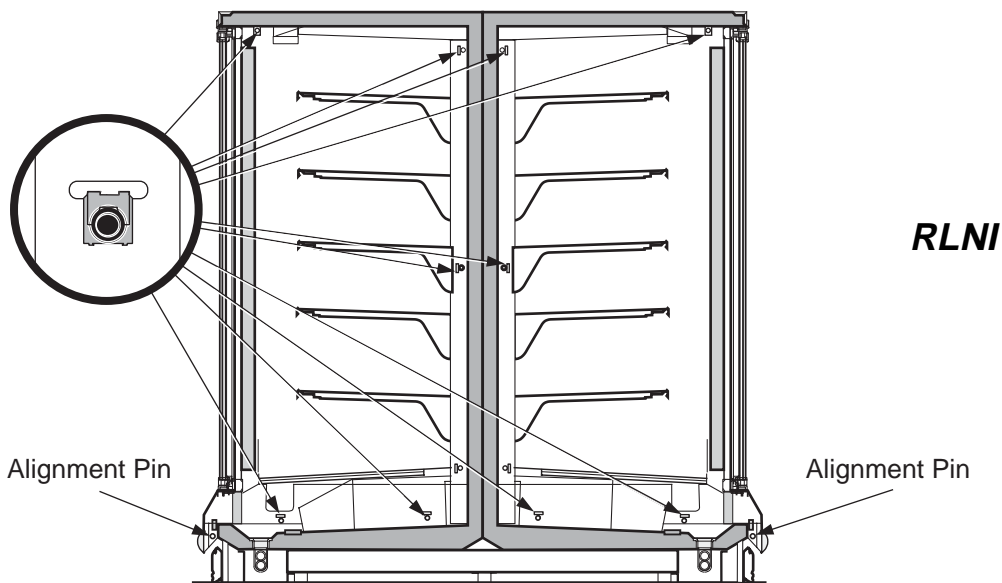
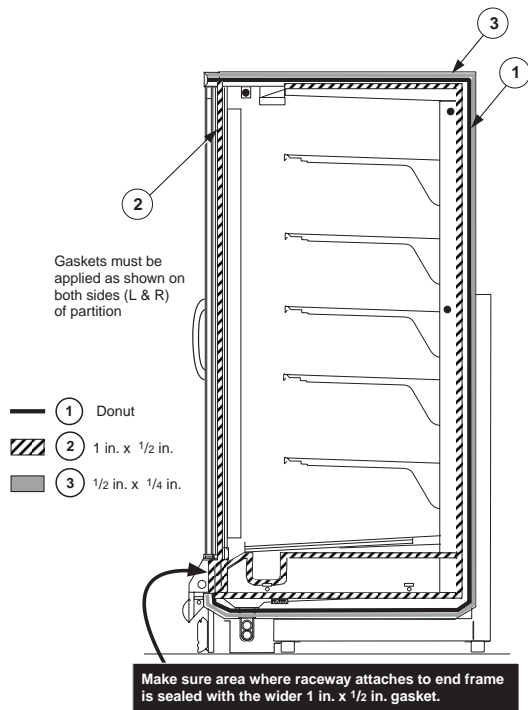


Figure 2. Verify Nut Retainer Installation





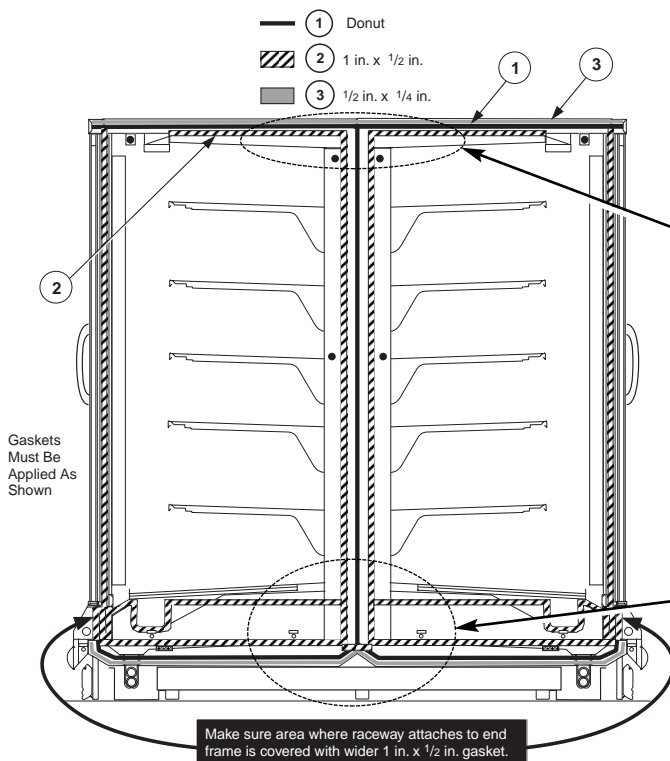
**RL / RM / RMF
and
RLN / RMN**

3 Apply **Donut Gasket — 1** in end frame recessed locations of both cases as shown in Figure 3.

Apply the wider **Foam Tape Gasket — 2** as shown in Figure 3.

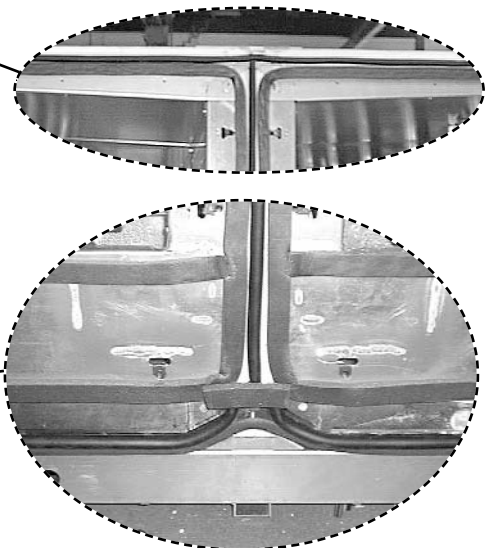
- Lap gaskets at lower corners.
- Check that there are no gaps between gasket and case.
- Do not stretch gasket, especially around corners.
- Do not butt gaskets; always overlap joints.
- Remove paper backing after gasket is applied to keep gasket free of debris.

Figure 3. Apply Gaskets to Both Cases



RLNI

Apply the narrower **Foam Tape Gasket — 3** around the outside of the donut gasket on both cases as shown in Figure 3.



- 4** With the left-hand case leveled in its permanent position, move the joining case into alignment approximately 4 in. (102 mm) from left-hand case.

Slide the **Partition Assembly — 4** between the two cases and raise it to align its joining holes with those in the cases.

Insert long narrow rods (or screwdrivers) through three or more joining holes of the cases and the partition to maintain alignment, then bring the cases firmly together to compress the gaskets against the partition.

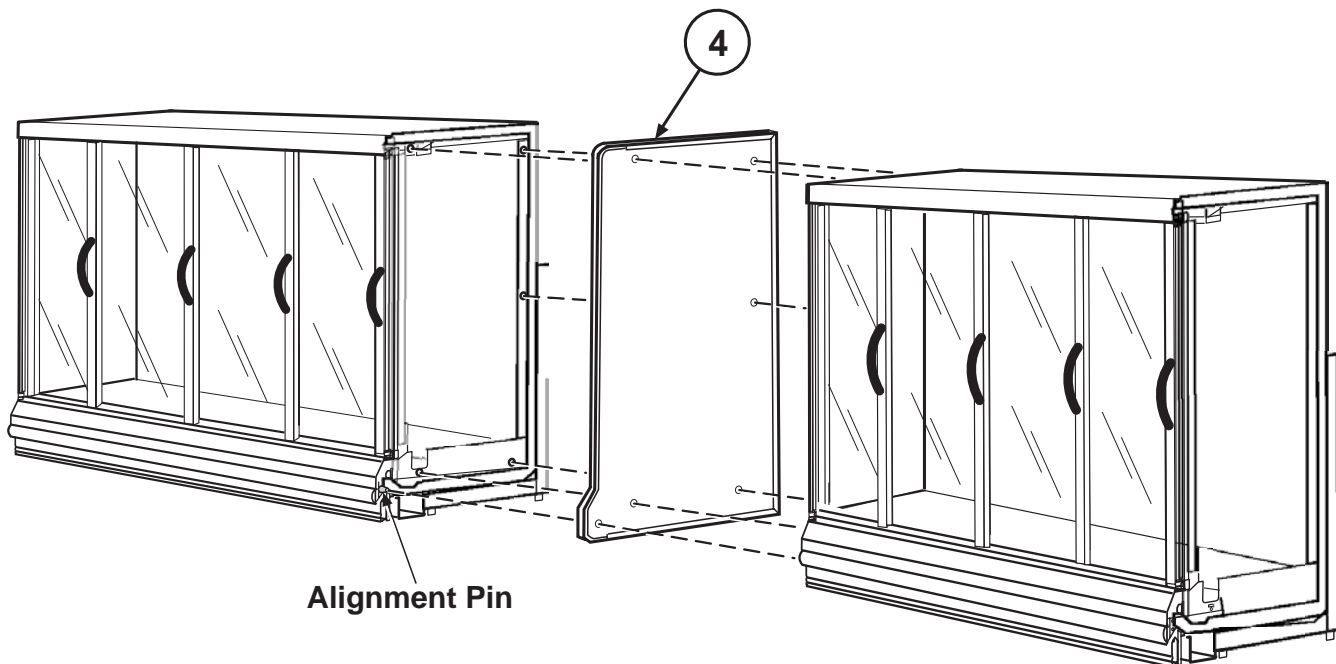
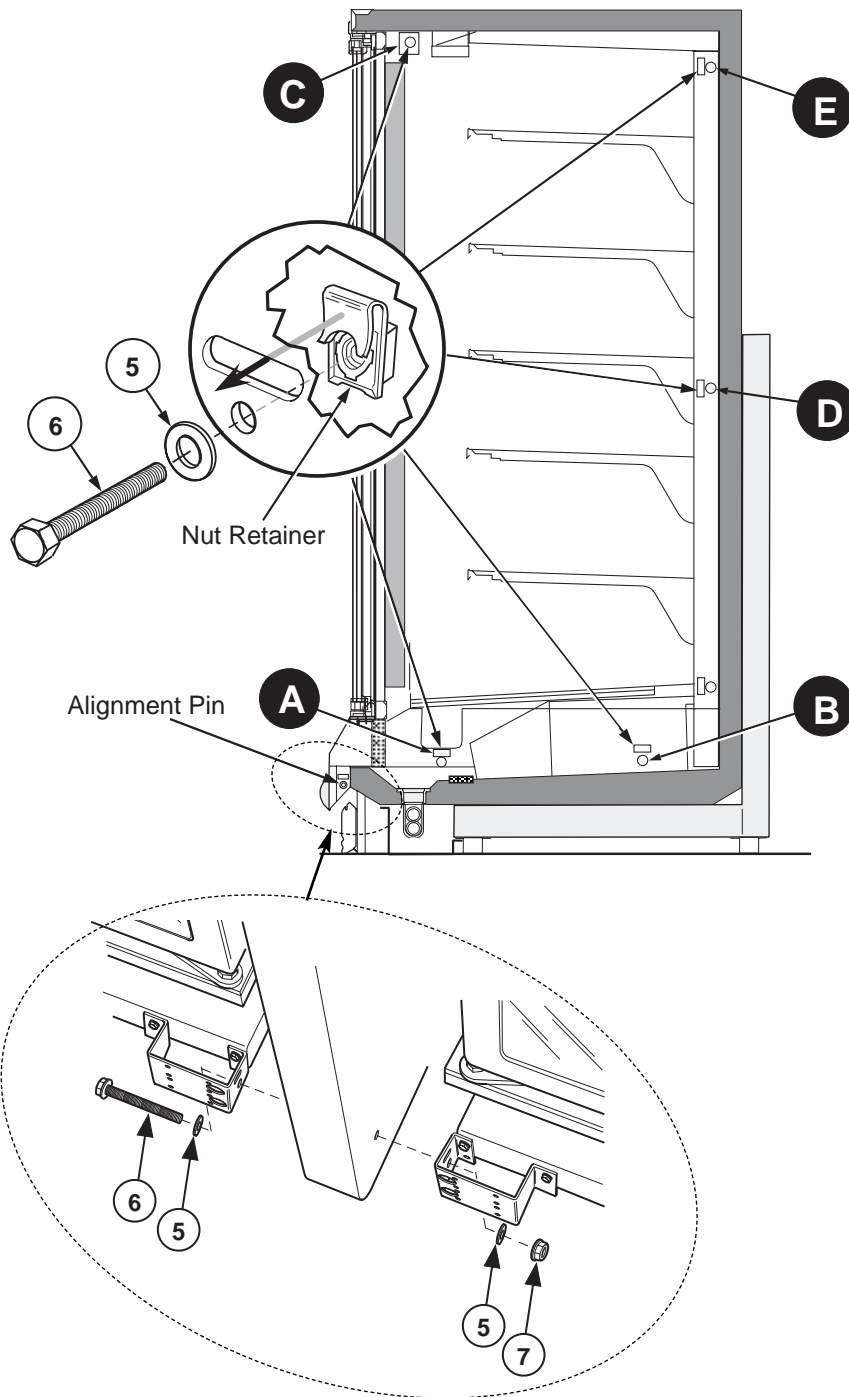


Figure 4. Insert Partition



5 Fasten the cases together through the end frames with **Washers — 5** under the head of **Cap Screws — 6** as shown in Figure 5. Thread screws into nut retainers at the locations shown.

Once all the cap screws and washers are in place, tighten in the order shown in Figure 5.

Do not attempt to draw the cases together with the cap screws. Push the second case against the partition and first case, compressing all gaskets. Overtightening can distort the end frame and cause an incomplete seal which will result in adverse case performance, including leakage.

At lower front location, use **Hex Head Lock Nut — 7** and **Cap Screw — 6** with **Washer — 5** under the head as shown to fasten the partition between the cases.

Figure 5. Install Cap Screws, Washers and Hex Nut

6 Fasten one 'J' Molding — 8 between the partition and the door frame on each side as shown in Figure 6 using Shoulder Screws — 9.

Note that when fastening through the hinge side of the door frame, it may be necessary to release the door retainer so the door opens more than 90 degrees. Refer to manual that shipped with the door.

7 Replace rear shelf support, back panels, display racks and pans, and shelves removed in Step 1.

RLNI ONLY: First, replace the interior top panels removed in Step 1.

Once line-up is complete, install bumpers and rails as shown in Section 1 of the case installation manual. Be sure to install the splashguard brackets before wiring or piping cases.

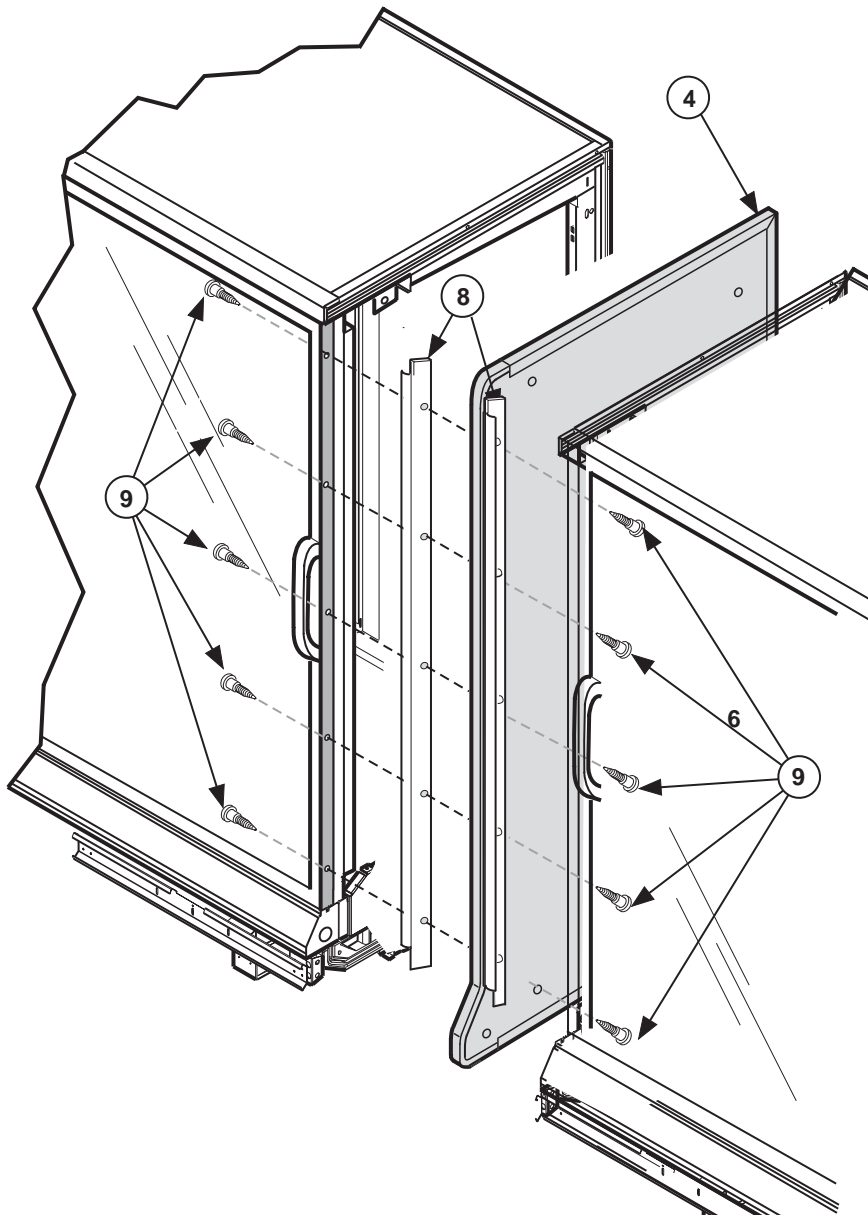


Figure 6. Install 'J' Molding