

# HUSSMANN® IMPACT

## Wide Island Merchandiser Joint Kit Instruction

LW to LW/LWG to LWG/LWGH to LWGH

For Low Temperature Island Merchandisers

### PARTS LIST

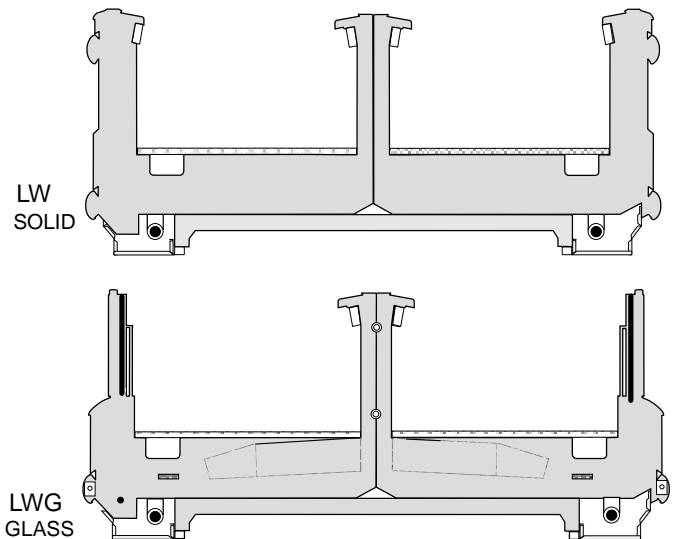
Item No.	Quantity			Description
	LW	LWG	LWGH	
1.	1	1	1	Gasket $1/2 \times 1/2 \times 180$
2.	1	1	1	Donut Gasket
3.	10	10	10	Cap Screw $5/16 - 18 \times 1 1/4$
4.	4	2	2	Cap Screw $5/16 - 18 \times 3/4$
5.	14	12	12	Lock Washer Split Steel $5/16$
6.	14	12	12	Flat Washer $5/16$
7.	14	12	12	Hex Nut $5/16 - 18$
8.	-	2	2	Glass Post Joint Extrusion
9.	-	2	2	Cover — Glass Post End
10.	2	-	-	Nosing Side Joint Trim
11.	1	1	1	Nosing Joint Center Trim
12.	2	2	2	Nosing Joint Trim
13.	12	12	12	Screw Phillips Sheet Metal #8 x $1/4$
14.	2	-	-	Aluminum Rail Trims

KIT  
JOINT

**NOTE:** Be sure merchandisers have been leveled according to the installation instructions. Carefully unpack and inspect the Wide Island Joint Kit, making sure there is no breakage or damage. Be sure factory installed alignment pins are in place.

**Splashguard Brackets  
MUST BE INSTALLED  
Before Piping Case.**

**NOTE:** Refer to the Installation Manual to install splashguard brackets.



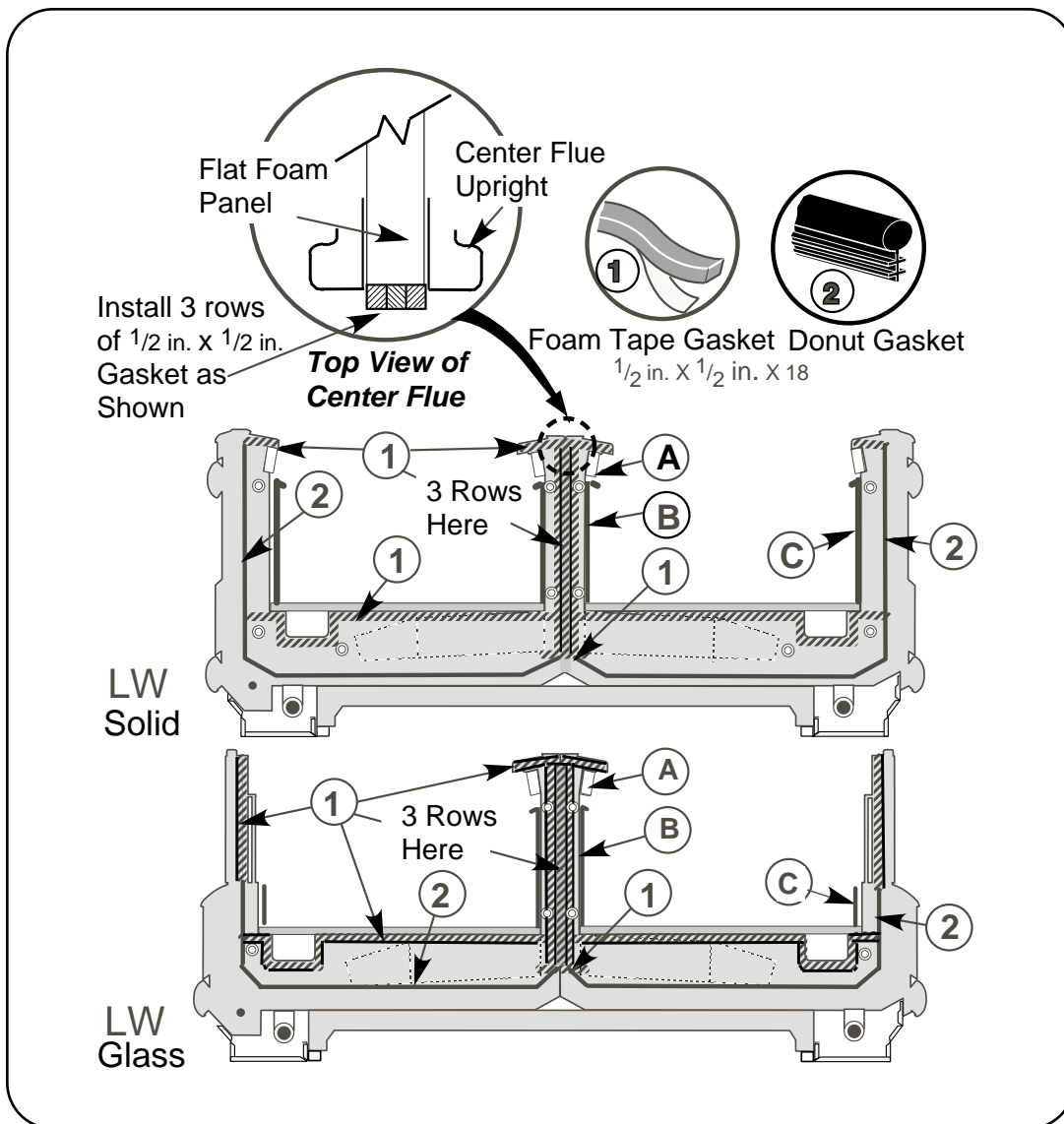
**NOTE: APPLY GASKET TO ONE CASE ONLY.**

**STEPS**

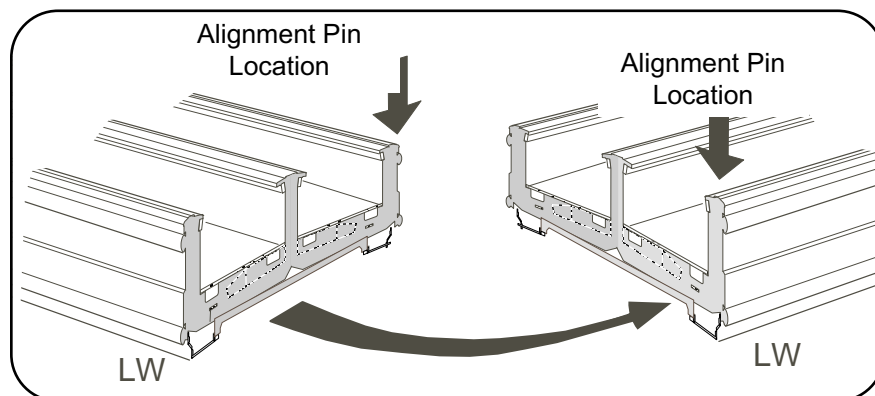
- 1** Apply **Gaskets — 1 and 2** as shown in **Figure 1**.
- Remove paper backing as gasket is applied.
  - Apply 3 rows of Gasket 1 to the center flue foam area only.
  - Lap gaskets at lower corners.

- Check that there are no gaps between gasket and merchandiser, do not stretch gasket, especially around corners.
- Do not butt gaskets; always overlap joints.

- A.** Remove **Honeycomb** at end to be joined by lifting up at bottom and pulling forward.  
**B.** Lift out **Internal Panel**.  
**C.** Remove **Front Shelf Support**.



**Figure 1. Installing Gasket on Solid and Glass Cases**

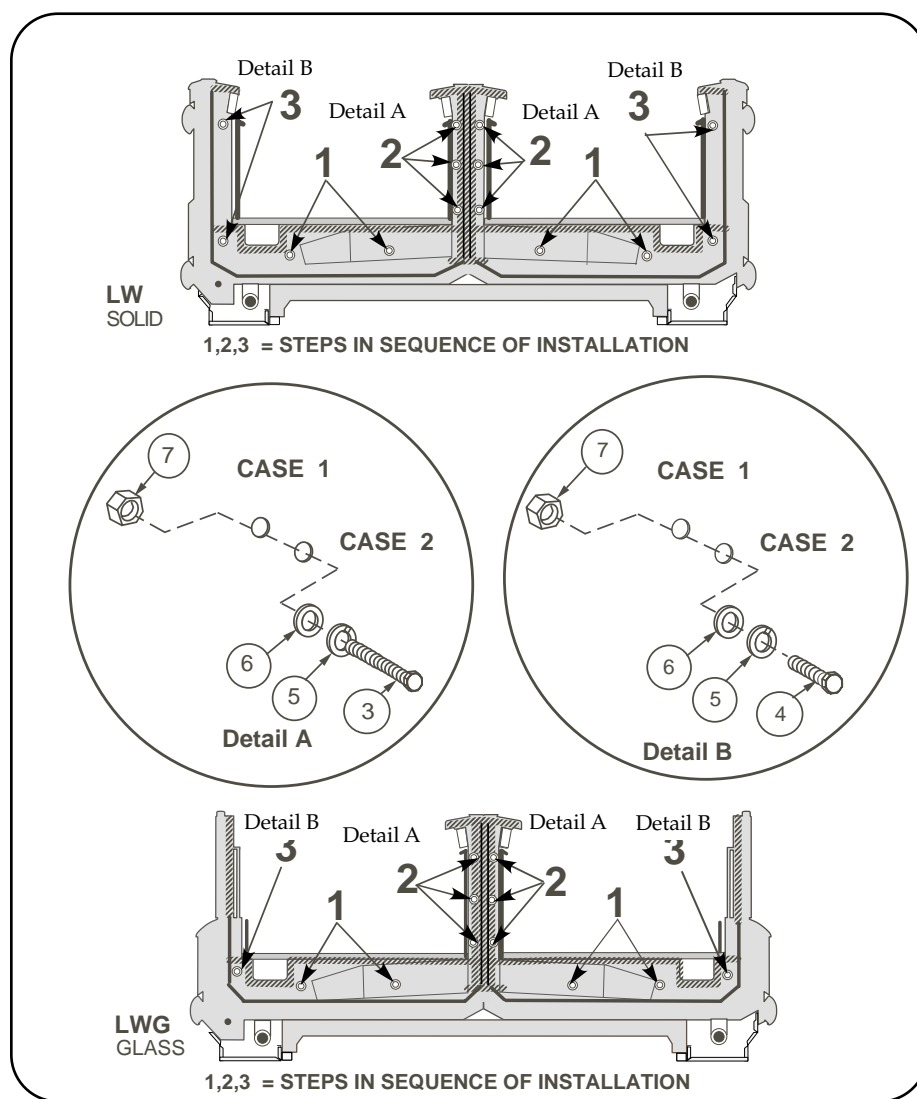


**CAUTION**

Cases should be pushed tightly together guided by alignment pins. **Do Not** pull together by bolts.

- 2** Move Wide Island (LW) against Wide Island (LW) or (LWG) against (LWG) or (LWGH) against (LWGH) mating Alignment Pins together.


**BE SURE AND FOLLOW THE BOLTING SEQUENCE CORRECTLY.**



- 3** Install  $1\frac{1}{4}$  in. Cap Screw — 3, Lock Washer — 5, Flat washer — 6 and Hex Nut — 7 at the bottom locations (1) first, then at the center uprights (2). See drawing and Detail A for installation sequences and locations).

- 4** Install  $\frac{3}{4}$  in. Cap Screw — 4, Lock Washer — 5, Flat washer — 6 and Hex Nut — 7 at the Front and rear uprights (see drawing and Detail B.)

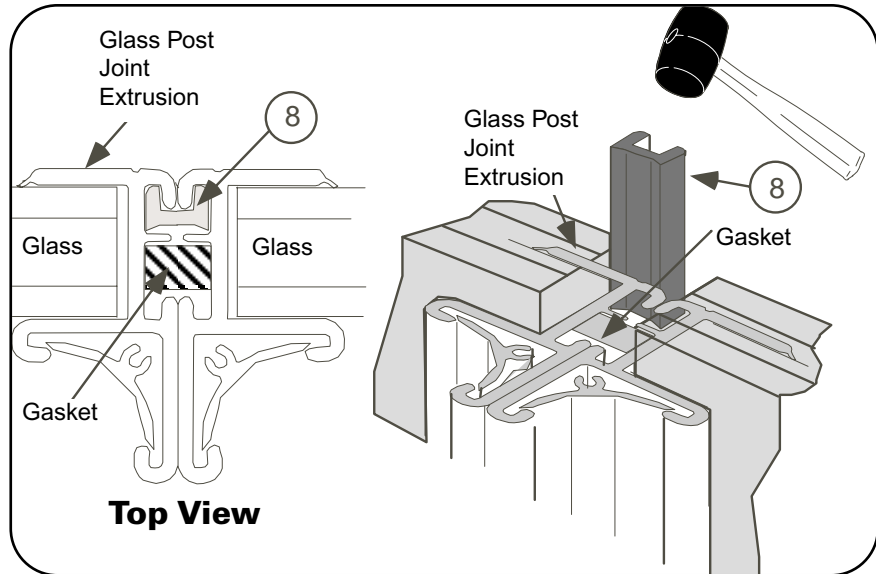
**Figure 2.** Installing Joining Bolts and Connecting Cases

 **CAUTION**

**BE SURE TO USE A RUBBER MALLET WHEN INSTALLING GLASS POST JOINT EXTRUSION.**

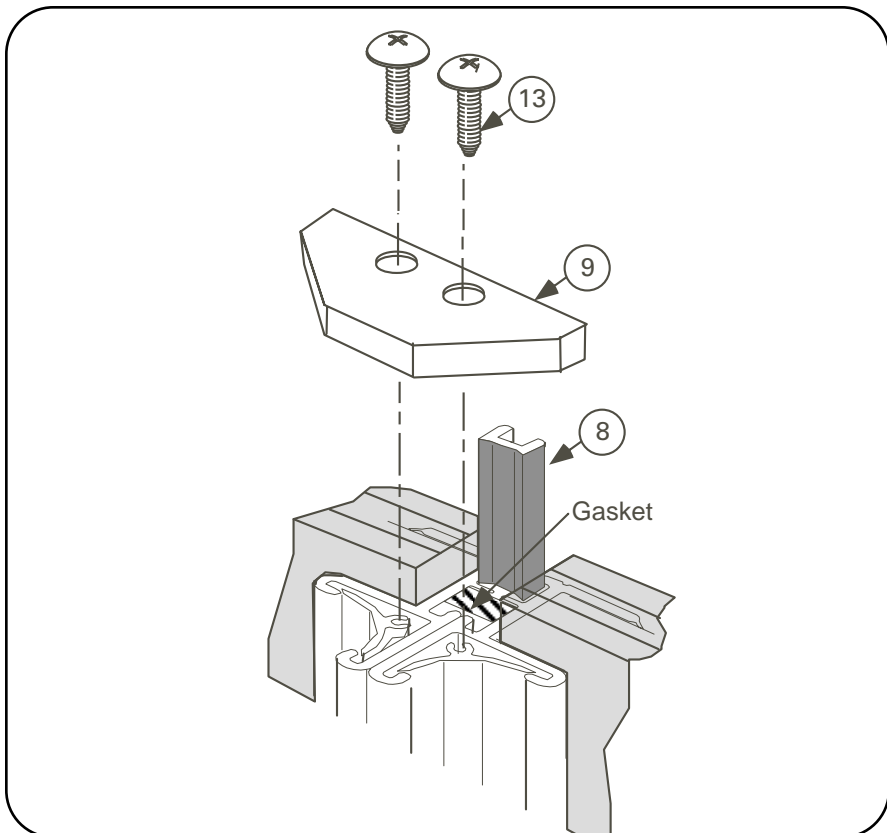
**If Installing Glass Cases.**

- 5** Insert the **Glass Post Joint Extrusion — 8** to align glass at case joints.



**Figure 3.** Installing Glass Post Joint Extrusion

- 6** Install the **Glass Post End Cover — 9**, using **Screws — 13**.



**Figure 4.** Installing Glass Post End Cover

**NOTE:** Refer to the *Installation Instruction* to install the *splashguard brackets*.

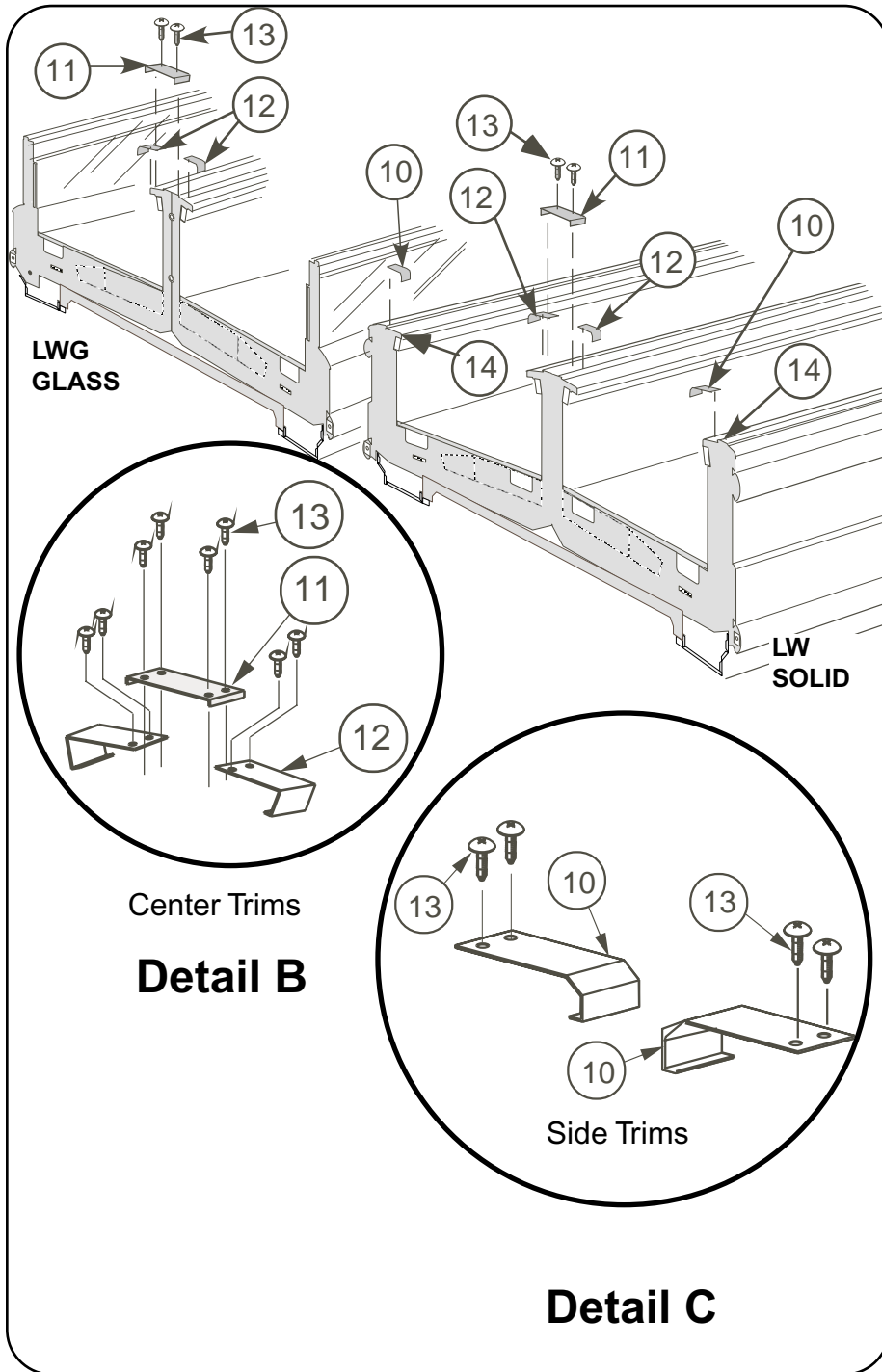


Figure 5. Installing Trims

Begin installing the following Trims by centering them over the case joints.

- 7** Fasten **Nosing Side Joint Trims — 10**, **Nosing Joint Center Trims — 11**, **Nosing Joint Trims — 12 and 14** using **Screws — 13** at the locations shown in **Figure 5**, (see **Details B and C**).

- 8** Install **Plastic Rails**. Make sure to offset joints from case joints, (see **Figure 6**).

- 9** Reverse Step 1A, B and ,C.

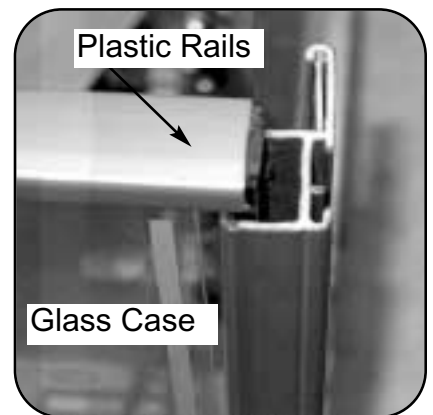


Figure 6.  
Installing Plastic Rails