

We reserve the right to change or revise specifications and product design in connection with any feature of our products. Such changes do not entitle the buyer to corresponding changes, improvements, additions or replacements for equipment previously sold or shipped.

Item	Part #	Description	Wiring Item #	Item	Part #	Description	Wiring Item #
<b>FAN ASSEMBLIES AND THERMOSTATS</b>				<b>LAMPS AND BALLASTS</b>			
A.	<b>12W High Efficiency Standard</b>			C.	Ballast, Electronic		(3)
	End Compartment Fan Assembly		(1)	0135966	1 lamp (BA.4480883)		
	0477655	Fan Motor (MO.4410546)		D.	0039764	Lamp Starter (EP.4481081)	(4)
	0377253	Fan Blade (FB.4780616)		E.	Fluorescent Lamp		(5)
		embossing away from motor			<i>Replace with like fixtures</i>		
B.	0398558	Standard Non-Adjustable Defrost Thermostat (CT.4481088)	(2)				

**NOTE:** Revision E updates Btu note on page 3.



# Engineering Plan Views

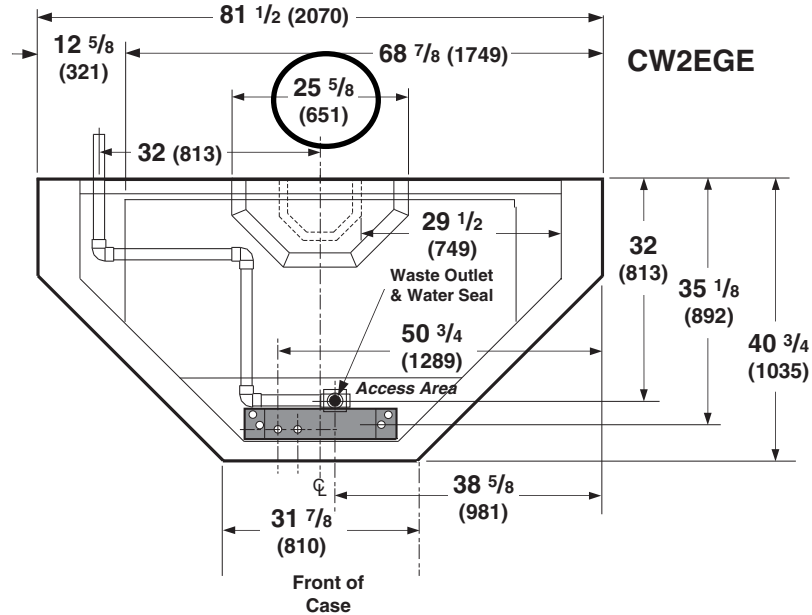
## PHYSICAL DATA




Merchandiser Drip Pipe (in.)	1 1/4
Merchandiser Liquid Line (in.)	1/2
Merchandiser Suction Line (in.)	1 1/8

Dimensions shown as inches and (mm).

## Convertible Island End

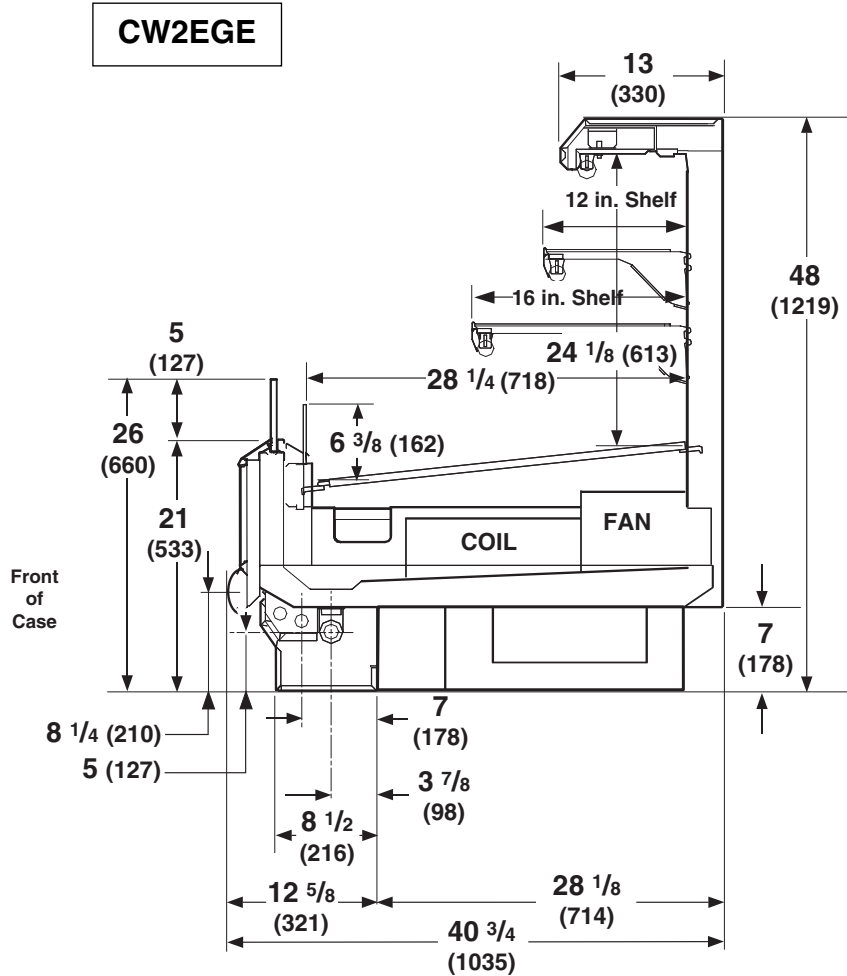
05-2008



		CW2EGE
<b>General</b>		
Maximum O/S dimension of case back to front <i>(includes bumper)</i>		40 3/4 (1035)
Total width of case		81 1/2 (2070)
Width at front of case		31 7/8 (810)
Front of case to O/S edge of front base rail		12 5/8 (321)
Back of case to O/S edge of front base rail		28 1/8 (714)
RH edge of case to O/S edge of LH base rail		68 7/8 (1749)
LH edge of case to O/S edge of LH base rail		12 5/8 (321)
Rear to front of canopy		13 (330)
Width of canopy		25 5/8 (651)
Width of base rail		2 1/8 (54)
Access area between front base rail and splashguard		8 1/8 (206)
<b>Electrical Service</b>  <i>(Electrical Field Wiring connection point)</i>		
Center of Electrical service to O/S edge of front base rail		7 (178)
RH edge of case to center of knockout		50 3/4 (1289)
Length of electrical raceway		22 (559)
<b>Waste Outlet</b> 		
RH edge of case to the center of waste outlet		38 5/8 (981)
Center of waste outlet to outside of front base rail		3 7/8 (98)
<b>Water Seal</b> 		
Center of case to center of pipe connection		32 (813)
Schedule 40 PVC drip pipe		1 1/4 (32)
<i>Water seal outlet must clear front skid rail.</i>		

**Impact CW2EGE**  
**Convertible Island End**

Dimensions shown as inches and (mm).



**REFRIGERATION DATA**

**Note:** This data is based on store temperature and humidity that does not exceed 75°F and 55% R.H.

	<b>CW2EGE</b>
<b>Discharge Air (°F)</b>	28
<b>Evaporator (°F)</b>	21
<b>Unit Sizing (°F)</b>	19

<i>Btu/hr/case*</i>	<b>CW2EGE</b>
<b>Parallel</b>	4600
<b>Conventional</b>	5100

\*Energy efficient motors are standard on the CW2EGE.

**DEFROST DATA**

	<b>CW2EGE</b>
<b>Frequency (hr)</b>	6
<b>Defrost Water (lb/case/day)</b>	8

(± 15% based on a case configuration and product loading).

<i>OFFTIME</i>	<b>CW2EGE</b>
<b>Temp Term (°F)</b>	48°
<b>Failsafe (minutes)</b>	45

*ELECTRIC OR GAS* Not Recommended

**Standard Defrost Thermostat**  
Close on rise: close 48°F — open 33°F

**CONVENTIONAL CONTROLS**

<b>Low Pressure Backup Control</b>	<b>CW2EGE</b>
<b>CI/CO (Temp °F)*</b>	17°/7°

**Indoor Unit Only, Pressure Defrost Termination (Temp °F)\*\*** 48°

\*\*Use a Temperature Pressure Chart to determine PSIG conversions.

**PHYSICAL DATA**

<b>Estimated Charge (lb)***</b>	<b>CW2EGE</b>
	1.7

\*\*\*This is an average for all refrigerant types. Actual refrigerant charge may vary by approximately half a pound.

**NSF Certification**

This merchandiser model is manufactured to meet ANSI/NSF (National Sanitation Foundation) Standard #7 requirements for construction, materials & cleanability.

<b>Impact CW2EGE</b> <b>Convertible Island End</b>
---

**Electrical Data**

			<b>CW2EGE</b>	
			<b>2</b>	
<b>Number of Fans—12W</b>				
			<b>Amperes</b>	<b>Watts</b>
<b>Evaporator Fan</b>				
120V	60Hz	Standard	0.60	50
120V	50Hz	Standard		
230V	60Hz	Export	NA	
230V	50Hz	Export	NA	
120V	60Hz	Energy Efficient	(See Note 1 below)	
230V	60Hz	Energy Efficient		
<b>Cycling Anti-sweat Heaters</b>			None	
<b>Minimum Circuit Ampacity</b>				
120V	60Hz	Standard	0.80	
120V	50Hz	Standard		
230V	60Hz	Export	NA	
230V	50Hz	Export	NA	
120V	60Hz	Energy Efficient	(See Note 1 below)	
230V	60Hz	Energy Efficient		
<b>Maximum Over Current Protection 120V</b>			<b>20</b>	
Maximum Over Current Protection 230V			15	
<b>208V Electric Defrost Heaters</b>			None	
<b>Standard Lighting (T-8 Fluorescent)</b>				
1 Row Canopy			0.80	40
<b>Optional Lighting (T-8 Fluorescent)</b>				
Additional 1 Row Canopy				
Additional 2 Row Canopy			(See Note 2 below)	
<b>Optional Shelf Lighting (T-8 Fluorescent)</b>				
1 Rows of Shelves			0.80	40
2 Rows of Shelves			1.60	80

**Note 1:** All CW2 end compartments are equipped with energy efficient fan motors as standard.

**Note 2:** CW2 end compartments are not available with 2 row canopy lighting due to space constraints.

Impact **CW2EGE**  
Convertible Island End

**Product Data**

<i>Recommended Usable Cube</i> <sup>1</sup> (Cu Ft/Case)	18.47 ft <sup>3</sup> /case (1.72 m <sup>3</sup> /case)
<i>ARI Total Display Area</i> <sup>2</sup> (Sq Ft/Case)	18.3 ft <sup>2</sup> /case (5.58 m <sup>2</sup> /case)
<i>Shelf Area</i> <sup>3</sup> (Sq Ft/Case)	30.56 ft <sup>2</sup> /case (9.31 m <sup>2</sup> /case)

- <sup>1</sup> ARI Refrigerated Volume less shelving and other unusable space: Refrigerated Volume/Unit of Length, ft<sup>3</sup>/ft [m<sup>3</sup>/m]  
<sup>2</sup> Computed using ARI 1200 standard methodology: Total Display Area, ft<sup>2</sup> [m<sup>2</sup>]/Unit of Length, ft [m]  
<sup>3</sup> Shelf surface area is composed of bottom deck plus standard shelf complement, as shown in the Hussmann *Product Reference Guide*. The standard shelf complement for this model is (1) row of 12-inch shelf and (1) row of 16-inch shelf.

**ESTIMATED SHIPPING WEIGHT**<sup>4</sup>

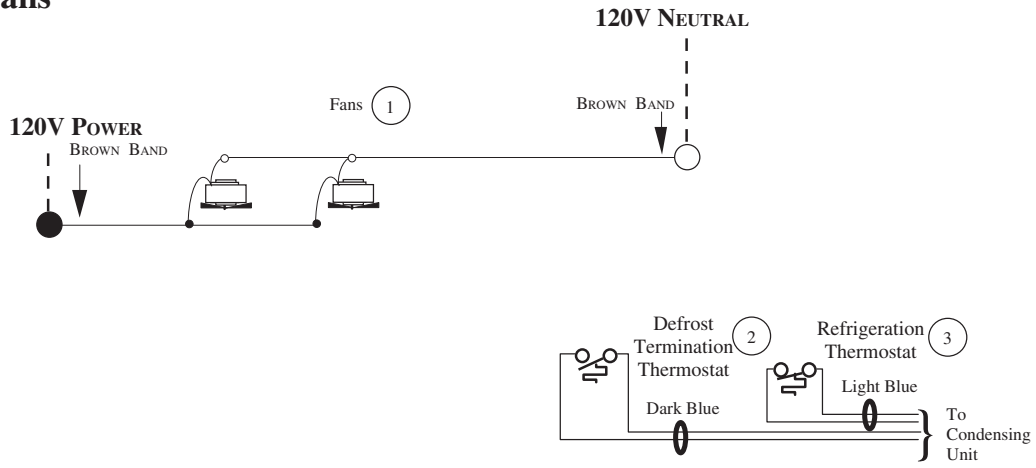
**CW2EGE End Case**

700 (318)

<sup>4</sup> Actual weights will vary according to optional kits included.

# Fan Wiring Offtime Defrost

## 2 Fans



### WARNING

All components must have mechanical ground, and the merchandiser must be grounded.

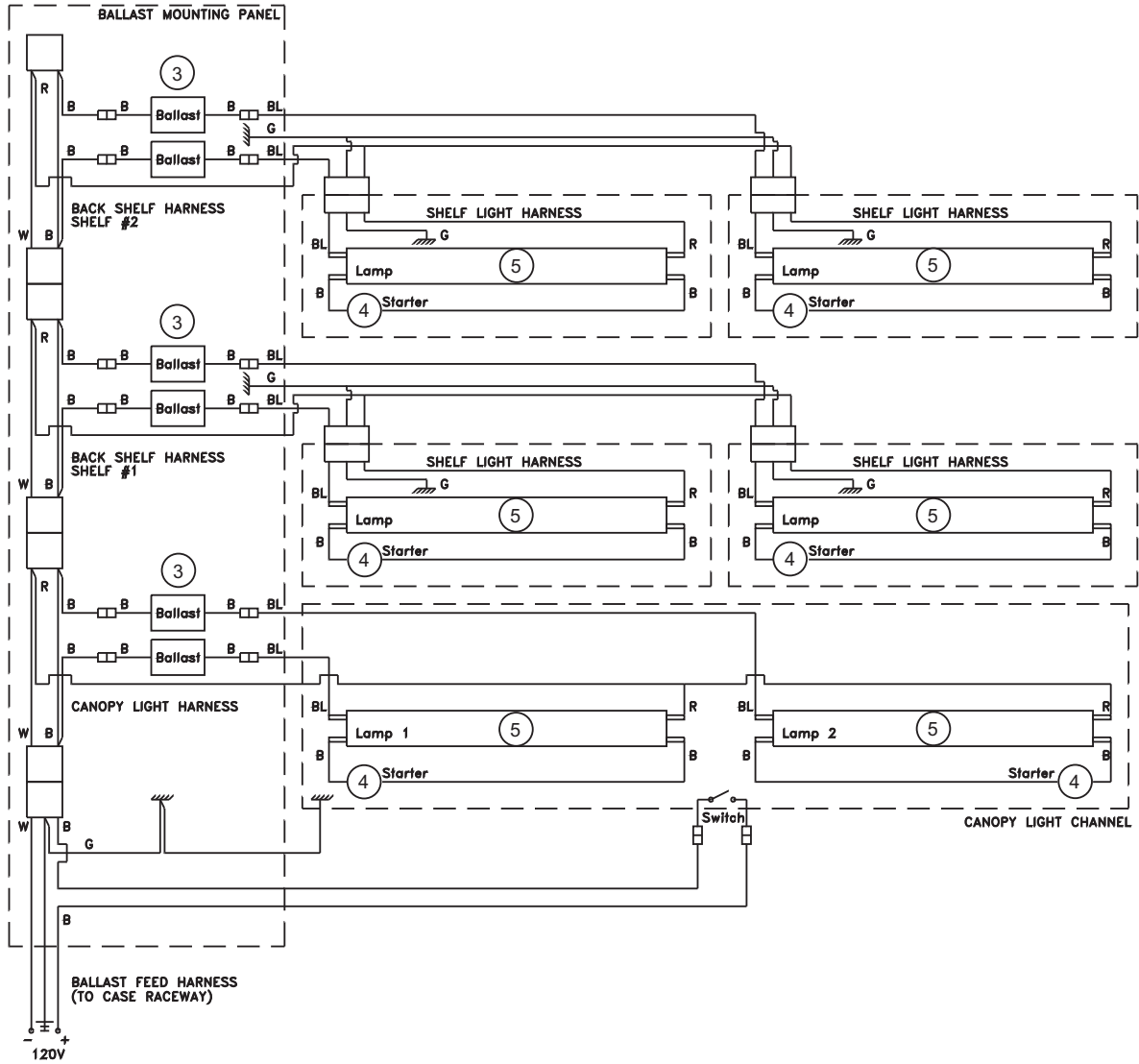
CIRCLED NUMBERS = PARTS LIST ITEM NUMBERS

R = Red Y = Yellow G = Green BL = Blue B = Black W = White

● = 120V POWER ○ = 120V NEUTRAL ≡ = Field GROUND ≡≡ = Case GROUND

## CW2EGE END COMPARTMENT LIGHTING SCHEMATIC

(Standard canopy lighting and  
optional shelf lighting are shown)



### WARNING

All components must have mechanical ground, and the merchandiser must be grounded.

**CIRCLED NUMBERS = PARTS LIST ITEM NUMBERS**

R = Red   Y = Yellow   G = Green   BL = Blue   B = Black   W = White

● = 120V POWER   ○ = 120V NEUTRAL