

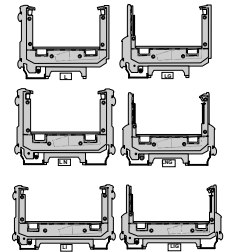
For Low Temperature Merchandisers

#### PARTS LIST

Item No.	L		LG		LN		LNG		LI		LIG		Description
	L	LG	LN	LNG	LI	LIG							
1.	1	1	1	1	1	1			1	1			Gasket 1/2 x 1/2 x 120
2.	1	1	1	1	1	1			1	1			Donut Gasket
3.	6	5	6	4	6	4			6	4			Cap Screw 5/16-18 x 1
4.	6	5	6	4	6	4			6	4			Lock Washer Split Steel 5/16
5.	6	5	6	4	6	4			6	4			Flat Washer 5/16
6.	6	5	6	4	6	4			6	4			Hex Nut 5/16 - 18
7.	-	1	-	2	-	2			-	2			Glass Post Joint Extrusion
8.	-	1	-	1	-	1			-	1			Glass Post End Cover
9.	4	4	4	4	4	4			4	4			Screw Phillips Sheet Metal 8 x 1/2
10.	1	-	2	1	2	1			2	1			Nosing Joint Trim
11.	1	1	-	-	-	-			-	-			Joint Trim

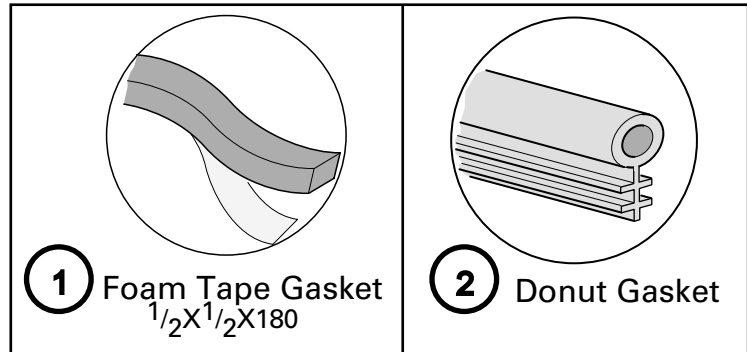
**Splashguard Brackets  
MUST BE INSTALLED  
Before Piping Case.**

**NOTE:** Refer to the  
Installation Manual to  
install splashguard



**NOTE:** Be sure merchandisers have been leveled according to the installation instructions. Carefully unpack and inspect the Wall/Island Joint Kit, making sure there is no breakage or damage. Be sure factory-installed nut retainers and alignment pins are in place.

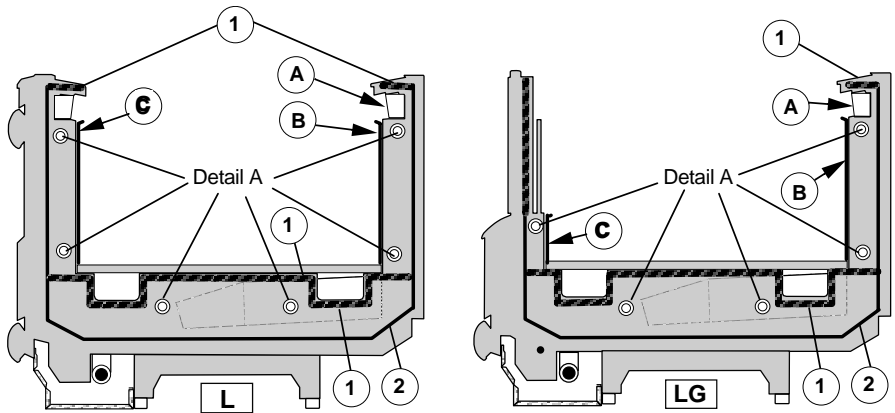
See Figures 1, 2 and 3 for gasket, hole and fastener locations for all models.



#### STEPS

- Apply Gaskets — 1 and 2 as shown in Figure 1.
    - Remove paper backing as gasket is applied.
    - Lap gaskets at lower corners.
    - Check that there are no gaps between gasket and merchandiser.
    - Do not stretch gasket, especially around corners.
    - Do not butt gaskets; always overlap joints.
- A.** Remove Honeycomb at end to be joined by lifting up at bottom and pulling forward.
- B.** Lift out Rear Panel.
- C.** Remove Front Panel.

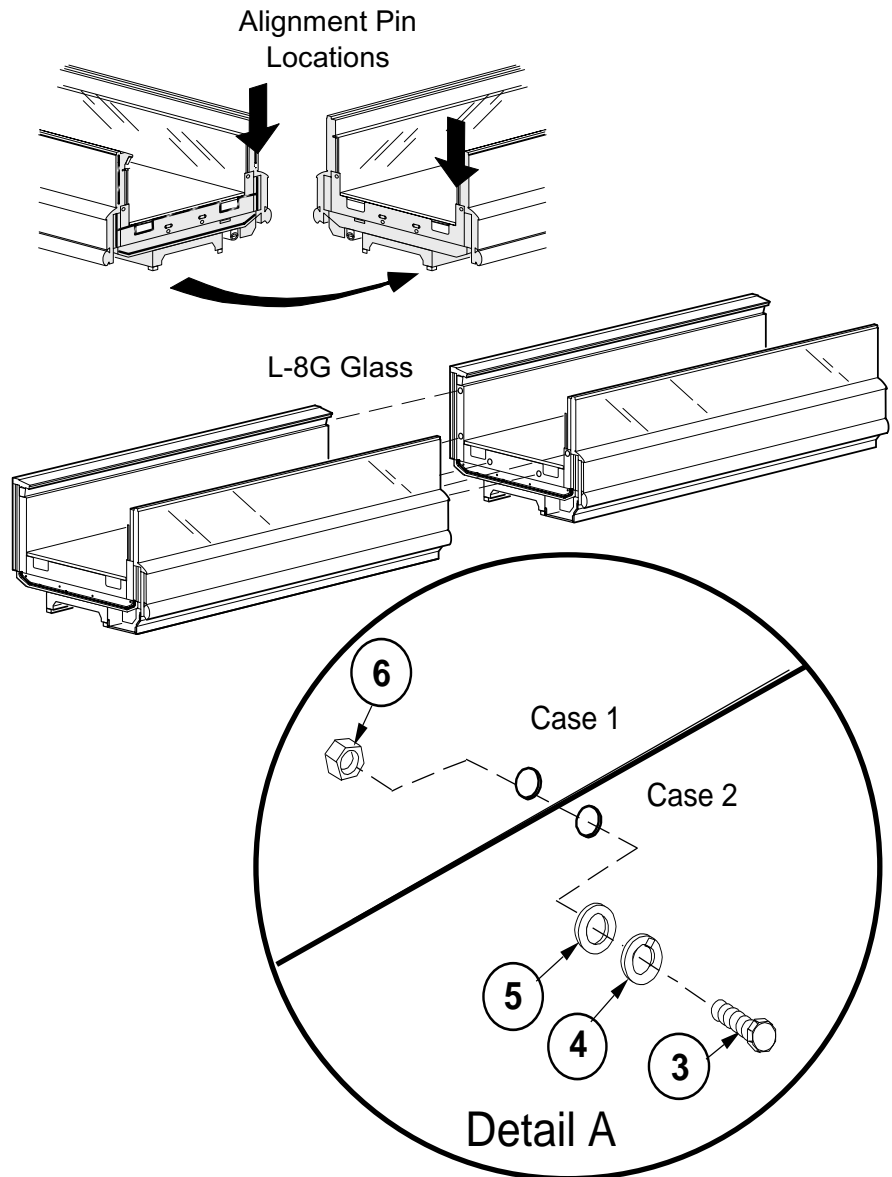
**NOTE: APPLY GASKET TO ONE CASE ONLY.**



**Figure 1. Installing Gasket for Solid and Glass**

**CAUTION**

Cases should be pushed tightly together, guided by alignment pins. **DO NOT PULL together by bolts.**

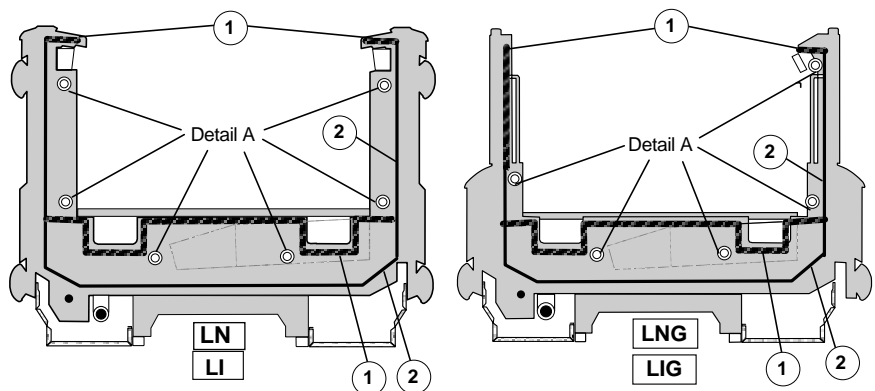


**2** Move the cases to be joined together (see Figure 2).

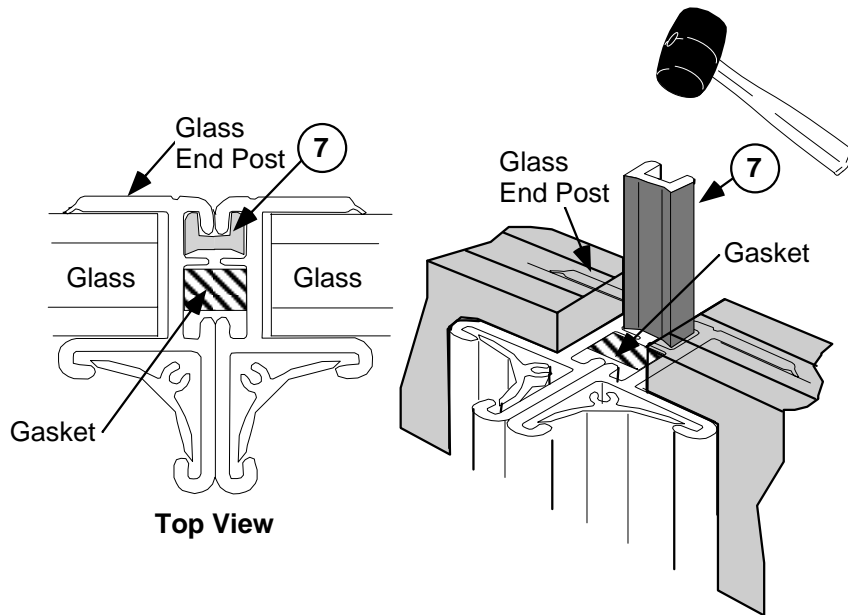
**BE SURE TO TIGHTEN THE BOTTOM BOLTS FIRST.**

**3** Install **1 inch Cap Screw — 3**, **Lock Washer — 4**, **Flat washer — 5** and **Hex Nut — 6** at the bottom locations first. (see Figures 1, 2 and Detail A).

**Figure 2.** Aligning and Joining Cases



**Figure 3.** Installing Joining Bolts and Joining Cases

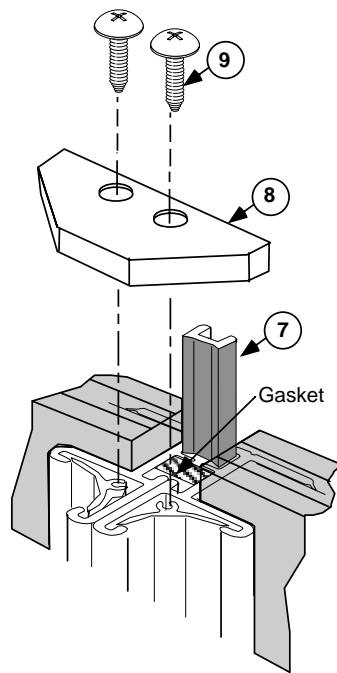


IF INSTALLING GLASS CASES

	<b>CAUTION</b>
<b>BE SURE TO USE A RUBBER Mallet WHEN INSTALLING GLASS POST JOINT EXTRUSION.</b>	

- 4** Insert the **Glass Post Joint Extrusion — 7** to align glass at case joints.

**Figure 4. Installing Glass Post Joint Extrusion**

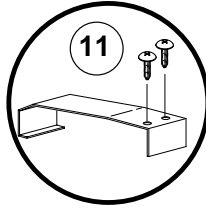
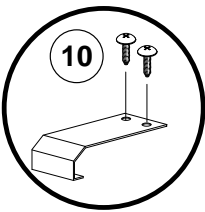
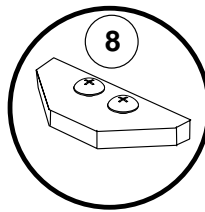


- 5** Install the **Glass Post End Cover — 8**, using **Screws — 9**.

**Figure 5. Installing Glass Post End Cover**

Review the chart and illustrations in Figures 6 and 7. Begin installing the Trims by centering them over the case joints.

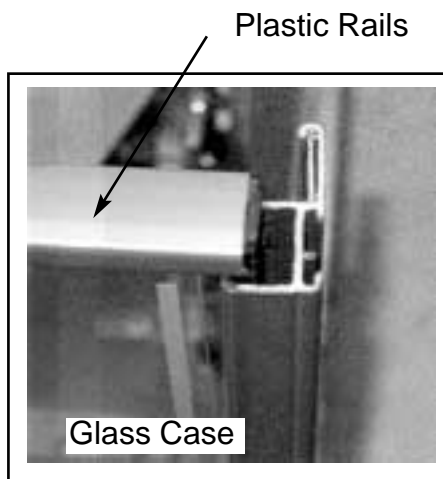
**6** Fasten the **Nosing Joint Trims — 10** and **Joint Trim s— 11**, using **Screws — 9** at the locations shown in Figure 7.

			
L	1	1	—
LG	1	—	1
LN	—	2	—
LNG	—	1	1
LI	—	2	—
LIG	—	1	1

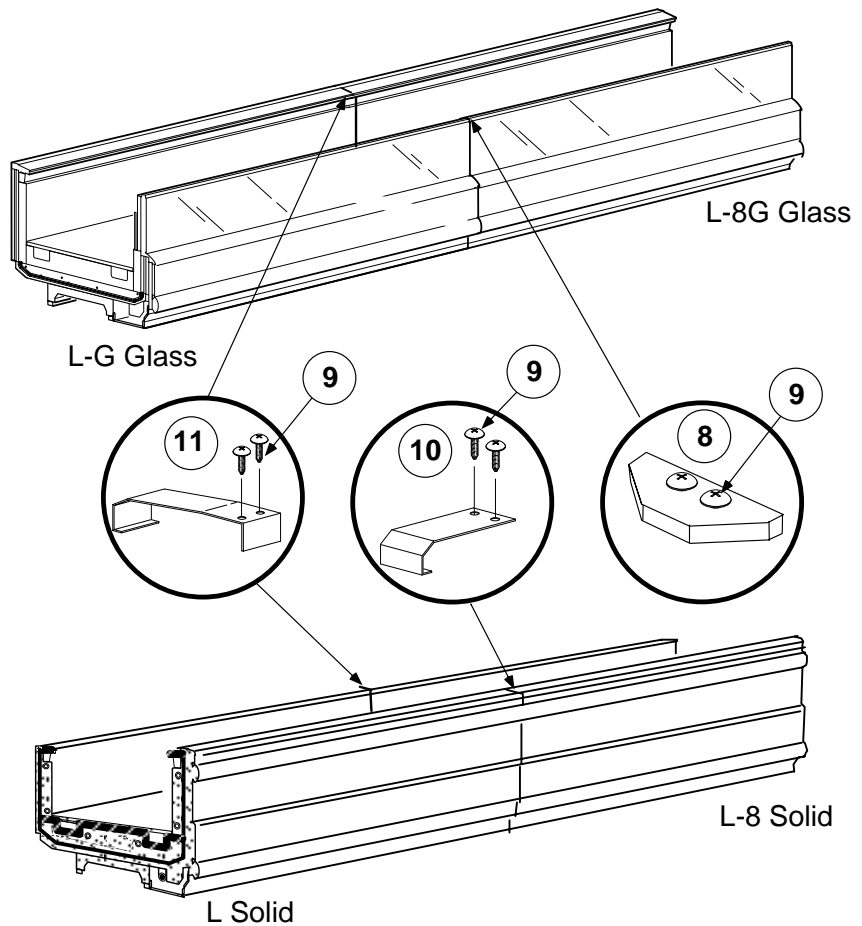
**Figure 6.** Identifying Cases with Joint Trim

**7** Install **Plastic Rails**. Make sure to offset Joints from case joints, (see Figure 8).

**8** Reverse Step 1- A, B and C and reinstall the Front Panel, Rear Panels and Honeycomb.



**Figure 8.** Installing Plastic Rails



**Figure 7.** Locating Trims