

Item	Part #	Description	Wiring Item #	Item	Part #	Description	Wiring Item #
FAN ASSEMBLIES AND THERMOSTATS				LAMPS AND BALLASTS			
A.	12W End Compartment Fan Assembly 0477655 0377253	Fan Motor, Standard (MO.4410546) Fan Blade (FB.4780616) embossing away from motor	(1)	C.	0135966	Ballast, Electronic 1 lamp (BA.4480883)	(3)
B.	0398558	Standard Non-Adjustable Defrost Thermostat (CT.4481088)	(2)	D.	0039764	Lamp Starter (EP.4481081)	(4)
				E.		Fluorescent Lamp <i>Replace with like fixtures</i>	(5)

NOTE: Revision C updates fan wattage on Page 1 and adds product data on Page 5.

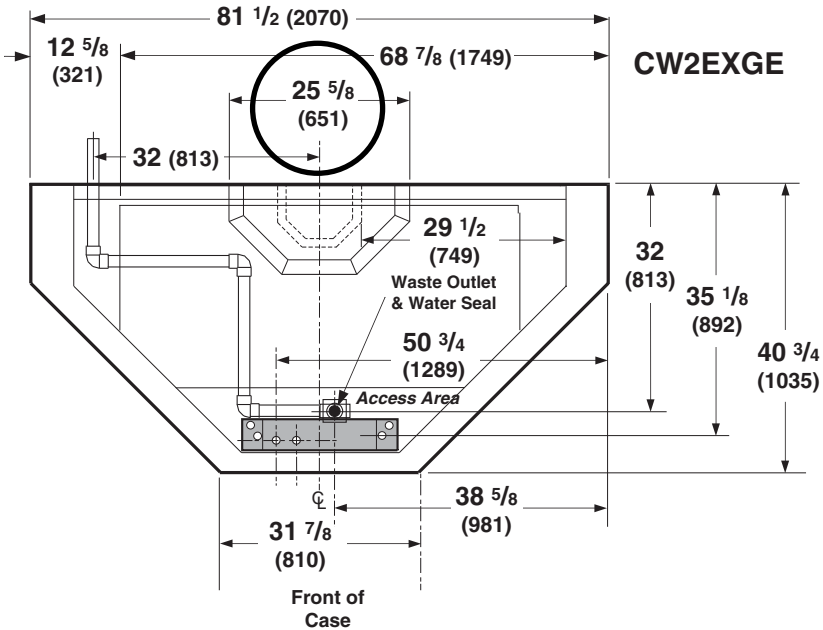
Engineering Plan Views



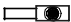
PHYSICAL DATA	
Merchandiser Drip Pipe (in.)	1 1/4
Merchandiser Liquid Line (in.)	3/8
Merchandiser Suction Line (in.)	7/8

Dimensions shown as inches and (mm).

Wide Island End

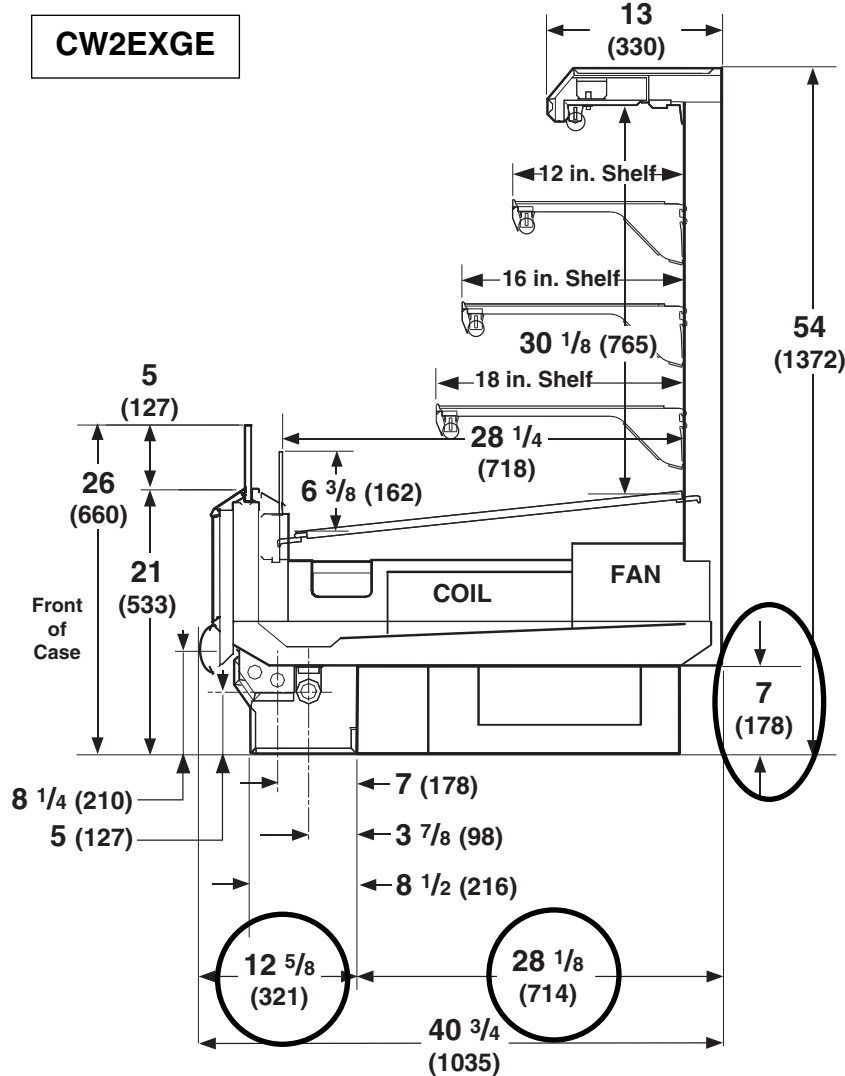
05-2003



General		CW2-EXGE
Maximum O/S dimension of case back to front (includes bumper)		40 3/4 (1035)
Total width of case		81 1/2 (2070)
Width at front of case		31 7/8 (810)
O/S edge of front splashguard to O/S edge of front base rail		8 1/2 (216)
Front of case to O/S edge of front base rail		<u>12 5/8 (321)</u>
Back of case to O/S edge of front base rail		<u>28 1/8 (714)</u>
RH edge of case to O/S edge of LH base rail		68 7/8 (1749)
LH edge of case to O/S edge of LH base rail		12 5/8 (321)
Rear to front of canopy		13 (330)
Width of canopy		<u>25 5/8 (651)</u>
Width of base rail		2 1/8 (54)
Access area between front base rail and splashguard		8 1/8 (206)
Electrical Service  (Electrical Field Wiring connection point)		
Center of Electrical service to O/S edge of front base rail		7 (178)
RH edge of case to center of knockout		50 3/4 (1289)
Length of electrical raceway		22 (559)
Waste Outlet 		
RH edge of case to the center of waste outlet		38 5/8 (981)
Center of waste outlet to outside of front base rail		3 7/8 (98)
Water Seal 		
Center of case to center of pipe connection		32 (813)
Schedule 40 PVC drip pipe		1 1/4 (32)
<i>Water seal outlet must clear front skid rail.</i>		

**Impact CW2EXGE
Convertible Island End**

Dimensions shown as inches and (mm).



REFRIGERATION DATA

Note: This data is based on store temperature and humidity that does not exceed 75°F and 55% R.H.

	CW2EXGE
Discharge Air (°F)	28
Evaporator (°F)	21
Unit Sizing (°F)	19
Btu/hr/case	CW2EXGE
Parallel	4800
Conventional	5300

DEFROST DATA

	CW2EXGE
Frequency (hr)	6
Defrost Water (lb/ft/day)	8
(± 15% based on case configuration and product loading).	

OFFTIME	CW2EXGE
Temp Term (°F)	48°
Failsafe (minutes)	45

ELECTRIC OR GAS Not Recommended

Standard Defrost Thermostat
Close on rise: close 48°F — open 33°F

CONVENTIONAL CONTROLS

Low Pressure Backup Control	CW2EXGE
CI/CO (Temp °F)**	17°/7°

Indoor Unit Only, Pressure Defrost Termination (Temp °F) 48°**

**Use a Temperature Pressure Chart to determine PSIG conversions.

PHYSICAL DATA

Estimated Charge (lb)***	CW2EXGE
	1.7

***This is an average for all refrigerant types. Actual refrigerant charge may vary by approximately half a pound.

Length Added to Lineup by:
Each End/Partition (in.) 1 1/2

NSF Certification

This merchandiser model is manufactured to meet ANSI/NSF (National Sanitation Foundation) Standard #7 requirements for construction, materials & cleanability.

Impact CW2EXGE Convertible Island End
--

Electrical Data

				CW2-EXGE	
Number of Fans—9W				2	
				Amperes	Watts
Evaporator Fan					
120V	60Hz	Standard		0.76	50
120V	50Hz	Standard			
230V	60Hz	Export		NA	
230V	50Hz	Export		NA	
120V	60Hz	Energy Efficient		(See Note 1 below)	
230V	60Hz	Energy Efficient			
Cycling Anti-sweat Heaters				None	
Minimum Circuit Ampacity					
120V	60Hz	Standard		0.96	
120V	50Hz	Standard			
230V	60Hz	Export		NA	
230V	50Hz	Export		NA	
120V	60Hz	Energy Efficient		(See Note 1 below)	
230V	60Hz	Energy Efficient			
Maximum Over Current Protection 120V				20	
Maximum Over Current Protection 230V				15	
208V Electric Defrost Heaters				None	
Standard Lighting (T-8 Fluorescent)					
1 Row Canopy				0.80	40
Optional Lighting (T-8 Fluorescent)					
Additional 1 Row Canopy					
Additional 2 Row Canopy				(See Note 2 below)	
Optional Shelf Lighting (T-8 Fluorescent)					
1 Rows of Shelves				0.80	40
2 Rows of Shelves				1.60	80
3 Rows of Shelves				2.40	120

Note 1: All CW2 end compartments are equipped with energy efficient fan motors as standard.

Note 2: CW2 end compartments are not available with 2 row canopy lighting due to space constraints.

Product Data

<i>Recommended Usable Cube</i> ¹ (Cu Ft/Case)	23.77 ft ³ /case (2.21 m ³ /case)
<i>ARI Total Display Area</i> ² (Sq Ft/Case)	22.20 ft ² /case (6.77 m ² /case)
<i>Shelf Area</i> ³ (Sq Ft/Case)	40.06 ft ² /case (12.21 m ² /case)

¹ ARI Refrigerated Volume less shelving and other unusable space: Refrigerated Volume/Unit of Length, ft³/ft [m³/m]

² Computed using ARI 1200 standard methodology: Total Display Area, ft² [m²]/Unit of Length, ft [m]

³ Shelf surface area is composed of bottom deck plus standard shelf complement, as shown in the Hussmann *Product Reference Guide*. The standard shelf complement for this model is (1) row of 12-inch shelf and (1) row of 16-inch shelf.

ESTIMATED SHIPPING WEIGHT ⁴

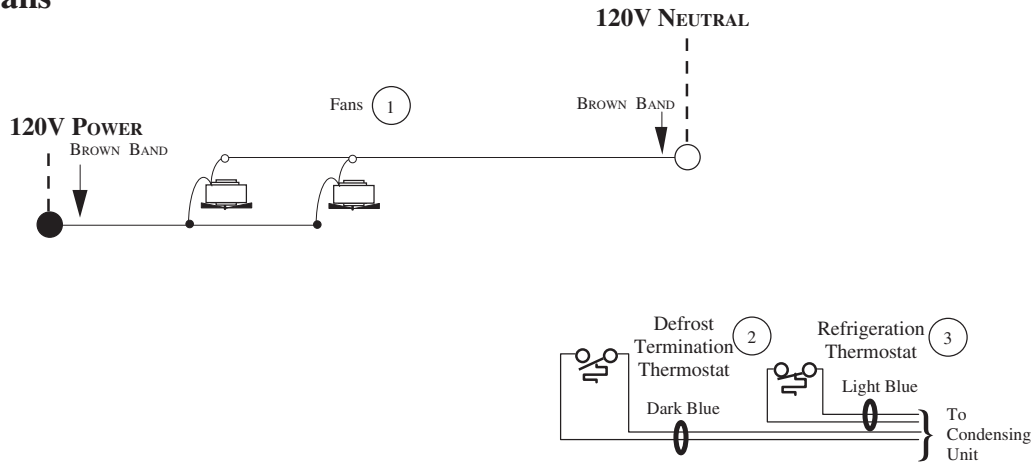
CW2EXGE End Case

800 (363)

⁴ Actual weights will vary according to optional kits included.

Fan Wiring Offtime Defrost

2 Fans



WARNING

All components must have mechanical ground, and the merchandiser must be grounded.

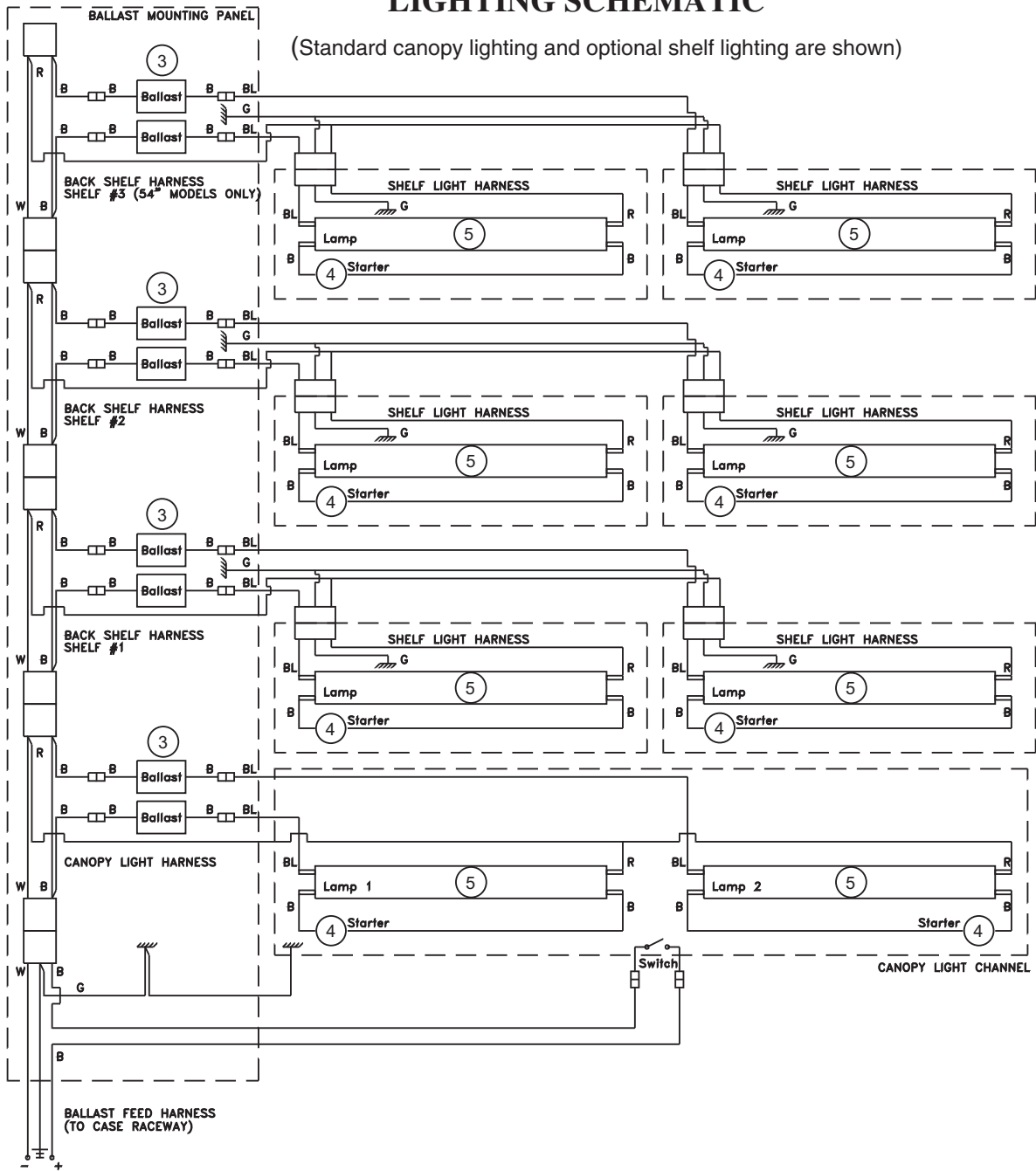
CIRCLED NUMBERS = PARTS LIST ITEM NUMBERS

R = Red Y = Yellow G = Green BL = Blue B = Black W = White

● = 120V POWER ○ = 120V NEUTRAL ≡ = Field GROUND ≡≡ = Case GROUND

CW2EXGE END COMPARTMENT LIGHTING SCHEMATIC

(Standard canopy lighting and optional shelf lighting are shown)



WARNING

All components must have mechanical ground, and the merchandiser must be grounded.

CIRCLED NUMBERS = PARTS LIST ITEM NUMBERS

R = Red Y = Yellow G = Green BL = Blue B = Black W = White

● = 120V POWER ○ = 120V NEUTRAL