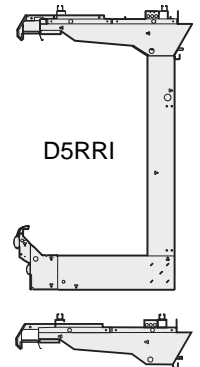


PARTS LIST

Item	Quantity		Description
	D5RRI	D5RRIS	
1.	7	5	Nut Retainer $\frac{5}{16}$ -18 (LEFT ENDS ONLY)
2.	1	1	Gasket $\frac{1}{2}$ x 1 x 180 (4572 mm)
3.	1	1	Gasket $\frac{1}{2}$ x $1\frac{5}{8}$ x 180 (4572 mm)
4.	1	1	End Assembly
5.	7	5	Flat Washer $\frac{5}{16}$
6.	7	5	Lock Washer $\frac{5}{16}$
7.	7	5	Cap Screw $\frac{5}{16}$ -18 x $2\frac{1}{2}$ (64 mm)
8.	7	7	Plug Button
9.	1	1	Silicone Sealer
10.	1	1	Top Rail Starter (for non-metal top rail)
11.	2	2	Top Rail Trim (for metal top rail only)
12.	4	4	Screw 8 - 18 x $\frac{1}{2}$ SS Torx HD (for metal top rail only)
Optional End Protector			
13.	1	1	End Protector
14.	10	10	Phillips Head Sheet Metal Screw 8 x $\frac{1}{2}$ (13 mm)
Optional End Bumper			
15.	1	1	End Bumper Retainer
16.	6	6	Hex Head Sheet Metal Screw 10-16 x $\frac{3}{4}$ (19 mm)
17.	2	2	Bumper End Cap
18.	1	1	End Bumper



D5RRI



D5RRIS

Note: Nut retainers are factory installed in the left end, and alignment pins are factory installed in the right end of each merchandiser.

NOTES:

- Be sure factory-installed nut retainers and alignment pins are in place.
- Install optional shelf kits after end has been joined.

- 1 Remove front air grille and honeycomb from the appropriate end as shown in Figure 1.

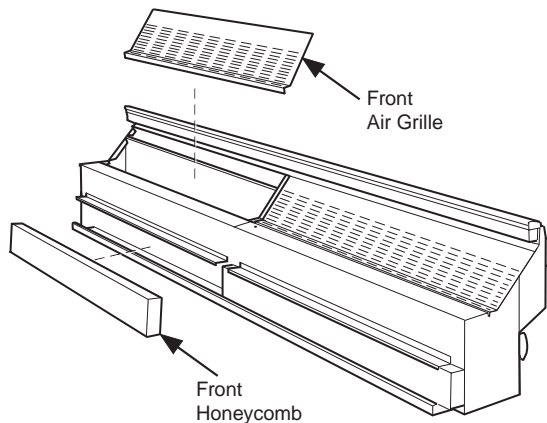


Figure 1. Remove Air Grille and Honeycomb

P/N 0435046
February, 2003

2 LEFT ENDS ONLY:
 Install **Nut Retainers – 1** in the left-hand end frame as shown. **Remove alignment pins.**

RIGHT ENDS ONLY:
 Verify that factory installed nut retainers are installed in the right-hand end frame as shown in Figure 2.

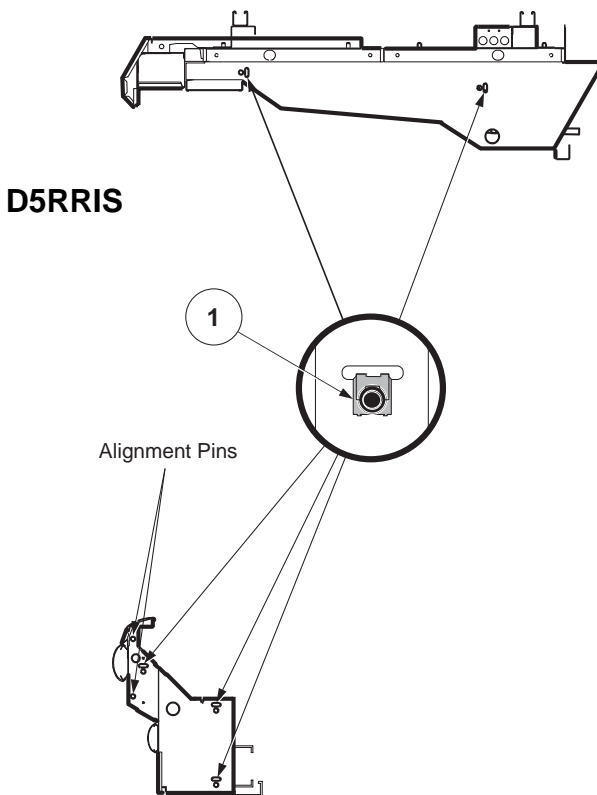
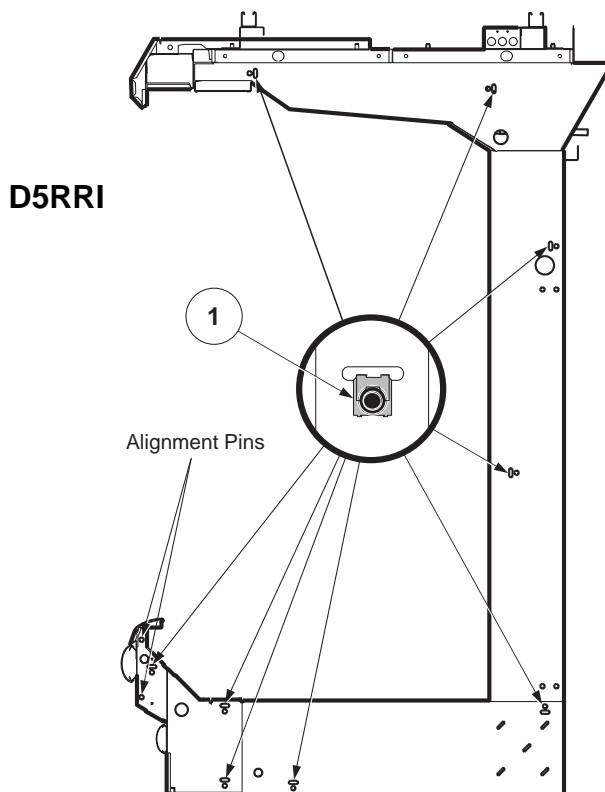
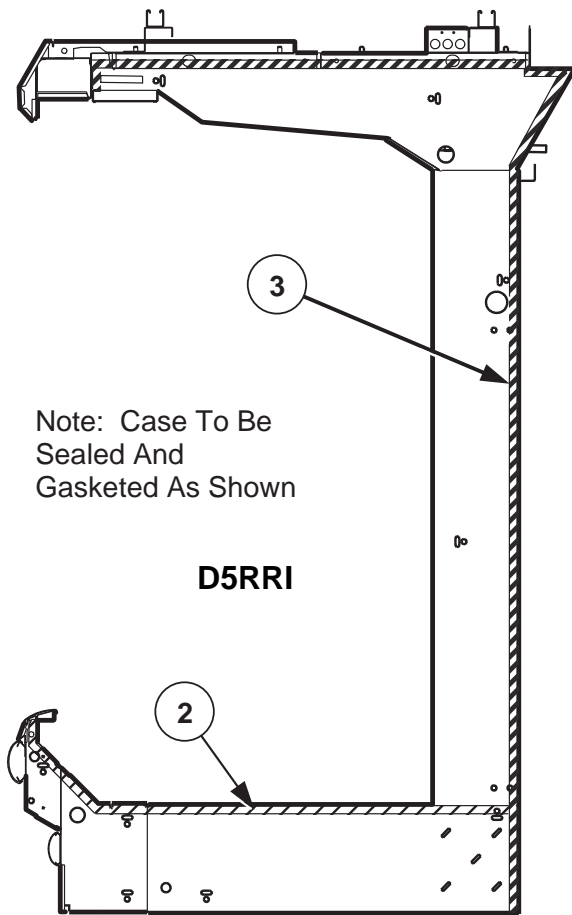
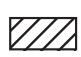



Figure 2. Verify Nut Retainer and Alignment Pin Installation

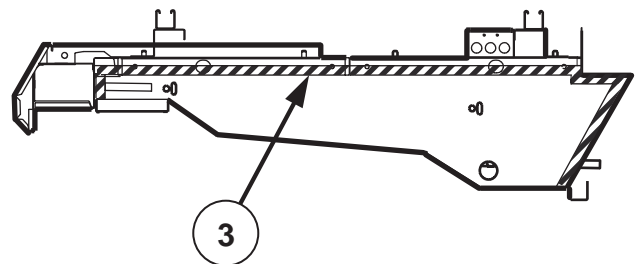


Note: Case To Be Sealed And Gasketed As Shown

D5RRI

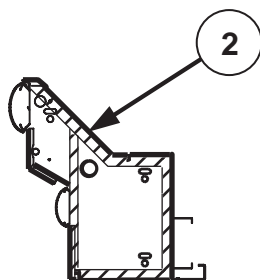
-  **2** 1/2 in. x 1/2 x 60
-  **3** 1/2 in. x 15/8 x 120

- 3** Apply **Gasket – 2** to the lower assembly as shown in Figure 3. On upper assembly, apply **Gasket – 3** to *cover foam-to-metal gap* at rear and across top as shown in Figure 3. Apply **Gasket – 3** to rear of uprights on **D5RRIS**. Lap gaskets at corners. Check that there are no gaps between gasket and case.
- Do not stretch gasket, especially around corners.
 - Do not butt gaskets; always lap joints.
 - Remove paper backing after gasket is applied.
 - Gasket has high tack adhesive and must be properly placed the first time.



D5RRIS

Optional Low Front



Standard Front

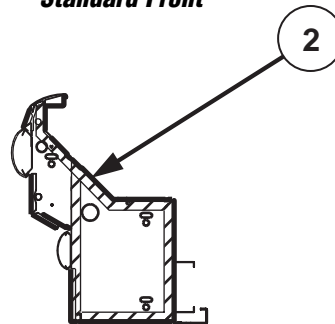


Figure 3. Apply Gaskets

4 Fasten **End Assembly – 4** to merchandiser using **Flat Washer – 5**, **Lock Washer – 6** and **Cap Screw – 7** as shown in Figure 4. Tighten until gaskets are compressed.

After end assembly has been tightened, insert **Plug Button – 8**.

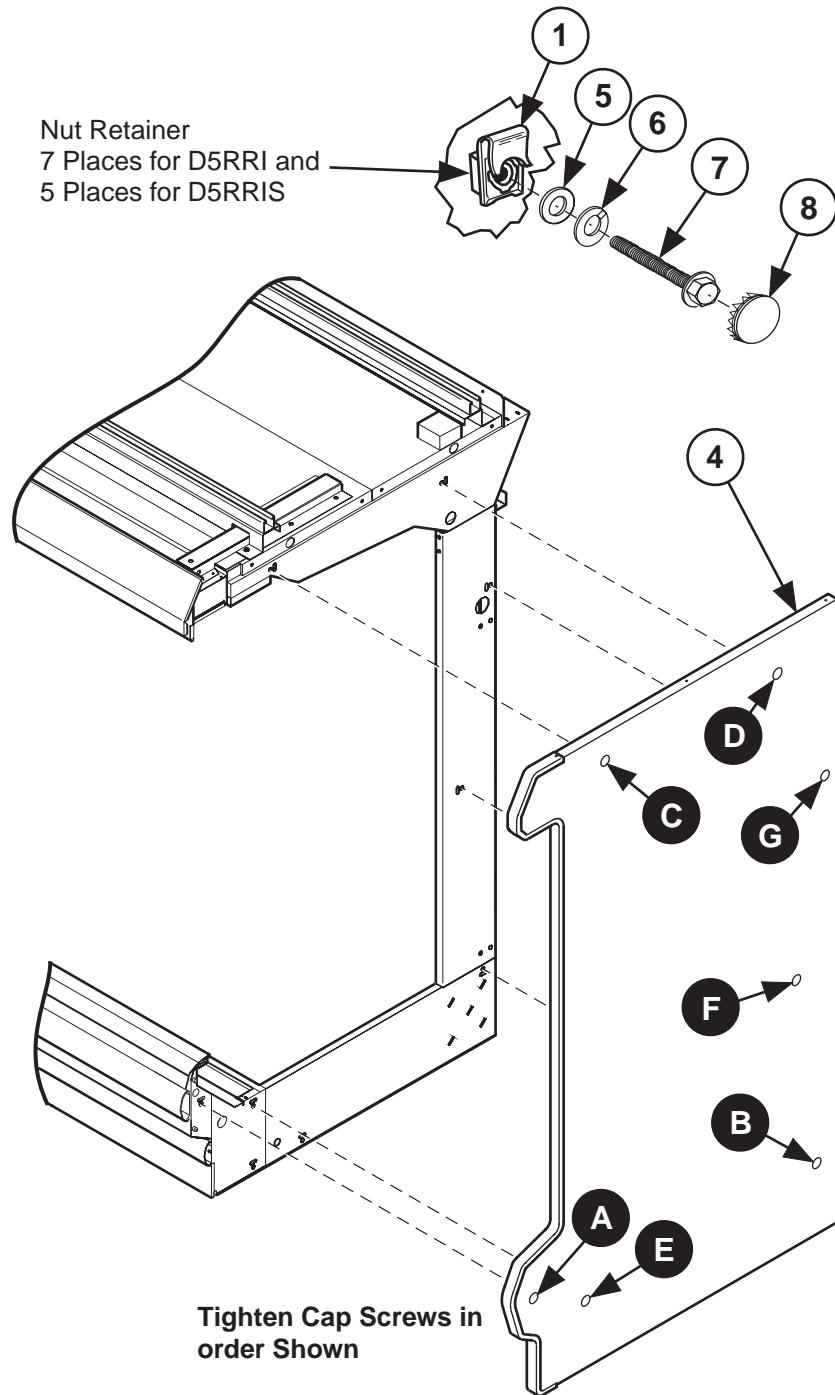
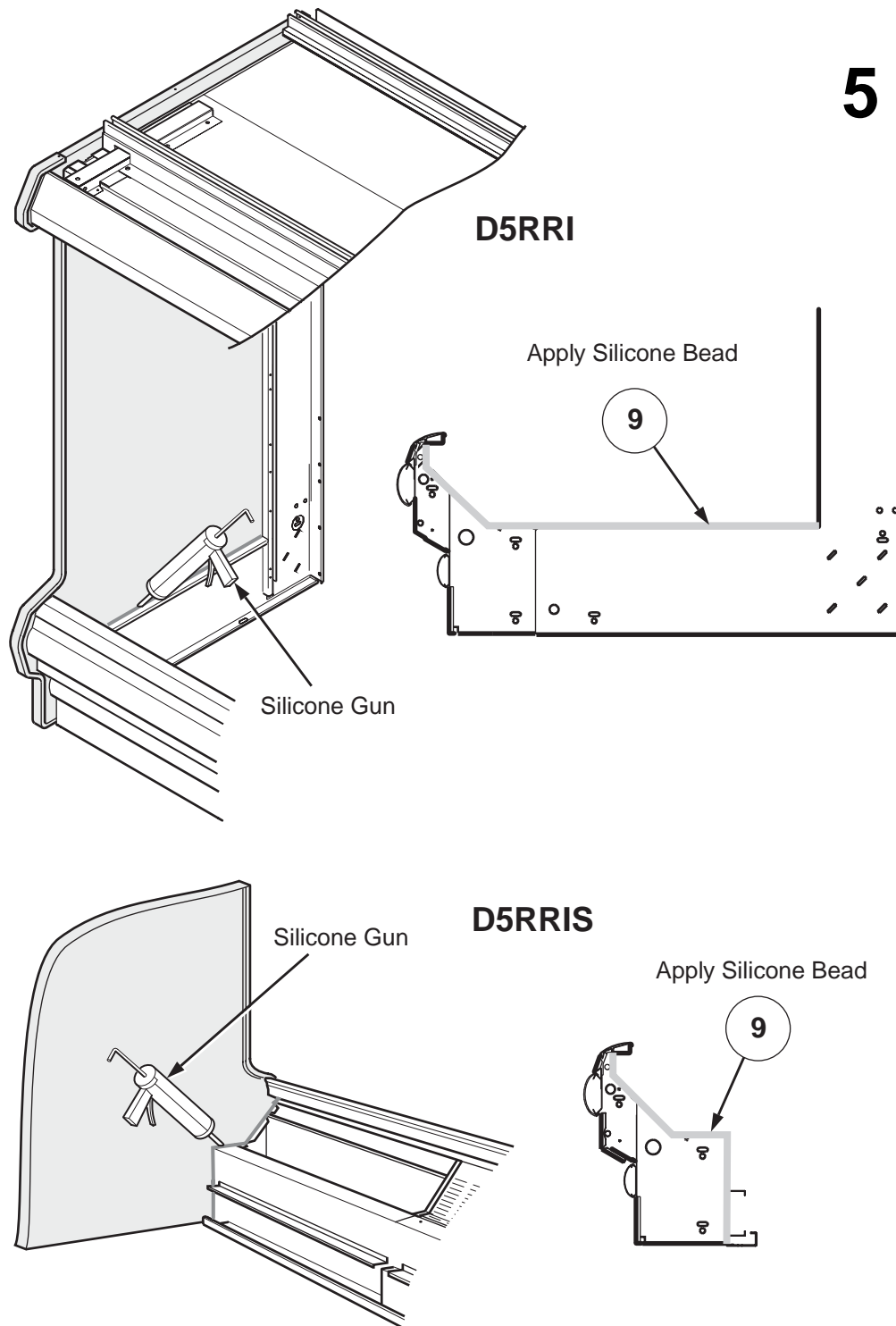


Figure 4. Fastening End



5 Apply a bead of **Silicone – 9** where end and case join as shown in Figure 5. Replace honeycomb when silicone is dry.

Figure 5. Applying Silicone

**FOR METAL TOP RAIL,
 GO TO STEP 9.**

Non-metal rail only.

6 Starting at the left end of the line-up, position the **Top Rail Starter – 10** as shown in Figure 6.

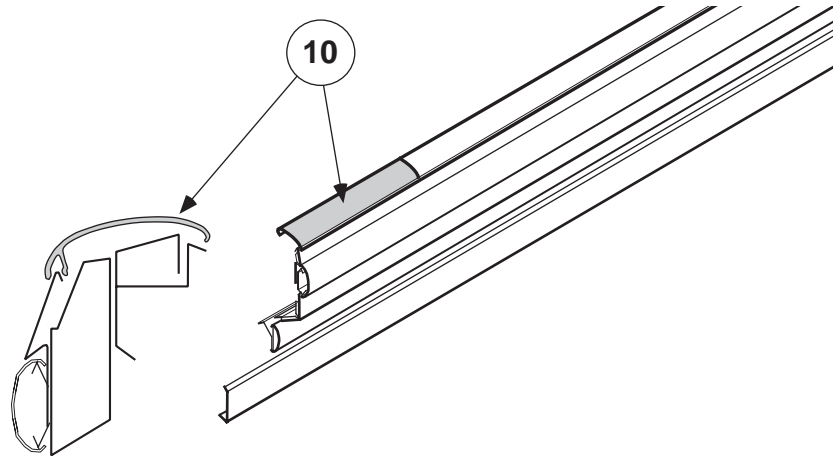


Figure 6. Position Top Rail Starter

Push the bottom portion of the short top rail section down over the color panel. It helps if you lift the top with your other hand as shown in Figure 7. You will hear and feel the trim “snap” into place.

NOTE: The trim must “snap” to be properly positioned.

Use one hand to push the top rail toward the rear of the case while using the other hand to “snap” the top section down over the back edge as shown in Figure 7. Again, **be sure it “snaps”** into place.

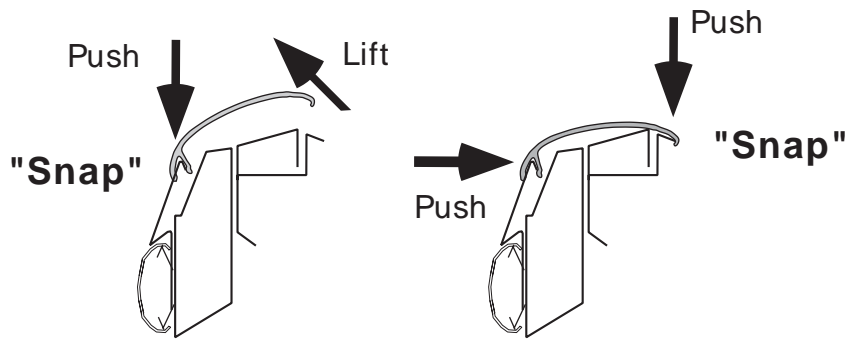


Figure 7. Installing Rail

7 Install full length top rail flush with starter and offset across joint using the same procedures. Continue installing the top rails the length of the line up. **Do NOT install last section at this time.**

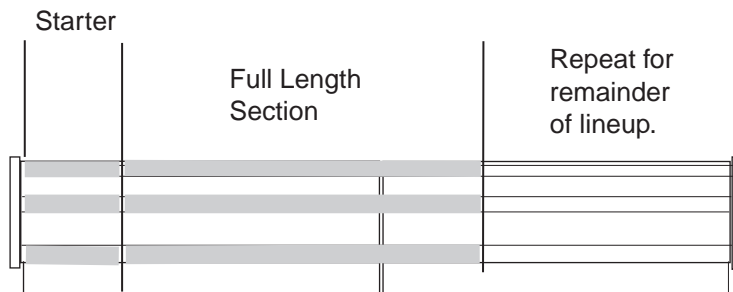
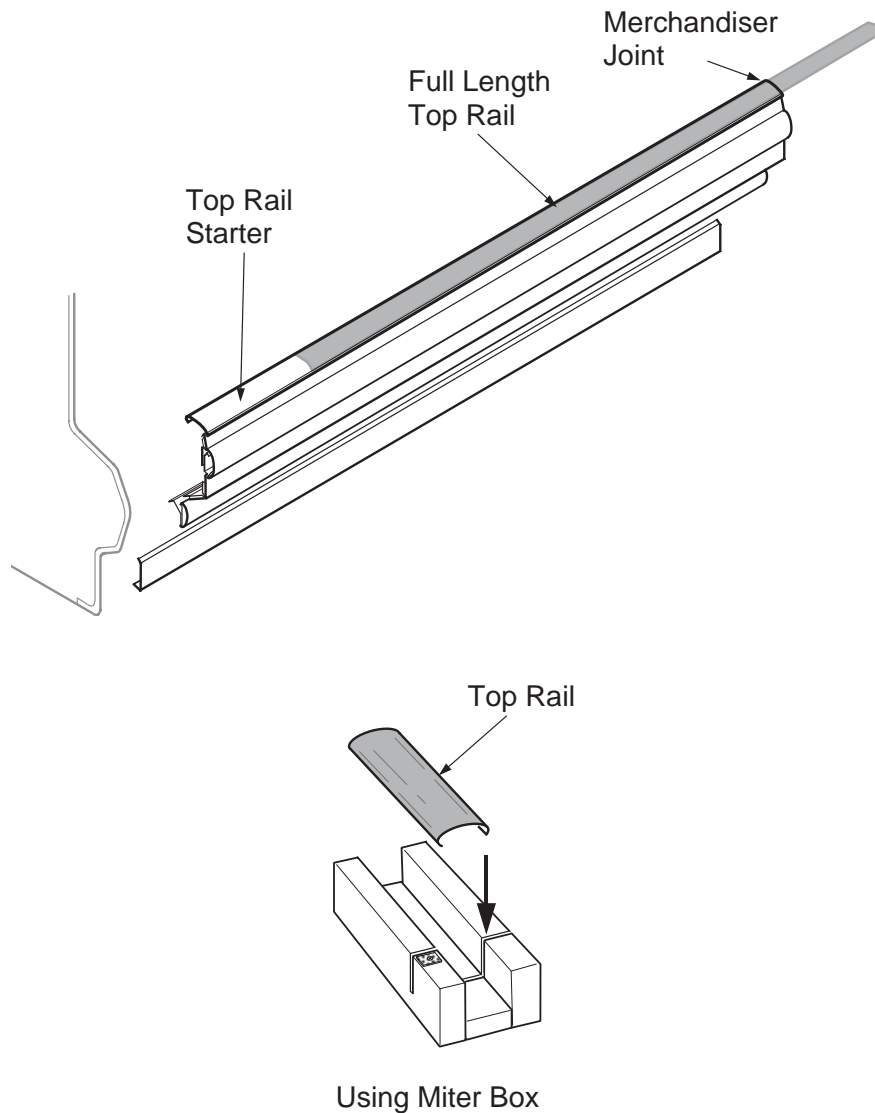


Figure 8. Install Full Length Rails



Once all except the last sections of the top rail have been installed, refrigerate the lineup for at least six (6) hours.

The last sections of top rail should be kept inside a refrigerated case or cooler during this time. This will allow the top rails to contract.

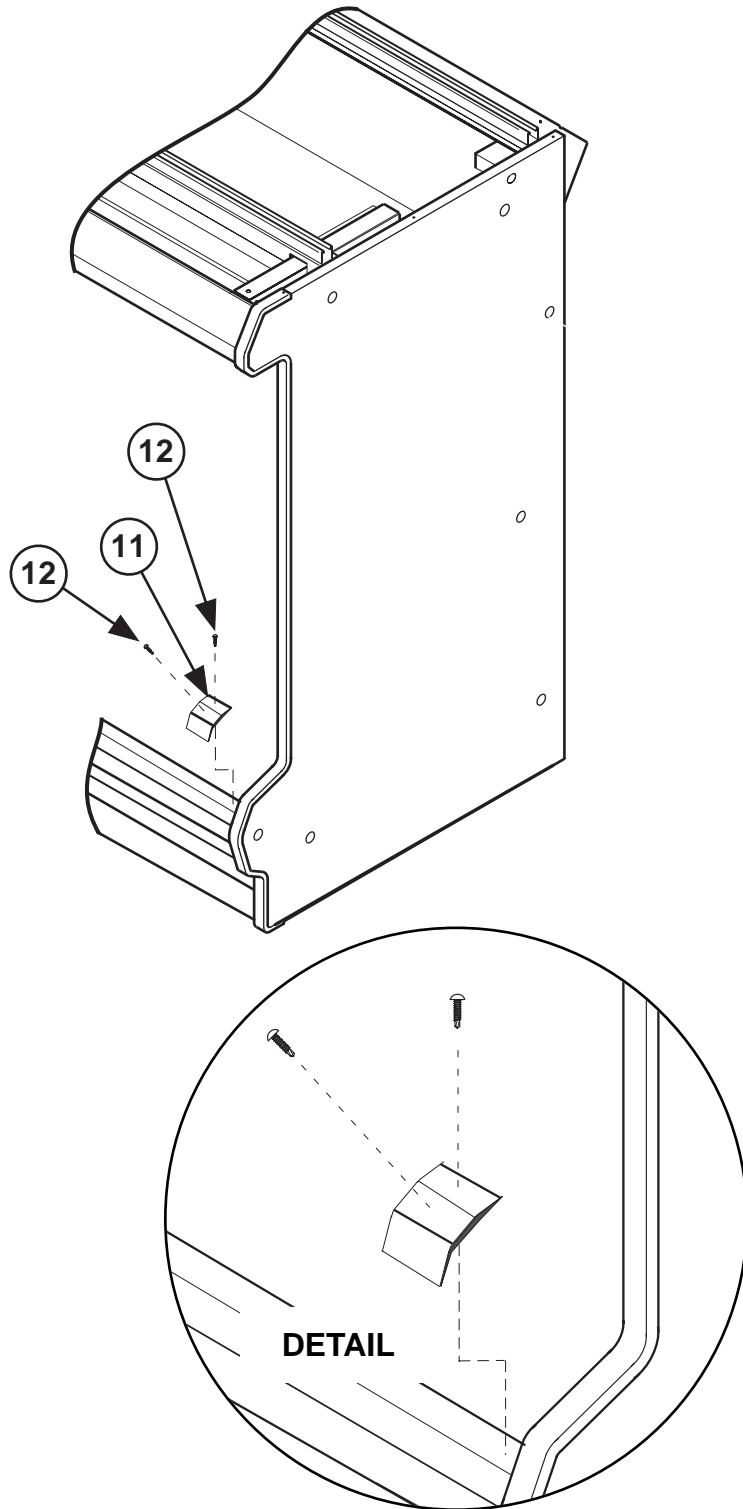
- 8** Go to the right end of the case and tap the top rail to close any gaps.

Measure between *right* end and installed rail. Cut the last section of top rail. Use a miter box and fine-toothed saw to cut last top rail to length. Install internal trim flush to right end. Install the last section of top rail.

Figure 9. Installing Top Rail After Starter

For metal rail installation only.

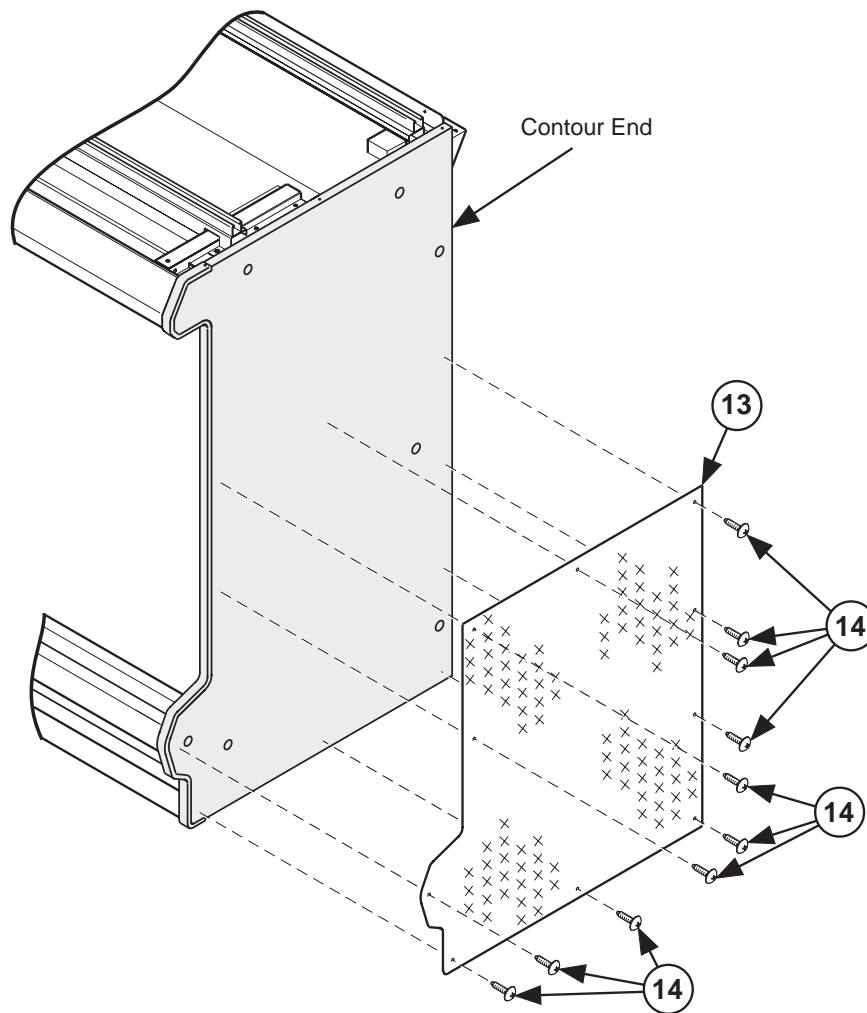
- 9** Place the **Top Rail Trim – 11** flush to the end assembly. Attach the trim using **Screws – 12** as shown.



Installing End Trim
(Metal Top Rails Only)

Optional End Protector

- 1** Fasten **End Protector – 13** with **Screws – 14** as shown. Screw locations will vary with tread pattern.



Installing End Protector

Optional End Bumper

- 1** Position **End Bumper Retainer – 15** against end assembly as shown and check for level. See illustration for placement. Fasten with **Screws – 16** through centerline groove.
 - 2** Place rear **Bumper End Cap – 17** over retainer and slide the end cap forward until it stops. Fasten using **Screw – 16**. See detail.
 - 3** Slide **End Bumper – 18** into bumper retainer and back against rear end cap.
 - 4** Place front **Bumper End Cap – 17** over retainer and under bumper. Mark location of front of end cap. Remove end cap and slide the bumper off. Slide the front bumper end cap to mark and fasten with **Screw – 16**.
 - 5** Hook the **End Bumper – 18** over the retainer and push down until it engages, front to back.
- If installation will be too tight, use a miter box and fine-toothed saw to trim bumper before the bumper is fully engaged. Once engaged, the bumper is difficult to remove without damage.

