

STEPS:

1) Remove Anthony hold open, door, hardware & bottom torque master.

2) Place stiffener-door rtrnr L/R as show in Figure 1 for drilling Template:

- A) Place back edge of stiffener against outer edge of wireway cover ridge
- B) Place notched edge against aluminum casting
- C) Drill (3) 9/64 dia. holes

3) Secure stiffener with (3) 8-32 x 1 type F Phillips Flat Head Screw: P/N (See Table 1).

4) Place top hinge pin socket Figure 4 in casting slot as show in Figure 1.

D) Drill (1) hole 9/64 dia. hole, secure socket with (1) 8-3/4 Phillips AB Pan Head Screw (See Table 1). If door drags at top of door, replace top hinge pin socket with off set top hinge pin socket Figure 5.

5) Place bottom hinge socket as shown in Figure 2 for drilling template:

- E) Place back edge of bottom hinge socket against outer edge of wireway cover ridge
- F) Place long edge of bottom hinge socket as shown over torque master opening (See Figure 3)
- H) Drill (2) 9/64 dia. holes

6) Secure bottom hinge pin socket with (2) 10-24 x 5/8 type F Phillips Pan Head Screw P/N (See Table 1)

7) Install Innovator II Door: Bottom hinge pin first, depress top hinge pin and tilt door into place.

8) Install screw-door retainer (J) through door retainer into 1/4-28 threaded hole in stiffener (Top Frame).

9) Install Innovator II Door retainer flat.

10) If top hold open screw interferes with the frame, replace Holdopen Shoulder Screw (Figure 6A) with Hex. Head Shoulder Screw (Figure 6B). **The way to put the Hex. Head Screw is with the door open, lay the Retainer door like if this will be install, put the screw above and install.**

FIGURE 4

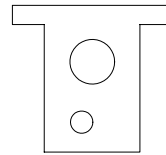


FIGURE 1

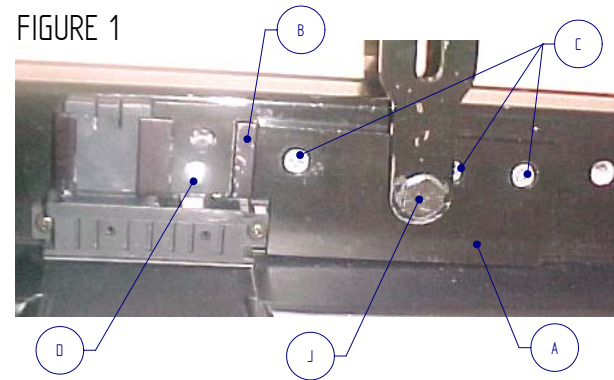


FIGURE 5

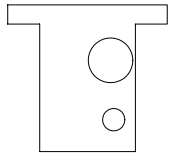


FIGURE 2

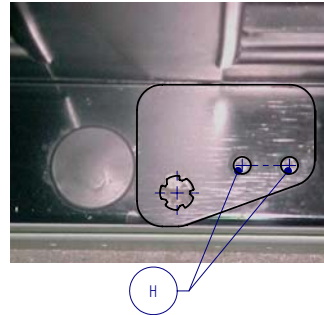


FIGURE 3

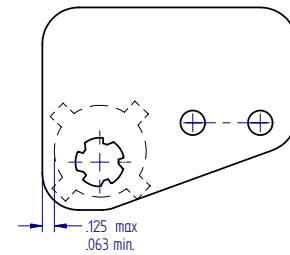
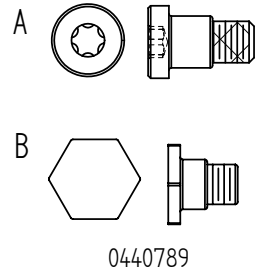
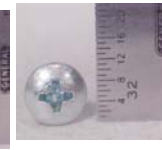


FIGURE 6



0441116



0130716



0441115

TABLE 1

SCREW P/N	DESCRIPTION	LOCATION
0130716	(D) SCREW-SM 8 X 3/4 PHIL AB	TOP FRAME (1 PZ)
0440789	(J) SCREW-DOOR RETAINER	THRU DOOR RETAINER INTO TOP FRAME (2 PZ)
0441115	(C) SCREW-#8-32X1 TYPE F FLT	TOP FRAME (4 PZ)
0441116	(H) SCREW-#10-24X5/8 TYPE F	BOTTOM FRAME (2 PZ)

NOTES APPLICABLE UNLESS OTHERWISE SPECIFIED

DO NOT SCALE
FACE SIDE SHOWN
DIMENSIONS TO THE OUTSIDE
PART TO BE FREE OF BURRS, SHARP EDGES, AND CORNERS

LINEAR DIMENSIONS ±.031" / (±1 MM)
ANGULAR DIMENSIONS ± 2°
HOLE TO HOLE ± .010" / (±.5 MM)

THIS DOCUMENT CONTAINS PROPRIETARY INFORMATION OF THE HUSSMANN CORPORATION IT IS TRANSMITTED TO YOU IN CONFIDENCE AND TRUST, AND IS TO BE RETURNED UPON REQUEST. ITS CONTENTS MAY NOT BE DISCLOSED IN WHOLE OR IN PART TO OTHERS OR USED FOR OTHER THAN THE PURPOSE FOR WHICH TRANSMITTED WITHOUT THE PRIOR WRITTEN PERMISSION OF HUSSMANN CORPORATION.

REV E.O. #	- C- UPDATE NOTES 1 & 5 UPDATE FIGURE 3 RE-ARRANGED FIGURES 1-4 ON SHEET. REMOVED TORQUE FROM TABLE	MATERIAL	-----	BEND DOWN	HUSSMANN			
- 05H113		FINISH	-----	BEND UP				
REV DATE	- D- UPDATE TABLE AND FIGURE	DIM EXT	-----		MOA-ANTH/INNOV RETROFIT			
- 11/JULIO/05		SHEET METAL	-----					
REV BY		PAINT	-----		ORIGINAL PART NUMBER & REV			
- ANNA OG		ED #	-----					
REVIEWED BY	APPROVED BY	N9145-01	CDB	30/07/02	1 / 1	in / mm	0441110	E