

Deli, Dairy, Precut and Packaged Produce

PARTS LIST

Item No.	Quantity	Description
1.	1	Gasket $\frac{1}{2}$ x $1\frac{5}{8}$ x 180
2.	1	Gasket $\frac{1}{2}$ x $\frac{1}{2}$ x 120
3.	1	White Silicone 10 oz.
4.	1	End Assembly
5.	1	Spacer
6.	5	Flat Washer $\frac{5}{16}$
7.	5	Hex Nut $\frac{5}{16}$ - 18
8.	5	Stud $\frac{5}{16}$ - 18



WARNING

— LOCK OUT / TAG OUT —

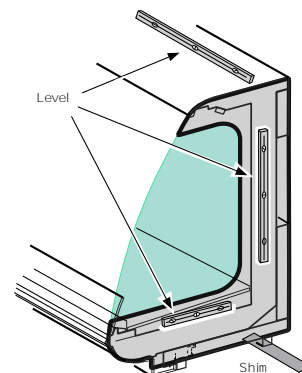
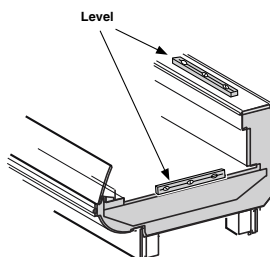
To avoid serious injury or death from electrical shock, always disconnect the electrical power at the main disconnect when servicing or replacing any electrical component. This includes, but is not limited to, such items as doors, lights, fans, heaters, and thermostats.

**Level cases are
critical for end
installation
alignment!**

Merchandisers must be level to ensure proper operation of the refrigeration system and to ensure proper drainage of defrost water. When leveling merchandisers, use a carpenter's level as shown. Do not place levels on display pans or on shelves.

NOTE: Make sure merchandisers have been leveled according to the installation instructions. Carefully unpack and inspect the End Kit, making sure there is no breakage or damage.

NOTE: Quantity of studs, washers and hex nuts is dependent on the Elite Self-Service model.



REMOVE ITEMS FROM THE MERCHANDISER

1 Items shown in Figure 1 must be removed before end can be installed.

- A. Shelves
- B. Remove Rear Panel
- C. Remove Display Pans
- D. Remove Honey Comb
- E. Front Return Air Grille

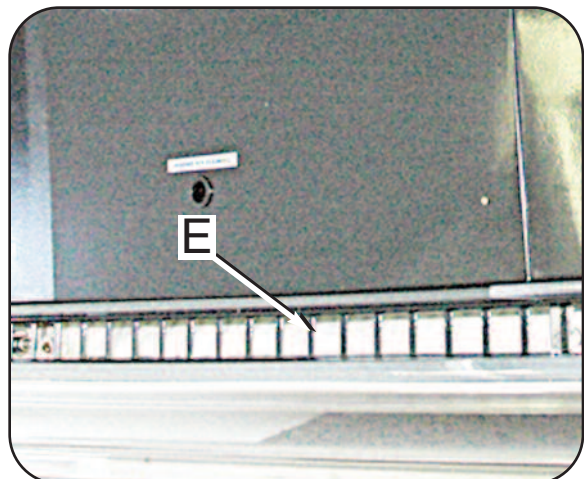
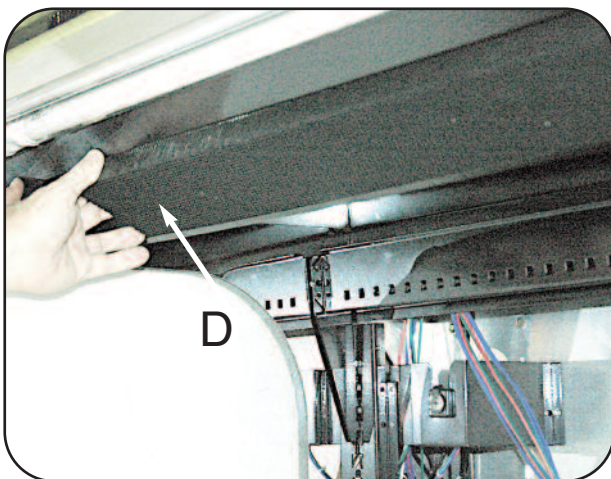
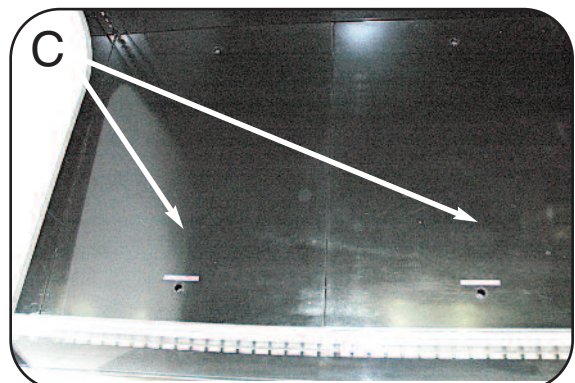
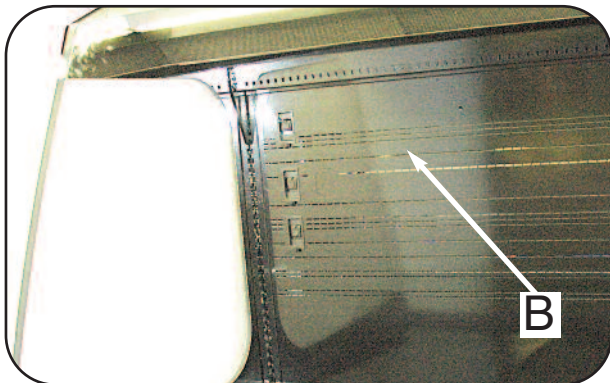
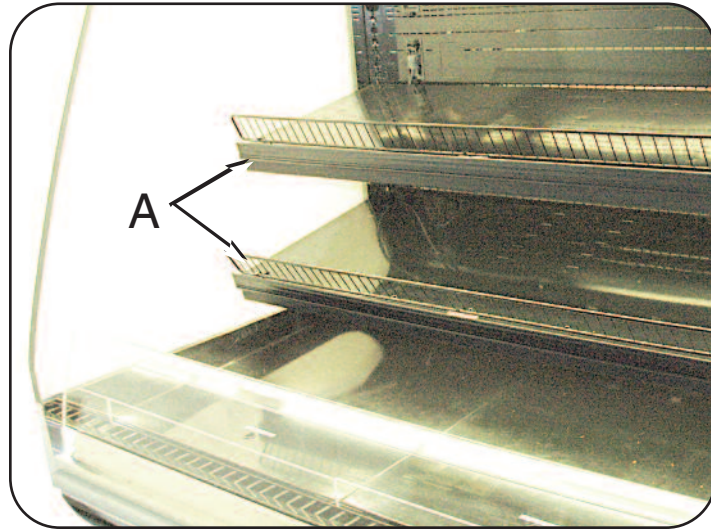


Figure 1. Remove Items from the Merchandiser

APPLY GASKETS

- 2** Apply 1 ⁵/₈ in. (321 mm) Gasket (Item – 1) to white foam panel beginning from the top, front canopy, down to foam bottom, as shown in **Figure 2**.

Bend gasket around corner of vertical brace as shown in **Detail A**.

Cut gasket 1 in. below horizontal white foam bottom panel as shown in **Detail B**.

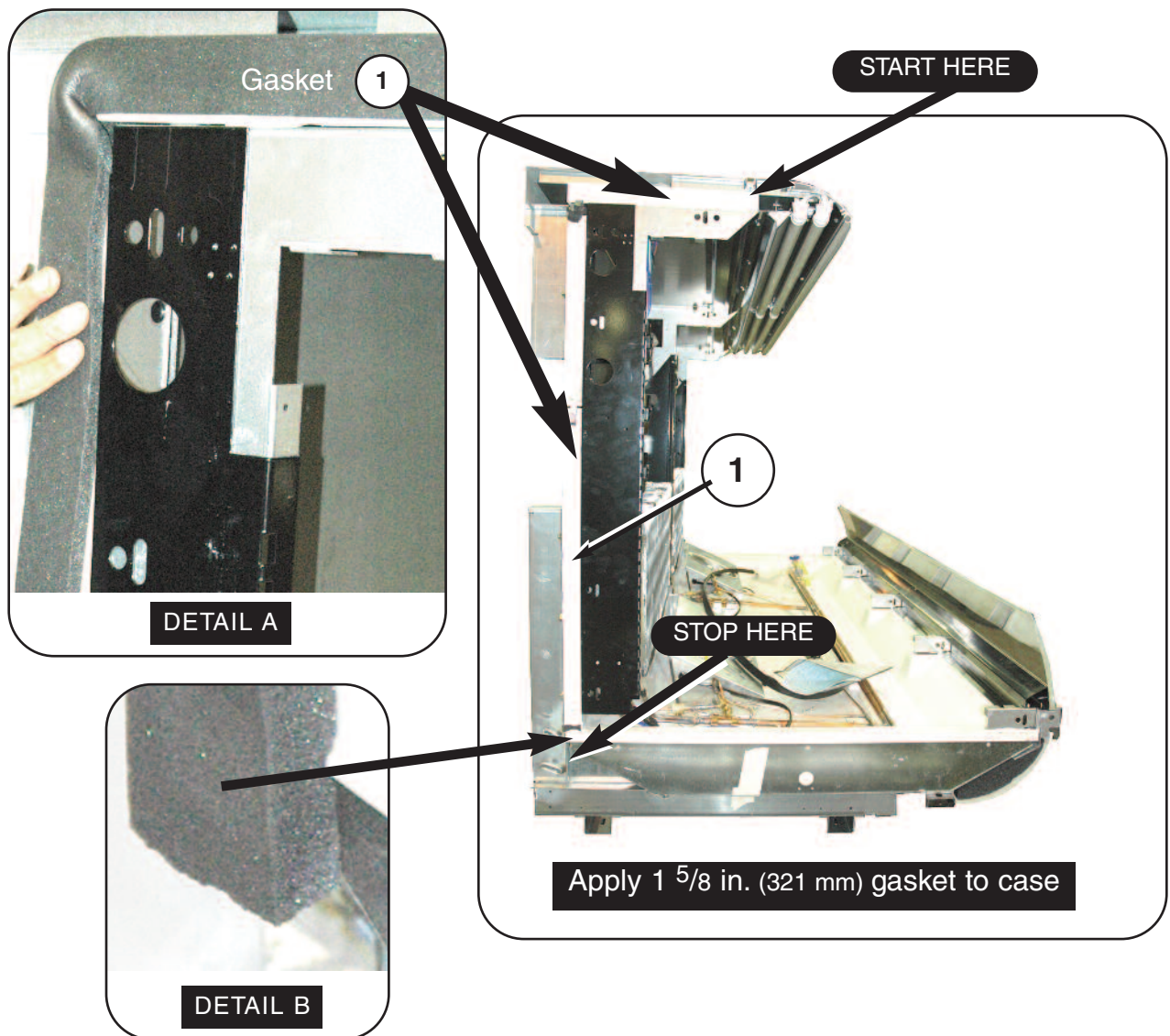


Figure 2. Apply 1 ⁵/₈ in. Gasket to the Merchandiser

3 Apply 1/2 in. (13 mm) Gasket (Item – 2) to white foam bottom panel beginning from the top of the steel bracket behind the lower corner of the front glass plate. Next, slowly bend the gasket, and apply the gasket to the lower, white, foam, bottom panel as shown in **Detail A**.

- Do not stretch gasket, especially around corners.

- Do not butt gaskets; always overlap gaskets, one over the other, as shown in **Detail B**.

- Remove paper backing after gaskets have been applied.

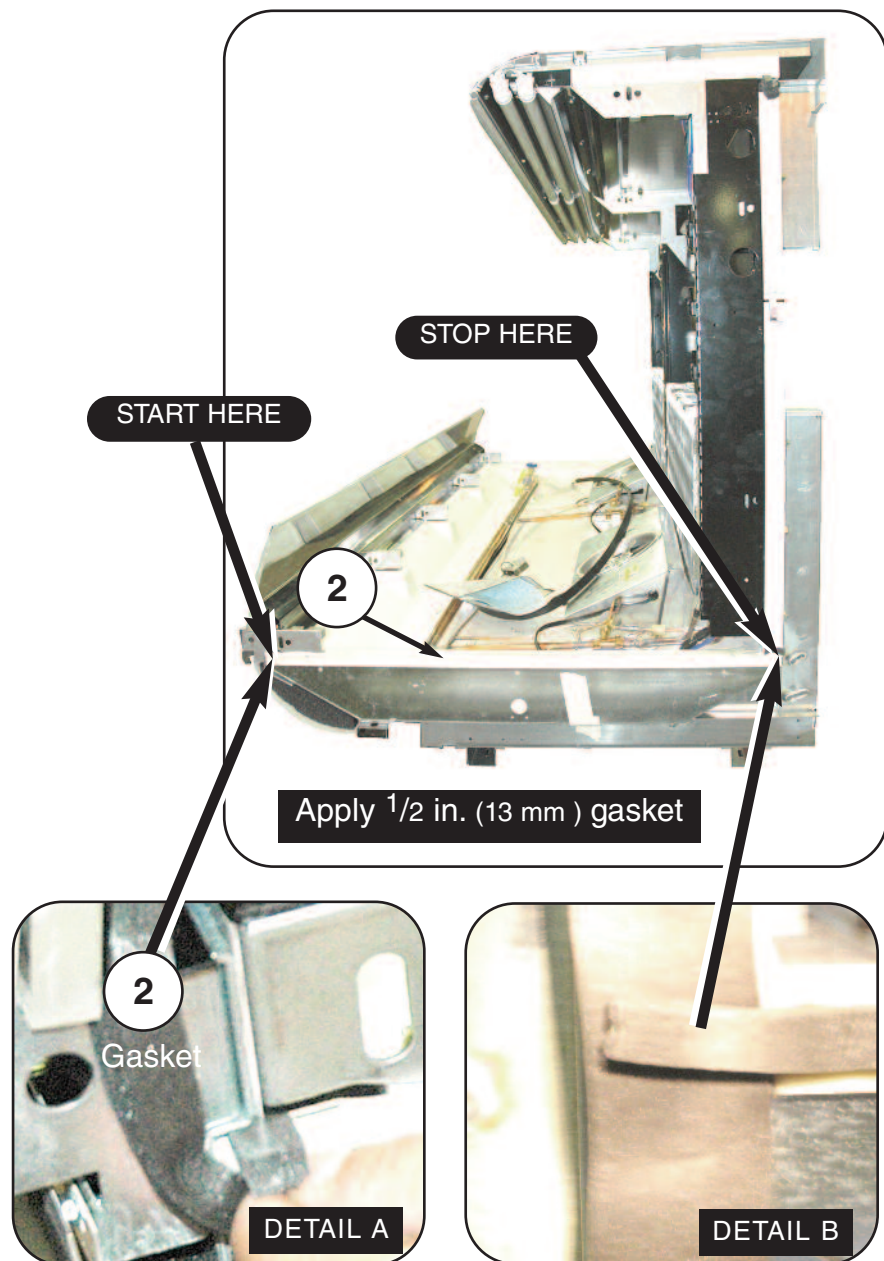


Figure 3. Apply 1/2 in. Gasket to the Merchandiser

INSTALL STUDS AND SPACER

- 4** Remove all packaging from the End Assembly, and inspect for damage.

Begin by fastening $\frac{5}{16}$ studs (Item – 8) to the threaded recesses of the End Assembly. The short threaded side of the stud goes into the End Assembly.

Insert spacer (Item – 5) to recess located at the top, curved edge on the End Assembly.

NOTE: Quantity of studs, washers and hex nuts is dependent on the Elite Self-Service model

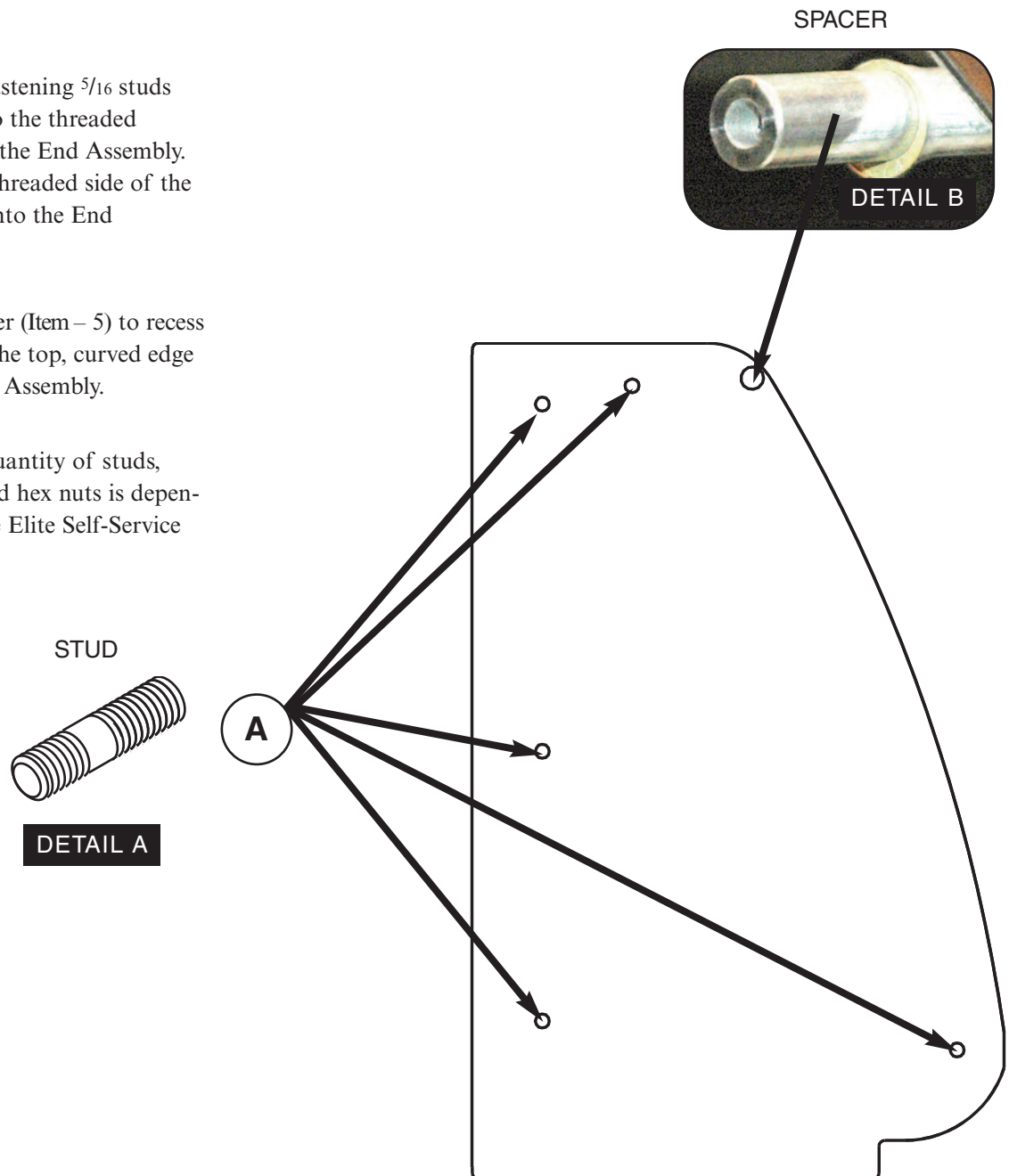


Figure 4. Prepare End Assembly for Installation

JOIN END ASSEMBLY

- 5** Align the End Assembly (Item – 4). Note: This step requires two persons, one on each side of the End Assembly.

Insert bottom studs on the End Assembly through right-facing, joining bracket slot on the merchandiser as shown in **Detail A**.

Insert spacer attached to the End Assembly to the recess on the front canopy of the merchandiser as shown in **Detail B**.



Insert top studs on the End Assembly through top, right-facing, joining bracket slot on the merchandiser as shown in **Detail C**.

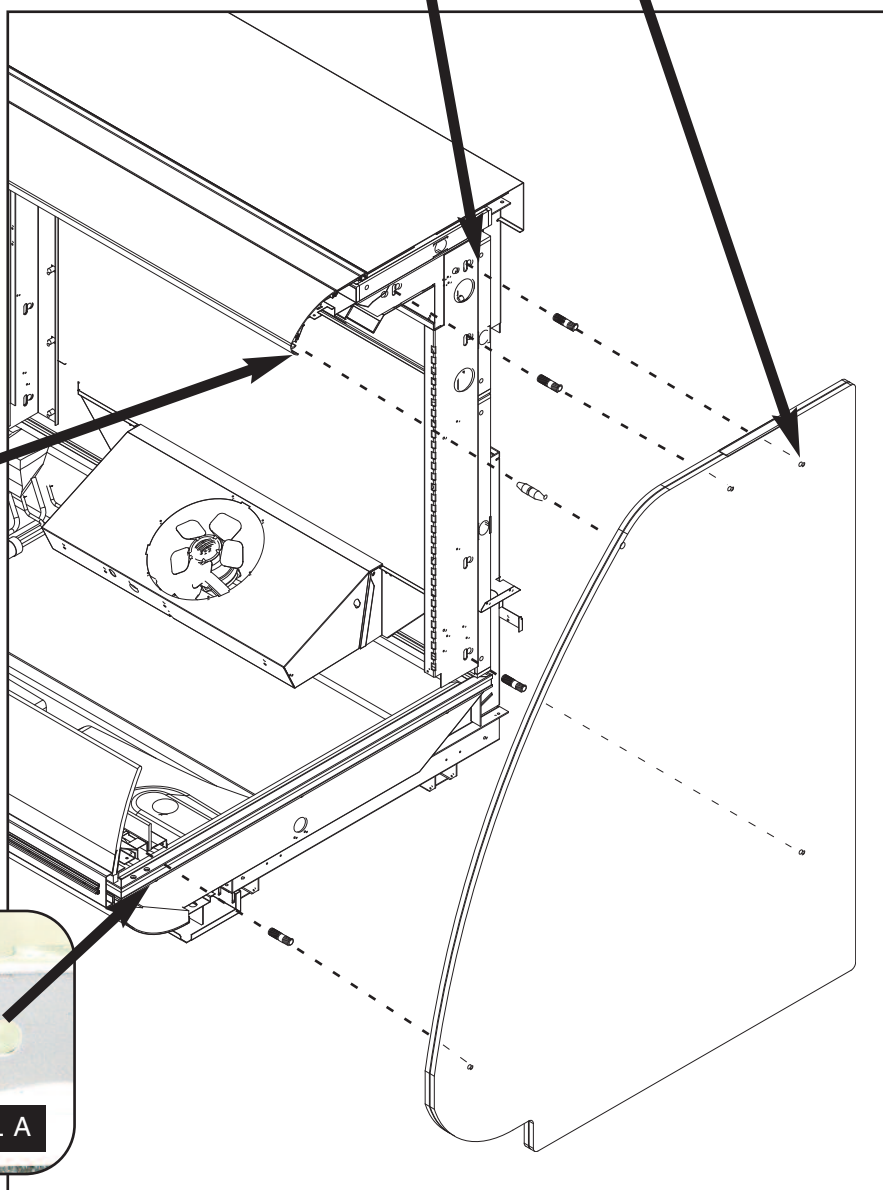
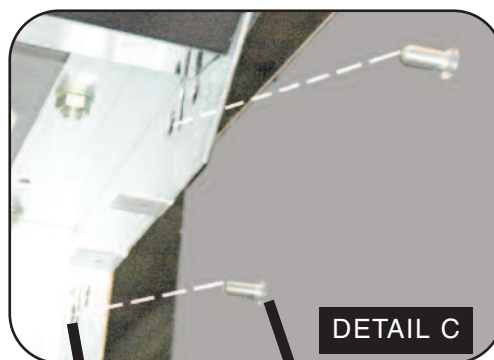


Figure 5. Align End Assembly

- 6** Fasten the End Assembly studs using Flat Washers (Item – 6) and Hex Nuts (Item – 7) as shown in Detail A.

Wear gloves when tightening hex nuts near coils.

NOTE: If End Assembly does not align, use center joining bracket slot as shown in **Detail B**.

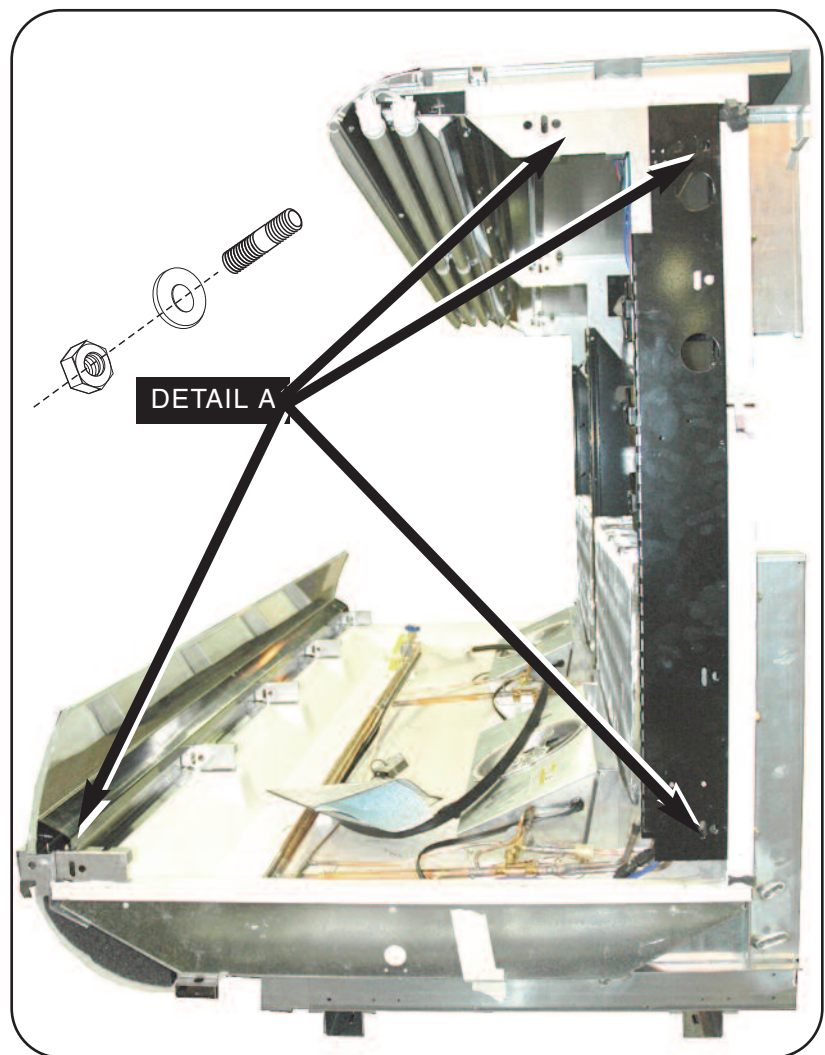


Figure 6. Fasten End Assembly

APPLY SILICONE CAULK

- 7** Apply a 1/2 in. bead of white, silicone caulk (Item – 3) where the white tub of the merchandiser meets the End Assembly beginning at the corner near the coil as shown in **Detail A**.

Smooth silicone caulk bead against tub and End Assembly using a clean, cloth or rubber glove as shown in **Detail B**.

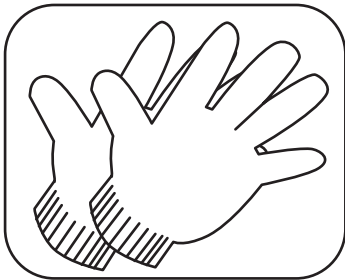
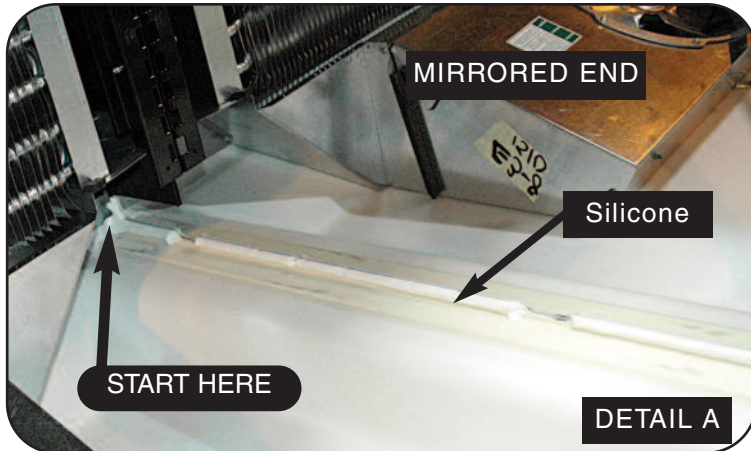


Figure 7. Apply Silicone Caulk