

We reserve the right to change or revise specifications and product design in connection with any feature of our products. Such changes do not entitle the buyer to corresponding changes, improvements, additions or replacements for equipment previously sold or shipped.

Item	Part #	Description	Wiring Item #	Item	Part #	Description	Wiring Item #
<b>FAN ASSEMBLIES, AND THERMOSTATS</b>				<b>HEATERS</b>			
A.	<b>4W</b> Standard Fan Assembly		(1)	F.	208V Evaporator Defrost Heaters		(5)
	0392457	Fan Motor, Evaporator (MO.4410101)			0481864	4 ft case (HE.4850637)	
	0464847	Fan Blade (FB.4780649)			0444057	6 ft case (HE.4850620)	
					0462159	8 ft case (HE.4850603)	
					0444058	12 ft case (HE.4850571)	
	<b>4W</b> Energy Efficient Fan Assembly		(1)	G.	208V Drip Pan Defrost Heaters, Electric		(6)
	0477653	Fan Motor, Evaporator (MO.4410544)			0481865	4 ft case (HE.4850638)	
	0464847	Fan Blade (FB.4780649)			0444300	6 ft case (HE.4850609)	
B.	Optional Adjustable Refrigeration Thermostat		(2)		0462160	8 ft case (HE.4850636)	
					0444296	12 ft case (HE.4850572)	
C.	0398557	Defrost Termination Thermostat (Front/Electric Defrost only) (CT.4440611)	(3)		120V Drip Pan Defrost Heaters, Koolgas		(7)
					0488967	4 ft case (HE.4850641)	
					0465906	6 ft case (HE.4850628)	
					0465907	8 ft case (HE.4850622)	
D.	0398558	Defrost Termination Thermostat (Rear/Electric Defrost only) (CT.4481088)	(3)		0465908	12 ft case (HE.4850623)	
E.	0481370	Heater Switch (Koolgas Defrost only) (CT.4440738)	(4)	H.	Nosing Anti-sweat Heaters		(8)
					0495009	4 ft case (HE.4850687)	
					0495006	6 ft case (HE.4850684)	
					0495007	8 ft case (HE.4850685)	
					0495008	12 ft case (HE.4850686)	

Note: Revision M added note on page 3. Other changes marked by bar, underline or circle.

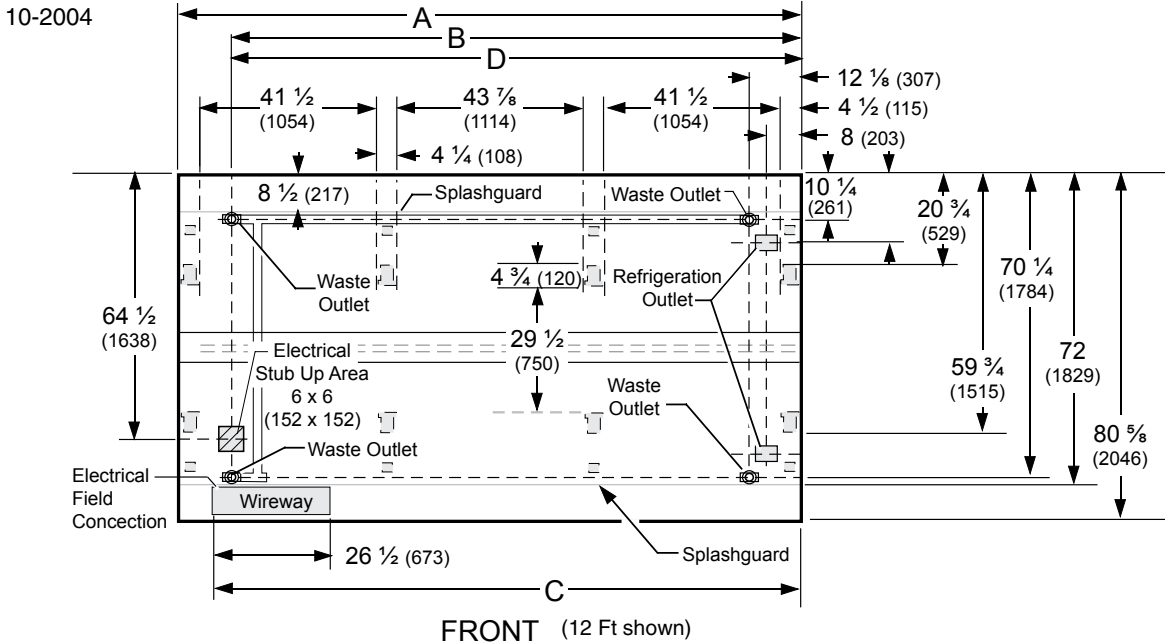
Data sheet - Excel - FW

# Engineering Plan Views

PHYSICAL DATA	
Merchandiser Drip Pipe (in.)	1 1/4
Merchandiser Liquid Line (in.)	3/8
Merchandiser Suction Line (in.)	5/8

## Low / Medium Temperature Wide Island

Dimensions shown as inches & (mm).



	4 ft	6 ft	8 ft	12 ft
<b>General</b>				
<b>(A) Case Length</b> (without ends or partitions) (Each end and insulated partition adds 2 in. (51 mm) to case line up.) Maximum O/S dimension of case back to front (includes bumper)	48 1/4 (1226)	73 3/4 (1874)	96 3/8 (2448)	144 1/2 (3670)
Back of case to front of splashguard	80 5/8 (2046)	80 5/8 (2046)	80 5/8 (2046)	80 5/8 (2046)
Back of case to O/S edge of front leg	72 (1829)	72 (1829)	72 (1829)	72 (1829)
Distance between edges of external legs and center legs	NA	30 1/4 (768)	41 1/2 (1054)	41 1/2 (1054)
Distance between edges of center legs	NA	NA	NA	43 7/8 (1114)
Distance between front legs and splashguard	12 3/8 (312)	12 3/8 (312)	12 3/8 (312)	12 3/8 (312)
<b>Electrical Service</b> (Electrical Field Wiring connection point)				
<b>(B) RH End of case</b> to center of stub up area	36 1/8 (918)	61 5/8 (1565)	84 1/4 (2140)	132 3/8 (3363)
Back of case to center of stub up area	64 1/2 (1638)	64 1/2 (1638)	64 1/2 (1638)	64 1/2 (1638)
Length of electrical wireway <b>Wireway</b>	26 1/2 (673)	26 1/2 (673)	26 1/2 (673)	26 1/2 (673)
<b>(C) RH End of case</b> to LH end of wireway	40 1/2 (1029)	67 1/2 (1715)	90 1/8 (2289)	138 1/4 (3511)
<b>Waste Outlets</b> (One each end)				
<b>(D) RH End of case</b> to the center of LH waste outlet	36 1/8 (918)	61 5/8 (1565)	84 1/4 (2140)	132 3/8 (3363)
RH End of case to the center of RH waste outlet	12 1/8 (307)	12 1/8 (307)	12 1/8 (307)	12 1/8 (307)
Back O/S of case to center of waste outlets	70 1/4 (1784)	70 1/4 (1784)	70 1/4 (1784)	70 1/4 (1784)
Schedule 40 PVC drip pipe	1 1/4 (32)	1 1/4 (32)	1 1/4 (32)	1 1/4 (32)
<b>Refrigeration Outlet</b>				
Back of case to center of front refrigeration outlet	64 7/8 (1646)	64 7/8 (1646)	64 7/8 (1646)	64 7/8 (1646)
Back of case to center of rear refrigeration outlet	15 3/4 (400)	15 3/4 (400)	15 3/4 (400)	15 3/4 (400)
RH end of case to center of refrigeration outlet	8 (203)	8 (203)	8 (203)	8 (203)

Wide Island Display with Solid Walls



Hussmann refrigerated merchandisers configured for sale for use in the United States meet or surpass the requirements of the DOE 2012 energy efficiency standards.



**REFRIGERATION DATA\*\***

**Note:** This data is based on store temperature and humidity that does not exceed 75°F and 55% R.H.

	MED	FF	IC
<b>Discharge Air (°F)</b>	+24	-12	-22
<b>Evaporator(°F)</b>	+19	-20	-30
<b>Unit Sizing (°F)</b>	+17	-23	-33
<b>Btu/hr/ft*</b>	MED	FF	IC
<b>PARALLEL</b>	415	530	575
<b>CONVENTIONAL</b>	430	550	600

\*Optional energy efficient motors reduce the refrigeration load by 24 Btu/hr/ft (4 ft and 8 ft models) and 18 Btu/hr/ft (12 ft models).

\*\*Dual temperature operation kits are not suitable for ice cream temperature applications.

**DEFROST DATA**

	MED	FF	IC
<b>Frequency (hr)</b>	24	24	24
<b>Defrost Water (lb/ft/day)</b>	1.6	1.5	1.2

(± 15% based on case configuration and product loading).

<b>ELECTRIC</b>	MED	FF	IC
<b>Temp Term (°F)</b>	48	48	48
<b>Failsafe (minutes)</b>	60	60	60

<b>GAS</b>	MED	FF	IC
<b>Duration (minutes)</b>	NA	15	18

**OFFTIME** Not Recommended

**Standard Defrost Thermostat**  
Close on rise: close 48°F — open 33°F

**CONVENTIONAL CONTROLS**

**Low Pressure Backup Control — CI/CO \*\***

MED	+22°F / +10°F
FF	-17°F / -29°F
IC	-27°F / -39°F

**Indoor Unit Only, Pressure Defrost Termination\*\*\***  
Not Recommended

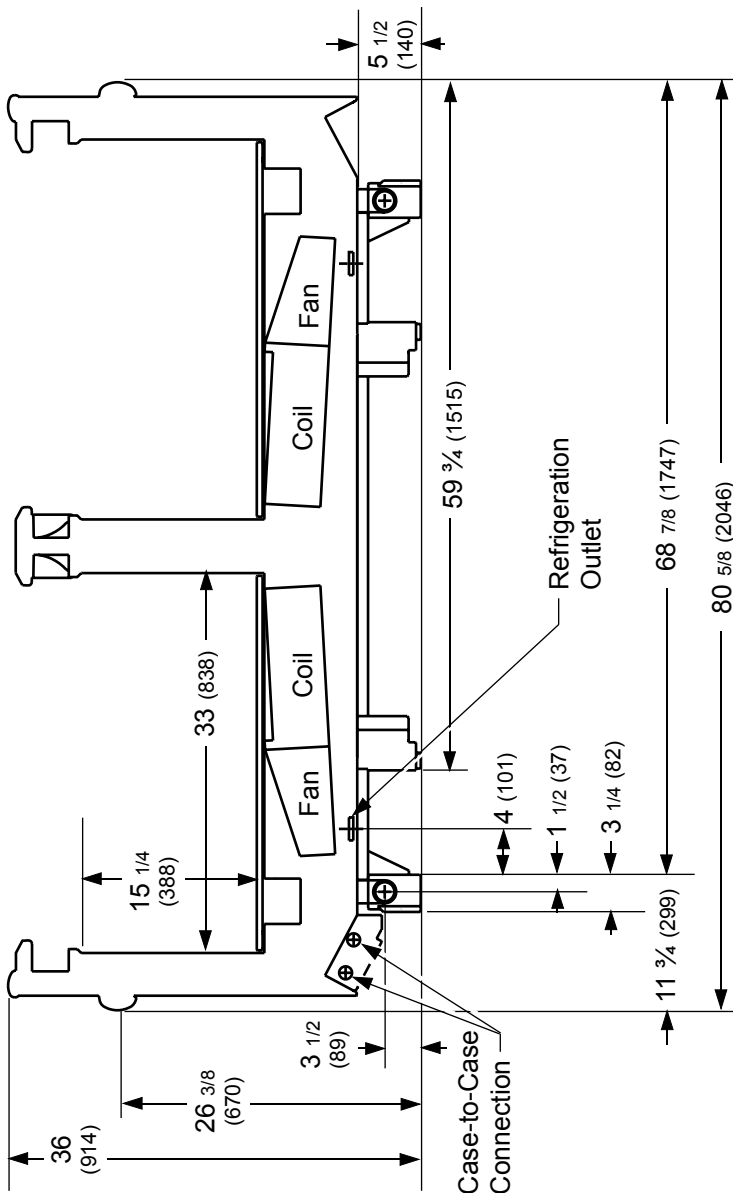
\*\*\*Use a Temperature Pressure Chart to determine PSIG conversions.

**Estimated Charge \*\*\*\***

4 ft	1.7 lb	27 oz	0.8 kg
6 ft	2.1 lb	34 oz	1.0 kg
8 ft	2.5 lb	40 oz	1.1 kg
12 ft	3.7 lb	59 oz	1.7 kg

\*\*\*\*This is an average for all refrigerant types. Actual refrigerant charge may vary by approximately half a pound (8 oz/0.2 kg).

Dimensions shown as inches & (mm).



**NSF Certification**

This merchandiser model is manufactured to meet NSF/ANSI (National Sanitation Foundation) Standard #7 requirements for construction, materials & cleanability.

**Electrical Data**

	<b>4 ft</b>	<b>6 ft</b>	<b>8 ft</b>	<b>12 ft</b>						
<b>Number of Fans – 4W Evaporator</b>	<b>2</b>	<b>2</b>	<b>4</b>	<b>4</b>						
		<b>Amperes</b>					<b>Watts</b>			
	<b>4 ft</b>	<b>6 ft</b>	<b>8 ft</b>	<b>12 ft</b>	<b>4 ft</b>	<b>6 ft</b>	<b>8 ft</b>	<b>12 ft</b>		
<b>Evaporator Fans</b>										
120V 60Hz Standard	0.62	0.62	1.24	1.24	48	48	96	96		
230V 60Hz Standard	0.76	0.76	1.52	1.52	54	54	108	108		
230V 60Hz Export	0.30	0.30	0.60	0.60	48	48	96	96		
230V 50Hz Export	0.36	0.36	0.72	0.72	54	54	108	108		
120V 60Hz Energy Efficient	0.24	0.24	0.48	0.48	16	16	32	32		
230V 60Hz Energy Efficient	0.12	0.12	0.24	0.24	16	16	32	32		
<b>Anti-sweat Heaters (on fan circuit)</b>										
120V 50/60Hz Standard	0.67	1.00	1.33	2.00	80	120	160	240		
230V 50/60Hz Export	0.35	0.52	0.70	1.04	80	120	160	240		
<b>Minimum Circuit Ampacity</b>										
120V 60Hz Standard Energy Efficient	1.11	1.68	2.01	2.68						
230V 60Hz Standard Energy Efficient	0.67	0.84	1.14	1.48						
230V 60Hz Export	0.85	1.02	1.50	1.84						
230V 50Hz Export	0.91	1.08	1.62	1.96						
<b>Maximum Over Current Protection 120V</b>	<b>20</b>	<b>20</b>	<b>20</b>	<b>20</b>						
Maximum Over Current Protection 230V	15	15	15	15						
<b>208V Electric Defrost</b>	8.75	13.07	15.38	23.07	1820	2720	3200	4800		
<b>230V Export Electric Defrost</b>	7.91	11.83	13.91	20.87	1820	2720	3200	4800		
<b>120V Koolgas Defrost</b>	2.50	2.67	3.33	6.66	300	320	400	800		
<b>208V Koolgas Defrost</b>	1.06	1.54	1.92	3.84	220	320	400	800		
<b>230V Koolgas Defrost</b>	1.17	1.70	2.12	4.25	270	400	488	977		
<b>Standard Lighting</b>										
None										

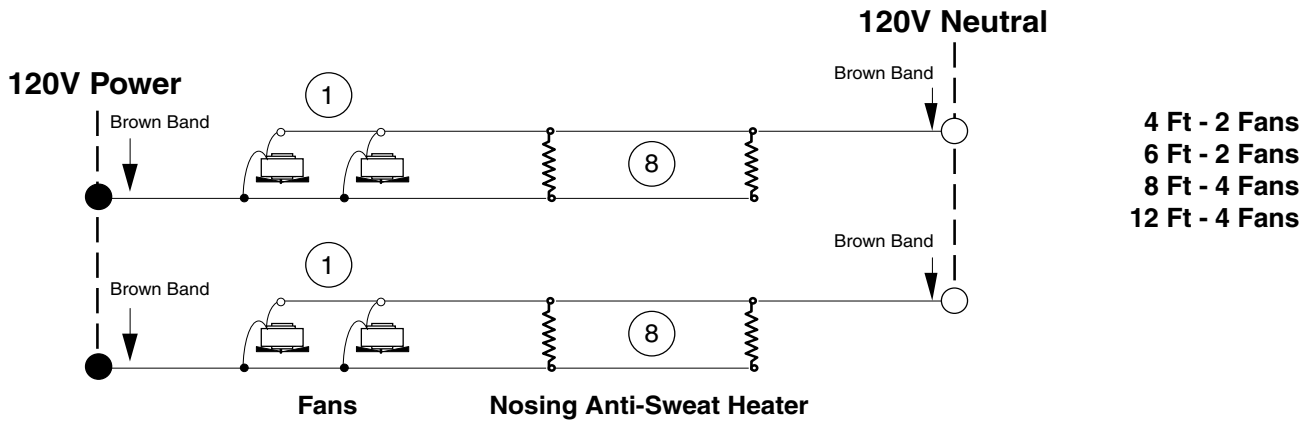
**Product Data**

<i>Recommended Usable Cube</i> <sup>1</sup> (Cu Ft/Ft)	6.99 ft <sup>3</sup> /ft (0.65 m <sup>3</sup> /m)
<i>AHRI Total Display Area</i> <sup>2</sup> (Sq Ft/Ft)	4.93 ft <sup>2</sup> /ft (1.50 m <sup>2</sup> /m)
<i>Shelf Area</i> <sup>3</sup> (Sq Ft/Ft)	5.50 ft <sup>2</sup> /ft (1.68 m <sup>2</sup> /m)

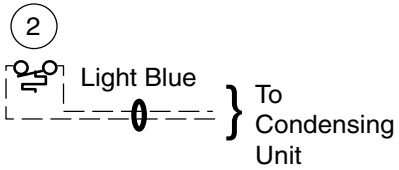
- <sup>1</sup> AHRI Refrigerated Volume less shelving and other unusable space: Refrigerated Volume/Unit of Length, ft<sup>3</sup>/ft [m<sup>3</sup>/m]
- <sup>2</sup> Computed using AHRI 1200 standard methodology: Total Display Area, ft<sup>2</sup> [m<sup>2</sup>]/Unit of Length, ft [m]
- <sup>3</sup> Shelf surface area is composed of bottom deck plus standard shelf complement, as shown in the Hussmann *Product Reference Guide*. The standard shelf complement for this model is NONE.

<b>ESTIMATED SHIPPING WEIGHT <sup>5</sup></b>					
<b>Case</b>	<i>4 ft</i>	<i>6 ft</i>	<i>8 ft</i>	<i>12 ft</i>	<b>Solid End</b>
					<i>(each)</i>
<b>lb (kg)</b>	1000 (454)	1200 (544)	1400 (635)	1600 (726)	75 (34)
<sup>5</sup> Actual weights will vary according to optional kits included.					

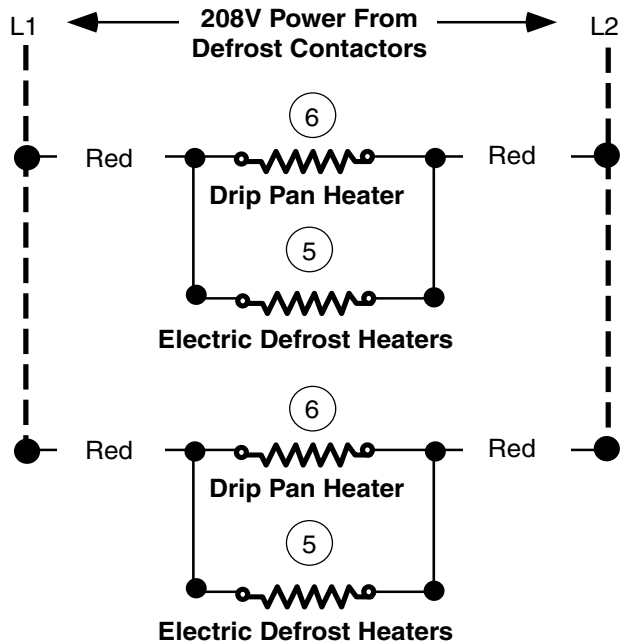
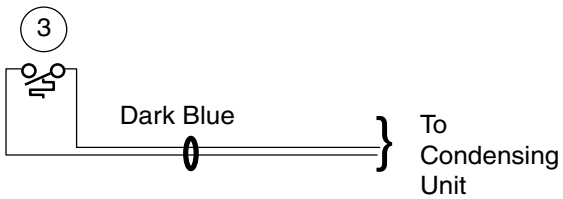
# Electric Defrost – Standard



## Refrigeration Thermostat (Optional)



## Defrost Termination Thermostat



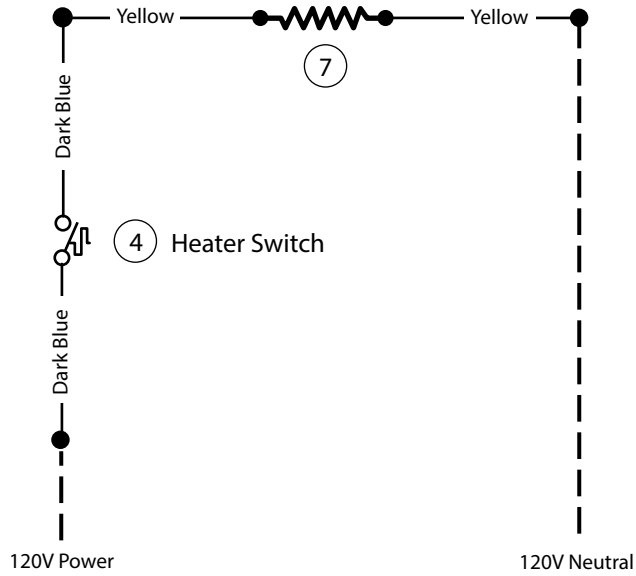
## WARNING

All components must have mechanical ground, and the merchandiser must be grounded.

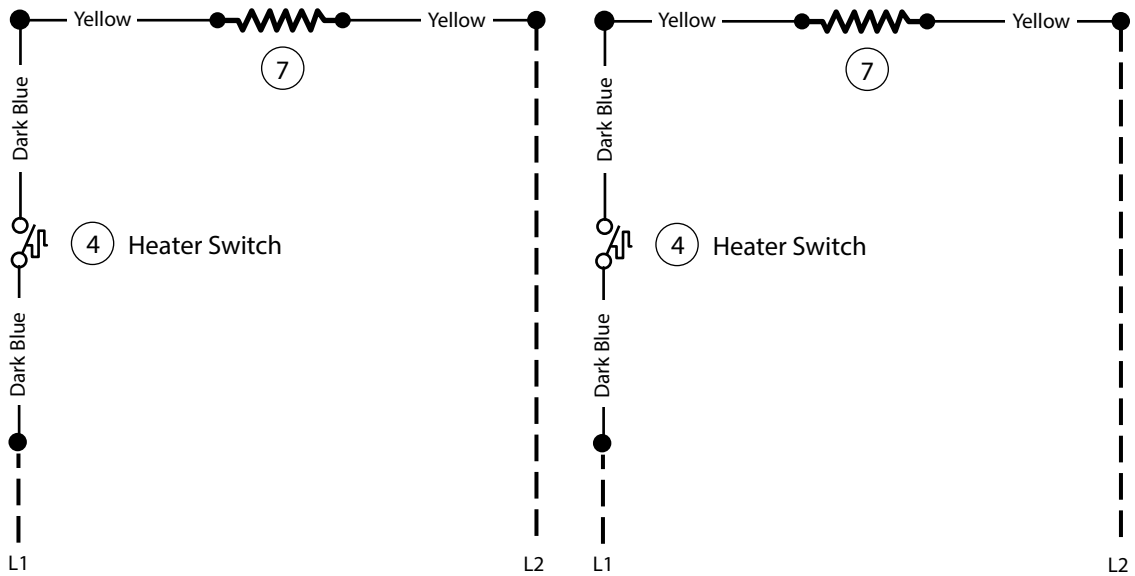
Circled Number = Parts List Item Numbers

# Gas Defrost – Optional

## 120V Drip Pan Heater — Koolgas Only



## 208V/230V Drip Pan Heater — Koolgas Only



### WARNING

All components must have mechanical ground, and the merchandiser must be grounded.

Circled Number = Parts List Item Numbers