

We reserve the right to change or revise specifications and product design in connection with any feature of our products. Such changes do not entitle the buyer to corresponding changes, improvements, additions or replacements for equipment previously sold or shipped.

Item	Part #	Description	Wiring Item #	Item	Part #	Description	Wiring Item #
FAN ASSEMBLIES AND THERMOSTATS				HEATERS			
8 Ft, 10 Ft & 12 Ft				C. Anti-Sweat Heater (3)			
A.	12W Standard	Fan Assembly	(1)	0487122	8 ft (HE.4851033)		
	0047000	Fan Motor, Evaporator (MO.4410103)		0487123	8 ft (HE.4851034)		
	0407532	Fan Blade (FB.4780619) embossing toward motor		0487124	10 ft (HE.4851035)		
	12W Energy Efficient	Fan Assembly	(1)	0487125	10 ft (HE.4851036)		
	0477655	Fan Motor, Evaporator (MO.4410546)		0487126	12 ft (HE.4851037)		
	0407532	Fan Blade (FB.4780619) embossing toward motor		0487127	12 ft (HE.4851038)		
B.	Optional Adjustable Refrigeration Thermostat		(2)	LAMPS AND BALLASTS			
	0448347	(CT.4481631)		D.	Ballast, Electronic		(4)
				0355398	3 Lamps (BA.4480118)		
				0355716	2 Lamps (BA.0355716)		
				E.	Fluorescent Lamp		(5)
					<i>Replace with like fixtures</i>		

Note: Revision C adds energy efficient fan Btu note on page 3.



Engineering Plan Views

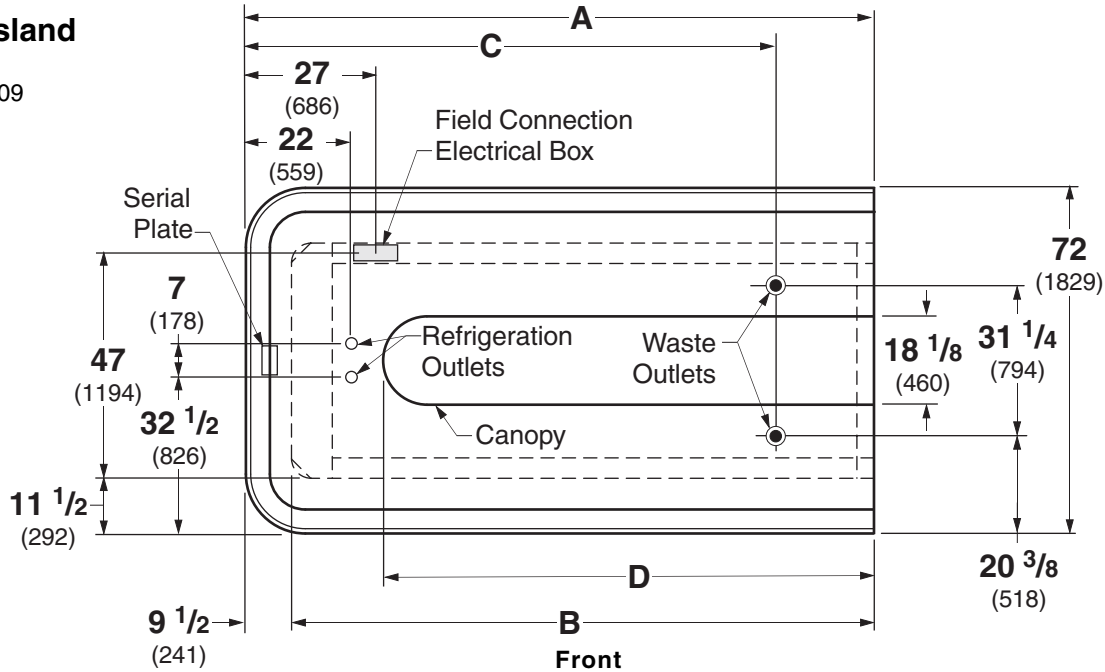
PHYSICAL DATA

Merchandiser Drip Pipe (in.)	1 1/2
Merchandiser Liquid Line (in.)	3/8
Merchandiser Suction Line (in.)	5/8

Dimensions shown as inches and (mm).

RI3E Island

08-2009

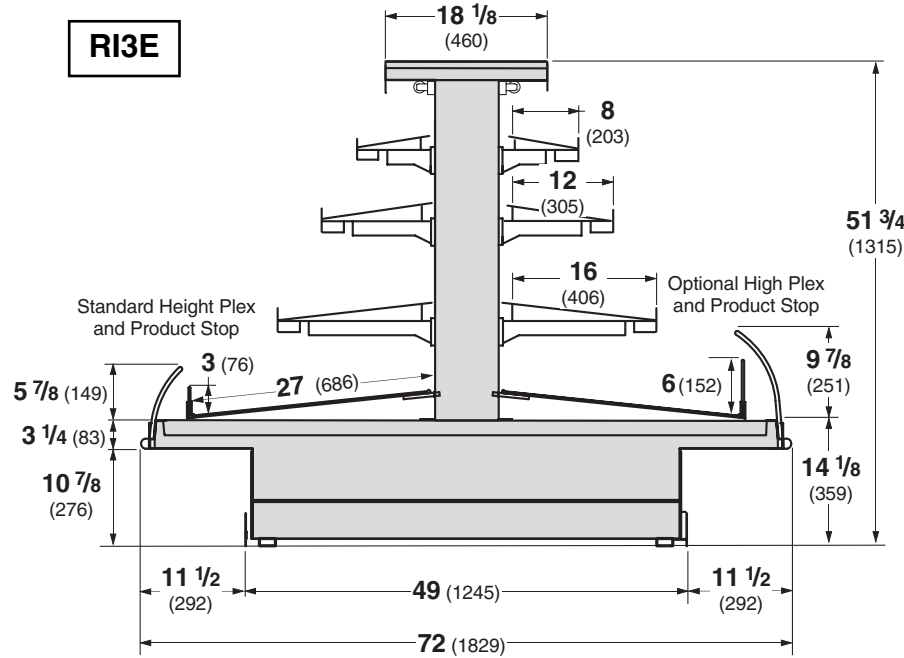


	8 ft	10 ft	12 ft
General			
(A) Overall Case Length	96 (2438)	120 (3048)	144 (3658)
(B) Base Length	86 1/2 (2197)	110 1/2 (2807)	134 1/2 (3416)
Overall Case Length	96 (2438)	120 (3048)	144 (3658)
Maximum O/S dimension of case back to front (includes bumper)	72 (1829)	72 (1829)	72 (1829)
Front of splashguard to O/S edge of front base rail	1 5/8 (41)	1 5/8 (41)	1 5/8 (41)
Front of case to O/S edge of front base rail	13 1/8 (333)	13 1/8 (333)	13 1/8 (333)
Back of case to O/S edge of front base rail	58 7/8 (1495)	58 7/8 (1495)	58 7/8 (1495)
Width of base rail	1 7/8 (48)	1 7/8 (48)	1 7/8 (48)
(D) Length of Canopy	69 1/8 (1756)	93 1/8 (2365)	117 1/8 (2975)
Width of Canopy	18 1/8 (460)	18 1/8 (460)	18 1/8 (460)
Electrical Service (Electrical Field Wiring connection point)			
Center of Electrical service to O/S edge of front base rail	47 (1194)	47 (1194)	47 (1194)
Left end of case to center of field connection box	27 (686)	27 (686)	27 (686)
Right end of case to center of field connection box	69 (1753)	93 (2362)	117 (2972)
Waste Outlets ●			
(C) LH End of case to the center of waste outlet	81 (2057)	96 (2438)	96 7/8 (2461)
Center of front waste outlet to outside of front base rail	8 7/8 (225)	8 7/8 (225)	8 7/8 (225)
Center of back waste outlet to outside of front base rail	40 1/8 (1019)	40 1/8 (1019)	40 1/8 (1019)
Schedule 40 PVC drip pipe	1 1/2 (38)	1 1/2 (38)	11 1/2 (38)
Refrigeration Outlet ○			
LH end of case to center of refrigeration outlet	22 (559)	22 (559)	22 (559)
RH end of case to center of refrigeration outlet	74 (1880)	98 (2489)	122 (3099)

Multi-deck Island End, 4 Display Levels

RI3E
Delicatessen

Dimensions shown as inches and (mm).



REFRIGERATION DATA

Note: This data is based on store temperature and humidity that does not exceed 75°F and 55% R.H.

	RI3E
Discharge Air (°F)	27
Evaporator (°F)	20
Unit Sizing (°F)	18
Btu/hr/ft[±]	
LIT & UNLIT SHELVES	RI3E
Parallel	1820
Conventional	1985

[±]Optional energy efficient motors reduce the refrigeration load by 109 Btu/hr/ft.

DEFROST DATA

	RI3E
Frequency (hr)	4
Defrost Water (lb/ft/day)	12
<i>(± 15% based on case configuration and product loading).</i>	
OFFTIME	RI3E
Time Terminated (minutes)	20

ELECTRIC OR GAS Not Recommended

CONVENTIONAL CONTROLS

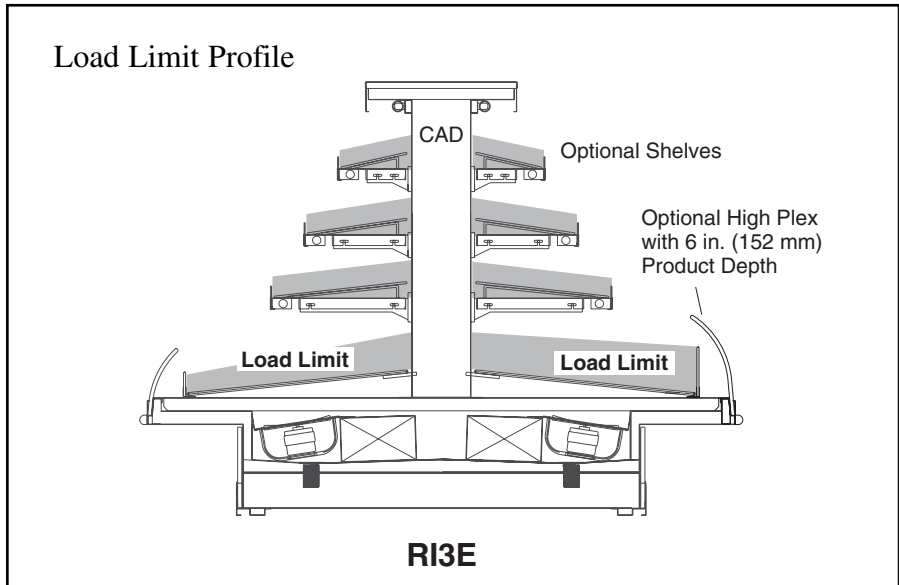
Low Pressure Backup Control	RI3E
CI/CO*	14°F / 4°F
Indoor Unit Only, Pressure Defrost Termination*	48°F
<i>*Use a Temperature Pressure Chart to determine PSIG conversions.</i>	

Estimated Charge **	RI3E
8 ft	1.7 lb 27 oz 0.8 kg
10 ft	2.1 lb 34 oz 1.0 kg
12 ft	2.5 lb 40 oz 1.1 kg

******This is an average for all refrigerant types. Actual refrigerant charge may vary by approximately half a pound.

NSF® Certification

This merchandiser is manufactured to meet ANSI/NSF® (National Sanitation Foundation) Standard #7 requirements for construction, materials & cleanability.



Cases may not function properly if they are loaded above load limits.

Air flow between the shelves, from the Center Air Discharge (CAD) to the return, must be maintained at all times for optimum operating efficiency and to prolong product shelf life. At no time should merchandisers be stocked beyond the load limits indicated.

RI3E

Delicatessen

Electrical Data

Number of Fans – 12W	8 ft	10 ft	12 ft						
	8	10	12						
				Amperes			Watts		
				8 ft	10 ft	12 ft	8 ft	10 ft	12 ft
Evaporator Fan									
120V	60Hz	Standard	5.20	6.50	7.80	400	500	600	
120V	50Hz	Standard	6.00	7.50	9.00	456	570	684	
230V	60Hz	Export	NA	NA	NA	NA	NA	NA	
230V	50Hz	Export	NA	NA	NA	NA	NA	NA	
120V	60Hz	Energy Efficient	2.40	3.00	3.60	144	180	216	
230V	60Hz	Energy Efficient	NA	NA	NA	NA	NA	NA	
Anti-sweat Heaters									
120V	60Hz	Standard	0.70	0.70	0.90	84	84	108	
230V	50Hz	Export	NA	NA	NA	NA	NA	NA	
Minimum Circuit Ampacity (MCA)									
120V	60Hz	Standard	6.57	7.87	9.50				
120V	50Hz	Standard	6.81	8.31	9.98				
230V	60Hz	Export	NA	NA	NA				
230V	50Hz	Export	NA	NA	NA				
120V	60Hz	Energy Efficient	3.21	3.81	4.58				
230V	60Hz	Energy Efficient	NA	NA	NA				
Maximum Over Current Protection 120V			20	20	20				
Maximum Over Current Protection 230V			NA	NA	NA				
Standard Lighting									
1 Row Canopy			0.70	0.95	1.23	84	114	148	
Optional Lighting									
1 Row of Ledge			1.33	1.67	2.00	160	200	240	
Shelf Lighting									
1 Row of Shelves			0.84	1.09	1.37	100	130	164	
2 Rows of Shelves			1.68	2.18	2.74	200	260	328	
3 Rows of Shelves			2.51	3.26	4.11	301	391	493	

115V Lighting Circuit Total = Standard Lighting + Total Optional Lighting + Optional Shelf Lighting

Product Data

RI3E8

<i>Recommended Usable Cube</i> ¹ (Cu Ft/Case)	54.31 ft ³ /case (1.54 m ³ /case)
<i>AHRI Total Display Area</i> ² (Sq Ft/Case)	51.86 ft ² /case (4.82 m ² /case)
<i>Shelf Area</i> ³ (Sq Ft/Case)	85.76 ft ² /case (7.97 m ² /case)

RI3E10

<i>Recommended Usable Cube</i> ¹ (Cu Ft/Case)	67.89 ft ³ /case (1.92 m ³ /case)
<i>AHRI Total Display Area</i> ² (Sq Ft/Case)	64.83 ft ² /case (6.02 m ² /case)
<i>Shelf Area</i> ³ (Sq Ft/Case)	107.20 ft ² /case (9.96 m ² /case)

RI3E12

<i>Recommended Usable Cube</i> ¹ (Cu Ft/Case)	81.47 ft ³ /case (2.31 m ³ /case)
<i>AHRI Total Display Area</i> ² (Sq Ft/Case)	77.80 ft ² /case (7.23 m ² /case)
<i>Shelf Area</i> ³ (Sq Ft/Case)	128.64 ft ² /case (11.95 m ² /case)

- ¹ AHRI Refrigerated Volume less shelving and other unusable space: Refrigerated Volume / Unit of Length, ft³/ft [m³/m]
² Computed using AHRI 1200 standard methodology: Total Display Area, ft² [m²] / Unit of Length, ft [m]
³ Shelf surface area is composed of bottom deck plus standard shelf complement, as shown in the Hussmann *Product Reference Guide*. The standard shelf complement for this model is (1) row of 8-inch shelf, (1) row of 12-inch shelf, (1) row of 16-inch shelf.

ESTIMATED SHIPPING WEIGHT ⁴

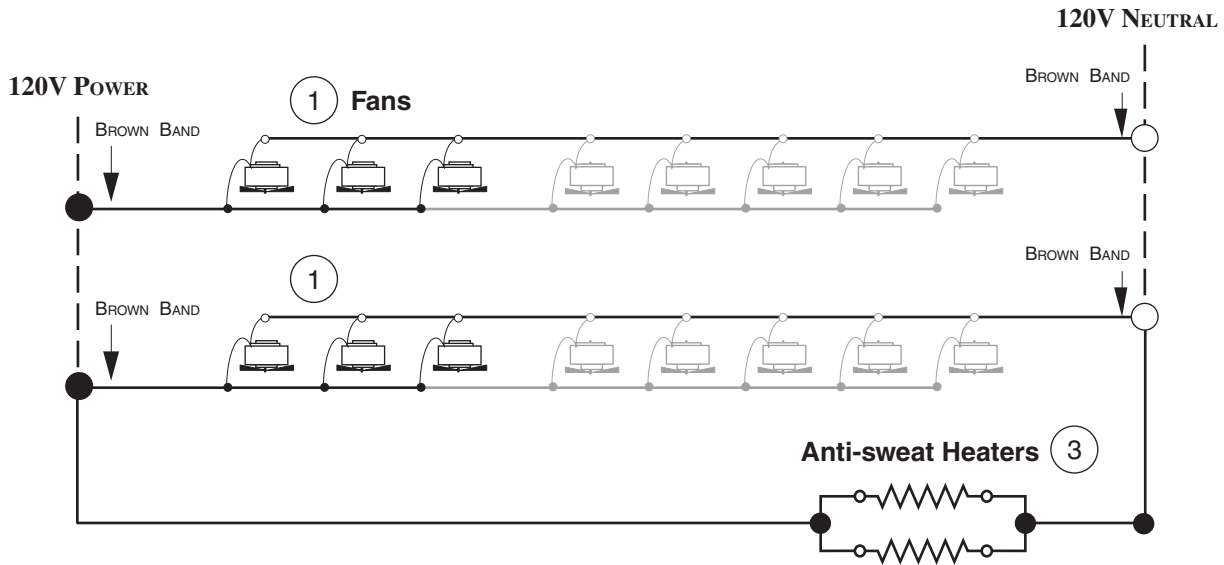
Case	<i>8 ft</i>	<i>10 ft</i>	<i>12 ft</i>	<i>End</i>
lb (kg)	1200 (544)	1400 (635)	1600 (726)	NA

⁴ Actual weights will vary according to optional kits included.

Fan Wiring Offtime Defrost

6, 8, 10, 14 & 16 Fans

- 8 ft — 6 Fans
- 10 ft — 8 Fans
- 12 ft — 10 Fans
- 14 ft — 14 Fans
- 16 ft — 16 Fans



Refrigeration Thermostat



WARNING

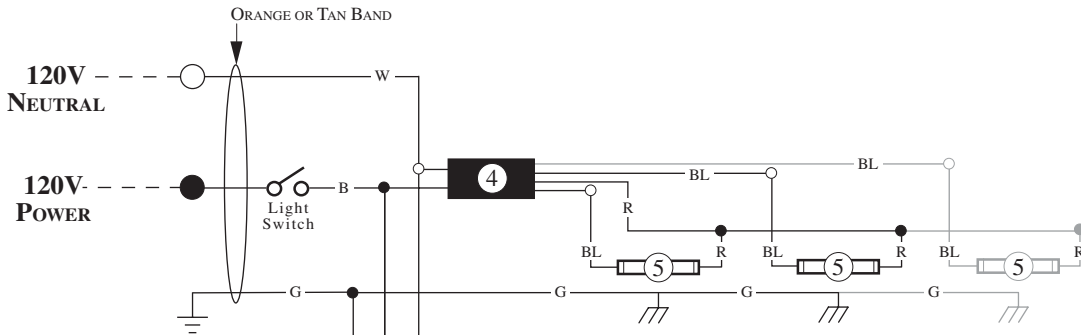
All components must have mechanical ground, and the merchandiser must be grounded.

CIRCLED NUMBERS = PARTS LIST ITEM NUMBERS

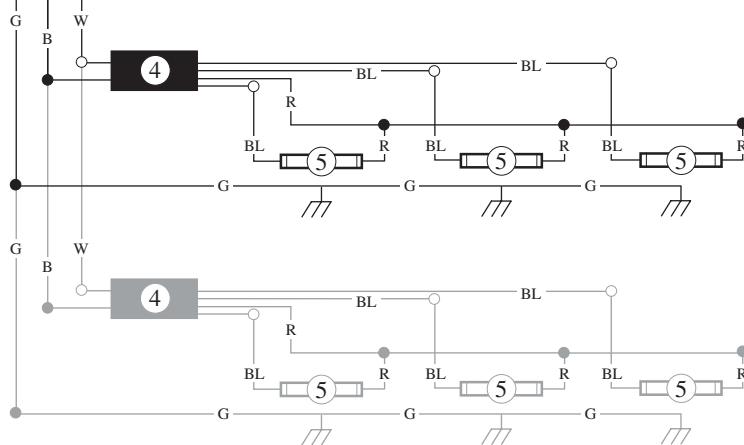
R = Red Y = Yellow G = Green BL = Blue B = Black W = White

● = 120V POWER ○ = 120V NEUTRAL ⊥ = FIELD GROUND ≡ = CASE GROUND

Standard Lighting — 1 Row Canopy



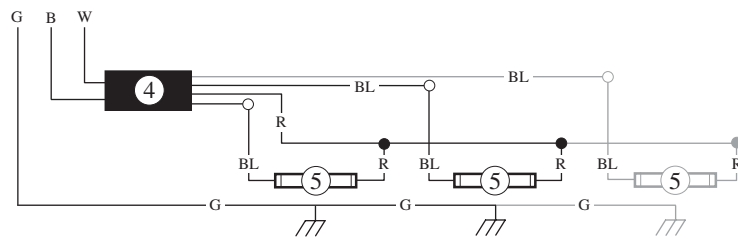
Lighted Shelf Wiring



Typical Shelf Ballast Wiring

Maximum lamps per ballast is three (3).
 Different shelf configurations and different case lengths will have more shelf ballasts.

Optional Ledge Light Circuit



WARNING

All components must have mechanical ground, and the merchandiser must be grounded.

CIRCLED NUMBERS = PARTS LIST ITEM NUMBERS

R = Red Y = Yellow G = Green BL = Blue B = Black W = White

● = 120V POWER ○ = 120V NEUTRAL ⏏ = FIELD GROUND ⏏ = CASE GROUND