

We reserve the right to change or revise specifications and product design in connection with any feature of our products. Such changes do not entitle the buyer to corresponding changes, improvements, additions or replacements for equipment previously sold or shipped.

| Item | Part # | Description | Wiring Item # | Item | Part # | Description | Wiring Item # |
|---------------------------------------|--|---|---------------|---------------------------------|-----------------------------------|----------------------|---------------|
| FAN ASSEMBLIES AND THERMOSTATS | | | | HEATERS | | | |
| 8 Ft, 10 Ft & 12 Ft | | | | C. Anti-Sweat Heater (3) | | | |
| A. | 12W Standard | Fan Assembly | (1) | 0487122 | 8 ft (HE.4851033) | | |
| | 0047000 | Fan Motor, Evaporator (MO.4410103) | | 0487123 | 8 ft (HE.4851034) | | |
| | 0141070 | Fan Blade (FB.0141070) (8 ft & 10 ft only) embossing toward motor | | 0487124 | 10 ft (HE.4851035) | | |
| | 0407532 | Fan Blade (FB.4780619) (12 ft only) embossing toward motor | | 0487125 | 10 ft (HE.4851036) | | |
| B. | Optional Adjustable Refrigeration Thermostat | | (2) | 0487126 | 12 ft (HE.4851037) | | |
| | 0448347 | (CT.4481631) | | 0487127 | 12 ft (HE.4851038) | | |
| | | | | LAMPS AND BALLASTS | | | |
| | | | | D. | Ballast, Electronic | | (4) |
| | | | | | 0355398 | 3 Lamps (BA.4480118) | |
| | | | | | 0355716 | 2 Lamps (BA.0355716) | |
| | | | | E. | Fluorescent Lamp | | (5) |
| | | | | | <i>Replace with like fixtures</i> | | |

Note: Revision C revises refrigeration data on page 3 and updates electrical data on page 4.



Engineering Plan Views

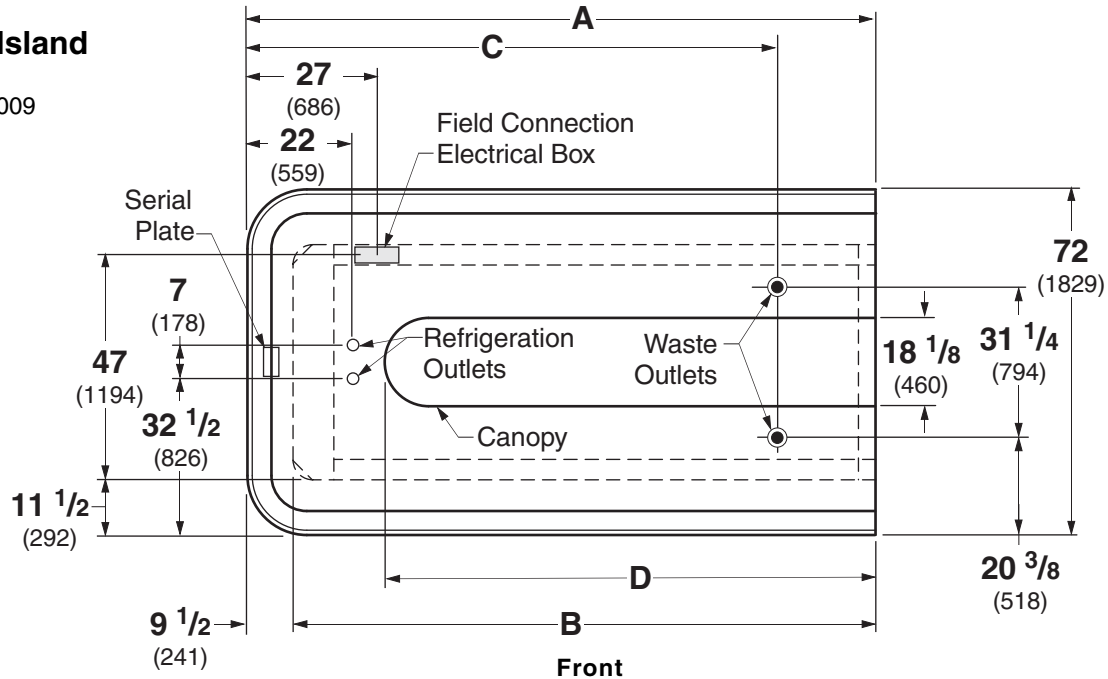
PHYSICAL DATA

| | |
|---------------------------------|-------|
| Merchandiser Drip Pipe (in.) | 1 1/2 |
| Merchandiser Liquid Line (in.) | 3/8 |
| Merchandiser Suction Line (in.) | 5/8 |

Dimensions shown as inches and (mm).

RI2E Island

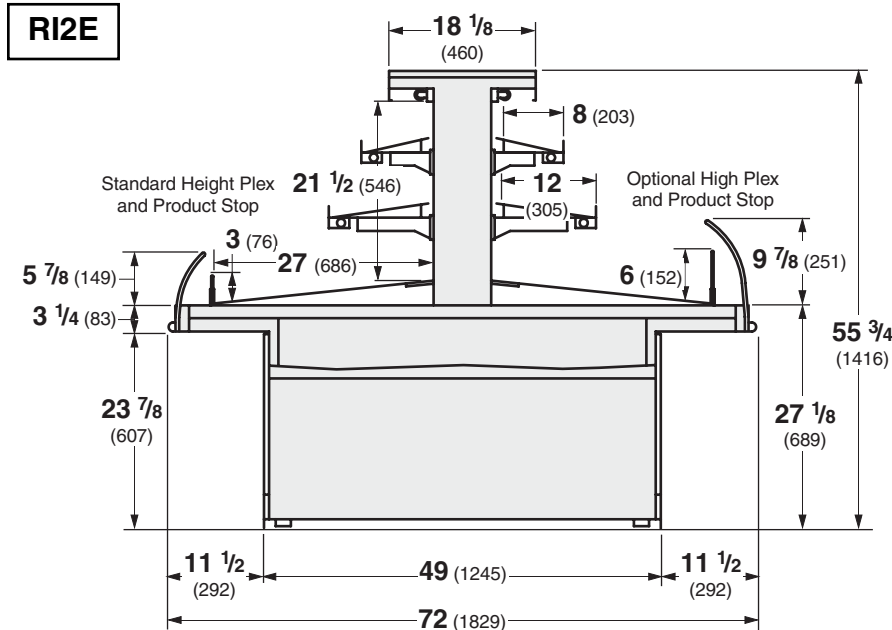
08-2009



| | 8 ft | 10 ft | 12 ft |
|---|---------------|----------------|----------------|
| General | | | |
| (A) Overall Case Length | 96 (2438) | 120 (3048) | 144 (3658) |
| (B) Base Length | 86 1/2 (2197) | 110 1/2 (2807) | 134 1/2 (3416) |
| Maximum O/S dimension of case back to front (includes bumper) | 72 (1829) | 72 (1829) | 72 (1829) |
| Front of splashguard to O/S edge of front base rail | 1 5/8 (41) | 1 5/8 (41) | 1 5/8 (41) |
| Front of case to O/S edge of front base rail | 13 1/8 (333) | 13 1/8 (333) | 13 1/8 (333) |
| Back of case to O/S edge of front base rail | 58 7/8 (1495) | 58 7/8 (1495) | 58 7/8 (1495) |
| Width of base rail | 1 7/8 (48) | 1 7/8 (48) | 1 7/8 (48) |
| (D) Length of Canopy | 69 1/8 (1756) | 93 1/8 (2365) | 117 1/8 (2975) |
| Width of Canopy | 18 1/8 (460) | 18 1/8 (460) | 18 1/8 (460) |
| Electrical Service <i>Electrical Field Wiring connection point)</i> | | | |
| Center of Electrical service to O/S edge of front base rail | 47 (1194) | 47 (1194) | 47 (1194) |
| Left end of case to center of field connection box | 27 (686) | 27 (686) | 27 (686) |
| Right end of case to center of field connection box | 69 (1753) | 93 (2362) | 117 (2972) |
| Waste Outlets | | | |
| (C) LH End of case to the center of waste outlet | 81 (2057) | 96 (2438) | 96 7/8 (2461) |
| Center of front waste outlet to outside of front base rail | 8 7/8 (225) | 8 7/8 (225) | 8 7/8 (225) |
| Center of back waste outlet to outside of front base rail | 40 1/8 (1019) | 40 1/8 (1019) | 40 1/8 (1019) |
| Schedule 40 PVC drip pipe | 1 1/2 (38) | 1 1/2 (38) | 1 1/2 (38) |
| Refrigeration Outlet | | | |
| LH end of case to center of refrigeration outlet | 22 (559) | 22 (559) | 22 (559) |
| RH end of case to center of refrigeration outlet | 74 (1880) | 98 (2489) | 122 (3099) |

RI2E
Delicatessen

Dimensions shown as inches and (mm).



REFRIGERATION DATA

Note: This data is based on store temperature and humidity that does not exceed 75°F and 55% R.H.

| | |
|--------------------------------|-------------|
| | RI2E |
| Discharge Air (°F) | 27 |
| Evaporator (°F) | 20 |
| Unit Sizing (°F) | 18 |
| | |
| Btu/hr/ft[±] | |
| LIT & UNLIT SHELVES | RI2E |
| Parallel | 1444 |
| Conventional | 1575 |

DEFROST DATA

| | |
|---|----|
| RI2E | |
| Frequency (hr) | 4 |
| Defrost Water (lb/ft/day) | 10 |
| <small>(± 15% based on case configuration and product loading).</small> | |

NSF® Certification

This merchandiser is manufactured to meet ANSI/NSF® (National Sanitation Foundation) Standard #7 requirements for construction, materials & cleanability.

| | |
|----------------------------------|-------------|
| OFFTIME | RI2E |
| Time Terminated (minutes) | 20 |

ELECTRIC OR GAS Not Recommended

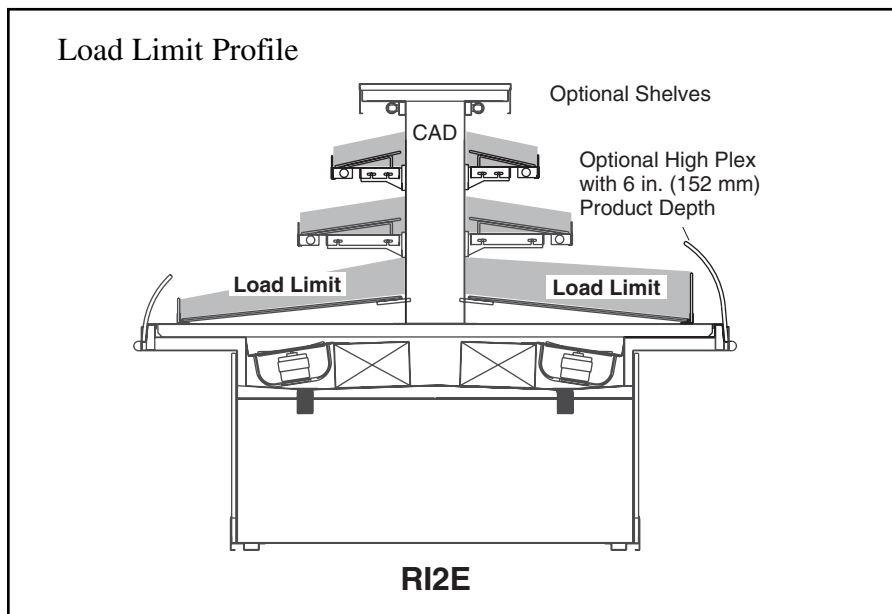
CONVENTIONAL CONTROLS

| | |
|--|-------------|
| Low Pressure Backup Control | RI2E |
| CI/CO* | 14°F / 4°F |
| Indoor Unit Only, Pressure Defrost Termination* | 48°F |

*Use a Temperature Pressure Chart to determine PSIG conversions.

| | |
|----------------------------|---------------------|
| Estimated Charge ** | RI2E |
| 8 ft | 1.7 lb 27 oz 0.8 kg |
| 10 ft | 2.1 lb 34 oz 1.0 kg |
| 12 ft | 2.5 lb 40 oz 1.1 kg |

**This is an average for all refrigerant types. Actual refrigerant charge may vary by approximately half a pound.



Cases may not function properly if they are loaded above load limits.

Air flow between the shelves, from the Center Air Discharge (CAD) to the return, must be maintained at all times for optimum operating efficiency and to prolong product shelf life. At no time should merchandisers be stocked beyond the load limits indicated.

RI2E

Delicatessen

Electrical Data

| | 8 ft | 10 ft | 12 ft | | | |
|---|-------------|----------------|--------------|-------------|--------------|--------------|
| Number of Fans – 12W | 6 | 8 | 10 | | | |
| | | Amperes | | | Watts | |
| | 8 ft | 10 ft | 12 ft | 8 ft | 10 ft | 12 ft |
| Evaporator Fan | | | | | | |
| 120V 60Hz Standard | 3.90 | 5.20 | 6.50 | 300 | 400 | 500 |
| 120V 50Hz Standard | 4.50 | 6.00 | 7.50 | 342 | 456 | 570 |
| 230V 60Hz Export | NA | NA | NA | NA | NA | NA |
| 230V 50Hz Export | NA | NA | NA | NA | NA | NA |
| 120V 60Hz Energy Efficient | <u>NA</u> | <u>NA</u> | <u>NA</u> | <u>NA</u> | <u>NA</u> | <u>NA</u> |
| 230V 60Hz Energy Efficient | NA | NA | NA | NA | NA | NA |
| Anti-sweat Heaters | | | | | | |
| 120V 60Hz Standard | 0.70 | 0.70 | 0.90 | 84 | 84 | 108 |
| 230V 50Hz Export | NA | NA | NA | NA | NA | NA |
| Minimum Circuit Ampacity (MCA) | | | | | | |
| 120V 60Hz Standard | 4.80 | 6.30 | 7.60 | | | |
| 120V 50Hz Standard | 5.07 | 6.57 | 8.17 | | | |
| 230V 60Hz Export | NA | NA | NA | | | |
| 230V 50Hz Export | NA | NA | NA | | | |
| 120V 60Hz Energy Efficient | <u>NA</u> | <u>NA</u> | <u>NA</u> | | | |
| 230V 60Hz Energy Efficient | NA | NA | NA | | | |
| Maximum Over Current Protection 120V | 20 | 20 | 20 | | | |
| Maximum Over Current Protection 230V | NA | NA | NA | | | |
| Standard Lighting | | | | | | |
| 1 Row Canopy | 0.70 | 0.95 | 1.23 | 84 | 114 | 148 |
| Optional Lighting | | | | | | |
| 1 Row of Ledge | 1.33 | 1.67 | 2.00 | 160 | 200 | 240 |
| Shelf Lighting | | | | | | |
| 1 Row of Shelves | 0.84 | 1.09 | 1.38 | 101 | 131 | 165 |
| 2 Rows of Shelves | 1.68 | 2.18 | 2.75 | 202 | 262 | 330 |

115V Lighting Circuit Total = Standard Lighting + Total Optional Lighting + Optional Shelf Lighting

Product Data

RI2E8

| | |
|--|---|
| <i>Recommended Usable Cube</i> ¹ (Cu Ft/Case) | 34.15 ft ³ /case (0.97 m ³ /case) |
| <i>AHRI Total Display Area</i> ² (Sq Ft/Case) | 40.10 ft ² /case (3.73 m ² /case) |
| <i>Shelf Area</i> ³ (Sq Ft/Case) | 66.64 ft ² /case (6.19 m ² /case) |

RI2E10

| | |
|--|---|
| <i>Recommended Usable Cube</i> ¹ (Cu Ft/Case) | 42.69 ft ³ /case (1.21 m ³ /case) |
| <i>AHRI Total Display Area</i> ² (Sq Ft/Case) | 50.13 ft ² /case (4.66 m ² /case) |
| <i>Shelf Area</i> ³ (Sq Ft/Case) | 83.30 ft ² /case (7.74 m ² /case) |

RI2E12

| | |
|--|---|
| <i>Recommended Usable Cube</i> ¹ (Cu Ft/Case) | 51.23 ft ³ /case (1.45 m ³ /case) |
| <i>AHRI Total Display Area</i> ² (Sq Ft/Case) | 60.15 ft ² /case (5.59 m ² /case) |
| <i>Shelf Area</i> ³ (Sq Ft/Case) | 99.96 ft ² /case (9.29 m ² /case) |

¹ AHRI Refrigerated Volume less shelving and other unusable space: Refrigerated Volume / Unit of Length, ft³/ft [m³/m]

² Computed using AHRI 1200 standard methodology: Total Display Area, ft² [m²] / Unit of Length, ft [m]

³ Shelf surface area is composed of bottom deck plus standard shelf complement, as shown in the Hussmann *Product Reference Guide*. The standard shelf complement for this model is (1) row of 8-inch shelf, (1) row of 12-inch shelf.

ESTIMATED SHIPPING WEIGHT ⁴

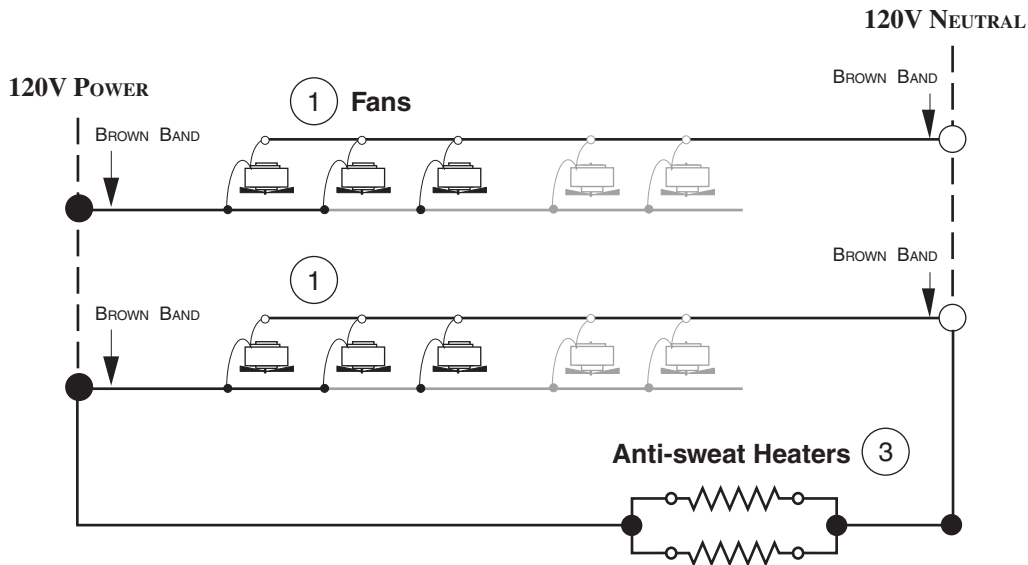
| Case | <i>8 ft</i> | <i>10 ft</i> | <i>12 ft</i> | <i>End</i> |
|----------------|-------------|--------------|--------------|------------|
| lb (kg) | 1100 (499) | 1300 (590) | 1400 (635) | NA |

⁴ Actual weights will vary according to optional kits included.

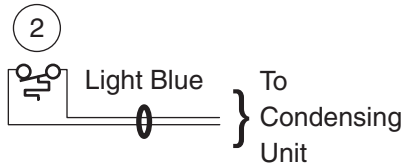
Fan Wiring Offtime Defrost

6, 8 & 10 Fans

- 8 ft — 6 Fans
- 10 ft — 8 Fans
- 12 ft — 10 Fans



Refrigeration Thermostat



WARNING

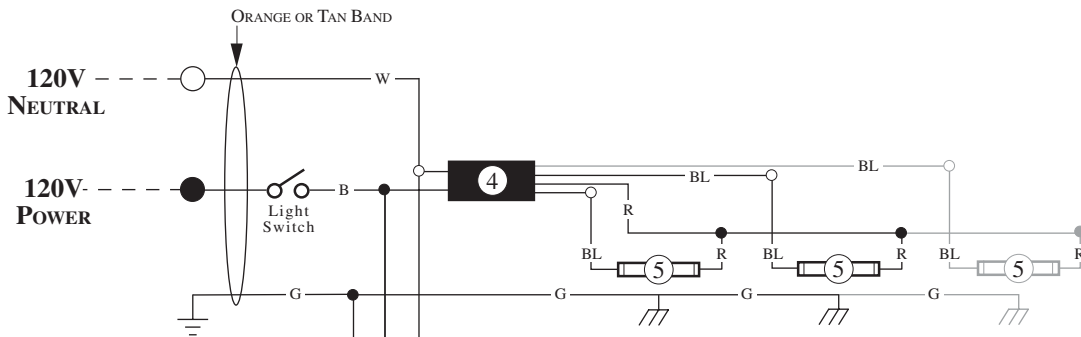
All components must have mechanical ground, and the merchandiser must be grounded.

CIRCLED NUMBERS = PARTS LIST ITEM NUMBERS

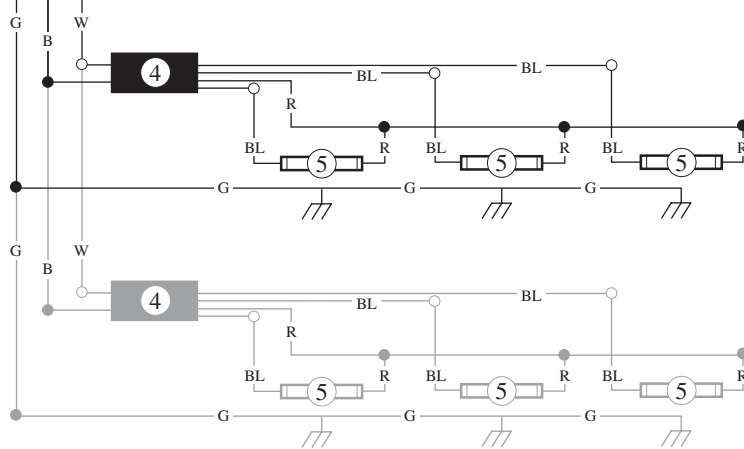
R = Red Y = Yellow G = Green BL = Blue B = Black W = White

● = 120V POWER ○ = 120V NEUTRAL ⊥ = FIELD GROUND ≡ = CASE GROUND

Standard Lighting — 1 Row Canopy



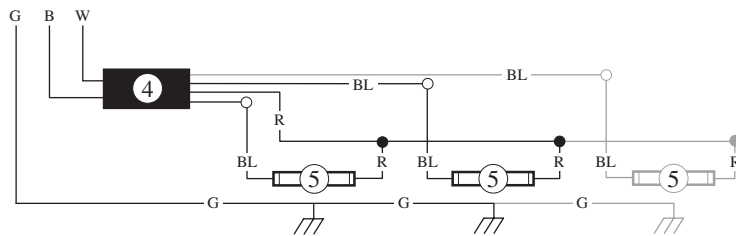
Lighted Shelf Wiring



Typical Shelf Ballast Wiring

Maximum lamps per ballast is three (3).
 Different shelf configurations and different case lengths will have more shelf ballasts.

Optional Ledge Light Circuit



WARNING

All components must have mechanical ground, and the merchandiser must be grounded.

CIRCLED NUMBERS = PARTS LIST ITEM NUMBERS

R = Red Y = Yellow G = Green BL = Blue B = Black W = White

● = 120V POWER ○ = 120V NEUTRAL ⏏ = FIELD GROUND ⏏ = CASE GROUND