

We reserve the right to change or revise specifications and product design in connection with any feature of our products. Such changes do not entitle the buyer to corresponding changes, improvements, additions or replacements for equipment previously sold or shipped.

Item	Part #	Description	Wiring Item #	Item	Part #	Description	Wiring Item #
FAN ASSEMBLIES AND THERMOSTATS				HEATERS			
10 Ft, 14 Ft & 16 Ft				C. Anti-Sweat Heater (3)			
A.	12W Standard	Fan Assembly	(1)	0487118	10 ft (HE.4850668)		
	0047000	Fan Motor, Evaporator (MO.4410103)		0487120	14 ft (HE.4850835)		
	0407532	Fan Blade (10 ft & 14 only) (FB.4780619)		0487121	16 ft (HE.4850836)		
		embossing toward motor		LAMPS AND BALLASTS			
	0506563	Fan Blade (16 ft only) (FB.4780811)		D.	Ballast, Electronic		(4)
		embossing toward motor		0355398	3 Lamps (BA.4480118)		
				0355716	2 Lamps (BA.0355716)		
	12W Energy Efficient	Fan Assembly	(1)	0447740	(BA.4481278)		
	0477655	Fan Motor, Evaporator (MO.4410546)		E.	Fluorescent Lamp		(5)
	0407532	Fan Blade (10 ft & 14 only) (FB.4780619)			<i>Replace with like fixtures</i>		
		embossing toward motor					
	0506563	Fan Blade (16 ft only) (FB.4780811)					
		embossing toward motor					
B.	Optional Adjustable Refrigeration Thermostat		(2)				
	0448347	(CT.4481631)					

Note: Revision B removes 8 ft and 12 ft data throughout; updates parts list, plan view, electrical data and wiring diagrams; adds page 5. Changes are marked with vertical bar in margin or are circled.

Engineering Plan Views

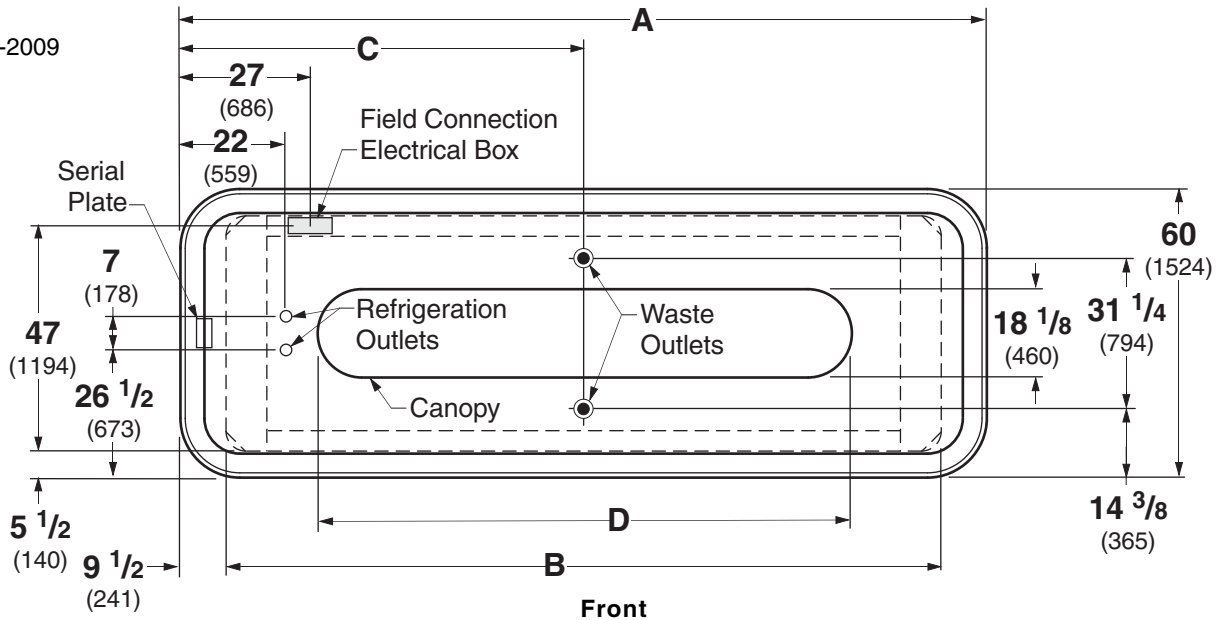
Dimensions shown as in. and (mm).




PHYSICAL DATA

Merchandiser Drip Pipe (in.)	1 1/2
Merchandiser Liquid Line (in.)	3/8
Merchandiser Suction Line (in.)	5/8

RI3N Island

08-2009

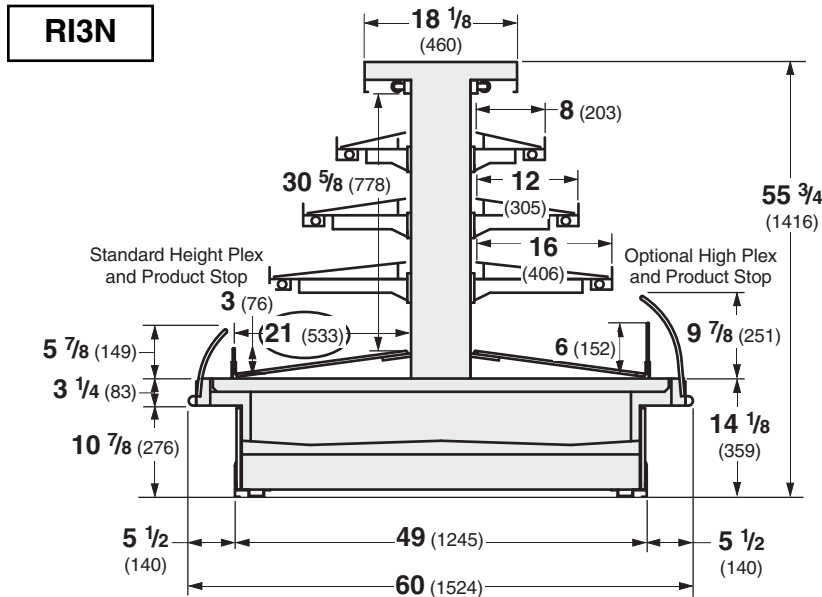


	10 ft	14 ft	16 ft
General			
(A) Overall Case Length	120 (3048)	168 (4267)	192 (4877)
(B) Base Length	101 (2565)	149 (3785)	173 (4394)
Maximum O/S dimension of case back to front (includes bumper)	60 (1524)	60 (1524)	60 (1524)
Front of splashguard to O/S edge of front base rail	1 5/8 (41)	1 5/8 (41)	1 5/8 (41)
Front of case to O/S edge of front base rail	13 1/8 (333)	13 1/8 (333)	13 1/8 (333)
Back of case to O/S edge of front base rail	58 7/8 (1495)	58 7/8 (1495)	58 7/8 (1495)
Width of base rail	1 7/8 (48)	1 7/8 (48)	1 7/8 (48)
(D) Length of Canopy	66 1/8 (1680)	114 1/8 (2899)	138 1/8 (3508)
Width of Canopy	18 1/8 (460)	18 1/8 (460)	18 1/8 (460)
Electrical Service  (Electrical Field Wiring connection point)			
Center of Electrical service to O/S edge of front base rail	47 (1194)	47 (1194)	47 (1194)
Left end of case to center of field connection box	27 (686)	27 (686)	27 (686)
Right end of case to center of field connection box	93 (2362)	141 (3581)	165 (4191)
Waste Outlets 			
(C) LH End of case to the center of waste outlet	42 (1067)	84 (2134)	96 (2438)
Center of front waste outlet to outside of front base rail	8 7/8 (225)	8 7/8 (225)	8 7/8 (225)
Center of back waste outlet to outside of front base rail	40 1/8 (1019)	40 1/8 (1019)	40 1/8 (1019)
Schedule 40 PVC drip pipe	1 1/2 (38)	1 1/2 (38)	1 1/2 (38)
Refrigeration Outlet 			
LH end of case to center of refrigeration outlet	22 (559)	22 (559)	22 (559)
RH end of case to center of refrigeration outlet	98 (2489)	146 (3708)	170 (4318)

Multi-deck Island, 4 Display Levels, Narrow Footprint

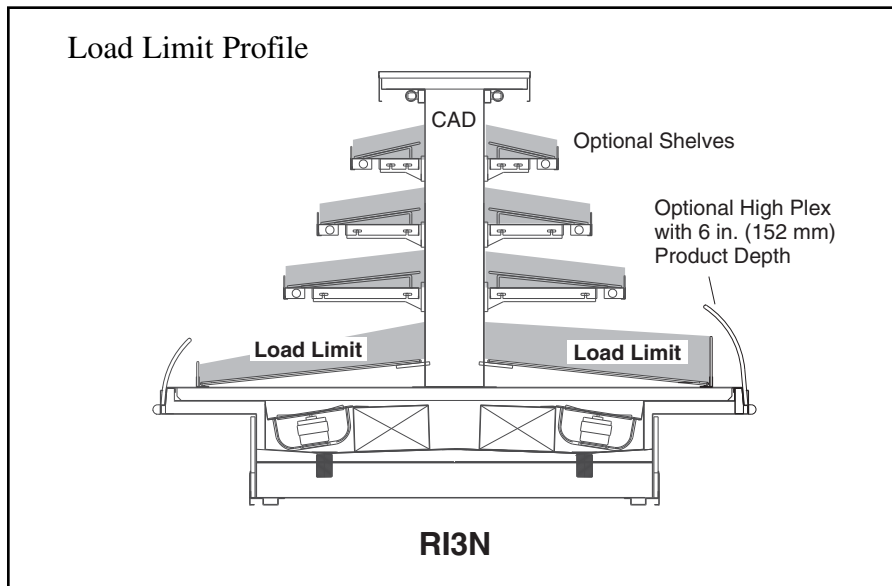
RI3N
Delicatessen

Dimensions shown as in. and (mm).



NSF® Certification

This merchandiser is manufactured to meet ANSI/NSF® (National Sanitation Foundation) Standard #7 requirements for construction, materials & cleanability.



Cases may not function properly if they are loaded above load limits.

Air flow between the shelves, from the Center Air Discharge (CAD) to the return, must be maintained at all times for optimum operating efficiency and to prolong product shelf life. At no time should merchandisers be stocked beyond the load limits indicated.

REFRIGERATION DATA

Note: This data is based on store temperature and humidity that does not exceed 75°F and 55% R.H.

	RI3N
Discharge Air (°F)	27
Evaporator (°F)	20
Unit Sizing (°F)	18

Btu/hr/ft

LIT & UNLIT SHELVES	RI3N
Parallel	1820
Conventional	1985

DEFROST DATA

	RI3N
Frequency (hr)	4
Defrost Water (lb/ft/day)	12
<i>(± 15% based on case configuration and product loading).</i>	

OFFTIME	RI3N
Time Terminated (minutes)	20

ELECTRIC OR GAS Not Recommended

CONVENTIONAL CONTROLS

Low Pressure Backup Control	RI3N
CI/CO*	14°F / 4°F
Indoor Unit Only, Pressure Defrost Termination*	48°F

*Use a Temperature Pressure Chart to determine PSIG conversions.

Estimated Charge (lb)**	RI3N
10 ft	2.1
14 ft	3.1
16 ft	3.7

**This is an average for all refrigerant types. Actual refrigerant charge may vary by approximately half a pound.

RI3N

Delicatessen

Electrical Data

	10 ft	14 ft	16 ft			
Number of Fans – 12W	8	14	16			
	Amperes			Watts		
	10 ft	14 ft	16 ft	10 ft	14 ft	16 ft
Evaporator Fan						
120V 60Hz Standard	5.20	9.10	10.40	400	700	800
120V 50Hz Standard	6.00	10.50	12.00	456	798	912
230V 60Hz Export	NA	NA	NA	NA	NA	NA
230V 50Hz Export	NA	NA	NA	NA	NA	NA
120V 60Hz Energy Efficient	2.40	4.20	4.80	144	252	288
230V 60Hz Energy Efficient	NA	NA	NA	NA	NA	NA
Anti-sweat Heaters						
120V 60Hz Standard	0.70	1.10	1.30	84	132	156
230V 50Hz Export	NA	NA	NA	NA	NA	NA
Minimum Circuit Ampacity (MCA)						
120V 60Hz Standard	6.57	11.13	12.77			
120V 50Hz Standard	6.81	11.66	13.33			
230V 60Hz Export	NA	NA	NA			
230V 50Hz Export	NA	NA	NA			
120V 60Hz Energy Efficient	3.21	5.36	6.13			
230V 60Hz Energy Efficient	NA	NA	NA			
Maximum Over Current Protection 120V	20	20	20			
Maximum Over Current Protection 230V	NA	NA	NA			
Standard Lighting						
1 Row Canopy	0.53	1.07	1.37	64	128	164
Optional Lighting						
1 Row of Ledge	2.00	2.67	3.00	240	320	360
Shelf Lighting						
1 Row of Shelves	0.81	1.34	1.64	97	161	197
2 Rows of Shelves	1.62	2.68	3.28	194	322	394
3 Rows of Shelves	2.42	4.02	4.92	290	482	590

120V Lighting Circuit Total = Standard Lighting + Total Optional Lighting + Optional Shelf Lighting

Product Data

RI3N10

<i>Recommended Usable Cube</i> ¹ (Cu Ft/Case)	54.60 ft ³ /case (1.55 m ³ /case)
<i>ARI Total Display Area</i> ² (Sq Ft/Case)	58.17 ft ² /case (5.40 m ² /case)
<i>Shelf Area</i> ³ (Sq Ft/Case)	95.00 ft ² /case (8.83 m ² /case)

RI3N14

<i>Recommended Usable Cube</i> ¹ (Cu Ft/Case)	76.44 ft ³ /case (2.16 m ³ /case)
<i>ARI Total Display Area</i> ² (Sq Ft/Case)	81.44 ft ² /case (7.57 m ² /case)
<i>Shelf Area</i> ³ (Sq Ft/Case)	133.00 ft ² /case (12.36 m ² /case)

RI3N16

<i>Recommended Usable Cube</i> ¹ (Cu Ft/Case)	87.36 ft ³ /case (2.47 m ³ /case)
<i>ARI Total Display Area</i> ² (Sq Ft/Case)	93.07 ft ² /case (8.65 m ² /case)
<i>Shelf Area</i> ³ (Sq Ft/Case)	152.00 ft ² /case (14.12 m ² /case)

- ¹ ARI Refrigerated Volume less shelving and other unusable space: Refrigerated Volume / Unit of Length, ft³/ft [m³/m]
² Computed using ARI 1200 standard methodology: Total Display Area, ft² [m²] / Unit of Length, ft [m]
³ Shelf surface area is composed of bottom deck plus standard shelf complement, as shown in the Hussmann **Product Reference Guide**. The standard shelf complement for this model is (1) row of 8-inch shelf, (1) row of 12-inch shelf, (1) row of 16-inch shelf.

ESTIMATED SHIPPING WEIGHT ⁵

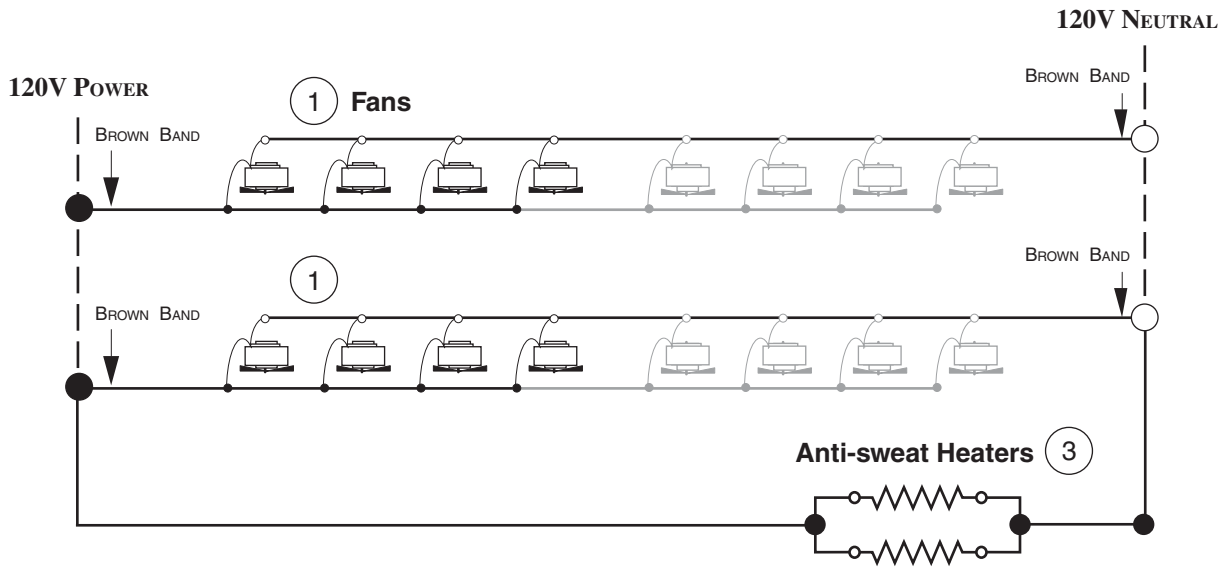
Case	<i>10 ft</i>	<i>14 ft</i>	<i>16 ft</i>
lb (kg)	1300 (590)	1800 (816)	2100 (953)

⁵ Actual weights will vary according to optional kits included.

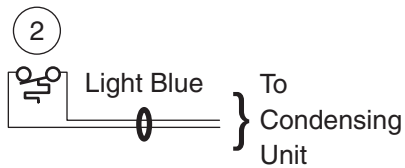
Fan Wiring Offtime Defrost

8, 14 & 16 Fans

- 10 ft — 8 Fans
- 14 ft — 14 Fans
- 16 ft — 16 Fans



Refrigeration Thermostat



WARNING

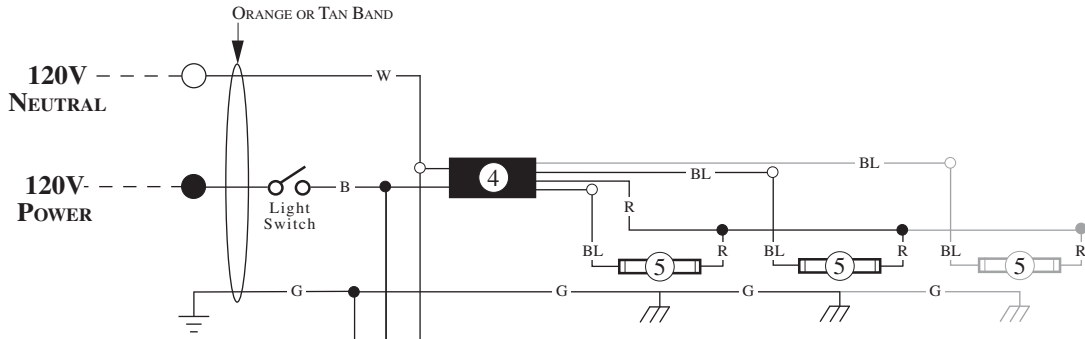
All components must have mechanical ground, and the merchandiser must be grounded.

CIRCLED NUMBERS = PARTS LIST ITEM NUMBERS

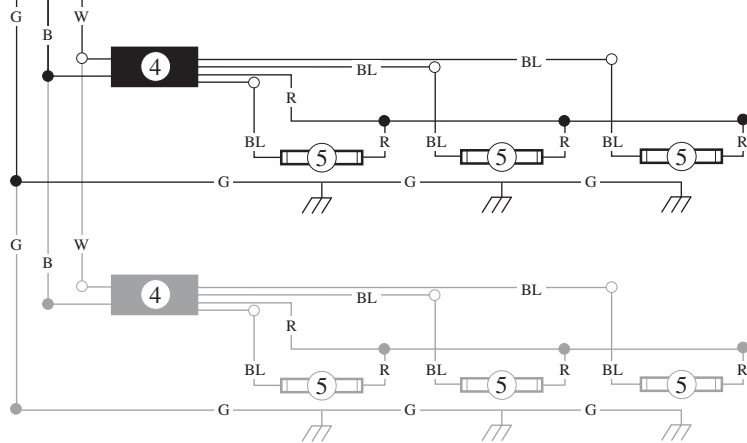
R = Red Y = Yellow G = Green BL = Blue B = Black W = White

● = 120V POWER ○ = 120V NEUTRAL ⊥ = FIELD GROUND ≡ = CASE GROUND

Standard Lighting — 1 Row Canopy



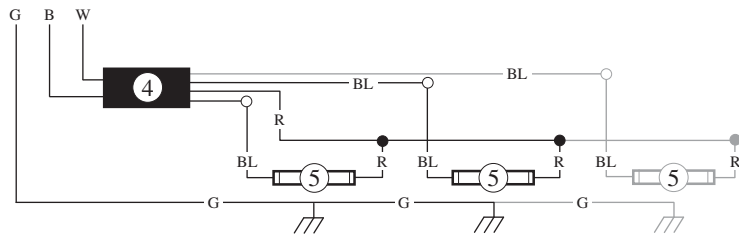
Lighted Shelf Wiring



Typical Shelf Ballast Wiring

Maximum lamps per ballast is three (3).
 Different shelf configurations and different case lengths will have more shelf ballasts.

Optional Ledge Light Circuit



WARNING

All components must have mechanical ground, and the merchandiser must be grounded.

CIRCLED NUMBERS = PARTS LIST ITEM NUMBERS

R = Red Y = Yellow G = Green BL = Blue B = Black W = White

● = 120V POWER ○ = 120V NEUTRAL ⊥ = FIELD GROUND ≡ = CASE GROUND