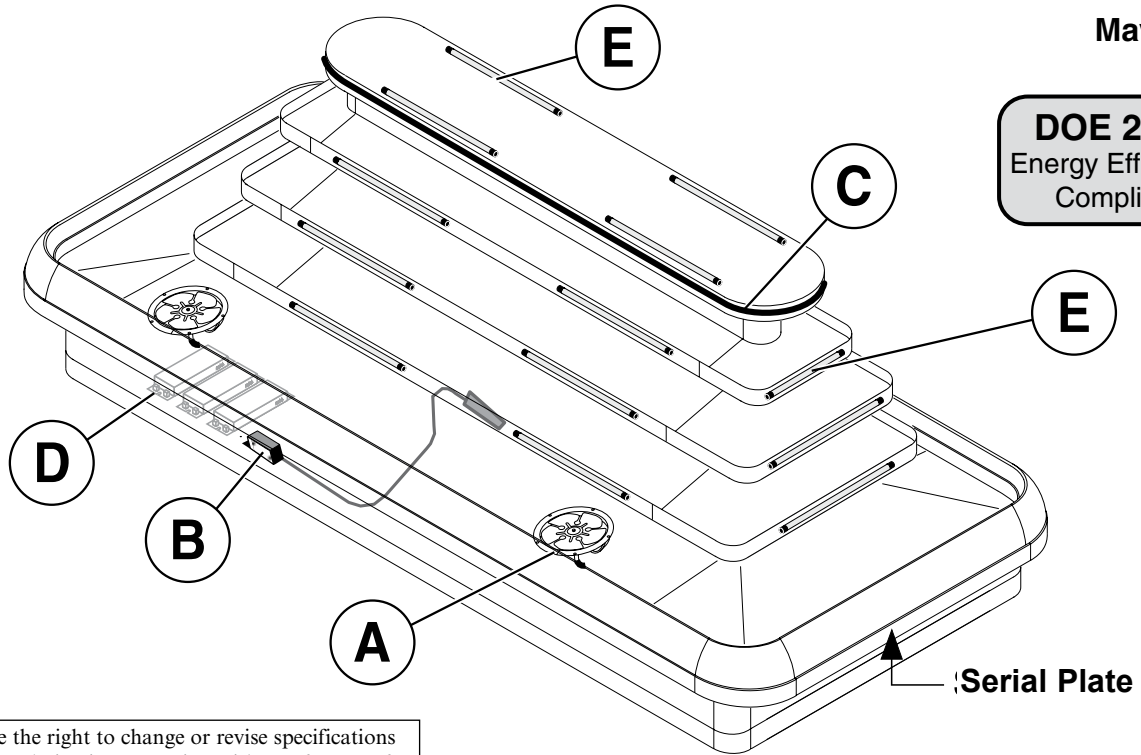


DOE 2012
 Energy Efficiency
 Compliant



We reserve the right to change or revise specifications and product design in connection with any feature of our products. Such changes do not entitle the buyer to corresponding changes, improvements, additions or replacements for equipment previously sold or shipped.

Item	Part #	Description	Wiring Item #	Item	Part #	Description	Wiring Item #
FAN ASSEMBLIES AND THERMOSTATS				HEATERS			
16 Ft				C.	Anti-Sweat Heater		(3)
A.	12W Standard Energy Efficient Fan Assembly (1)			0487121	16 ft (HE.4850836)		
	0477655	Fan Motor, Evaporator (MO.4410546)		LAMPS AND BALLASTS			
	0407532	Fan Blade (10 ft & 14 only) (FB.4780619)		D.	Ballast, Electronic		(4)
		embossing toward motor		0355398	3 Lamps (BA.4480118)		
	0506563	Fan Blade (16 ft only) (FB.4780811)		0355716	2 Lamps (BA.0355716)		
		embossing toward motor		0447740	(BA.4481278)		
B.	Optional Adjustable Refrigeration Thermostat			E.	Fluorescent Lamp		(5)
			(2)		<i>Replace with like fixtures</i>		
	0448347	(CT.4481631)					

Datasheet-Speciality RI3N

Note: Revision E removes 10 and 14 foot data. Other changes marked by bar, underline or circle.

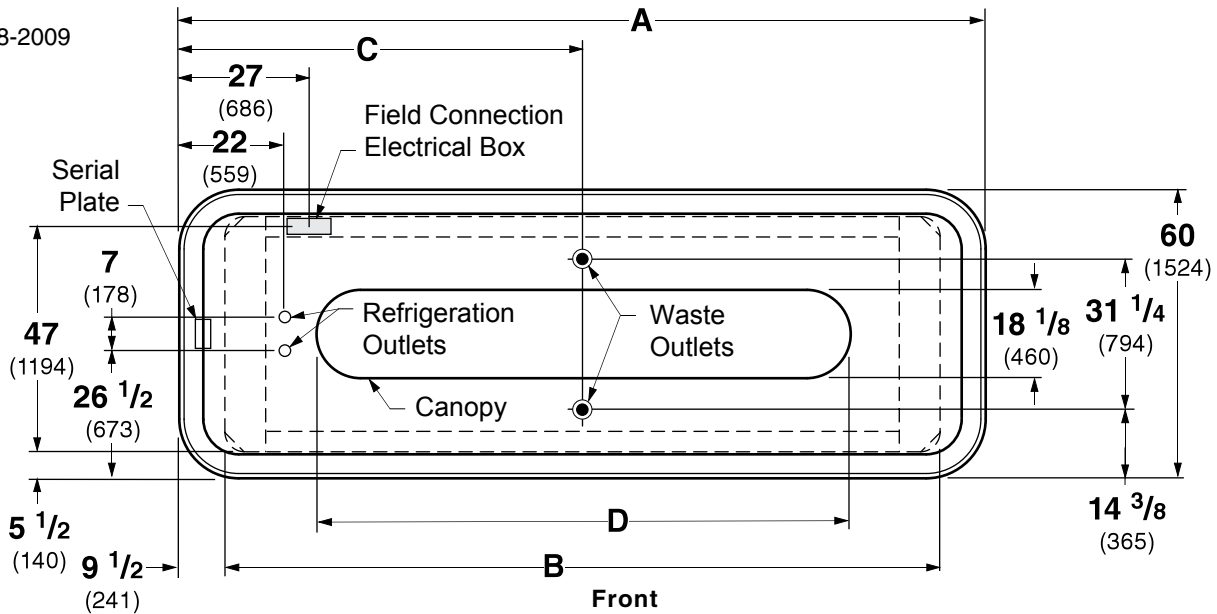
Engineering Plan Views

Dimensions shown as inches and (mm).

PHYSICAL DATA	
Merchandiser Drip Pipe (in.)	1 1/2
Merchandiser Liquid Line (in.)	3/8
Merchandiser Suction Line (in.)	5/8

RI3N Island

08-2009



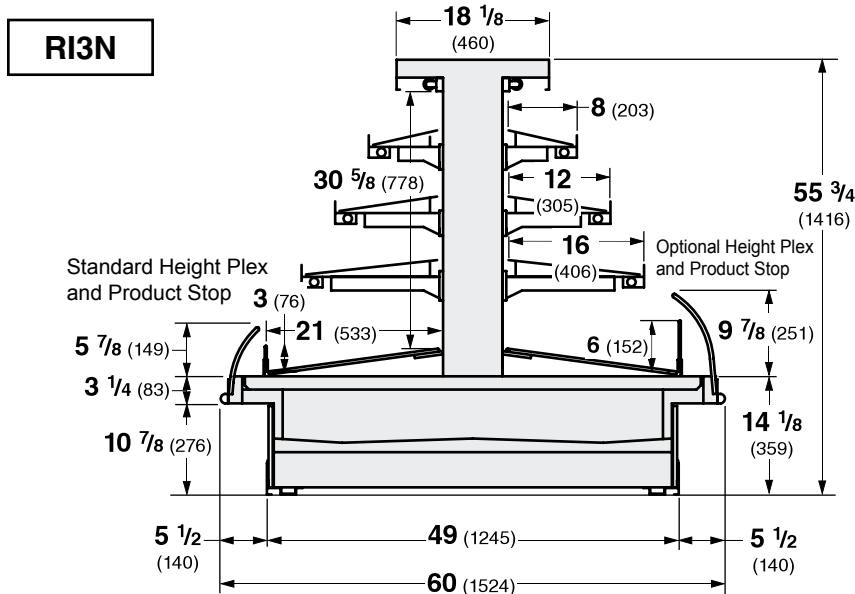
		16 ft
General		
(A) Overall Case Length		192 (4877)
(B) Base Length		173 (4394)
Maximum O/S dimension of case back to front (includes bumper)		60 (1524)
Front of splashguard to O/S edge of front base rail		1 5/8 (41)
Front of case to O/S edge of front base rail		13 1/8 (333)
Back of case to O/S edge of front base rail		58 7/8 (1495)
Width of base rail		1 7/8 (48)
(D) Length of Canopy		138 1/8 (3508)
Width of Canopy		18 1/8 (460)
Electrical Service (Electrical Field Wiring connection point)		
Center of Electrical service to O/S edge of front base rail		47 (1194)
Left end of case to center of field connection box		27 (686)
Right end of case to center of field connection box		165 (4191)
Waste Outlets 		
(C) LH End of case to the center of waste outlet		96 (2438)
Center of front waste outlet to outside of front base rail		8 7/8 (225)
Center of back waste outlet to outside of front base rail		40 1/8 (1019)
Schedule 40 PVC drip pipe		1 1/2 (38)
Refrigeration Outlet 		
LH end of case to center of refrigeration outlet		22 (559)
RH end of case to center of refrigeration outlet		170 (4318)

Multi-deck Island, 4 Display Levels, Narrow Footprint

Hussmann refrigerated merchandisers configured for sale for use in the United States meet or surpass the requirements of the DOE 2012 energy efficiency standards.

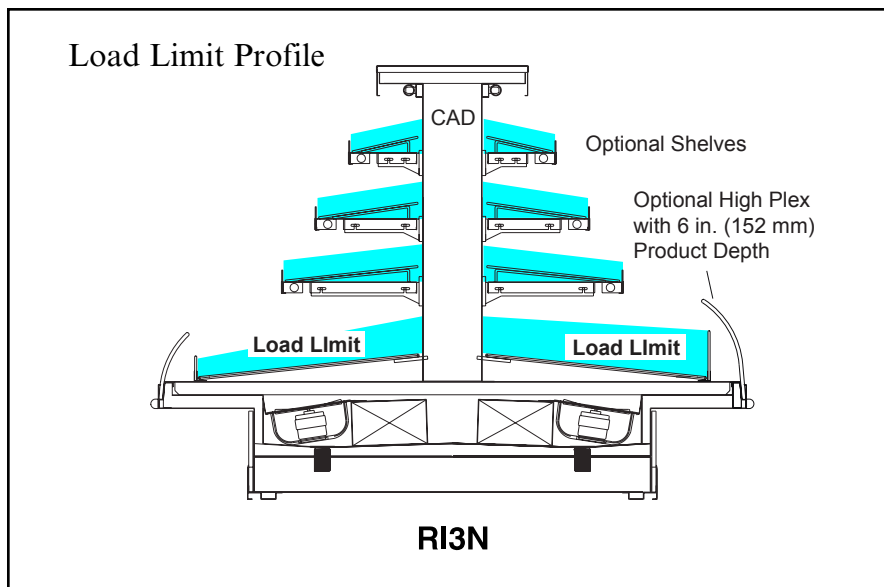
RI3N
Delicatessen

Dimensions shown as inches and (mm).



NSF Certification

This merchandiser model is manufactured to meet NSF/ANSI (National Sanitation Foundation) Standard #7 requirements for construction, materials & cleanability.



Cases may not function properly if they are loaded above load limits.

Air flow between the shelves, from the Center Air Discharge (CAD) to the return, must be maintained at all times for optimum operating efficiency and to prolong product shelf life. At no time should merchandisers be stocked beyond the load limits indicated.

REFRIGERATION DATA

Note: This data is based on store temperature and humidity that does not exceed 75°F and 55% R.H.

	RI3N
Discharge Air (°F)	27
Evaporator (°F)	20
Unit Sizing (°F)	18

Btu/hr/ft

	RI3N
LIT & UNLIT SHELVES	RI3N
Parallel	1733
Conventional	1898

DEFROST DATA

	RI3N
Frequency (hr)	4
Defrost Water (lb/ft/day)	12

(± 15% based on case configuration and product loading).

	RI3N
OFFTIME	RI3N
Time Terminated (minutes)	20

ELECTRIC OR GAS Not Recommended

CONVENTIONAL CONTROLS

Low Pressure Backup Control	RI3N
CI/CO*	14°F / 4°F
Indoor Unit Only, Pressure Defrost Termination*	48°F

*Use a Temperature Pressure Chart to determine PSIG conversions.

Estimated Charge **	RI3N
16 ft	3.7 lb 59 oz 1.7 kg

**This is an average for all refrigerant types. Actual refrigerant charge may vary by approximately half a pound (8 oz/0.2 kg).

RI3N

Delicatessen

Electrical Data

	16 ft		16 ft	Watts
Number of Fans – 12W	16	Amperes		
		16 ft		16 ft
Evaporator Fan				
120V 50/60Hz Standard Energy Efficient		4.80		288
230V 50/60Hz Standard Energy Efficient		NA		NA
230V 60Hz Export		NA		NA
230V 50Hz Export		NA		NA
Anti-sweat Heaters				
120V 60Hz Standard		1.30		156
230V 50Hz Export		NA		NA
Minimum Circuit Ampacity (MCA)				
120V 50/60Hz Standard Energy Efficient		6.13		
230V 50/60Hz Standard Energy Efficient		NA		
230V 60Hz Export		NA		
230V 50Hz Export		NA		
Maximum Over Current Protection 120V		20		
Maximum Over Current Protection 230V		NA		

ONLY LIGHTING CONFIGURATIONS THAT ARE COMPLIANT WITH THE U.S. DEPT. OF ENERGY (DOE) 2012 REGULATION ARE AVAILABLE FOR SALE FOR USE IN THE U.S.A.

Standard Lighting				
1 Row Canopy		1.37		164
Optional Lighting				
1 Row of Ledge		3.00		360
Shelf Lighting				
1 Row of Shelves		1.64		197
2 Rows of Shelves		3.28		394
3 Rows of Shelves		4.92		590

120V Lighting Circuit Total = Standard Lighting + Total Optional Lighting + Optional Shelf Lighting

Product Data

RI3N16

*Recommended Usable Cube*¹ (Cu Ft/Case)

87.36 ft³ /case (2.47 m³ /case)

*AHRI Total Display Area*² (Sq Ft/Case)

98.22 ft² /case (9.12 m² /case)

*Shelf Area*³ (Sq Ft/Case)

152.00 ft² /case (14.12 m² /case)

¹ AHRI Refrigerated Volume less shelving and other unusable space: Refrigerated Volume / Unit of Length, ft³/ft [m³/m]

² Computed using AHRI 1200 standard methodology: Total Display Area, ft² [m²] / Unit of Length, ft [m]

³ Shelf surface area is composed of bottom deck plus standard shelf complement, as shown in the Hussmann *Product Reference Guide*. The standard shelf complement for this model is (1) row of 8-inch shelf, (1) row of 12-inch shelf, (1) row of 16-inch shelf.

ESTIMATED SHIPPING WEIGHT⁴

Case

16 ft

lb (kg)

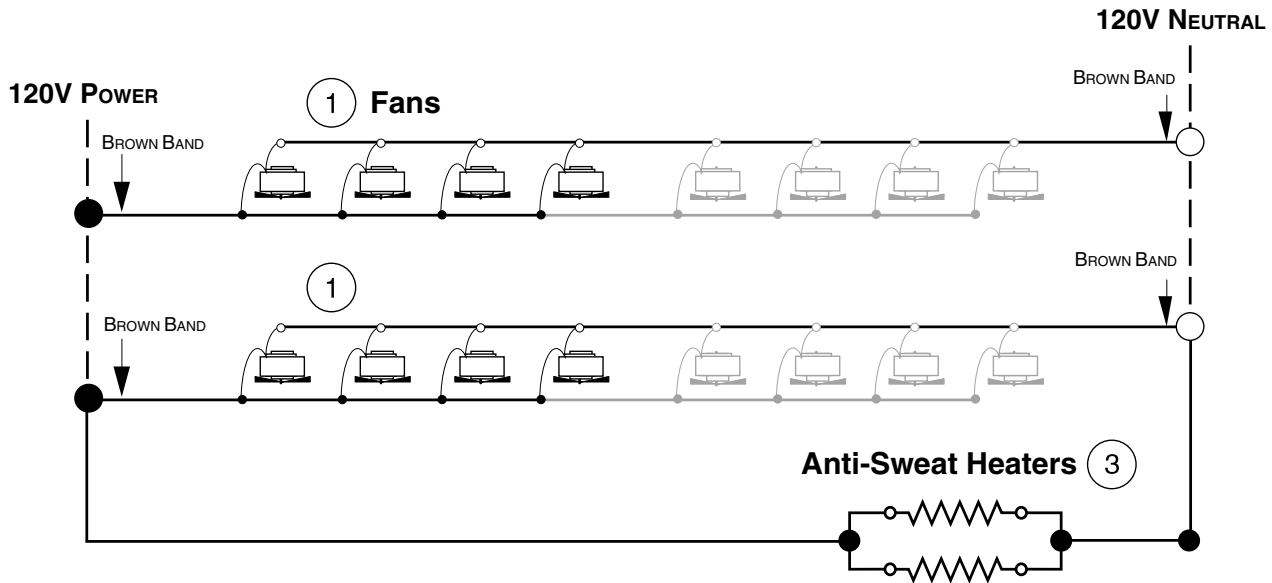
2100 (953)

⁴ Actual weights will vary according to optional kits included.

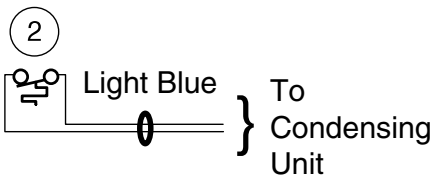
Fan Wiring Offtime Defrost

16 Fans

16 ft – 16 Fans



Refrigeration Thermostat



WARNING

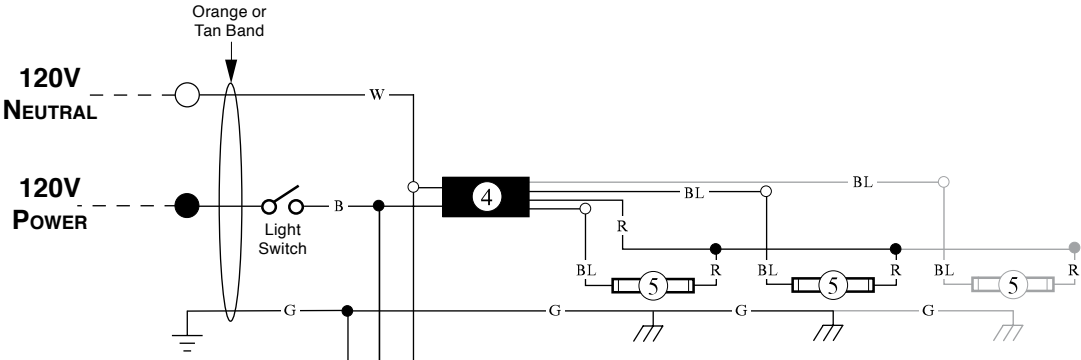
All components must have mechanical ground, and the merchandiser must be grounded.

Circled numbers = Parts list Item Numbers

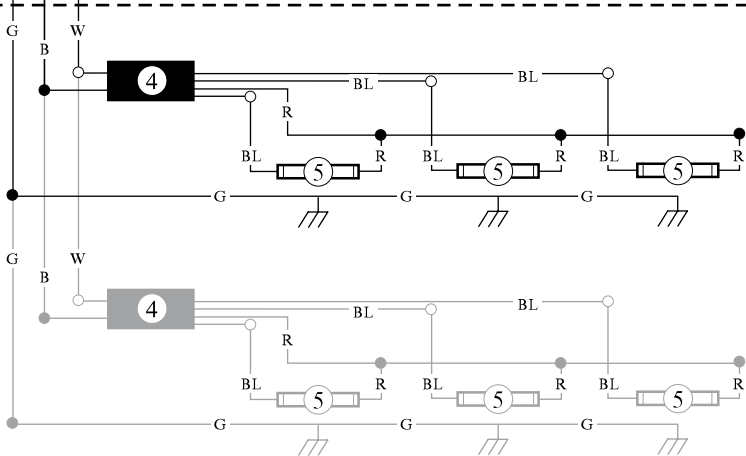
R = Red Y = Yellow G = Green BL = Blue BK = Black W = White

● = 120V Power ○ = 120V Neutral ⊥ = Field Ground ≡ = Case Ground

Standard Lighting — 1 Row Canopy



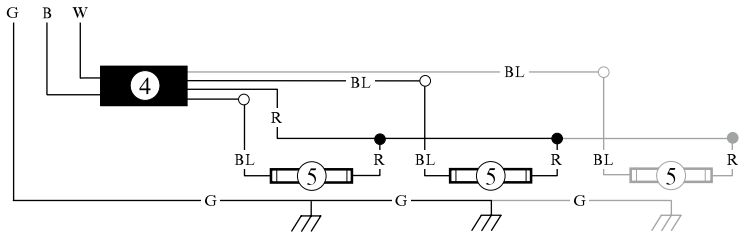
Lighted Shelf Wiring



Typical Shelf Ballast Wiring

Maximum lamps per ballast is three (3).
 Different shelf configurations and different case lengths will have more lamp ballasts.

Optional Ledge Light Circuit



WARNING

All components must have mechanical ground, and the merchandiser must be grounded.
 Circled numbers = Parts list Item Numbers

R = Red Y = Yellow G = Green BL = Blue BK = Black W = White

● = 120V Power ○ = 120V Neutral ⏏ = Field Ground ⏏ = Case Ground