

PARTS LIST

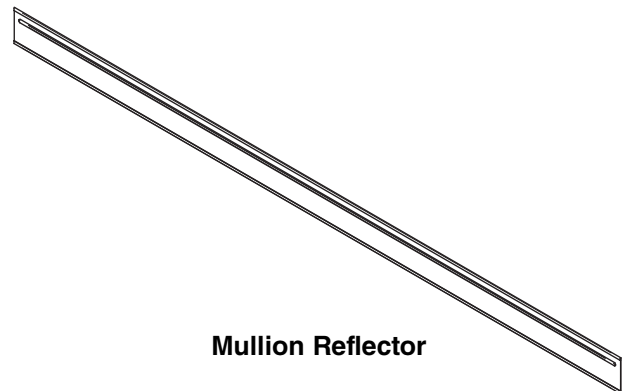
Always Bright LEDs	PN	1 Door	2 Door	3 Door	4 Door	5 Door	RLNIE
RL/RLN Reflector with switch cutout	4991224	1	1	1	1	1	2
RL/RLN Reflector	4991225	1	3	5	7	9	10
RLT Reflector with switch cutout	4991226	N/A	1	1	1	1	N/A
RLT Reflector	4991227	N/A	3	5	7	9	N/A
EcoShine LEDs	PN	1 Door	2 Door	3 Door	4 Door	5 Door	RLNIE
RL/RLN Reflector with switch cutout	4991228	1	1	1	1	1	2
RL/RLN Reflector	4991228	1	3	5	7	9	10
RLT Reflector with switch cutout	4991230	N/A	1	1	1	1	N/A
RLT Reflector	4991231	N/A	3	5	7	9	N/A

SHIPPING DAMAGE

All equipment should be thoroughly examined for shipping damage before and after installation. This equipment has been carefully inspected at our factory. Any claim for loss or damage must be made to the carrier. The carrier will provide any necessary inspection reports and/or claim forms.

Every effort is made to ship all parts for the kit. The Hussmann Service Center can be reached by calling:

- from the U.S. & Canada
1-800-922-1919
- from Mexico
1-800-522-1900



Mullion Reflector



... ATTENTION
INSTALLER

**Mullion Reflectors are for Reach-In
Merchandiser use only.**

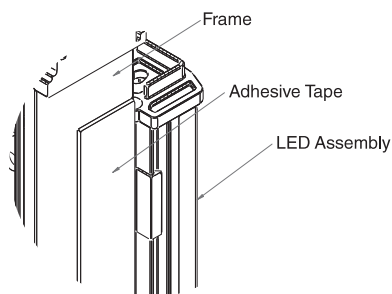
P/N 0509313_A
April 2009

MULLION REFLECTOR

This instruction explains how to install mullion reflectors on the mullions of reach-in merchandisers.

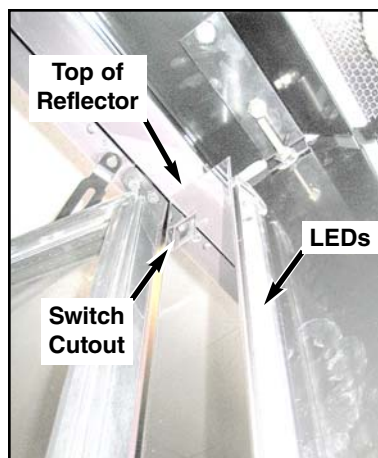
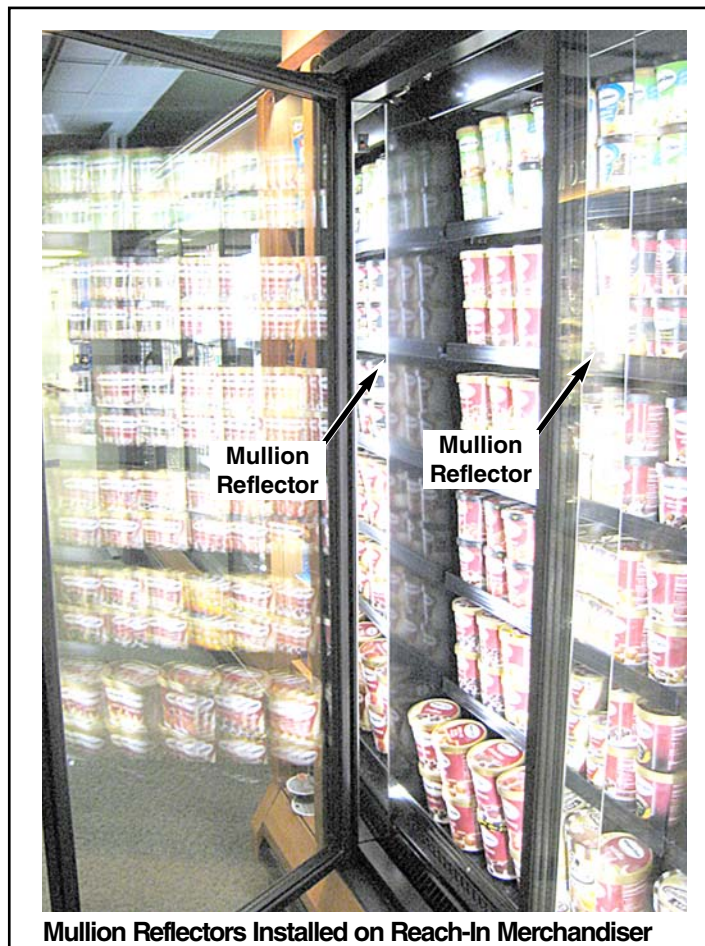
- 1** Remove mullion reflector packaging, and remove protective film from reflector
- 2** Remove film from mullion reflector exposing adhesive.

NOTE: Adhesive tape is applied directly to the mullion if mullion reflector is installed at the factory as shown below.

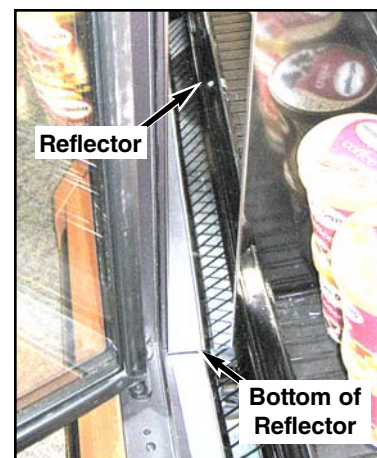


Factory Installation Only

- 3** Open reach-in merchandiser door and apply reflector to reach-in mullion. Press reflector onto mullion evenly so that the adhesive on the back of the reflector seals to the mullion as shown in **Detail A and B**.



DETAIL A



DETAIL B