

We reserve the right to change or revise specifications and product design in connection with any feature of our products. Such changes do not entitle the buyer to corresponding changes, improvements, additions or replacements for equipment previously sold or shipped.

Item	Part #	Description	Wiring Item #	Item	Part #	Description	Wiring Item #
<b>FAN ASSEMBLIES AND THERMOSTATS</b>				<b>LAMPS AND BALLASTS</b>			
A.	0392457	Fan Motor, Evaporator (120V) (1)	(1)	D.	Ballast, Electronic		(4)
	0425336	Fan Blade (120V) (FB.0425336)		0355716	2 lamps (120V) (BA.0355716)		
		embossing toward motor		0355398	3 lamps (120V) (BA.4480188)		
	0436517	Fan Motor, Evaporator (220V)		0440215	2 lamps (230V 50-60 Hz)		
		(FB.4410105)			(BA.4481267)		
	0440141	Fan Blade (220V) (FB.4780828)		0428652	3 lamps (230V 50-60 Hz)		
		embossing toward motor			(BA.4480897)		
				0385104	Ballast Transformer		
B.	0404551	Fan Motor, Ambient (120V) (2)	(2)		(230V 50-60 Hz, per ballast)		
		(MO.0404551)			(TR.4481191)		
	0404552	Fan Motor, Ambient (220V)		E.	Fluorescent Lamp		(5)
		(MO.4410590)			Replace with like fixtures		
C.	0137880	Optional Adjustable Refrigeration Thermostat ((CT)4481084)	(3)				

Note: Revision B updates the plan view on page 2 and cross-section on page 3.



# Engineering Plan Views

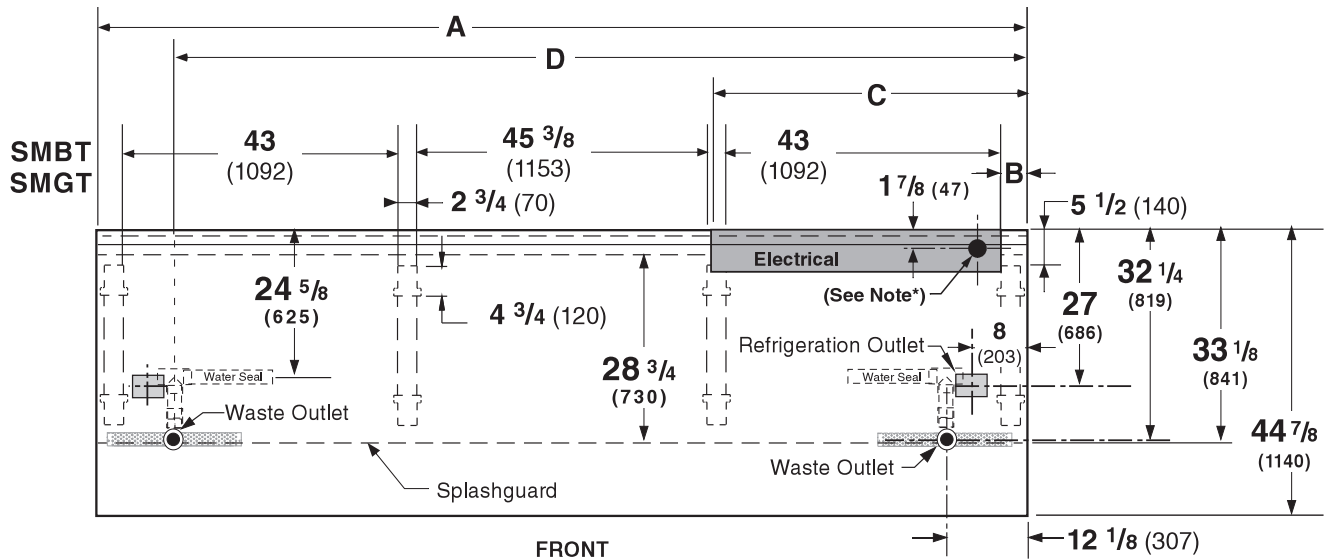
## PHYSICAL DATA

Merchandiser Drip Pipe (in.)	1 1/2
Merchandiser Liquid Line (in.)	3/8
Merchandiser Suction Line (in.)	5/8

## Meat & Delicatessen Flat Hinged Glass Models

05-2011

Dimensions shown as in. and (mm).



	4 ft	6 ft	8 ft	12 ft
<b>General</b>				
<b>(A)</b> Case Length	48 1/4 (1226)	72 1/4 (1835)	96 3/8 (2448)	144 1/2 (3670)
Maximum O/S dimension of case back to front (Note: Includes bumper)	44 7/8 (1140)	44 7/8 (1140)	44 7/8 (1140)	44 7/8 (1140)
Back of case to front of splashguard	33 1/8 (841)	33 1/8 (841)	33 1/8 (841)	33 1/8 (841)
Center of rear legs to center of front legs	23 1/2 (598)	23 1/2 (598)	23 1/2 (598)	23 1/2 (598)
Each End and Partition adds 1 1/2 in. (38 mm) to the length of the lineup.				
<b>Electrical Service</b>				
<b>(B)</b> RH end of case to Electrical raceway right edge	3 7/8 (98)	3 7/8 (98)	3 7/8 (98)	3 7/8 (98)
<b>(C)</b> RH end of case to Electrical raceway left edge	41 3/8 (1051)	32 3/4 (831)	40 1/8 (1019)	44 1/2 (1131)
Back of case to center of knockout	1 7/8 (47)	1 7/8 (47)	1 7/8 (47)	1 7/8 (47)
* Electrical Field Wiring Connection Point				
<b>Waste Outlet</b>				
<b>(D)</b> RH End of case to the center of LH waste outlet	36 1/4 (921)	60 1/4 (1530)	84 3/8 (2143)	132 1/2 (3366)
RH End of case to the center of RH waste outlet	12 1/8 (307)	12 1/8 (307)	12 1/8 (307)	12 1/8 (307)
Back O/S of case to center of waste outlets	32 1/4 (819)	32 1/4 (819)	32 1/4 (819)	32 1/4 (819)
Schedule 40 PVC drip pipe	1 1/4 (32)	1 1/4 (32)	1 1/4 (32)	1 1/4 (32)
** Field installed water seal outlets, tees, and connectors are shipped with the merchandiser.				
<b>Refrigeration Outlet</b>				
Back of case to center of refrigeration outlet	27 (686)	27 (686)	27 (686)	27 (686)
RH end of case to center of refrigeration outlet	8 (203)	8 (203)	8 (203)	8 (203)
Outside diameter of the liquid line	3/8 (9.5)	3/8 (9.5)	3/8 (9.5)	3/8 (9.5)
Outside diameter of the suction line	5/8 (16)	5/8 (16)	5/8 (16)	5/8 (16)

**Excel SMT**  
**Meat / Delicatessen**

**REFRIGERATION DATA**

**Note:** This data is based on store temperature and humidity that does not exceed 75°F and 55% R.H. Schedule defrost at night while lights are off.

	<b>SMGT</b>
<b>Discharge Air (°F)</b>	24
<b>Evaporator (°F)</b>	18
<b>Unit Sizing (°F)</b>	16
<b>Btulhr/ft*</b>	<b>SMGT</b>
<b>Parallel</b>	420
<b>Conventional</b>	450

\*For all refrigeration equipment other than Hussmann, use conventional Btu values.

**DEFROST DATA**

	<b>SMGT</b>
<b>Frequency (hr)</b>	24
<b>Defrost Water (lb/ft/day)</b>	0.17
<i>(± 15% based on case configuration and product loading).</i>	

	<b>SMGT</b>
<b>OFFTIME (minutes)</b>	70
<b>Failsafe (minutes)</b>	90

**ELECTRIC OR GAS** Not Recommended

**CONVENTIONAL CONTROLS**

**Low Pressure Backup Control**

	<b>SMGT</b>
<b>CI/CO (Temp °F)**</b>	<b>11°F / 1°F</b>
<b>Indoor Unit Only, Pressure Defrost Termination (Temp °F)**</b>	

Not Recommended

\*\*Use a Temperature Pressure Chart to determine PSIG conversions.

**PHYSICAL DATA**

**Estimated Charge (lb)\*\***

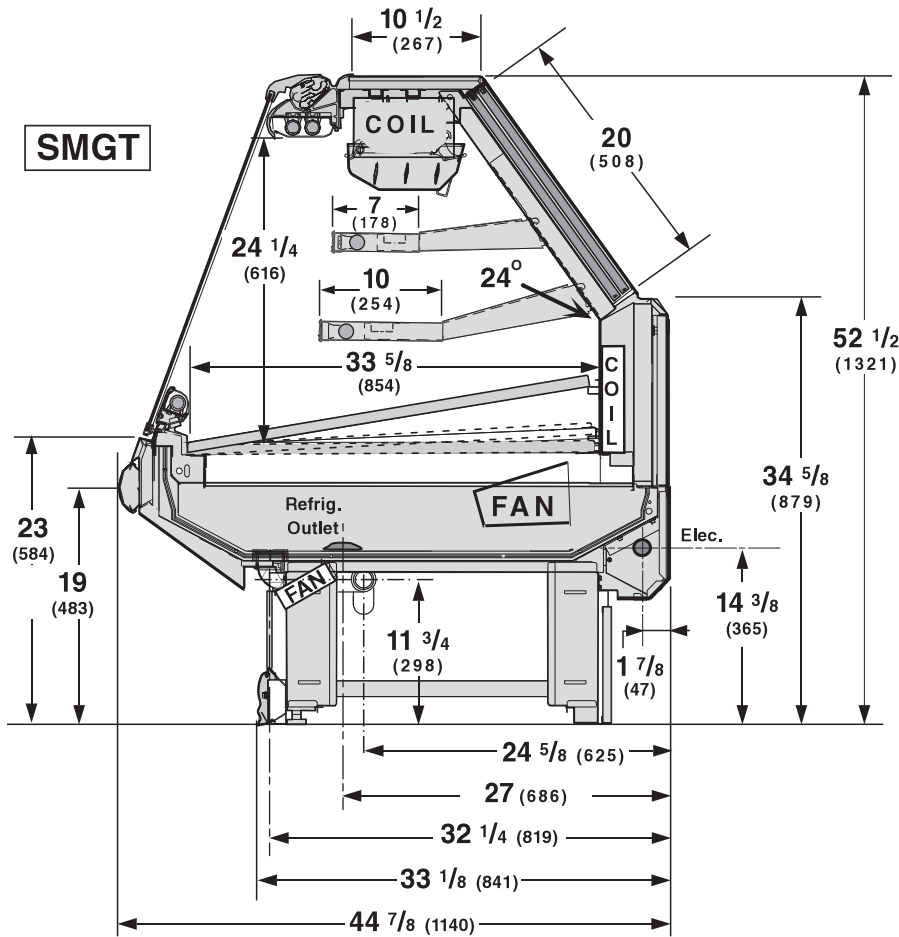
<b>4 ft</b>	0.75 lb	12 oz	0.35 kg
<b>6 ft</b>	1.0 lb	16 oz	0.5 kg
<b>8 ft</b>	1.5 lb	24 oz	0.7 kg
<b>12 ft</b>	2.0 lb	32 oz	0.9 kg

\*\*This is an average for all refrigerant types. Actual refrigerant charge may vary by approximately 0.5 lb (8 oz / 0.2 kg).

**Length Added to Lineup by:**

<b>Each Plastic End w/ Bumper (in.)</b>	3 1/2
<b>Each End/Partition (in.)</b>	1 1/2

Dimensions shown as in. and (mm).



**NOTE:**  
Lighted or unlighted shelves may be used.

**NSF Certification**

This merchandiser model is manufactured to meet ANSI/NSF (National Sanitation Foundation) Standard #7 requirements for construction, materials & cleanability.

### Electrical Data

<b>Number of Fans</b>	<b>4 ft</b>	<b>6 ft</b>	<b>8 ft</b>	<b>12 ft</b>
<b>Refrigeration (120V 60hz) – 4W</b>	<b>1</b>	<b>2</b>	<b>2</b>	<b>3</b>
<b>Ambient Air Wipe – 15W</b>	<b>2</b>	<b>4</b>	<b>4</b>	<b>6</b>
<b>Export Refrigeration (230V 50 hz) – 4W</b>	<b>1</b>	<b>2</b>	<b>2</b>	<b>3</b>
<b>Export Ambient Air Wipe – 15W</b>	<b>2</b>	<b>4</b>	<b>4</b>	<b>6</b>

<b>Merchandiser</b>	<b>Amperes</b>				<b>Watts</b>			
	<b>4 ft</b>	<b>6 ft</b>	<b>8 ft</b>	<b>12 ft</b>	<b>4 ft</b>	<b>6 ft</b>	<b>8 ft</b>	<b>12 ft</b>
<b>Refrigeration Fans</b>								
Standard (120V 60hz)	0.31	0.62	0.62	0.93	24	48	48	72
Energy Efficient (120V 60hz)	NA	NA	NA	NA	NA	NA	NA	NA
Export (230V 50 hz)	0.18	0.36	0.36	0.54	27	54	54	81
<b>Ambient Air Wipe Fans</b>								
Standard (120V 60hz)	0.26	0.52	0.52	0.78	15	30	30	45
Energy Efficient (120V 60hz)	NA	NA	NA	NA	NA	NA	NA	NA
Export (230V 50 hz)	0.13	0.26	0.26	0.39	15	30	30	45
<b>Constant On Anti-sweat Heaters</b>	NA	NA	NA	NA	NA	NA	NA	NA
<b>Cycling Anti-sweat Heaters</b>	NA	NA	NA	NA	NA	NA	NA	NA
<b>Minimum Circuit Ampacity</b>								
With Standard Fans (120V 60hz)	0.77	1.34	1.34	1.91				
With Energy Efficient Fans (120V 60hz)	NA	NA	NA	NA				
With Export Fans (230V 50 hz)	0.51	0.82	0.82	1.13				
<b>Maximum Over Circuit Protection 120V</b>	<b>20</b>	<b>20</b>	<b>20</b>	<b>20</b>				
<b>Electric Defrost Heaters (208V)</b>	NA	NA	NA	NA	NA	NA	NA	NA
<b>Gas Defrost Heaters (208V)</b>	NA	NA	NA	NA	NA	NA	NA	NA
<b>Standard Lighting (120V 60hz)</b>	<b>4 ft</b>	<b>6 ft</b>	<b>8 ft</b>	<b>12 ft</b>	<b>4 ft</b>	<b>6 ft</b>	<b>8 ft</b>	<b>12 ft</b>
2 Row Canopy	0.49	0.80	0.98	1.42	58	92	116	170
1 Row Rail	0.49	0.40	0.49	0.71	58	46	58	85
<b>Optional Lighting</b>								
1 Row Ledge	0.49	0.40	0.49	0.71	58	46	58	85
2 Row Shelves	0.49	0.80	0.98	1.42	58	92	116	170

115V Lighting Circuit Total = Standard Lighting + Total Optional Lighting + Optional Shelf Lighting

230V Lighting Circuit Total = Multiply 115V Lighting Circuit Total by 0.52

**Product Data**

<i>Recommended Usable Cube</i> <sup>1</sup> (Cu Ft/Ft)	2.13 ft <sup>3</sup> /ft (0.20 m <sup>3</sup> /m)
<i>ARI Total Display Area</i> <sup>2</sup> (Sq Ft/Ft)	1.86 ft <sup>2</sup> /ft (0.57 m <sup>2</sup> /m)
<i>Shelf Area</i> <sup>3</sup> (Sq Ft/Ft)	4.22 ft <sup>2</sup> /ft (1.29 m <sup>2</sup> /m)

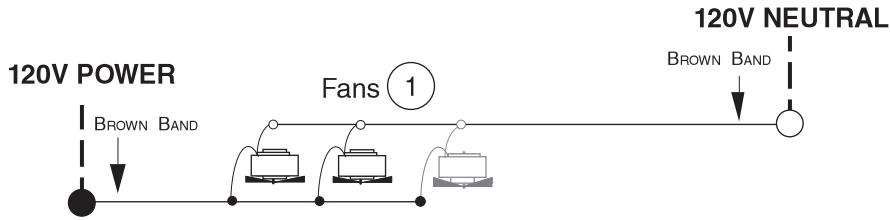
<sup>1</sup> ARI Refrigerated Volume less shelving and other unusable space: Refrigerated Volume/Unit of Length, ft<sup>3</sup>/ft [m<sup>3</sup>/m]  
<sup>2</sup> Computed using ARI 1200 standard methodology: Total Display Area, ft<sup>2</sup> [m<sup>2</sup>]/Unit of Length, ft [m]  
<sup>3</sup> Shelf surface area is composed of bottom deck plus standard shelf complement, as shown in the Hussmann *Product Reference Guide*. The standard shelf complement for this model is one 7-inch shelf and one 10-inch shelf.

<b>ESTIMATED SHIPPING WEIGHT</b> <sup>5</sup>						
<b>Case</b>					<b>Solid End</b>	<b>Glass / Plastic End</b>
	<i>4 ft</i>	<i>6 ft</i>	<i>8 ft</i>	<i>12 ft</i>	<i>(each)</i>	<i>(each)</i>
<b>lb (kg)</b>	700 (318)	800 (363)	900 (408)	1300 (590)	70 (32)	100 (45)

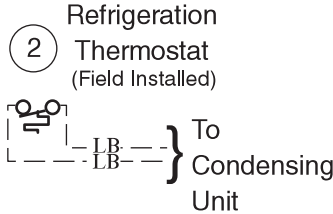
<sup>5</sup> Actual weights will vary according to optional kits included.

# Fan Wiring Offtime Defrost

## Fans

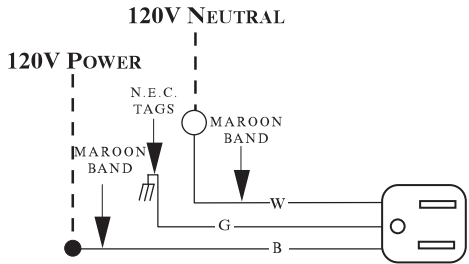


8 ft case has 2 Fans  
12 ft case has 3 Fans



# Receptacles

## Electric Service Receptacle



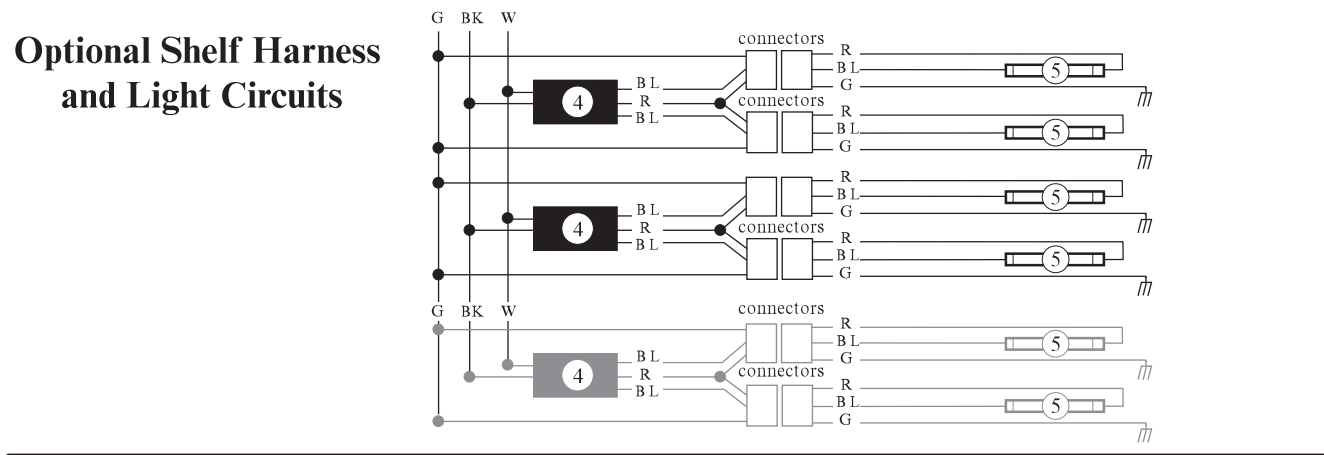
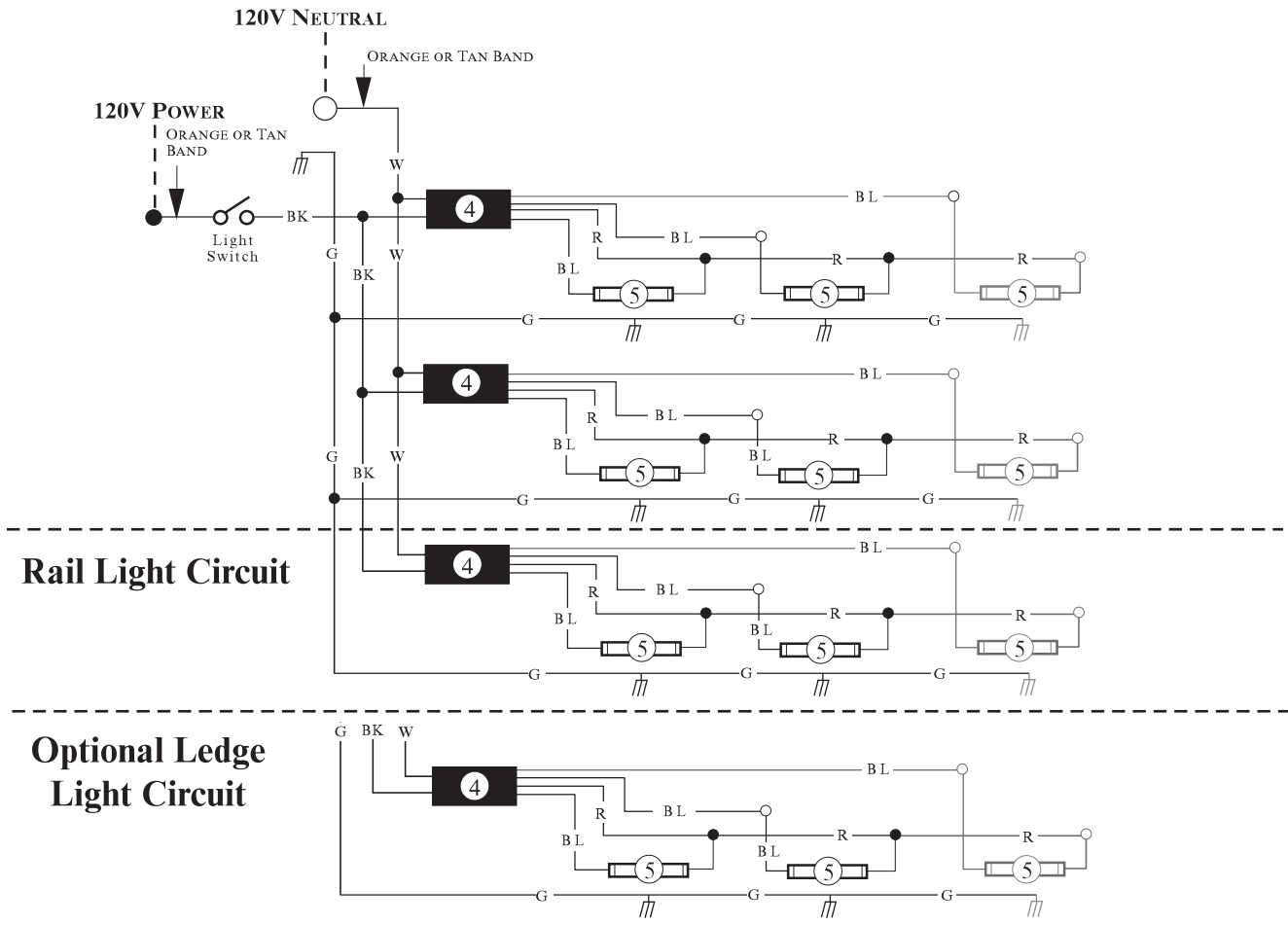
### WARNING

All components must have mechanical ground, and the merchandiser must be grounded.  
Circled Numbers = Parts List Item Numbers  
Grayed components in 12 foot models only.

R = Red    G = Green    BL = Blue    LB = Light Blue    DB = Dark Blue    BK = Black    W = White  
● = 120V POWER    ○ = 120V NEUTRAL    ≡ = Field GROUND    ≡ = Case GROUND

# Standard Lighting 2 Row Canopy, 1 Row Interior Rail

## Light Circuits



### WARNING

All components must have mechanical ground, and the merchandiser must be grounded.  
 Circled Numbers = Parts List Item Numbers  
 Grayed components in 12 foot models only.

R = Red    G = Green    BL = Blue    BK = Black    W = White  
 ● = 120V POWER    ○ = 120V NEUTRAL    ≡ = Field GROUND    ≡ = Case GROUND