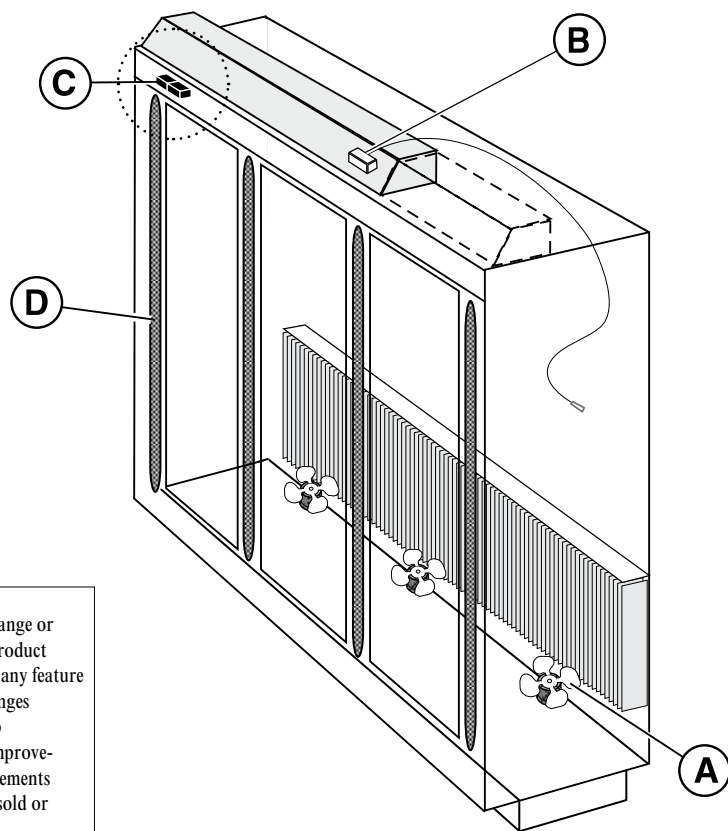


DOE 2012
Energy Efficiency
Compliant

Refrigeration and
electrical connections
are on top. Overhead
piping and electrical
circuits are required.

Warning:
Terminal block NOT for
case-to-case
wire connection!



We reserve the right to change or revise specifications and product design in connection with any feature of our products. Such changes do not entitle the buyer to corresponding changes, improvements, additions or replacements for equipment previously sold or shipped.

Item	Part #	Description	Wiring Item #	Item	Part #	(Qty)	Description	Wiring Item #
FAN ASSEMBLIES, AND THERMOSTATS				LED FIXTURES AND POWER SUPPLY				
(A)	Fan Assembly		(1)	(C)	0499399		Power Supply	
	0477656	Standard Motor (Energy Efficient)		(D)			LED Fixture	
	0315470	Fan Blade					Replace with like fixtures	
(B)		Optional Adjustable Refrigeration Thermostat	(2)					

NOTE: For LED lighting parts contact your Hussmann service representative at 1-800-922-1919. Please have your model and serial number available. Descriptions including size and color are at WWW.HUSSMANN.COM/SERVICEANDPARTS.

Refer to INNOVATOR REACH-IN GLASS DOOR INSTALLATION AND SERVICE manual, PIN 0425683, for Innovator, Innovator II, or Innovator III door and frame replacement parts.

Data sheet-Reach-in RMT

NOTE: Revision H adds NOTE on page 2. Other changes marked by bar, underline or circle.

Engineering Plan Views

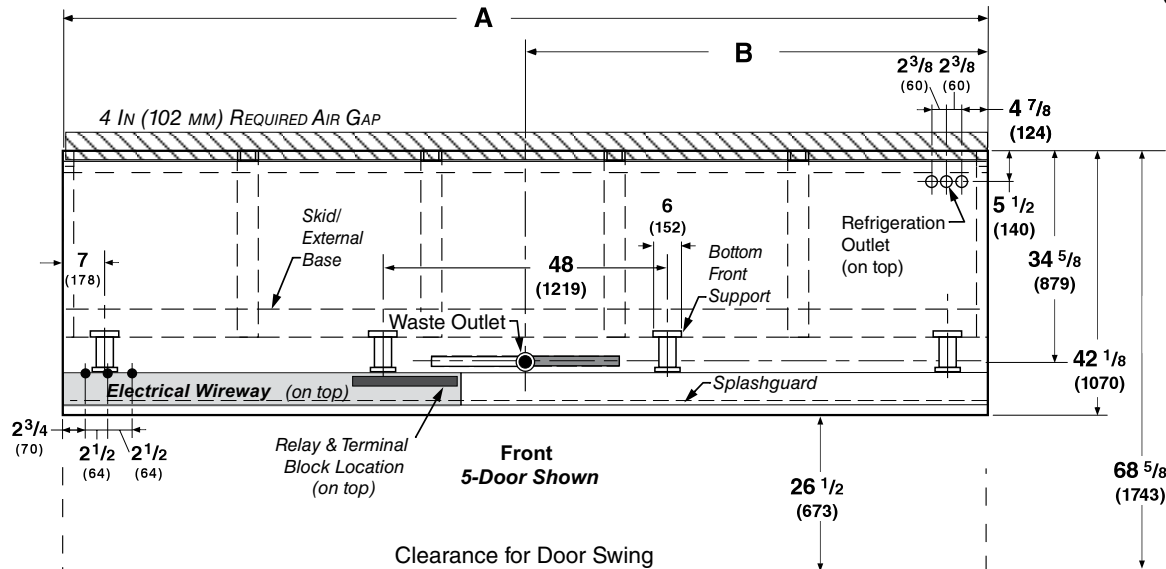
Refrigeration and electrical connections are on top.
Overhead piping and electrical circuits are required.

PHYSICAL DATA	
Merchandiser Drip Pipe (in.)	1 1/4
Merchandiser Liquid Line (in.)	3/8
Merchandiser Suction Line (in.)	7/8

Tall Reach-In 2, 3, 4 & 5 Door

Dimensions shown as inches & (mm).

06-2011



General	2 Dr	3 Dr	4 Dr	5 Dr
(A) Case Length (without ends or partitions)	62 (1575)	92 1/2 (2350)	122 7/8 (3121)	153 3/8 (3896)
**NOTE: Each solid end adds approximately 2 3/8 in (60 mm) to length of line up; each partition add approximately 2 3/4 in (70 mm); case to case joints can add approximately 1/8 in (3 mm) for gasket material.				
Maximum outside dimension of case back to front (Includes bumper)	42 1/8 (1070)	42 1/8 (1070)	42 1/8 (1070)	42 1/8 (1070)
Back of case to front of splashguard	39 (991)	39 (991)	39 (991)	39 (991)
Width of Skid rail	3 3/4 (95)	3 3/4 (95)	3 3/4 (95)	3 3/4 (95)
Width of Bottom Front Support	6 (152)	6 (152)	6 (152)	6 (152)
Stub-up area between front Skid rail and splashguard	6 1/2 (165)	6 1/2 (165)	6 1/2 (165)	6 1/2 (165)
Electrical Service				
Left hand end of case to the center of nearest knockout	2 3/4 (70)	2 3/4 (70)	2 3/4 (70)	2 3/4 (70)
Right hand end of case to the center of center knockout	56 3/4 (1441)	87 1/4 (2216)	117 5/8 (2988)	148 1/8 (3762)
Back outside of case to center of knockout	31 5/8 (803)	31 5/8 (803)	31 5/8 (803)	31 5/8 (803)
Raceway Length	62 (1575)	62 (1575)	62 (1575)	62 (1575)
*NOTE: Electrical Field Wiring Connection Point is at terminal.				
Waste Outlet				
(B) Right end of case to center of waste outlet	23 7/8 (606)	54 1/4 (1378)	46 1/4 (1175)	76 5/8 (1946)
Back outside of case to center of waste outlet	34 5/8 (879)	34 5/8 (879)	34 5/8 (879)	34 5/8 (879)
Water Seal				
Edge of water seal to center of waste outlet	13 (330)	13 (330)	13 (330)	13 (330)
Schedule 40 drip piping	1 1/4 (32)	1 1/4 (32)	1 1/4 (32)	1 1/4 (32)
** NOTE: Field installed water seal outlets, tees, and connectors are shipped with case.				
Refrigeration Outlet				
(TOP OF MERCHANDISER)				
RH end of case to center of RH refrigeration outlet	7 1/4 (184)	7 1/4 (184)	7 1/4 (184)	7 1/4 (184)
Back outside of case to center of refrigeration outlet	5 1/2 (140)	5 1/2 (140)	5 1/2 (140)	5 1/2 (140)
Outside bottom front supports from end of case	7 (178)	7 (178)	7 (178)	7 (178)
Center bottom front support from Centerline	24 (610)	24 (610)	24 (610)	24 (610)
Distance between Center and Outside supports will vary. Top piping is standard in the RMT case.				

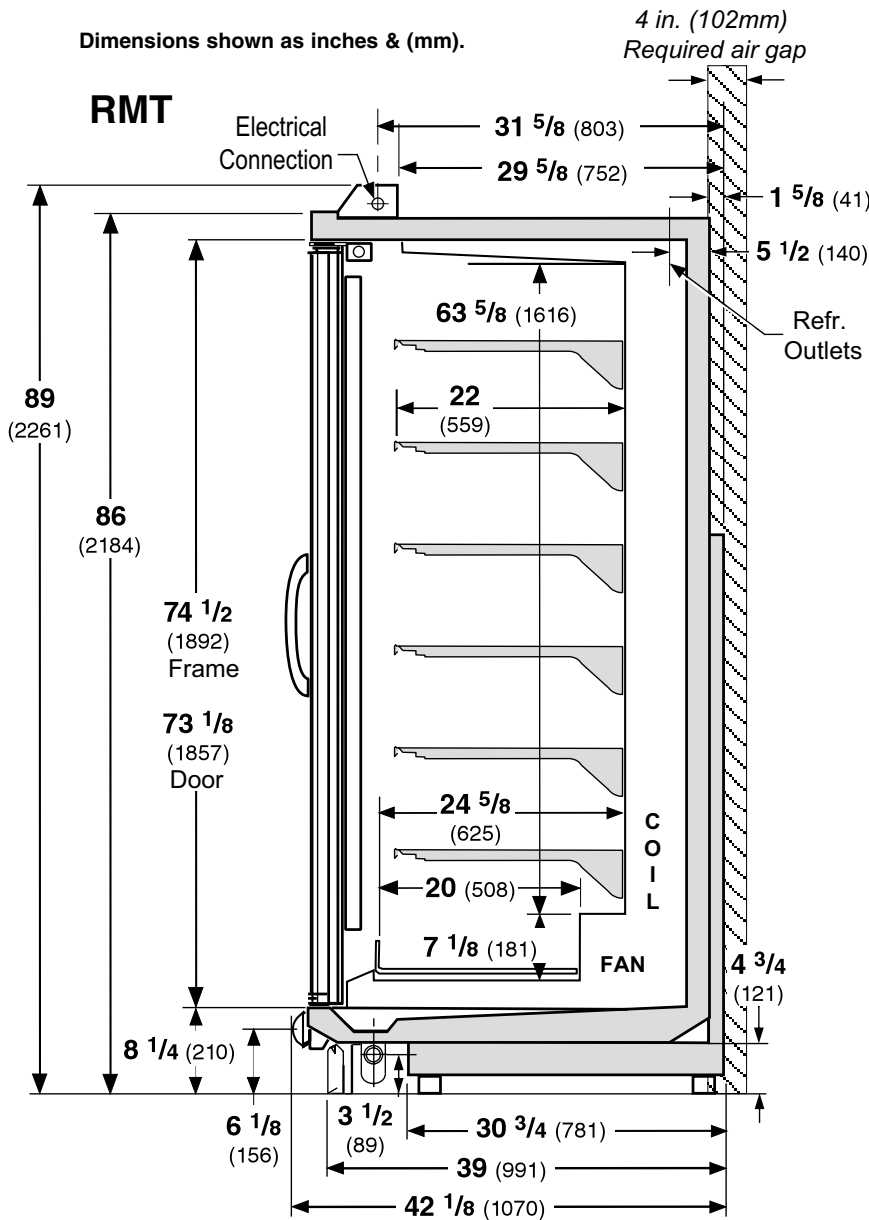
Tall Reach-in 2, 3, 4 and 5 Door Models



All RL and RM models meet or surpass the requirements of the DOE 2012 energy efficiency standards.

Standard Reach-in configuration consists of Innovator I doors, energy efficient fan motors, and EcoShine II LED vertical lighting.

Refrigeration and electrical connections are on top. Overhead piping and electrical circuits are required.



NSF Certification

This merchandiser model is manufactured to meet NSF/ANSI (National Sanitation Foundation) Standard #7 requirements for construction, materials & cleanability.

RMT

With Innovator Doors or Innovator III Doors
Dairy, Deli, Beverages

REFRIGERATION DATA

Note: This data is based on store temperature and humidity that does not exceed 75°F and 55% R.H.

	MEDIUM TEMP
Discharge Air (°F)	32
Evaporator (°F)	27
Unit Sizing (°F)	25

Btu/hr/Door*	NSF	NSF
	TYPE I	TYPE II
INNOVATOR		
Parallel	580	610
Conventional	610	640
INNOVATOR III		
Parallel	580	610
Conventional	610	640

* Optional EcoShine 27W LED's add 20 Btu/hr/door.

DEFROST DATA

Frequency (hr)	24
Defrost Water (lb/Dr/day)	0.36
(± 15% based on case configuration and product loading.)	

ELECTRIC

Temp Term (°F)	NA
Failsafe (minutes)	NA

GAS Not recommended

OFFTIME 60 minutes

CONVENTIONAL CONTROLS

Low Pressure Backup Control
C/CO (Temp °F)** +20°/ +10°

Indoor Unit Only, Pressure Defrost Termination (Temp °F)**

Not Recommended
**Use a Temperature Pressure Chart to determine PSIG conversions.

Estimated Charge ***

2 Dr	2.3 lb	37 oz	1.0 kg
3 Dr	3.2 lb	51 oz	1.4 kg
4 Dr	4.1 lb	66 oz	1.8 kg
5 Dr	5.1 lb	82 oz	2.3 kg

***This is an average for all refrigerant types. Actual refrigerant charge may vary by approximately half a pound (8 oz / 0.2 kg).

RMT

With Innovator Doors or Innovator III Doors
Dairy, Deli, Beverages

Hussmann recommends against frame heater cycling with *Innovator* doors or *Innovator III* doors to prevent door seals from freezing to the frames and tearing.

Electrical Data

	2Dr	3Dr	4Dr	5Dr				
Number of Fans	2	3	4	5				
	Amperes				Watts			
	2Dr	3Dr	4Dr	5Dr	2Dr	3Dr	4Dr	5Dr
Evaporator Fan								
120V 50/60Hz Energy Efficient Innovator	0.6	0.9	1.2	1.5	50	75	100	125
120V 50/60Hz Energy Efficient Innovator III	0.6	0.9	1.2	1.5	50	75	100	125
220V 50/60Hz Energy Efficient Innovator	0.3	0.45	0.6	0.75	50	75	100	125
220V 50/60Hz Energy Efficient Innovator III	0.3	0.45	0.6	0.75	50	75	100	125
Anti-Sweat Heaters (on fan circuit)								
120V 50/60Hz Doors	NA							
120V 50/60Hz Frames Innovator	0.42	0.64	0.85	1.1	50.6	76.2	101.6	127.3
120V 50/60Hz Frames Innovator III	0.42	0.64	0.85	1.1	50.6	76.2	101.6	127.3
220V 50/60Hz Frames Innovator	0.21	0.32	0.43	0.56	50.6	76.2	101.6	127.3
220V 50/60Hz Frames Innovator III	0.21	0.3	0.43	0.56	50.6	76.2	101.6	127.3
Minimum Circuit Ampacity								
120V 50/60Hz Innovator	1.2	1.7	2.3	2.8				
120V 50/60Hz Innovator III	1.2	1.7	2.3	2.8				
220V 50/60Hz Innovator	0.7	0.95	1.20	1.45				
220V 50/60Hz Innovator III	0.7	0.95	1.20	1.45				
Maximum Over Current Protection 120V	20	20	20	20				
Standard Vertical LED Lighting 4100K	2Dr	3Dr	4Dr	5Dr	2Dr	3Dr	4Dr	5Dr
Hussmann EcoShine II™ [22 W] (120V)	0.36	0.54	0.72	0.90	43	65	86	108
Hussmann EcoShine II™ [22 W] (220V Export)	0.20	0.29	0.39	0.49	43	65	86	108
Optional Vertical LED Lighting								
EcoShine II Plus [24 W] (120V)	0.36	0.52	0.68	0.84	43	62	81	100
EcoShine II Plus [24 W] (220V) Export	0.18	0.26	0.34	0.42	43	62	81	100
Hussmann EcoShine EP [16 W] (120V)	0.27	0.40	0.53	0.67	32	48	64	80
Hussmann EcoShine EP [16 W] (220V Exp)	0.15	0.22	0.29	0.36	32	48	64	80

Product Data

<i>Recommended Usable Cube</i> ¹ (Cu Ft/Dr)	24.95 ft ³ /Dr (0.71 m ³ /Dr)
<i>AHRI Total Display Area</i> ² (Sq Ft/Dr)	13.59 ft ² /Dr (1.26 m ² /Dr)
<i>Shelf Area</i> ³ (Sq Ft/Dr)	32.38 ft ² /Dr (3.01 m ² /Dr)

¹ AHRI Refrigerated Volume less shelving and other unusable space: Refrigerated Volume/Unit of Length, ft³/ft [m³/m]

² Computed using AHRI 1200 standard methodology: Total Display Area, ft² [m²]/Unit of Length, ft [m]

³ Shelf surface area is composed of bottom deck plus standard shelf complement, as shown in the Hussmann *Product Reference Guide*. The standard shelf complement for this model is (6) rows of 22-inch shelves.

ESTIMATED SHIPPING WEIGHT ⁴						
Case	<i>1 Dr</i>	<i>2 Dr</i>	<i>3 Dr</i>	<i>4 Dr</i>	<i>5 Dr</i>	Solid End
						<i>(each)</i>
lb (kg)	NA (NA)	926 (420)	1290 (585)	1637 (743)	2006 (910)	60 (27)

⁴ Actual weights will vary according to optional kits included.

Fan and Heater Cicuits - Offtime Defrost (standard)

Medium Temperature

CIRCLED NUMBERS = PARTS LIST ITEM NUMBERS
 R = Red P = Purple 2P = Purple (2 Bands) DB = Dark Blue BK = Black
 LB = Light Blue Pink = Pink BR = Brown Y = Yellow OR = Orange W = White
THESE ARE MARKER COLORS (WIRE MAY VARY.)

