

Note: Portion of parts removed for clarity.

### NSF Certification

This merchandiser model is manufactured to meet NSF/ANSI (National Sanitation Foundation) Standard #7 requirements for construction, materials and cleanability.

Performance Data	Page 2	Electrical Loads	Page 5
Product Data (AHRI Statistics)	Page 2	Replacement Parts List	Page 6
Cross Section	Page 3	Wiring Diagrams	Page 7
Plan Views	Page 4	Computing Refrigeration and Electrical Load	Page 10
Estimated Shipping Weights	Page 4	Revision History	Page 10

### Data sheet - Excel FWEGH-L

We reserve the right to change or revise specifications and product design in connection with any feature of our products. Such changes do not entitle the buyer to corresponding changes, improvements, additions or replacements for equipment previously sold or shipped.

**Excel FWEGH-L**  
Frozen

**Refrigeration Data <sup>1</sup>**

	End Case		AHRI 1200 Rating Point <sup>2</sup>
	FF	IC	
Discharge Air °F (°C)	-12 (-24.44)	-18 (-27.77)	-9 (-22.77)
Evaporator °F (°C)	-18 (-27.77)	-24 (-31.11)	-15 (-26.11)
Unit Sizing °F (°C)	-21 (-29.44)	-27 (-32.77)	-18 (-27.77)
Btu/hr per case (Watts/case)			
Parallel	1090 (1049)	1180 (1135)	1065 (573)
Conventional	1140 (1097)	1235 (1188)	1110 (599)

Notes:

1. All data based on store temperature and humidity that does not exceed 75 deg F and 55% relative humidity.
2. For energy consumption comparison only.
3. Dual temperature operation kits are not suitable for ice cream temperature applications.

**Defrost Data**

**Frequency** (hours between defrost) 24

**Defrost Water** 3.3 lb/ft/day (4.9 kg/m)

(± 15% based on case configuration and product loading).

**OFFTIME** **FWEGH**  
**Time (minutes)** Not Recommended

**ELECTRIC**  
Temp Term (°F) 48  
Failsafe (minutes) 60

**Gas**  
Duration (minutes)

FF 15  
IC 18

**Conventional Controls**

**FWEGH**  
**Low Pressure Backup Control CI/CO <sup>4</sup>**  
FF -15°F / -27°F  
-26.1°C / -32.7°C  
IC -21°F / -33°F  
-29.4°C / -36.1°C

**Indoor Unit Only, Pressure Defrost Termination <sup>4</sup>**  
Not Recommended

<sup>4</sup> Use a Temperature Pressure Chart to determine PSIG conversions.

**Estimated Charge <sup>5</sup> FWEGH-L**

End 1.5 lb 40 oz 0.7 kg

<sup>5</sup> This is an average for all refrigerant types. Actual refrigerant charge may vary by approximately half a pound.

**Product Data**

**Recommended Usable Cube <sup>6</sup> (Cu Ft/Ft)** 3.69 ft<sup>3</sup>/ft (0.34 m<sup>3</sup>/m)  
**AHRI Total Display Area <sup>7</sup> (Sq Ft/Ft)** 3.03 ft<sup>2</sup>/ft (0.92 m<sup>2</sup>/m)  
**Shelf Area (Sq Ft/Ft)** 2.79 ft<sup>2</sup>/ft (0.85 m<sup>2</sup>/m)

<sup>6</sup> AHRI Refrigerated Volume less shelving and other unusable space: Refrigerated Volume/Unit of Length, ft<sup>3</sup>/ft [m<sup>3</sup>/m]

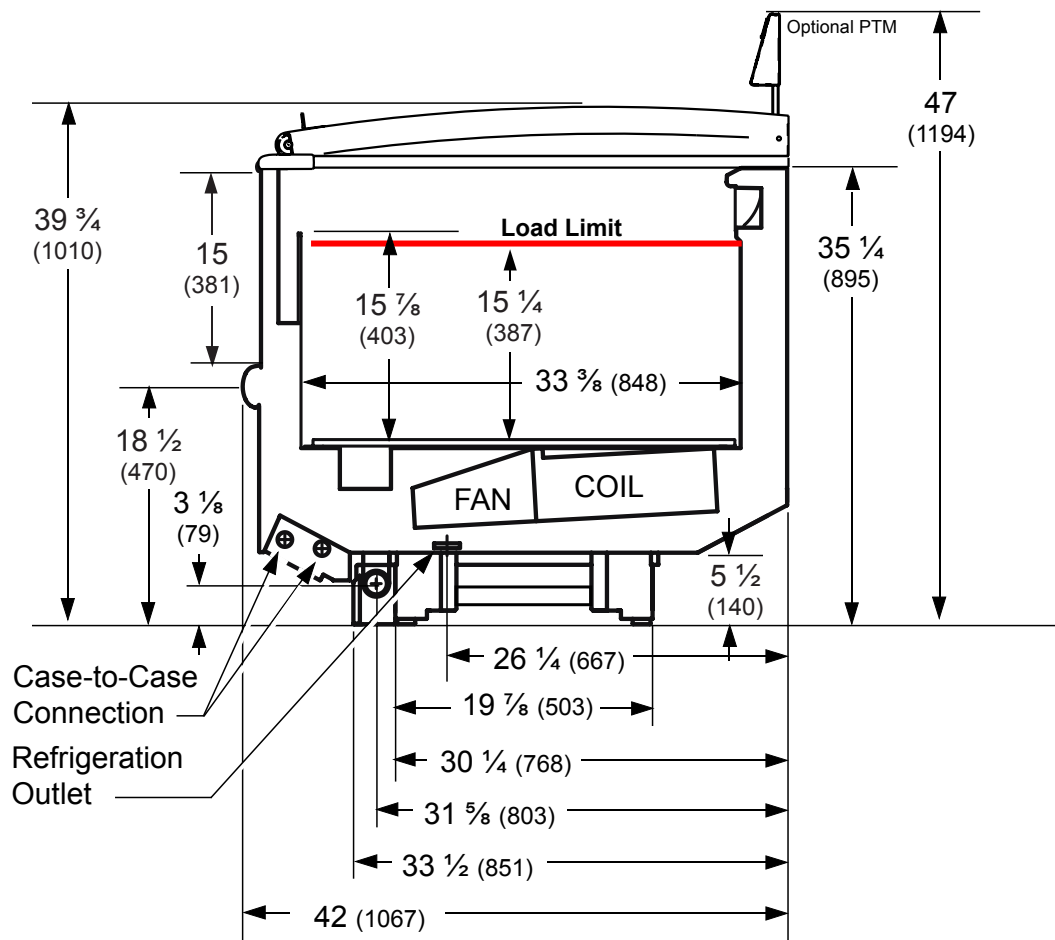
<sup>7</sup> Computed using AHRI 1200 standard methodology: Total Display Area, ft<sup>2</sup> [m<sup>2</sup>]/Unit of Length, ft [m]



Hussmann refrigerated merchandisers configured for sale for use in the United States meet or surpass the requirements of the DOE 2012 energy efficiency standards.

Dimensions shown as in. and (mm).

**FWEGH-L**



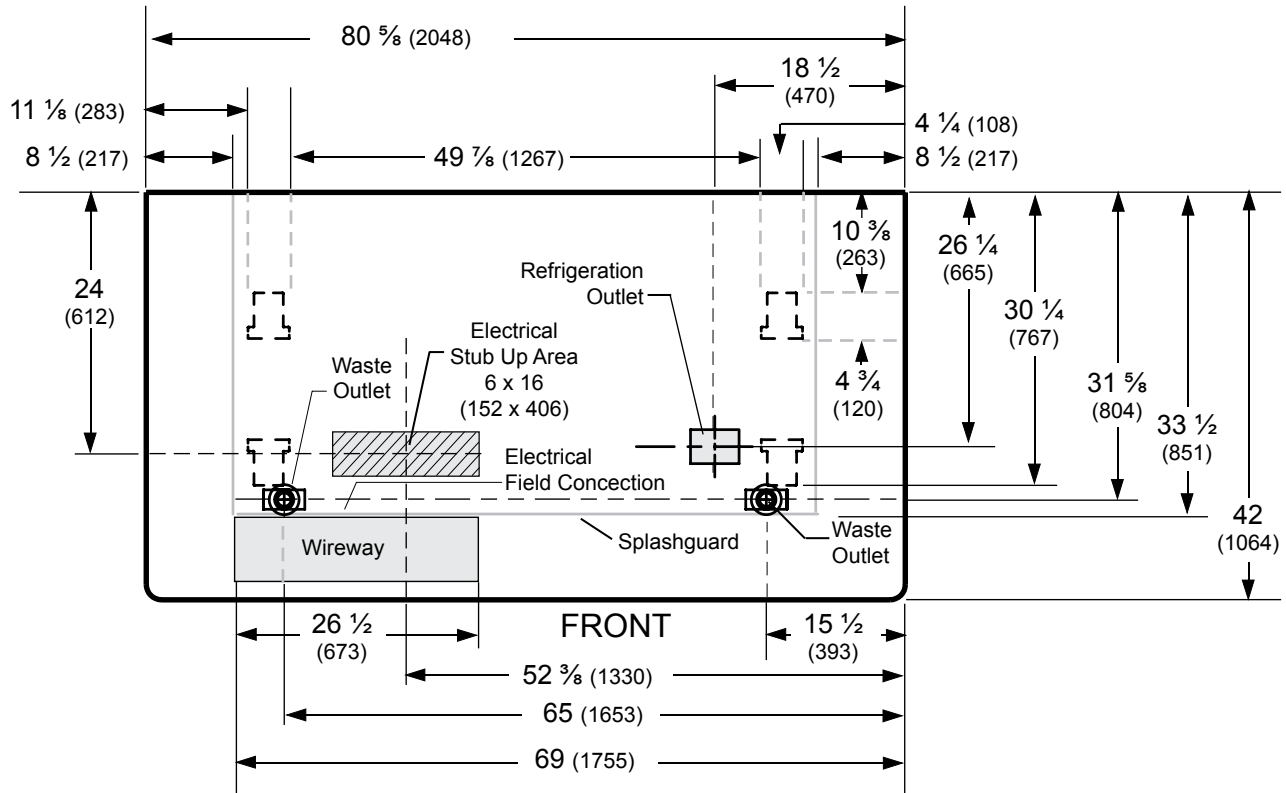
**NSF Certification**

This merchandiser model is manufactured to meet NSF/ANSI (National Sanitation Foundation) Standard #7 requirements for construction, materials and cleanability.

**Excel FWEGH-L**  
Frozen

Dimensions shown as in. and (mm).

**Plan View**



**ENDS or PARTITIONS**  
Each standard end and each insulated partition adds 2 in. (38 mm) to case line up.

PHYSICAL DATA	
Merchandiser Drip Pipe (in.)	1 1/4
Schedule 40 PVC	
Merchandiser Liquid Line (in.)	3/8
Merchandiser Suction Line (in.)	5/8

ESTIMATED SHIPPING WEIGHT †	
<b>Case</b>	<b>Solid End</b>
	<b>(each)</b>
<b>lb (kg)</b>	590 (269)

† Actual weights will vary according to optional kits included.

**Electrical Data**

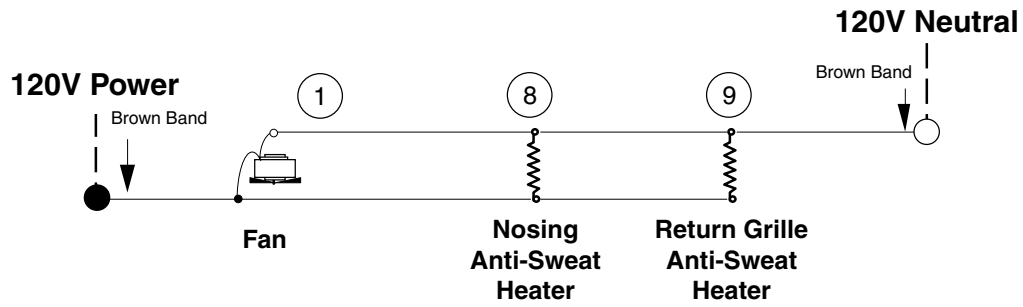
<b>Number of Fans</b>	<b>Standard End</b>	
4W Evaporator	1	
	<b>Amperes</b>	<b>Watts</b>
	<b>Ends</b>	<b>End</b>
<b>Evaporator Fan</b>		
120V 50/60Hz Energy Efficient	0.12	8
<b>Anti-sweat Heaters (on fan circuit)</b>		
120V 50/60Hz Standard	0.26	31
<b>Minimum Circuit Ampacity</b>		
120V 50/60Hz Standard Energy Efficient	0.58	1.08
<b>Maximum Over Current Protection 120V</b>	20	20
<b>Return Glass Anti-sweat Heaters</b>		
120V 50/60Hz Standard	0.17	20.4
<b>208V Electric Defrost</b>	6.54	1360
<b>120V Koolgas Defrost</b>	1.33	160
<b>Standard Lighting</b>	None	
<b>Optional Lighting</b>		
LED 120V 50/60Hz	0.28	34

### Replacement Parts List

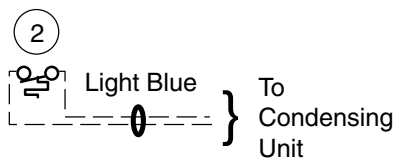
Part #	Description	Part #	Description
<b>FAN ASSEMBLIES</b>		<b>HEATERS (CONT.)</b>	
<b>4W Standard Fan Assembly</b>		<b>208V Evaporator Defrost Heaters</b>	
0528776	7.0-in. Fan Assembly	0444057	End case
0252116	Fan Blade	<b>208V Drip Pan Defrost Heaters, Electric</b>	
<b>THERMOSTATS</b>		0444300	End case
0398557	Defrost Termination Thermostat (Electric Defrost only)	<b>120V Drip Pan Defrost Heaters, Koolgas</b>	
<b>HEATERS</b>		0465906	End case
0481370	Heater Switch (Koolgas Defrost only)	<b>Nosing Anti-sweat Heaters</b>	
		0495006	End case
		<b>Return Grille Anti-sweat Heaters</b>	
		0495010	End case
		<b>Return Glass Anti-sweat Heaters</b>	
		0474782	End case, Front
		0474783	End case, Left Side
		0474784	End case, Right Side
		<b>OPTIONAL LED FIXTURES AND POWER SUPPLY</b>	
		0501213	Power Supply

**NOTE: For LED lighting parts contact your Hussmann service representative at 1-800-922-1919. Please have your model and serial number available.**

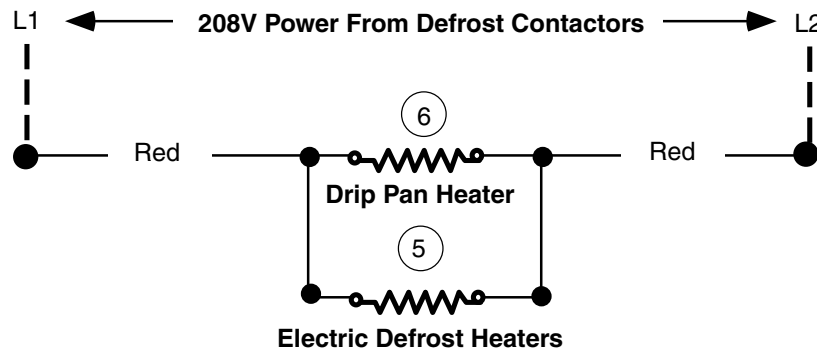
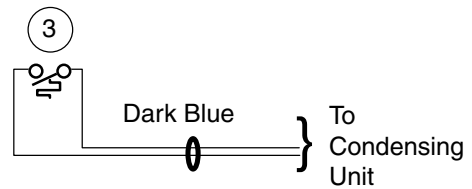
FOR ADDITIONAL PARTS INFORMATION, VISIT  
[HTTP://WWW.HUSSMANN.COM/EN/PAGES/AFTERMARKET-PARTS.ASPX](http://www.hussmann.com/en/PAGES/AFTERMARKET-PARTS.ASPX)



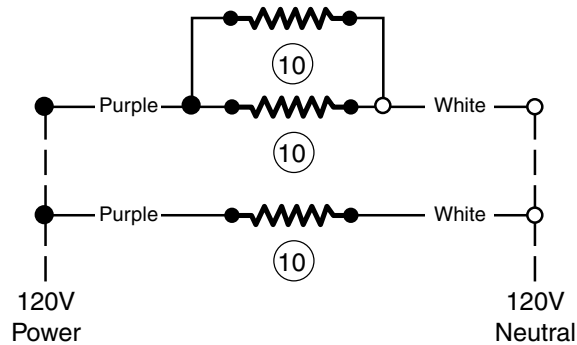
**Refrigeration Thermostat (Optional)**



**Defrost Termination Thermostat**



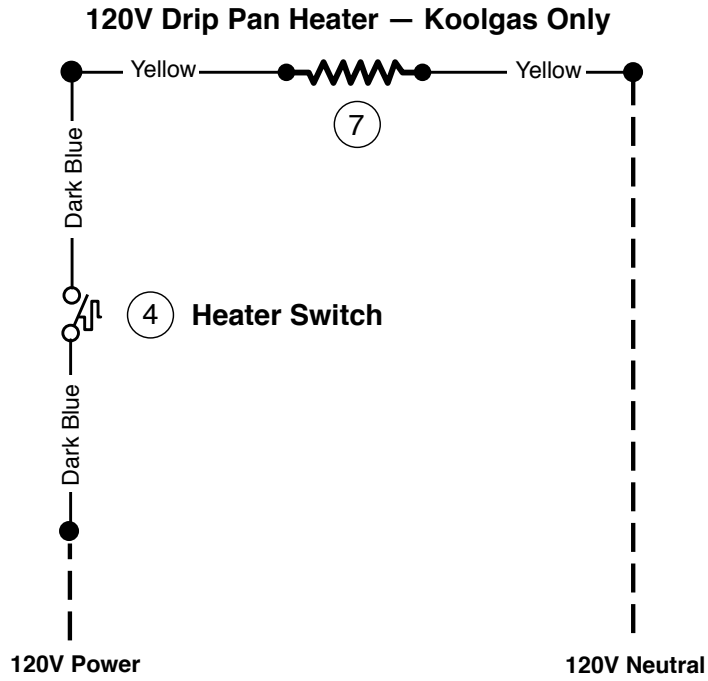
**Return Class Anti-Sweat Heater**



**WARNING**

All components must have mechanical ground, and the merchandiser must be grounded.

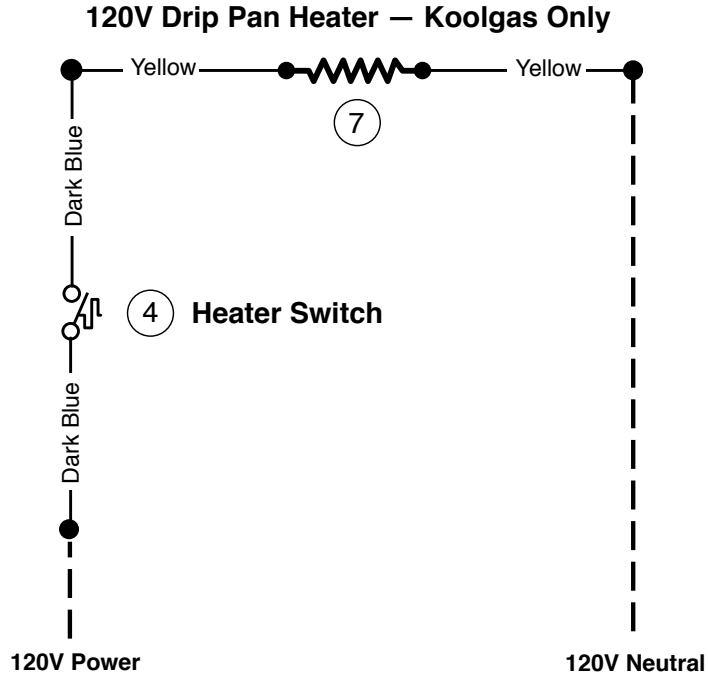
Circled Number = Parts List Item Numbers



**WARNING**

All components must have mechanical ground, and the merchandiser must be grounded.  
Circled Number = Parts List Item Numbers





**WARNING**

All components must have mechanical ground, and the merchandiser must be grounded.  
Circled Number = Parts List Item Numbers

## Estimating Refrigeration and Electrical Load (for comparison purposes only)

### Case Btu

To determine Btu for a case, refer to the performance data chart on Page 2. Select lit or unlit shelves, then select the type of remote refrigeration system (parallel or conventional), which will give Btu/hr/ft. Multiply this number by the length of the case to determine Btu per hour.

### Case Electrical

Refer to store legend to determine number of circuits. Lighting should be specified in store legend.

Fan electrical load for a case is computed by selecting the case length and fan voltage on Page 6. For example, a 12 ft case uses 3 fans. The store legend specifies fans on a 230V circuit. In this instance, fans use 0.39 Amps and the MCA is 0.59. When applied, ambient fans, anti-sweat heaters, controllers, etc. must be included in the MCA. Include lights in the MCA if lights are on same circuit.

Lights may be on a separate circuit. To estimate lighting load: select case length (12 ft), canopy lighting [standard or optional] (here 0.70 for standard), and shelf lighting [maximum for which case is wired] (1.53 for six shelves); then add together [0.70 + 1.53 = 2.23 amps for 120V] (for 230V, multiply 2.23 \* 0.52 = 1.16).

### Line Sizing — Refer to store legend.

Hussmann Line Sizing Charts are engineered for use with Hussmann refrigeration equipment.

---

## Revision History

Revision A: June 2014: Original Issue.

Revision B: January 2016: Updated fan assembly part numbers Page 7.

Revision C: May 2016: Updated cross section.

Revision D: May 2016: added note on page 2.