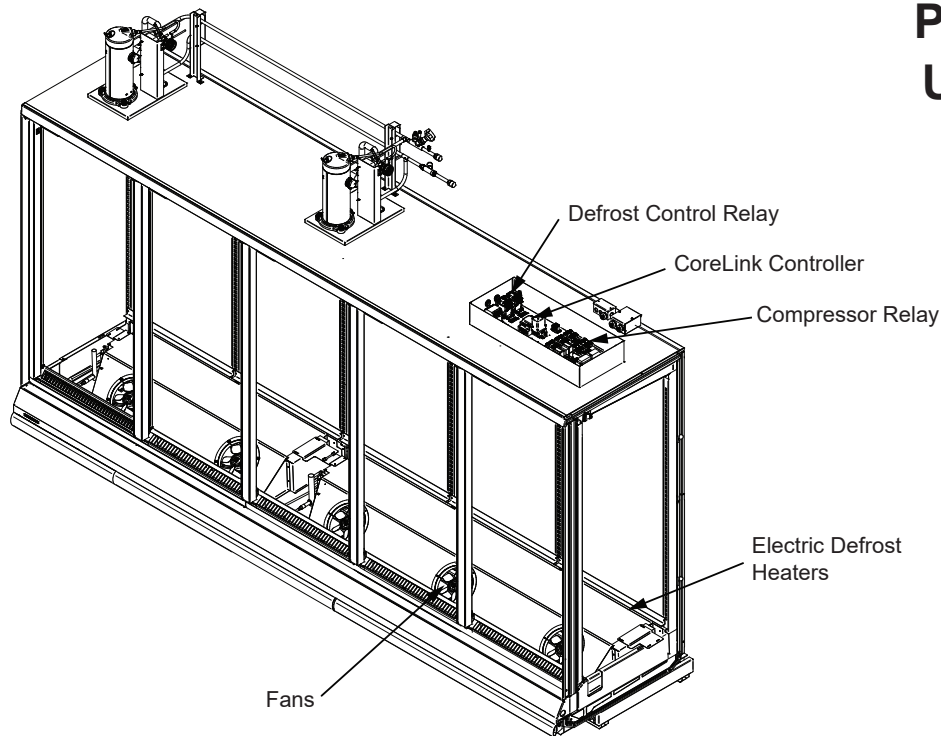


# HUSSMANN®

# microDS™

**RLN-W**  
 with INNOVATOR Doors  
 or INNOVATOR III Doors  
 Water-cooled  
 Self-Contained  
 R290 (Propane)  
 Merchandiser Data Sheet  
**P/N 3081716\_A**  
**UL EPH® Certified**

February 2019



**DOE 2017**  
 Energy Efficiency  
 Compliant



\*Coils and fans are modular with one per 2 or 3 door section.

Portion of parts removed for clarity.

5 door merchandiser shown.

### UL EPH Certification

This merchandiser model is manufactured to meet ANSI/SCC Standards requirements for construction, materials, and cleanability.

IMPORTANT

ONE FLOOR DRAIN IS  
REQUIRED FOR EACH CASE.

Performance Data	Page 2	Shelf Options	Page 6
Product Data (AHRI Statistics)	Page 2	Replacement Parts List	Page 7
Cross Section	Page 3	Wiring Diagrams	Page 8
Plan View	Page 4	Top Views	Page 15
Electrical Loads	Page 5	Revision History	Page 19
Estimated Shipping Weights	Page 6		

Data sheet-Reach-in-RLN-W

We reserve the right to change or revise specifications and product design in connection with any feature of our products. Such changes do not entitle the buyer to corresponding changes, improvements, additions or replacements for equipment previously sold or shipped.

# RLN-W

Frozen Food / Ice Cream

## Refrigeration Data <sup>1</sup>

RLN-W		Optimal Shelf Life	
Application		Frozen Food (FF)	Ice Cream (IC)
Temperature	Discharge Air °F (°C)	-3 (-19.5)	-10 (-23)

### Notes:

1. All data based on store temperature and humidity that does not exceed NSF Type 1 ambient conditions of 75°F and 55% relative humidity, except where noted.
2. Water supply design conditions are 41 to 118°F (5 to 48°C).

### Compressor Data

Total Heat of Rejection	BTU/Hr
2 Dr	5,742
3 Dr	7,848
4 Dr	11,484
5 Dr	12,534

### Defrost Data

Frequency (hours between defrost) 24

	RLN-W
Time (minutes)	45
Temp Termination (°F)	48

**ELECTRIC OR GAS** Electric

**Defrost Water** <sup>3</sup> 1.2 lb/dr/day  
(0.5 kg/m)

<sup>3</sup> (± 15% based on case configuration and product loading).

### Cooling Water Pressure Drop <sup>4</sup>

	RLN-W	PSI
2 Dr	4	4
3 Dr	4	4
4 Dr	5	5
5 Dr	5	5

### Cooling Water Design TD 10°F

<sup>4</sup> Auto-Balancing Valve requires a minimum of 2 PSI to operate. Subtract 2 PSI if the Auto-Balancing Valve is not supplied.

### Glycol/Water Flow Rate <sup>5</sup>

	GPM	LPM
2 Dr	1.5	5.7
3 Dr	2.0	7.6
4 Dr	2.5	9.5
5 Dr	3.0	11.4

### Charge per unit <sup>6</sup>

2 Dr	0.33 lb	5.3 oz	150 g
3 Dr	0.33 lb	5.3 oz	150 g
4 Dr	0.33 lb	5.3 oz	150 g
5 Dr	0.33 lb	5.3 oz	150 g

<sup>5</sup> Use a pre-mixed inhibited glycol solution. If the mixing is to be done on site, use only distilled or de-ionized water (do not use city water).

<sup>6</sup> Maximum R290 charge per condensing unit = 150 g.

<sup>6</sup> Charge per unit per coil section.

### Product Data

<b>Gross Refrigerated Volume<sup>7</sup> (Cu Ft/Ft)</b>	22.80 ft <sup>3</sup> /ft (0.65 m <sup>3</sup> /m)
<b>AHRI Total Display Area<sup>8</sup> (Sq Ft/Ft)</b>	13.04 ft <sup>2</sup> /ft (1.21 m <sup>2</sup> /m)
<b>Shelf Area<sup>9</sup> (Sq Ft/Ft)</b>	28.50 ft <sup>2</sup> /ft (2.65 m <sup>2</sup> /m)

<sup>7</sup> AHRI Gross Refrigerated Volume: Refrigerated Volume/Unit of Length, ft<sup>3</sup>/ft [m<sup>3</sup>/m]

<sup>8</sup> Computed using AHRI 1200 standard methodology: Total Display Area, ft<sup>2</sup> [m<sup>2</sup>]/Unit of Length, ft [m]

<sup>9</sup> Shelf surface area is composed of bottom deck plus standard shelf complement for this model: (5) 22-inch shelves, evenly distributed vertically.

Self-Contained R290 Propane Reach-in Merchandiser,  
 2, 3, 4 & 5 Door Models, 6 Display Levels,  
 Water-cooled, Self-Contained R290 Propane

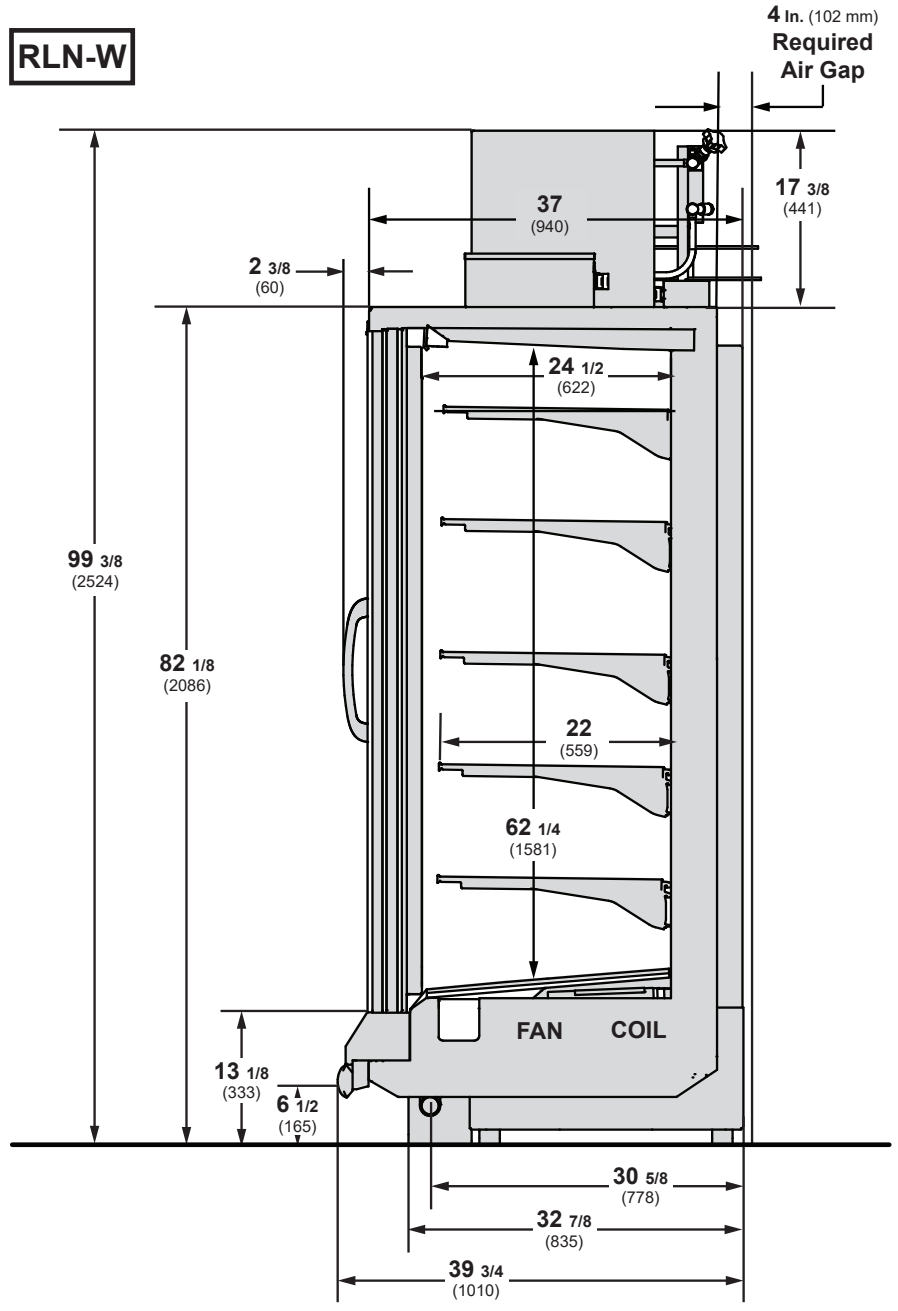
**RLN-W**  
 Frozen Food / Ice Cream

**DOE 2017**  
 Energy Efficiency  
 Compliant

Husmann refrigerated merchandisers configured for sale for use in the United States meet or surpass the requirements of the DOE 2017 energy efficiency standards.

Shelf complement shown as tested:  
 Five rows of shelves (22-in) spaced  
 equally between bottom display pan  
 and interior top panel.

Dimensions shown as in. and (mm).



4-in. between back to back cases.

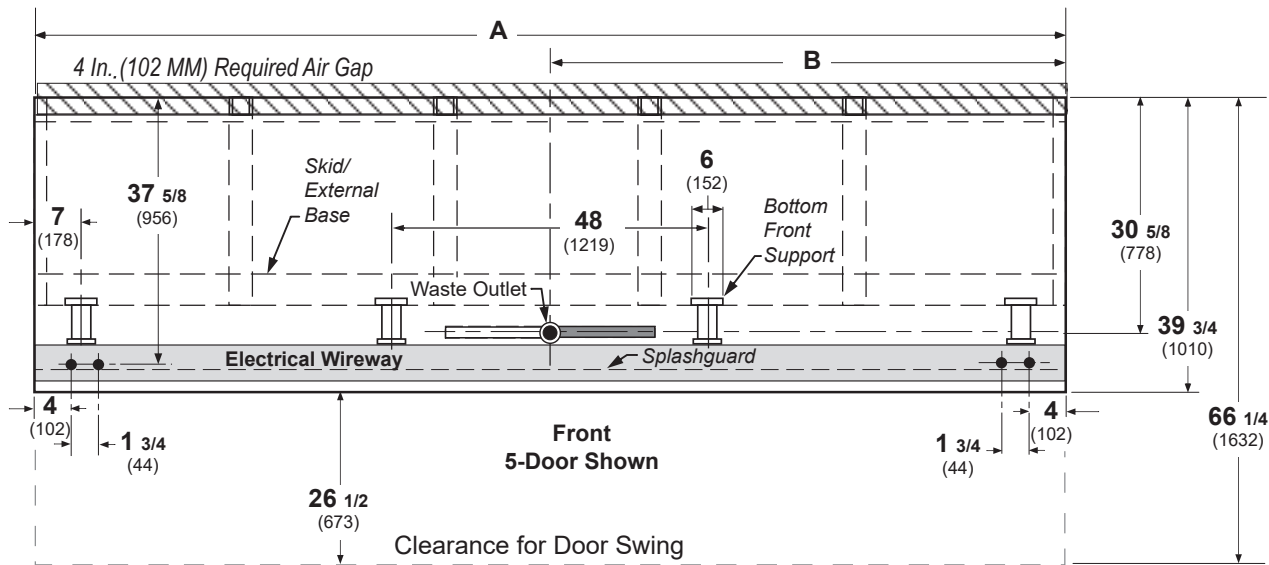
**UL EPH Certification**

This merchandiser model is manufactured to meet ANSI/SCC Standards requirements for construction, materials, and cleanability.

# Engineering Plan View

**RLN-W**



Dimensions shown as in. and (mm).



(5 Door Model shown above)

	2 Dr	3 Dr	4 Dr	5 Dr
<b>General</b>				
(A) Case Length (without ends or partitions) Each end and insulated partition adds 2 in. (51 mm) to case line up; each window end or insulated partition adds 1 1/2 in. (38 mm).	62 (1575)	92 1/2 (2350)	122 7/8 (3121)	153 3/8 (3896)
Maximum O/S dimension of case back to front (includes bumper) (Add 26 1/2 in (673 mm) for door swing.)	39 3/4 (1010)	39 3/4 (1010)	39 3/4 (1010)	39 3/4 (1010)
Back of case to rear of splashguard	35 3/4 (908)	35 3/4 (908)	35 3/4 (908)	35 3/4 (908)
Width of Skidrail	3 3/4 (95)	3 3/4 (95)	3 3/4 (95)	3 3/4 (95)
Width of Bottom Front Support	6 (152)	6 (152)	6 (152)	6 (152)
Stub-up area between front support and splashguard	3 1/8 (79)	3 1/8 (79)	3 1/8 (79)	3 1/8 (79)
<b>Electrical Service (Field Electrical Wiring Connection)</b>				
RH End of case to center of Electrical Wiring Connection (top of case)	13 3/4 (349)	13 3/4 (349)	13 3/4 (349)	13 3/4 (349)
Back outside of case to center of Electrical Wiring Connection	5 1/2 (140)	5 1/2 (140)	5 1/2 (140)	5 1/2 (140)
<b>Waste Outlets (with required drain extension)</b>				
(B) RH End of case to the center of waste outlet	23 7/8 (606)	54 1/4 (1378)	46 1/4 (1175)	76 5/8 (1946)
Back O/S of case to center of waste outlet	30 5/8 (778)	30 5/8 (778)	30 5/8 (778)	30 5/8 (778)
Schedule 40 PVC drip pipe	1 1/4 (32)	1 1/4 (32)	1 1/4 (32)	1 1/4 (32)
<b>Water Seal</b>				
Edge of water seal to center of waste outlet	13 (330)	13 (330)	13 (330)	13 (330)
**NOTE: Field installed water seal outlets, tees, and connectors are shipped with the case.				

## Electrical Data

<b>Number of Fans</b> 8.25-in.	<b>2 dr</b>	<b>3 dr</b>	<b>4 dr</b>	<b>5 dr</b>						
	2	3	4	5						
		<b>Amperes</b>					<b>Watts</b>			
<b>Evaporator Fan</b> 120V 50/60Hz	<b>2 dr</b>	<b>3 dr</b>	<b>4 dr</b>	<b>5 dr</b>	<b>2 dr</b>	<b>3 dr</b>	<b>4 dr</b>	<b>5 dr</b>		
	0.60	0.90	1.20	1.50	36	54	72	90		
<b>Door Anti-sweat Heaters (on fan circuit)</b> 120V 50/60Hz Innovator	1.50	2.30	3.00	3.80	182	273	364	455		
120V 50/60Hz Innovator III	0.90	1.30	1.70	2.20	104	156	208	260		
<b>Frame Anti-sweat Heaters (on fan circuit)</b> 120V 50/60Hz	0.78	1.18	1.57	1.97	94	141	188	236		
<b>Condensing Unit (208V/230V, 3 ph, 60 Hz) Standard</b>										
<b>NOTE:</b> One compressor can start at a time.										
Compressor RLA	4.6	4.6	9.2	9.2						
Compressor LRA	58/unit	58/unit	58/unit	58/unit						
<b>Merchandise Circuit Requirements (208V/230V, 3 Ph, 60 Hz)</b>										
Total Amps	7.8	10.1	15.7	17.3						
MCA	9.8	12.6	17.6	21.0						
Maximum Over Current Protection	20	20	20	30						
					<b>NEMA Plug</b>					
					 					
					L21-20P	L21-30P				
<b>Defrost</b> Drain Heaters (120V)	0.63	1.25	2.00	2.57	75	150	240	300		
Electric Defrost (208V)	6.72	10.08	13.46	16.82	1400	2100	2800	3500		
<b>Optional Electrical Plug - NEMA</b>	L21-20P (2, 3, 4 dr)		L21-30P (5 dr)							

**ONLY LIGHTING CONFIGURATIONS THAT ARE COMPLIANT WITH THE U.S. DEPT. OF ENERGY (DOE) 2017 REGULATION ARE AVAILABLE FOR SALE FOR USE IN THE U.S.A.**

### STANDARD LIGHTING

<b>EcoShine II</b>	<b>2 Dr</b>	<b>3 Dr</b>	<b>4 Dr</b>	<b>5 Dr</b>	<b>2 Dr</b>	<b>3Dr</b>	<b>4 Dr</b>	<b>5 Dr</b>
120V	0.31	0.46	0.62	0.77	37.1	55.6	74.2	92.7
220V Export	0.17	0.25	0.34	0.42	37.1	55.6	74.2	92.7

### OPTIONAL LIGHTING

<b>EcoShine II</b>	<b>2 Dr</b>	<b>3 Dr</b>	<b>4 Dr</b>	<b>5 Dr</b>	<b>2 Dr</b>	<b>3Dr</b>	<b>4 Dr</b>	<b>5 Dr</b>
[22 W] 120V	0.36	0.52	0.68	0.84	43.2	62	81	100
[22 W] 220V Export	0.20	0.28	0.37	0.46	43.2	62	81	100

<b>GE Illumination</b>	<b>2 Dr</b>	<b>3 Dr</b>	<b>4 Dr</b>	<b>5 Dr</b>	<b>2 Dr</b>	<b>3Dr</b>	<b>4 Dr</b>	<b>5 Dr</b>
120V	0.30	0.45	0.60	0.75	36	54	72	90
220V Export	0.16	0.25	0.33	0.41	36	54	72	90

# RLN-W

Frozen Food / Ice Cream

## ENDS or PARTITIONS

Each standard end and each insulated partition adds 2 in. (38 mm) to case line up.

## PHYSICAL DATA

Merchandiser Drip Pipe (in.) 1 1/4  
Schedule 40 PVC

## ESTIMATED SHIPPING WEIGHT †

Case	2 Dr	3 Dr	4 Dr	5 Dr	Solid End (each)
lb (kg)	945 (429)	1172 (532)	1645 (746)	1924 (873)	55 (25)

† Actual weights will vary according to optional kits included.

## Shelf Options

Approved shelf sizes for standard (horizontal, 2-3 position brackets) displays:

20-inch  
22-inch

Contact engineering for non-standard display recommendations.

Optimal number of Shelves: 5 per door

Maximum number of Shelves: 5 per door

Standard shelf complement for test purposes: (5 per door) 22-inch shelves, evenly distributed vertically

## Replacement Parts List

Part #	Description	Part #	Description
<b>FAN ASSEMBLIES</b>		<b>CORELINK CONTROL</b>	
<b>2-Dr &amp; 4 Dr</b>		0554376	CoreLink Controller
<b>Standard HE Fan Assembly</b>		3017903	XEV20D Expansion Board
0529672	Fan Assembly	3013759	Discharge Air Sensor
0527610	Fan Motor	3013760	Defrost Termination
0461805	Fan Blade	3047275	Fan / Light Relay
0344662	Defrost Limit Thermostat	0005226	Compressor Discharge Sensor
		3051962	Pressure Switch
<b>LED FIXTURES AND POWER SUPPLY</b>		<b>REFRIGERATION SYSTEM</b>	
0499399	Power Supply	3061753	Capillary Tube 2, 4 & 5 Door
	LED Fixture	3036087	Compressor 2, 4 & 5 Door
	<i>Replace with like fixtures.</i>	3026484	Compressor 3 Door
<b>COILS</b>		0530462	Filter/drier
0530400	2 Door & 4 Door	3026481	Heat Exchanger
0530429	3 Door & 5 Door	3074881	Capillary Tube 3 Door
<b>HONEYCOMB - WHITE</b>		<b>WATER LINE</b>	
0495287	2 Door & 4 Door	0527748	Strainer, Water
0495261	3 Door	0527742	Balancing Valve (Adjustable)
0495262	5 Door	3042623	2 Door Auto-Balancing Valve 1.5 GPM (Optional)
<b>RELAYS</b>		3042965	3 Door Auto-Balancing Valve 2.0 GPM (Optional)
3048148	Compressor Relay	3065648	4 Door Auto-Balancing Valve 2.5 GPM (Optional)
3047276	2 & 3 Door Defrost Relay	3081748	5 Door Auto-Balancing Valve 3.0 GPM (Optional)
3047277	4 & 5 Door Defrost Relay	<b>HEATERS</b>	
<b>NOTE: For LED lighting parts contact your Hussmann service representative at 1-800-922-1919. Please have your model and serial number available. Descriptions including size and color are at <a href="http://www.hussmann.com/en/products/led-lighting/pages/default.aspx">HTTP://WWW.HUSSMANN.COM/EN/PRODUCTS/LED-LIGHTING/PAGES/DEFAULT.ASPX</a>.</b>		3020841	Electric Defrost Heaters, 208V, (Front & Rear) 2 Door & 4 Door
<b>FOR ADDITIONAL PARTS INFORMATION, VISIT <a href="http://www.hussmann.com/en/pages/aftermarket-parts.aspx">HTTP://WWW.HUSSMANN.COM/EN/PAGES/AFTERMARKET-PARTS.ASPX</a></b>		3020842	Electric Defrost Heater, 208V, (Front & Rear) 3 Door & 5 Door
		0387036	Drain Pan Heater, 2 Door
		0387037	Drain Pan Heater, 3 Door
		0387038	Drain Pan Heater, 4 Door
		0387039	Drain Pan Heater, 5 Door

# RLN-W

## Frozen Food / Ice Cream

# CoreLink Propane

## Wiring - 2 & 3 Door

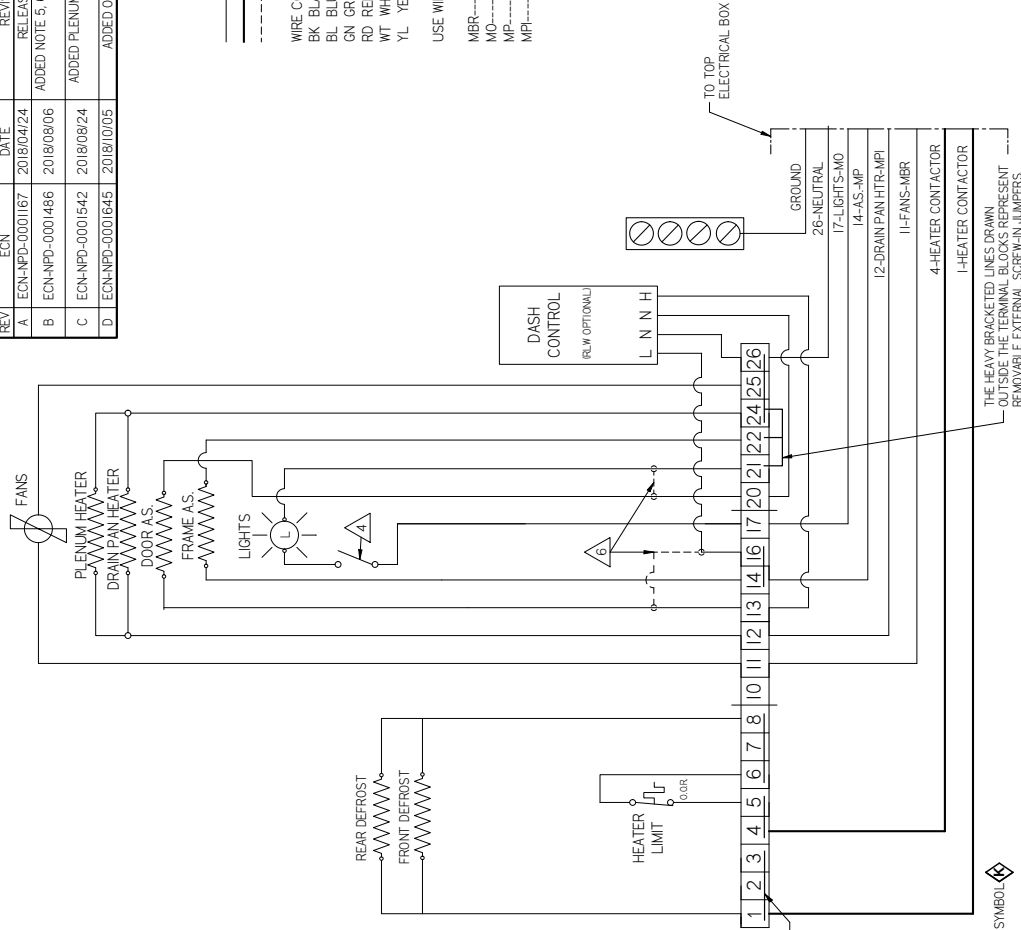
REVISION HISTORY		REVISION DESCRIPTION	REV BY	CHKD BY	APPR BY
A	ECN-NPD-0001167	2018/04/24 RELEASED TO PRODUCTION	MDL	AGA	MDL
B	ECN-NPD-0001486	2018/08/06 ADDED NOTE 5, 6 & 3067844, 6X, 4X WAS 3X, 2X	MDL	AGA	MDL
C	ECN-NPD-0001542	2018/08/24 ADDED PLENUM HEATERS & UPDATED WIRE ROUTING	MDL	AGA	MDL
D	ECN-NPD-0001645	2018/10/05 ADDED OPERATION REFERENCE	MDL	MDL	MDL

\_\_\_\_\_ FACTORY WIRE AWG 14, UNLESS SPECIFIED  
 \_\_\_\_\_ FACTORY WIRE AWG 12  
 - - - - - FIELD INSTALLED WIRE

**WIRE COLOR**  
 BK BLACK  
 BL BLUE  
 GN GREEN  
 RD RED  
 WT WHITE  
 YL YELLOW

USE WIRE MARKER AT EACH END OF WIRE AS FOLLOWS

MBR----->MARKER BROWN FANS  
 MO----->MARKER ORANGE LIGHTS  
 MP----->MARKER PURPLE ANTISWEAT  
 MPI----->MARKER PINK DRAIN PAN HTR



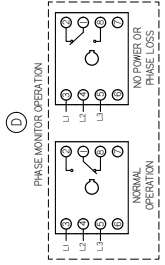
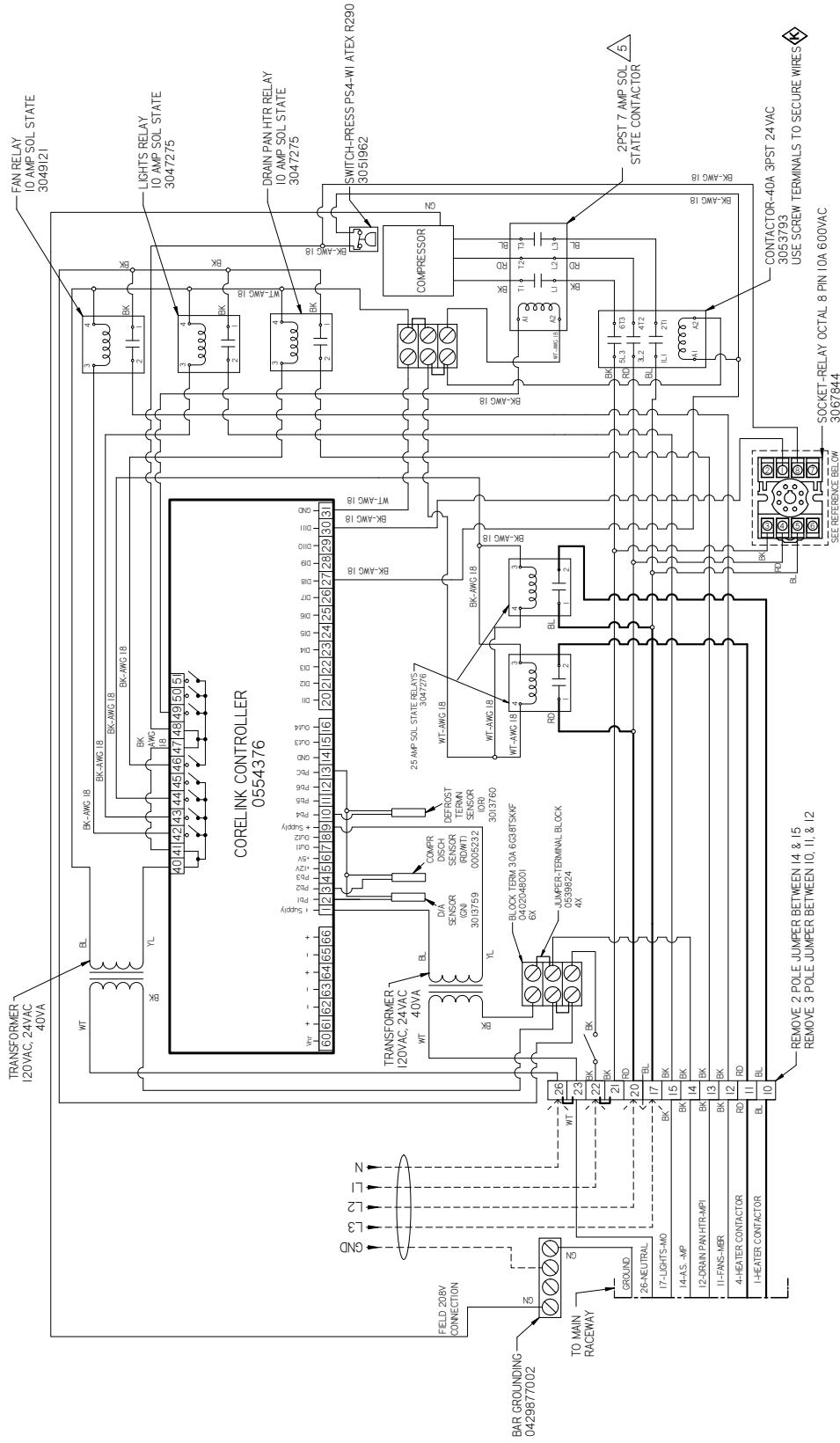
3060959 D

- NOTES:
1. APPLICABLE STANDARDS / SPECIFICATIONS  
ASME Y14.5M-1994, DIMENSIONS AND TOLERANCES
  2. KEY PRODUCT CHARACTERISTICS PER EPR-0006 & IDENTIFIED WITH SYMBOL
  3. REF 3038431
  4. LIGHT SWITCH MAY NOT BE PROVIDED WITH CASE FOR CERTAIN CONFIGURATIONS
  5. ALL WIRES GETTING INSIDE UNIT TO THE CONTACTOR MUST USE FORK TERMINALS 0383151 OR 0383152
  6. ALL WIRES GETTING INSIDE UNIT TO THE CONTACTOR MUST USE FORK TERMINALS 0383151 OR 0383152
  7. IF DASH CONTROLLER IS NOT USED, THE DOOR A.S. ARE WIRED TO TERMINALS 16 & 21



# CoreLink Propane Wiring - 2 & 3 Door

# RLN-W Frozen Food / Ice Cream



NOTES:  
 1. APPL CABLE STANDARDS / SPECIFICATIONS ASME Y14.5M-1994 DIMENSIONS AND TOLERANCES  
 2. KEY PRODUCT CHARACTERISTICS PER EPR-0006 & IDENTIFIED WITH SYMBOL  
 3. REF. 3038431  
 4. LIGHT SWITCH MAY NOT BE PROVIDED WITH CASE FOR CERTAIN CONFIGURATIONS  
 5. ALL WIRES GETTING INSERTED INTO THE CONTACTOR MUST USE FORK TERMINALS 0383151 OR 0383152  
 6. TORQUE ON TERMINAL SCREWS NOT TO EXCEED 12 IN-LLBS  
 7. IF DASH CONTROLLER IS NOT USED THE DOOR A.S. ARE WIRED TO TERMINALS 16 & 21

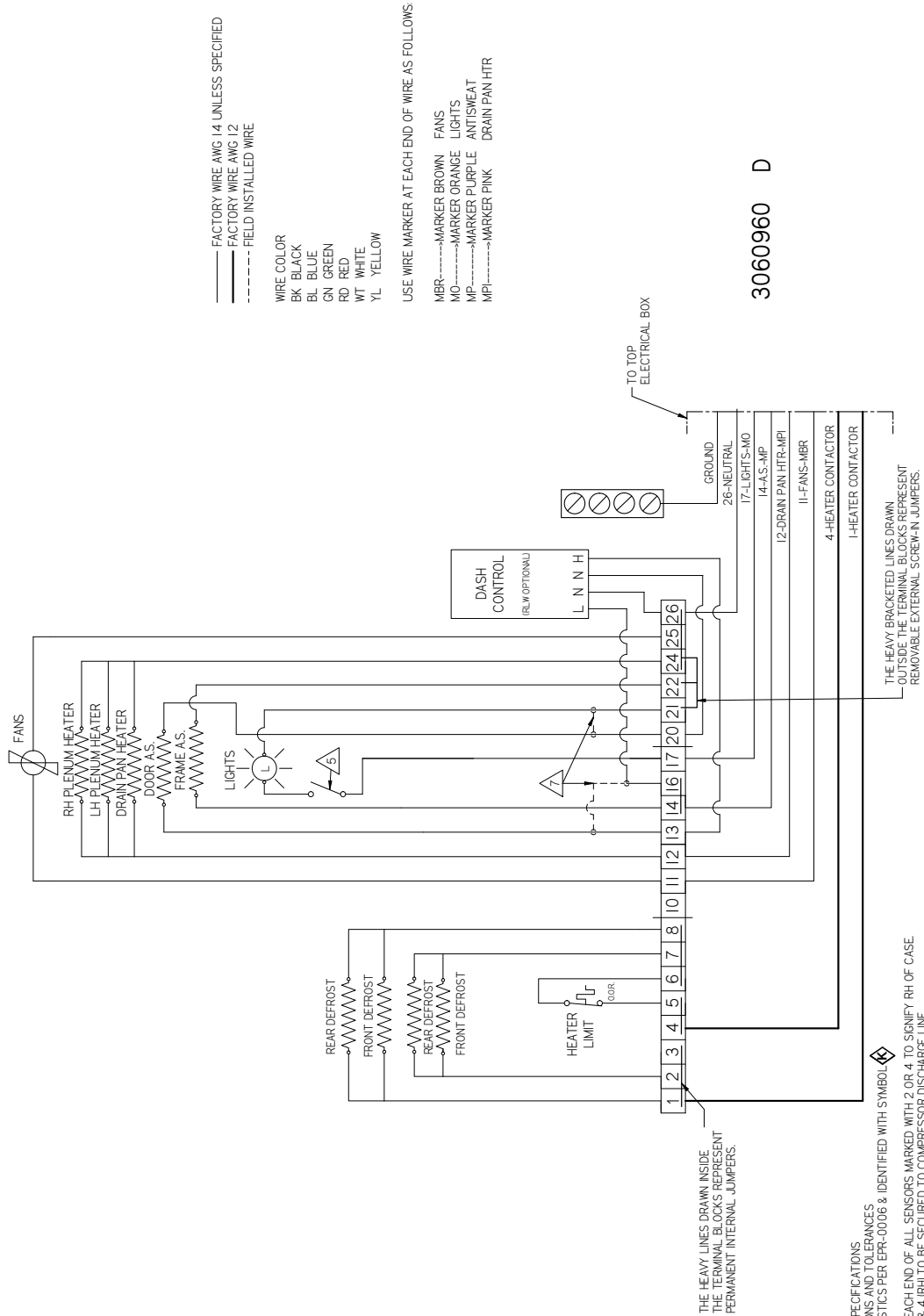
3060959 D

# RLN-W

## Frozen Food / Ice Cream

# CoreLink Propane

## Wiring - 4 Door



3060960 D

—— FACTORY WIRE AWG 14 UNLESS SPECIFIED  
 - - - - FACTORY WIRE AWG 12  
 - - - - FIELD INSTALLED WIRE

WIRE COLOR  
 BK BLACK  
 BL BLUE  
 GN GREEN  
 RD RED  
 WT WHITE  
 YL YELLOW

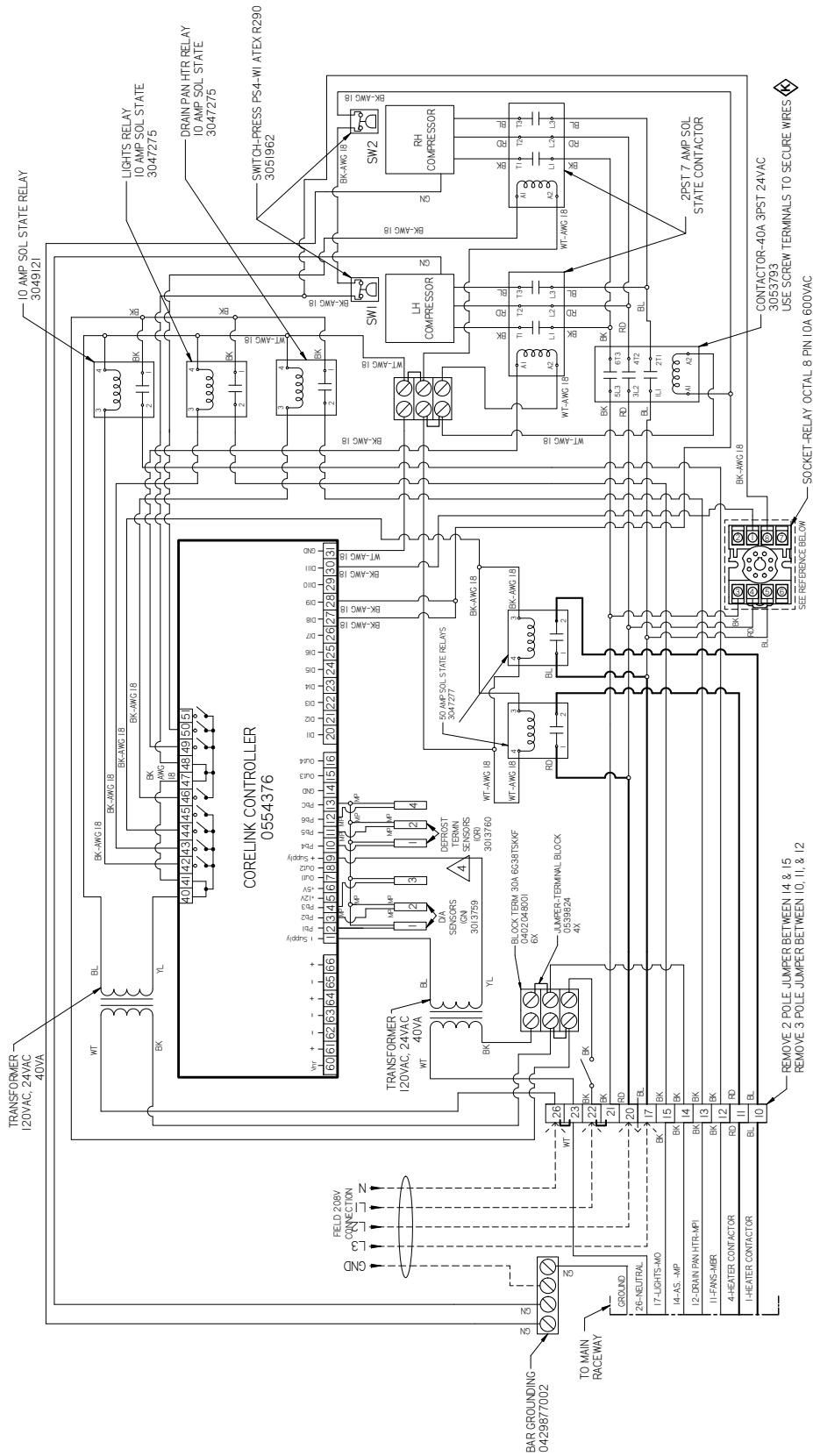
USE WIRE MARKER AT EACH END OF WIRE AS FOLLOWS

MBR-----MARKER BROWN FANS  
 MO-----MARKER ORANGE LIGHTS  
 MP-----MARKER PURPLE ANTISWEAT  
 MPI-----MARKER PINK DRAIN PAN HTR

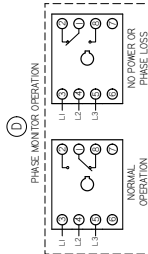
- NOTES:
1. APPLICABLE STANDARDS / SPECIFICATIONS  
 ASME Y14.5M-1994, DIMENSIONS AND TOLERANCES
  2. KEY PRODUCT CHARACTERISTICS PER EPR-0006 & IDENTIFIED WITH SYMBOL
  3. REF 3038431
  4. ADD PURPLE MARKERS AT EACH END OF ALL SENSORS MARKED WITH 2 OR 4 TO SIGNIFY RH OF CASE
  5. 0005232 SENSORS 3 ILH & 4 IRLH TO BE SECURED TO COMPRESSOR DISCHARGE LINE
  6. LIGHT SWITCH MAY NOT BE PROVIDED WITH CASE FOR CERTAIN CONFIGURATIONS
  7. ALL WIRES GETTING INSERTED INTO THE CONTACTORS MUST USE FORK TERMINALS 0383151 OR 0383152
  8. TORQUE ON TERMINAL SCREWS NOT TO EXCEED 12 IN-LBS
  9. IF DASH CONTROLLER IS NOT USED THE DOOR AS ARE WIRED TO TERMINALS 16 & 21

# CoreLink Propane Wiring - 4 Door

# RLN-W Frozen Food / Ice Cream



3060960 D



1. APPLICABLE STANDARDS / SPECIFICATIONS  
ASME Y14.5M-1994, DIMENSIONS AND TOLERANCES
2. REF. PRODUCT CHARACTERISTICS PER EPR-0006 & IDENTIFIED WITH SYMBOL
3. ADD PURPLE MARKERS AT EACH END OF ALL SENSORS MARKED WITH 2 OR 4 TO SIGNIFY RH OF CASE. ADD PURPLE MARKERS 3, LH1 & 4 RH1 TO BE SECURED TO COMPRESSOR DISCHARGE LINE. LIGHT SWITCH MAY NOT BE PROVIDED WITH CASE FOR CERTAIN CONFIGURATIONS. ALL WIRES GETTING INSERTED INTO THE CONTACTORS MUST USE FORK TERMINALS 0383151 OR 03883152 TORQUE ON TERMINAL SCREWS NOT TO EXCEED 12 IN-LBS. IF DASH CONTROLLER IS NOT USED THE DOOR A.S. ARE WIRED TO TERMINALS 16 & 21

# RLN-W

## Frozen Food / Ice Cream

# CoreLink Propane

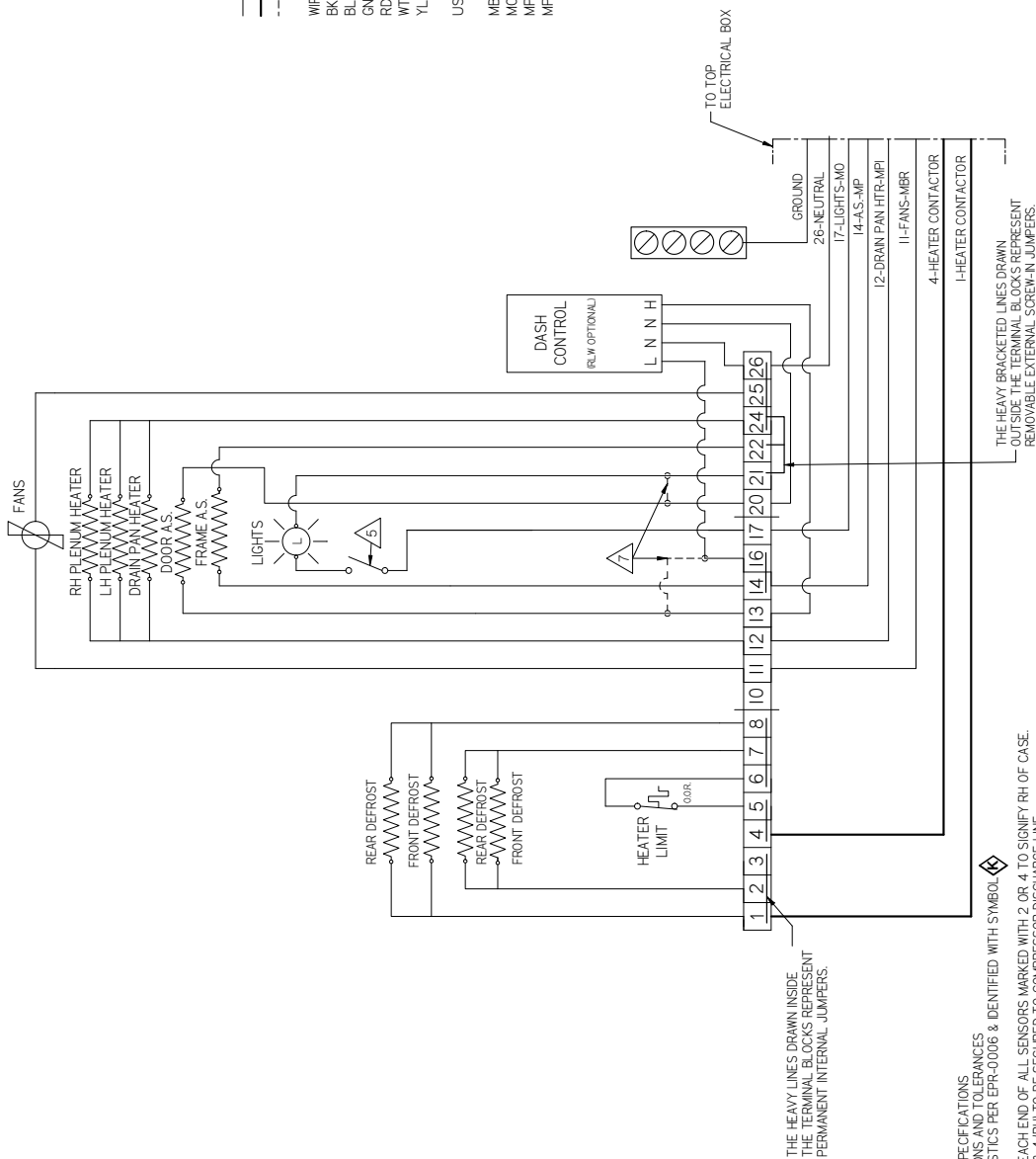
## Wiring - 5 Door

— FACTORY WIRE AWG 14 UNLESS SPECIFIED  
 - - - FACTORY WIRE AWG 12  
 - - - - - FIELD INSTALLED WIRE

WIRE COLOR  
 BK BLACK  
 BL BLUE  
 GN GREEN  
 RD RED  
 WT WHITE  
 YL YELLOW

USE WIRE MARKER AT EACH END OF WIRE AS FOLLOWS

MBR-----MARKER BROWN FANS  
 MO-----MARKER ORANGE LIGHTS  
 MP-----MARKER PURPLE ANTISWEAT  
 MPI-----MARKER PINK DRAIN PAN HTR

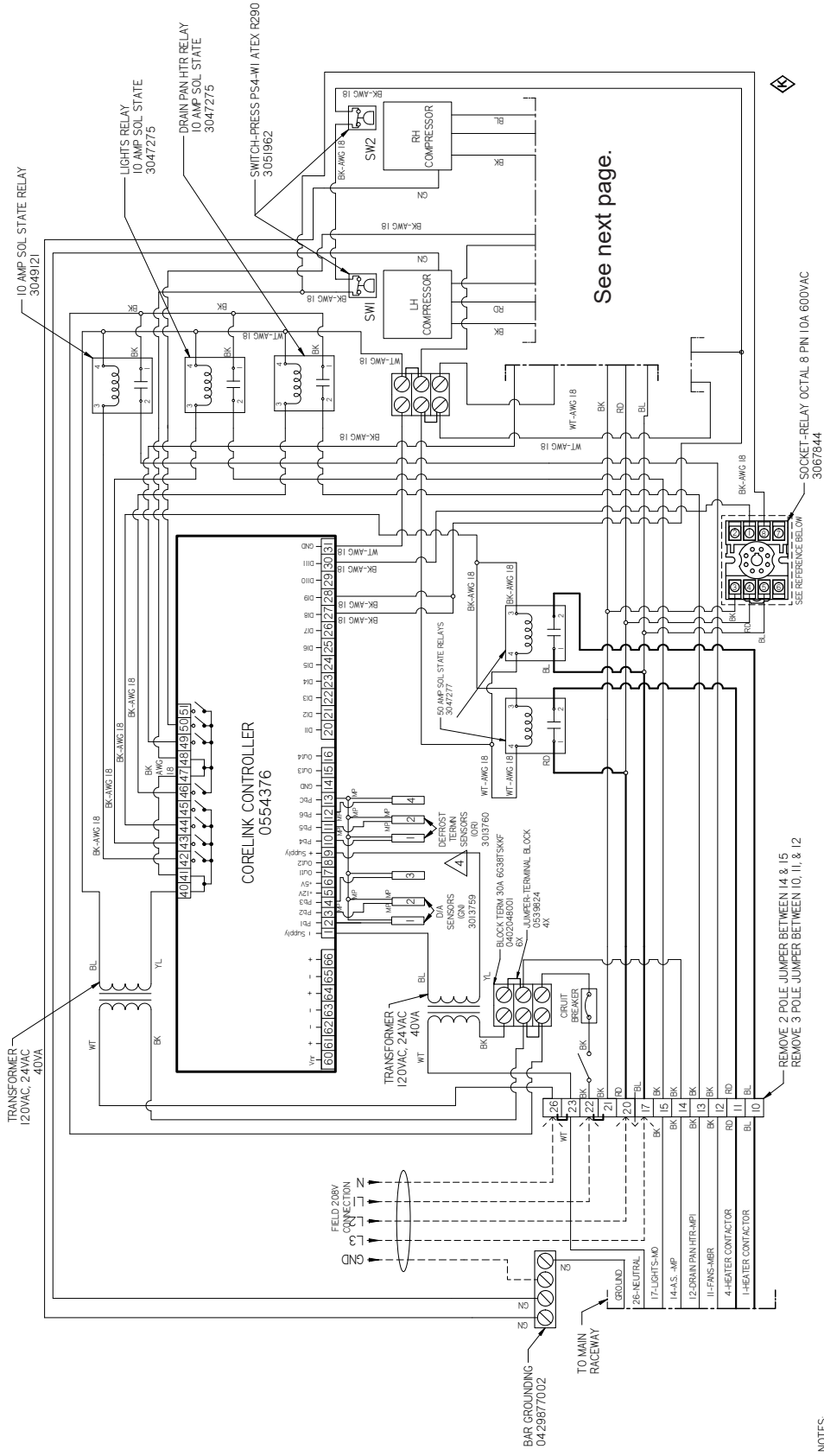


- NOTES:
1. APPLICABLE STANDARDS / SPECIFICATIONS
  2. ASME Y14.5M-1994 DIMENSIONS AND TOLERANCES
  3. REF 3038431
  4. ADD PURPLE MARKERS AT EACH END OF ALL SENSORS MARKED WITH 2 OR 4 TO SIGNIFY RH OF CASE.
  5. 0005232 SENSORS 3 (LH) & 4 (RH) TO BE SECURED TO COMPRESSOR DISCHARGE LINE.
  6. LIGHT SWITCH MAY NOT BE PROVIDED WITH CASE FOR CERTAIN CONFIGURATIONS
  7. ALL WIRES GETTING INSERTED INTO THE CONTACTORS MUST USE FORK TERMINALS 0.383151 OR 0.383152. TORQUE ON TERMINAL SCREWS NOT TO EXCEED 12 IN-LBS.
  8. IF DASH CONTROLLER IS NOT USED THE DOOR A.S. ARE WIRED TO TERMINALS 16 & 21

3082783\_A

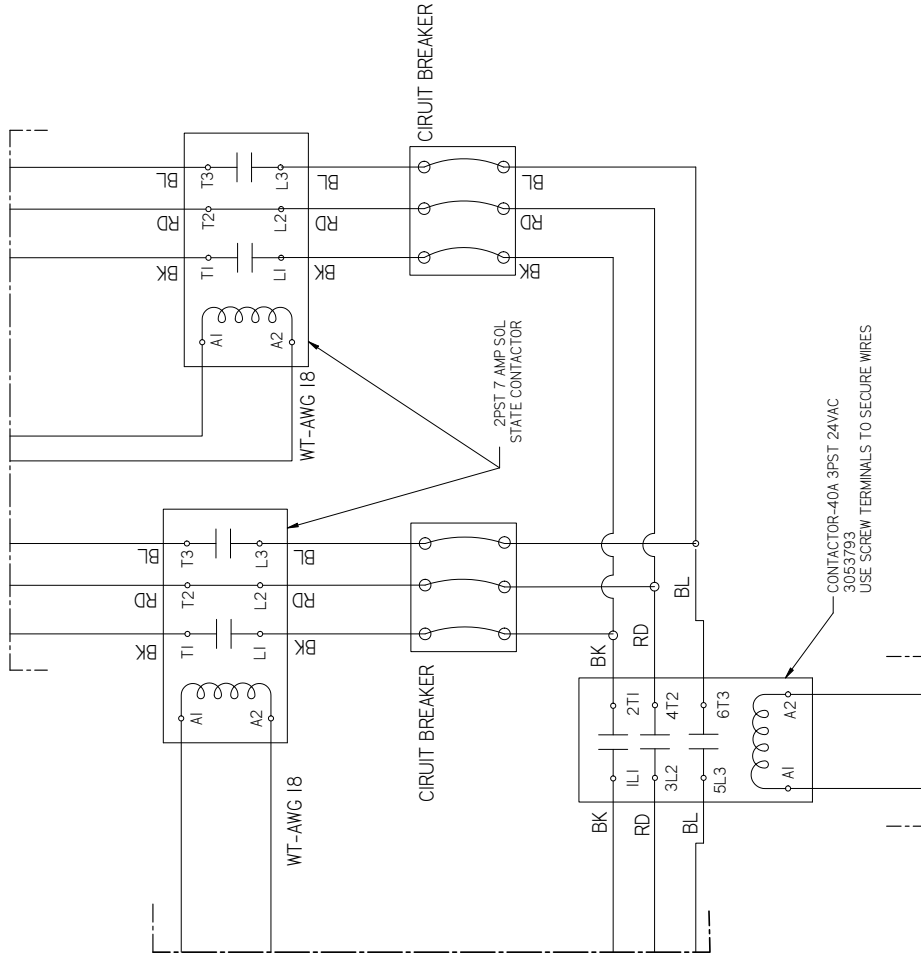
# CoreLink Propane Wiring - 5 Door

# RLN-W Frozen Food / Ice Cream



See next page.

3082783\_A

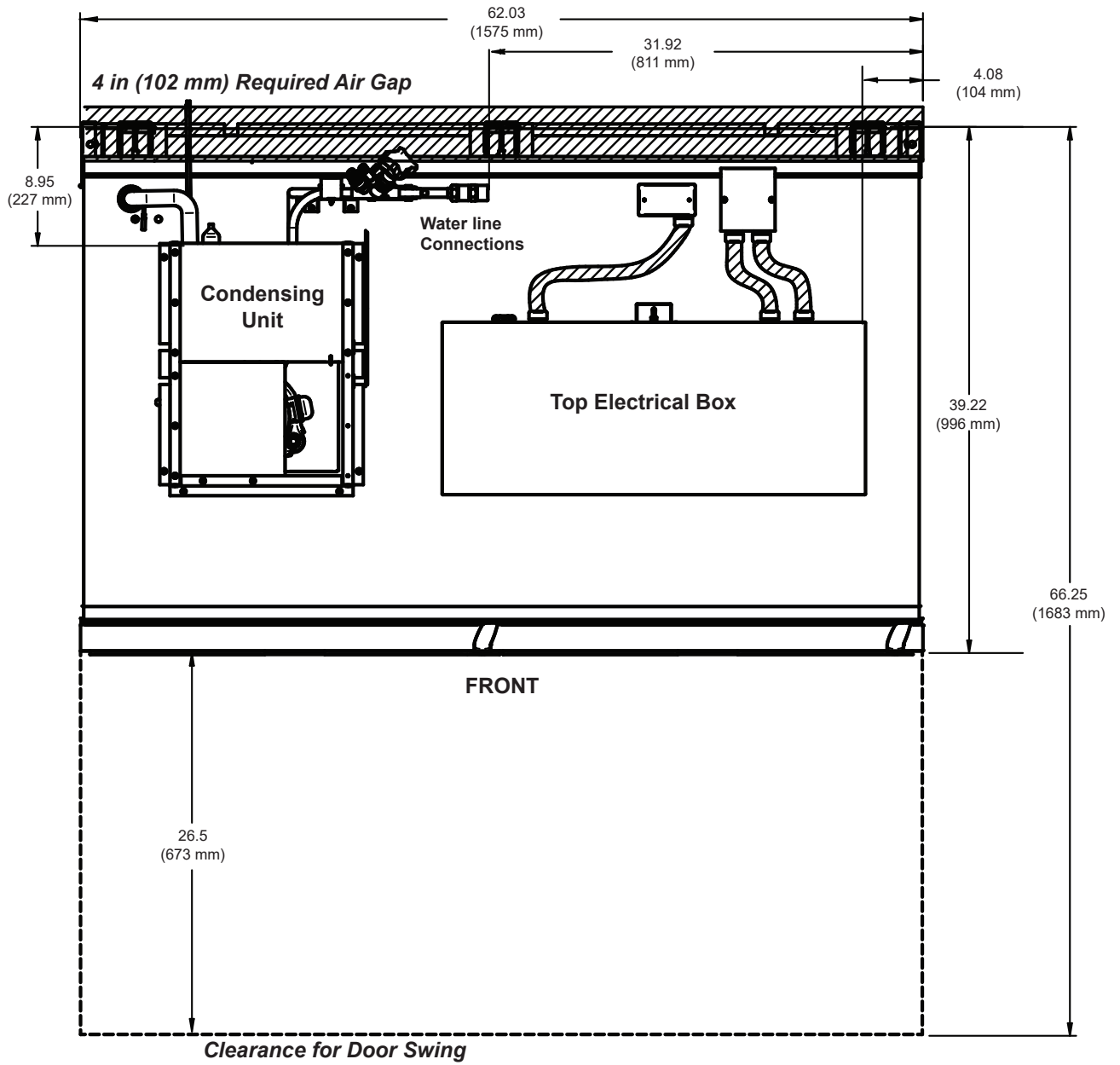


3082783\_A

- NOTES:
1. APPLICABLE STANDARDS / SPECIFICATIONS  
ASME Y14.5M-1994 DIMENSIONS AND TOLERANCES
  2. KEY PRODUCT CHARACTERISTICS PER EPR-0006 & IDENTIFIED WITH SYMBOL
  3. REF 3038431
  4. ADD PURPLE MARKERS AT EACH END OF ALL SENSORS MARKED WITH 2 OR 4 TO SIGNIFY RH OF CASE
  5. 0005232 SENSORS 3, 1LH & 4, 1RH TO BE SECURED TO COMPRESSOR DISCHARGE LINE
  6. LIGHT SWITCH MAY NOT BE PROVIDED WITH CASE FOR CERTAIN CONFIGURATIONS
  7. ALL WIRES GETTING INSERTED INTO THE CONTACTORS MUST USE FORK TERMINALS 0383151 OR 0383152
  8. TORQUE ON TERMINAL SCREWS NOT TO EXCEED 12 IN.-LBS.
  9. IF DASH CONTROLLER IS NOT USED THE DOOR A.S. ARE WIRED TO TERMINALS 16 & 21

**RLN-W  
Top Views**

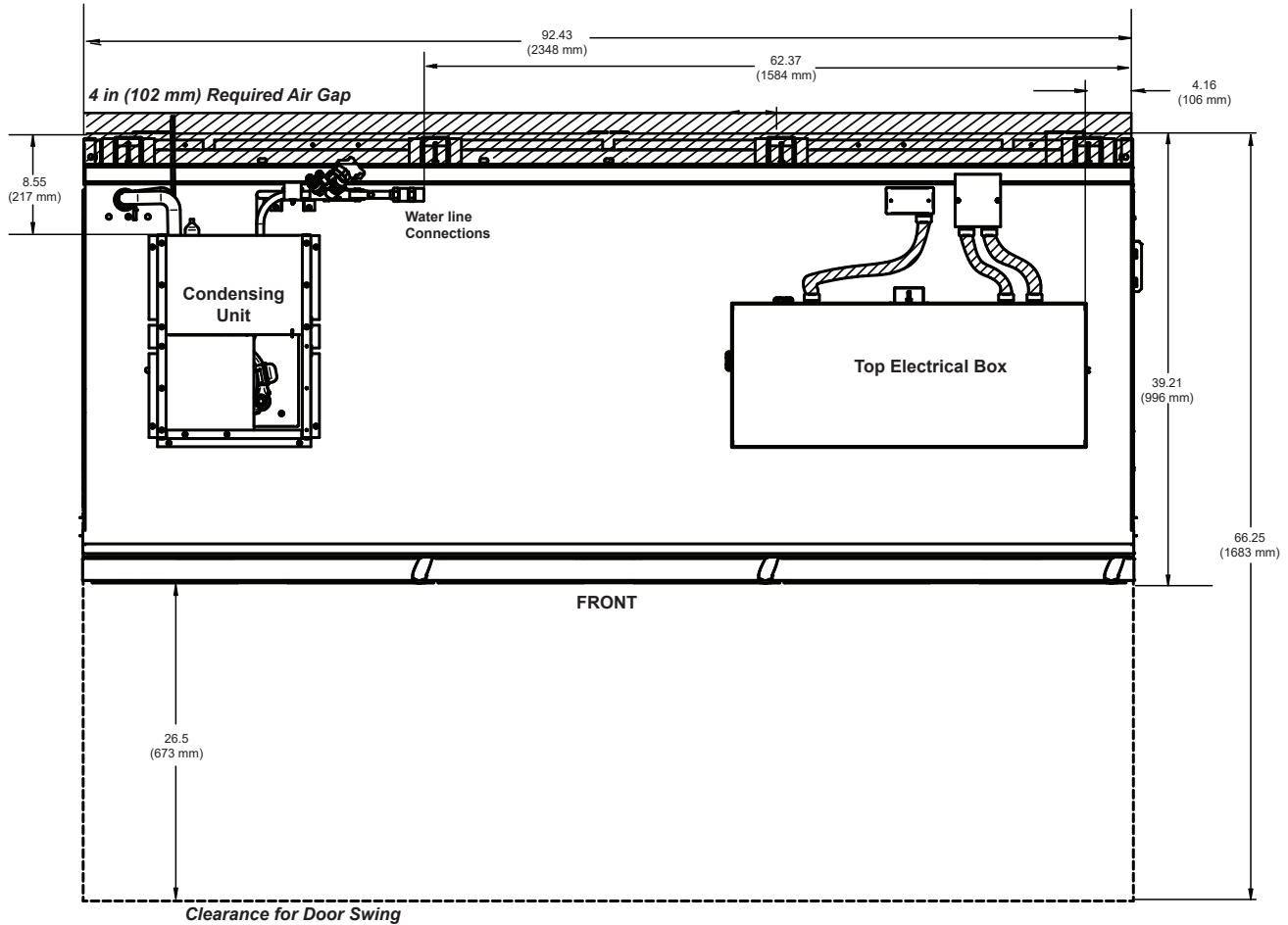
**RLN-W  
Frozen Food / Ice Cream**



**RLN2W TOP VIEW**

**RLN-W**  
Frozen Food / Ice Cream

**RLN-W**  
Top Views

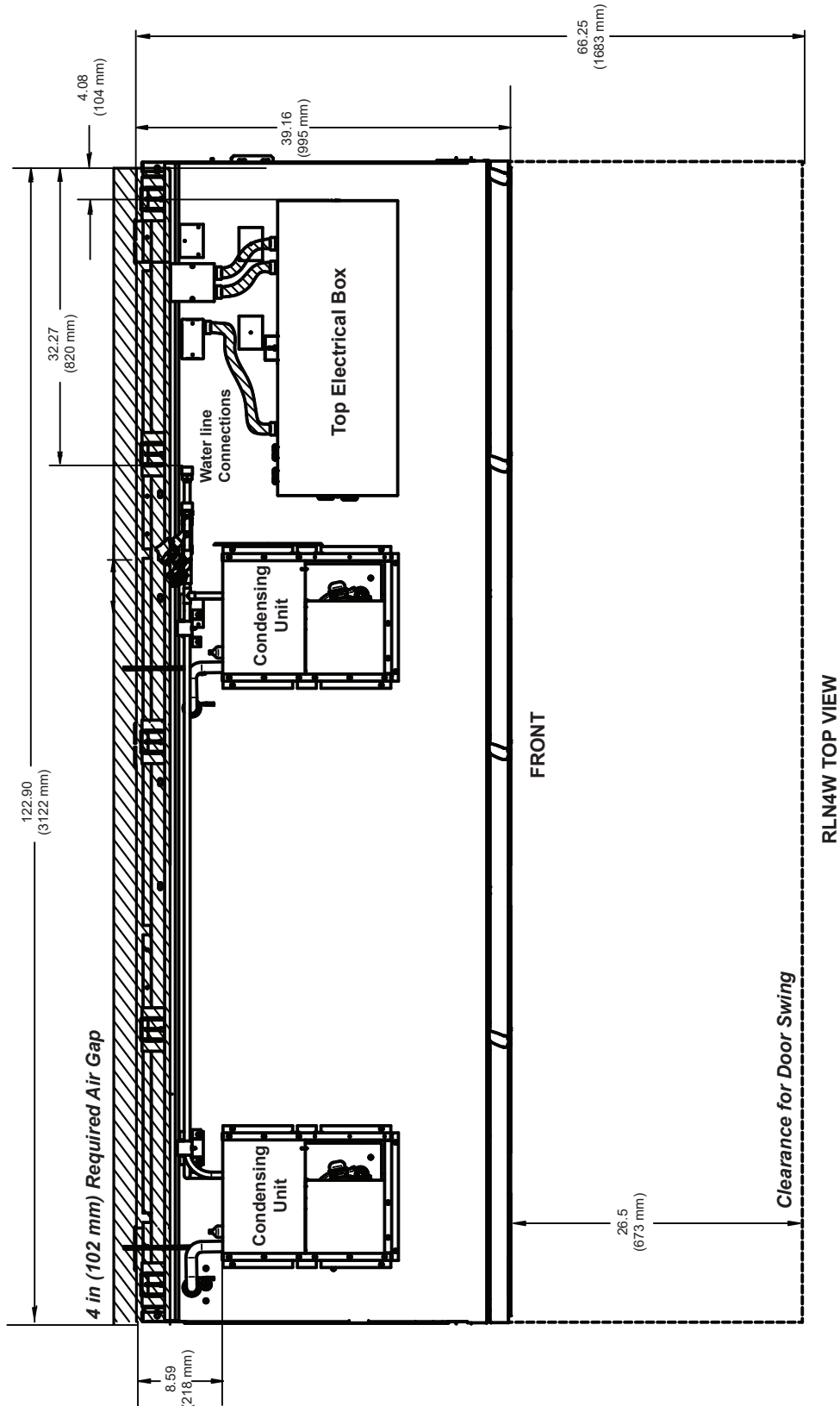


RLN3W TOP VIEW



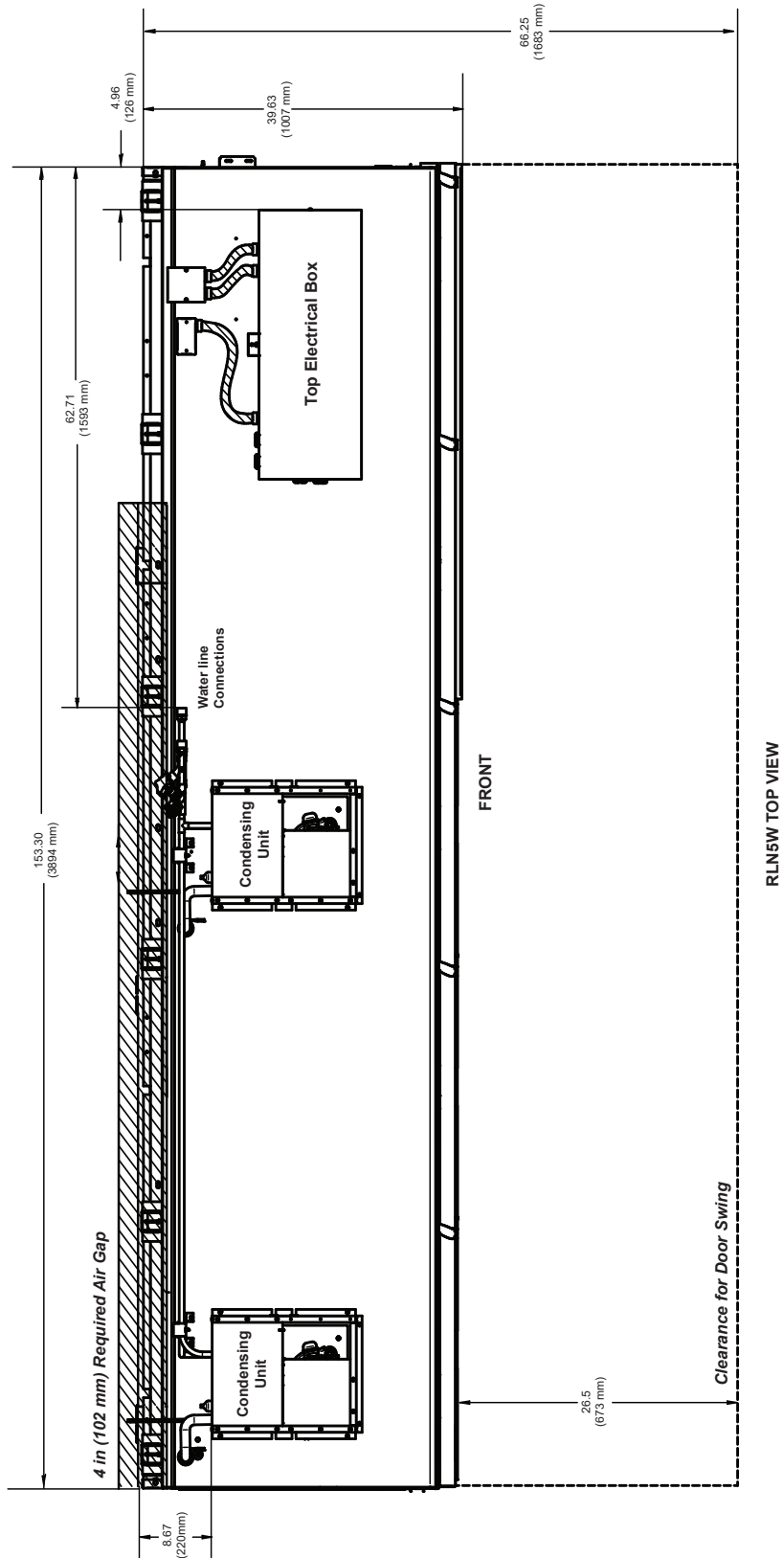
**RLN-W  
Top Views**

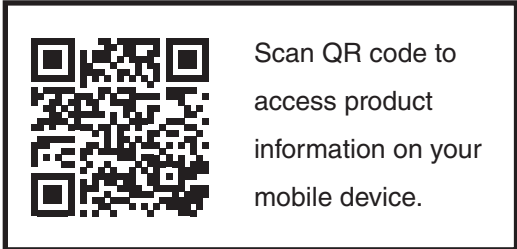
**RLN-W  
Frozen Food / Ice Cream**



**RLN-W**  
Frozen Food / Ice Cream

**RLN-W**  
Top Views





---

**Revision History**

Revision A: January 2019: New Document