

# HUSSMANN®

# microDS™

## RM-W

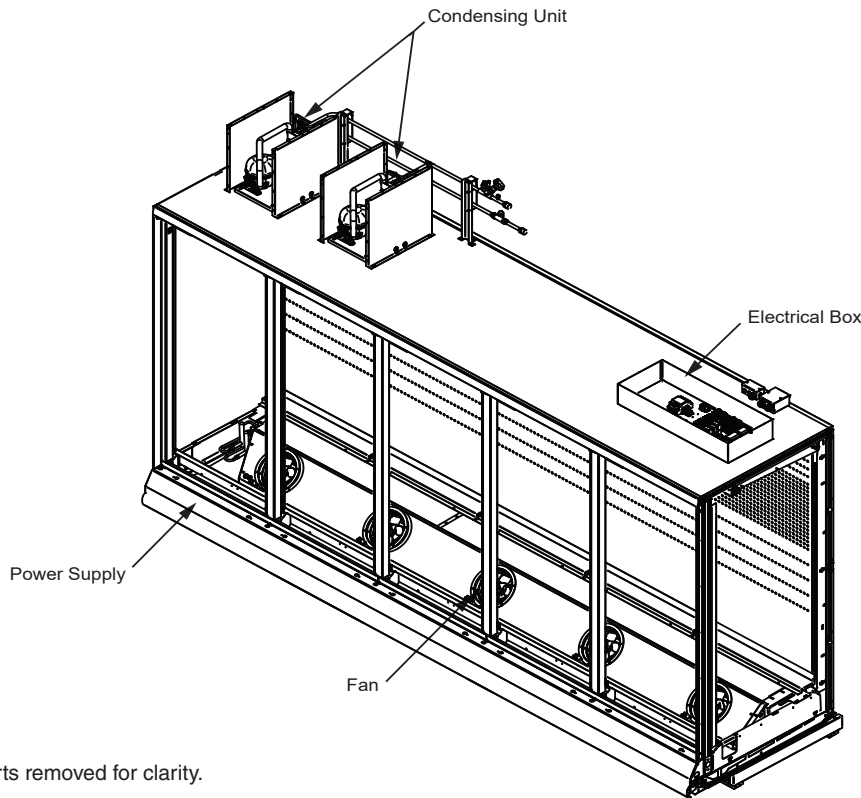
with INNOVATOR Doors  
or INNOVATOR III Doors  
Water-Cooled  
Self-Contained  
R290 (Propane)

Merchandise Data Sheet

**P/N 3094076\_A**

**UL EPH® Certified**

November 2019



Portion of parts removed for clarity.

5 door merchandiser shown.



### UL EPH Certification

This merchandiser model is manufactured to meet ANSI/SCC Standards requirements for construction, materials, and cleanability.

Performance Data	Page 2	Shelf Options	Page 6
Product Data (AHRI Statistics)	Page 2	Wiring Diagrams	Page 7
Cross Section	Page 3	Computing Refrigeration and Electrical Load	Page 15
Plan View	Page 4	QR Code for Parts and Product Information	Page 15
Electrical Loads	Page 5	Revision History	Page 15
Estimated Shipping Weights	Page 6		

Data sheet-Reach-in-RM-W

We reserve the right to change or revise specifications and product design in connection with any feature of our products. Such changes do not entitle the buyer to corresponding changes, improvements, additions or replacements for equipment previously sold or shipped.

# RM-W

Reach-in  
Medium Temperature

## Refrigeration Data <sup>1</sup>

RM-W			
Application		Optimal Shelf Life	AHRI Rating
Temperature	Discharge Air °F (°C)	34 (1.11)	37 (2.78)

### Notes:

1. All data based on store temperature and humidity that does not exceed NSF Type 1 ambient conditions of 75°F and 55% relative humidity, except where noted.
2. Water supply design conditions are 50 to 115°F (10 to 40°C).

## Compressor Data

Total Heat of Rejection	BTU/Hr
2 Dr	1,830
3 Dr	2,355
4 Dr	3,660
5 Dr	4,185

## Cooling Water Pressure Drop <sup>4</sup>

	PSI
2 Dr	2.5
3 Dr	2.5
4 Dr	2.5
5 Dr	2.5

## Glycol/Water Flow Rate <sup>5</sup>

	GPM	LPM
2 Dr	1.0	3.8
3 Dr	1.0	3.8
4 Dr	1.0	3.8
5 Dr	1.5	5.7

## Defrost Data

Frequency (hours between defrost)	24
	RM-W
Time (minutes)	60
Temp Termination (°F)	N/A
Type	Off - Time
Defrost Water <sup>3</sup>	.36 lb/dr/day (.15 kg/m)

## Cooling Water Design TD

10°F

<sup>4</sup> Auto-Balancing Valve requires a minimum of 2 PSI to operate. Subtract 2 PSI if the Auto-Balancing Valve is not supplied.

## Charge Per Unit <sup>6</sup>

2 Dr	0.33 lb	5.3 oz	150 g
3 Dr	0.29 lb	4.6 oz	130 g
4 Dr	0.33 lb	5.3 oz	150 g
5 Dr	0.33 lb	5.3 oz	150 g

<sup>5</sup> Use a pre-mixed inhibited glycol solution. If the mixing is to be done on site, use only distilled or de-ionized water (do not use city water).

<sup>6</sup> Maximum R290 charge per condensing unit = 150 g. Charge per unit per coil section.

<sup>3</sup> (± 15% based on case configuration and product loading).

## Water Connections Size

A ¾" female NPT fitting is required to connect to the ¾" male NPT fitting that is provided on top of the case for inlet and outlet water connections. Optional hose kits are available that include two 6' hoses with ¾" female NPSM fittings. Maximum working pressure of water side components: 100 psig

## Product Data

Gross Refrigerated Volume <sup>7</sup> (Cu Ft/Dr)	23.46 ft <sup>3</sup> /dr (0.66 m <sup>3</sup> /dr)
AHRI Total Display Area <sup>8</sup> (Sq Ft/Dr)	13.31 ft <sup>2</sup> /dr (1.24 m <sup>2</sup> /dr)
Shelf Area <sup>9</sup> (Sq Ft/Dr)	29.32 ft <sup>2</sup> /dr (2.72 m <sup>2</sup> /dr)

<sup>7</sup> AHRI Gross Refrigerated Volume: Refrigerated Volume/Unit of Length, ft<sup>3</sup>/dr [m<sup>3</sup>/dr]

<sup>8</sup> Computed using AHRI 1200 standard methodology: Total Display Area, ft<sup>2</sup> [m<sup>2</sup>]/Unit of Length, door

<sup>9</sup> Shelf surface area is composed of bottom deck plus standard shelf complement for this model: (5) 22-inch shelves, evenly distributed vertically.

Water-Cooled, Self-Contained, R290 Propane,  
Reach-in Merchandiser  
2, 3, 4 & 5 Door Models, 6 Display Levels

**RM-W**  
Reach-in  
Medium Temperature

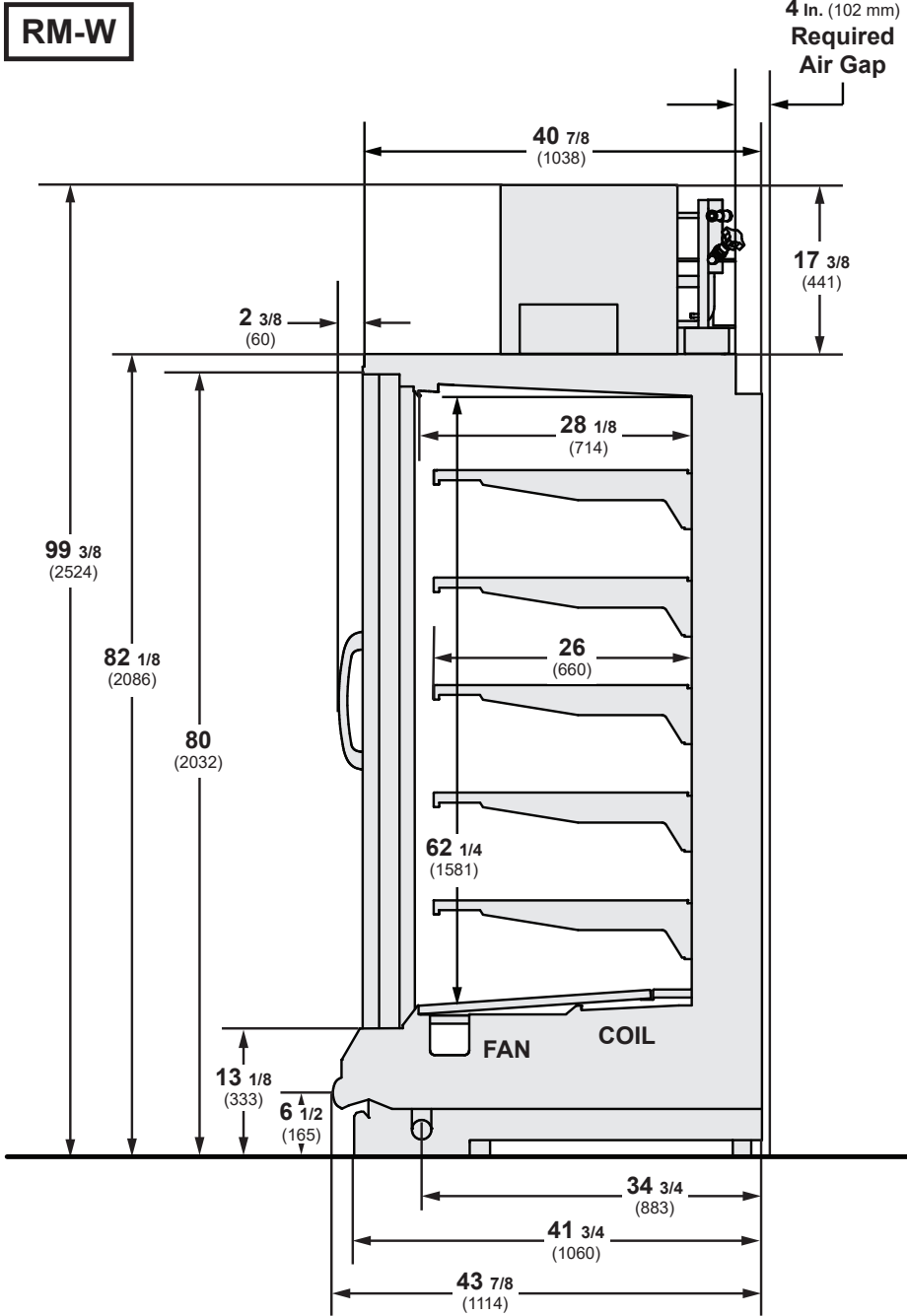
**DOE 2017**  
Energy Efficiency  
Compliant

Husmann refrigerated merchandisers configured for sale for use in the United States meet or surpass the requirements of the DOE 2017 energy efficiency standards.

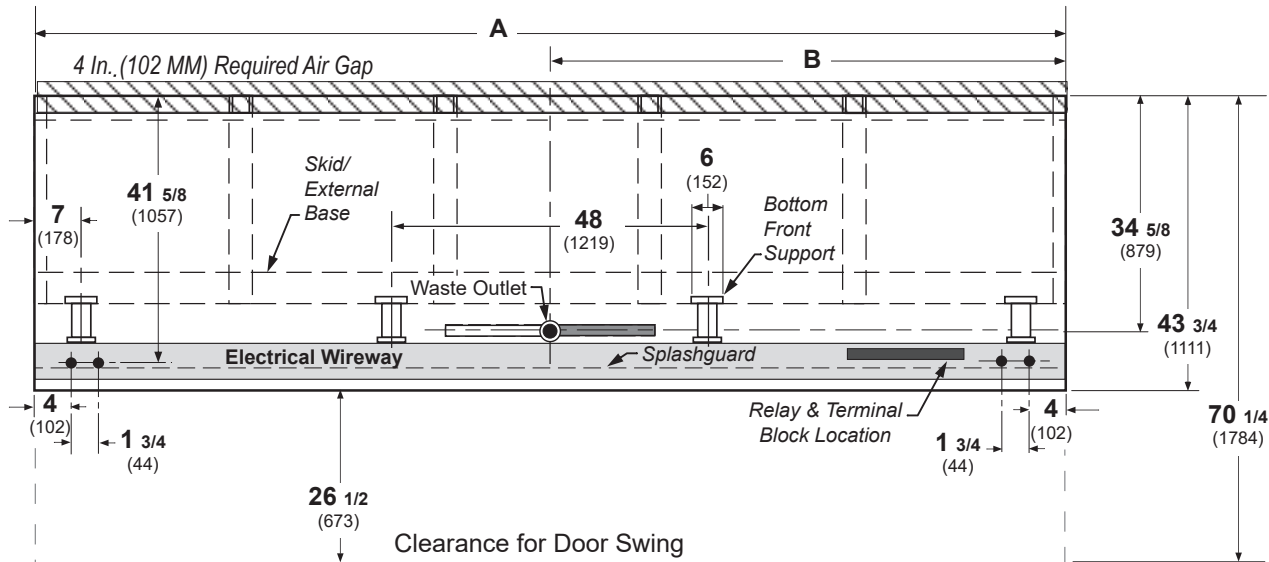
Dimensions shown as in. and (mm).

Shelf complement shown as tested:  
Five rows of shelves (26-in) spaced  
equally between bottom display pan  
and interior top panel.

4-in. between back to back  
cases.



Dimensions shown as in. and (mm).



(4 Door Model shown above)

	2 Dr	3 Dr	4 Dr	5 Dr
<b>General</b>				
(A) Case Length (without ends or partitions) Each end and insulated partition adds 2 in. (51 mm) to case line up; each window end or insulated partition adds 1 1/2 in. (38 mm).	62 (1575)	92 1/2 (2350)	122 7/8 (3121)	153 3/8 (3896)
Maximum O/S dimension of case back to front (includes bumper) (Add 26 1/2 in (673 mm) for door swing.)	43 3/4 (1111)	43 3/4 (1111)	43 3/4 (1111)	43 3/4 (1111)
Back of case to rear of splashguard	39 7/8 (1013)	39 7/8 (1013)	39 7/8 (1013)	39 7/8 (1013)
Width of Skidrail	3 3/4 (95)	3 3/4 (95)	3 3/4 (95)	3 3/4 (95)
Width of Bottom Front Support	6 (152)	6 (152)	6 (152)	6 (152)
Stub-up area between front support and splashguard	3 1/8 (79)	3 1/8 (79)	3 1/8 (79)	3 1/8 (79)
<b>Electrical Service (Field Electrical Wiring Connection)</b>				
RH End of case to center of Electrical Wiring Connection (top of case)	13 3/4 (349)	13 3/4 (349)	13 3/4 (349)	13 3/4 (349)
Back outside of case to center of Electrical Wiring Connection	5 1/2 (140)	5 1/2 (140)	5 1/2 (140)	5 1/2 (140)
<b>Waste Outlets (with required drain extension)</b>				
(B) RH End of case to the center of waste outlet	23 7/8 (606)	54 1/4 (1378)	46 1/4 (1175)	76 5/8 (1946)
Back O/S of case to center of waste outlet	34 5/8 (879)	34 5/8 (879)	34 5/8 (879)	34 5/8 (879)
Schedule 40 PVC drip pipe	1 1/4 (32)	1 1/4 (32)	1 1/4 (32)	1 1/4 (32)
<b>Water Seal</b>				
Edge of water seal to center of waste outlet	13 (330)	13 (330)	13 (330)	13 (330)
**NOTE: Field installed water seal outlets, tees, and connectors are shipped with the case.				

## Electrical Data

<b>Number of Fans</b> 8.25-in.	<b>2 dr</b>	<b>3 dr</b>	<b>4 dr</b>	<b>5 dr</b>						
	2	3	4	5						
		<b>Amperes</b>					<b>Watts</b>			
<b>Evaporator Fan</b> 120V 50/60Hz	<b>2 dr</b>	<b>3 dr</b>	<b>4 dr</b>	<b>5 dr</b>	<b>2 dr</b>	<b>3 dr</b>	<b>4 dr</b>	<b>5 dr</b>	<b>5 dr</b>	
	0.60	0.90	1.20	1.50	36	54	72	90		
<b>Frame Anti-sweat Heaters (on fan circuit)</b> 120V 50/60Hz	0.39	0.59	0.79	0.99	47	71	94	118		
<b>Condensing Unit (120V, 1 ph, 60 Hz) Standard</b> <b>NOTE:</b> One compressor can start at a time.										
Compressor RLA	3.5		3.5		7.0		7.0			
Compressor LRA	14.9/unit		14.9/unit		14.9/unit		14.9/unit			
<b>Merchandiser Circuit Requirements (120V, 1 Ph, 60 Hz)</b>										
Total Amps	4.8	5.4	9.0	9.7						
Maximum Current Capacity (MCA)	6.3	7.0	11.2	11.9						
Maximum Over Current Protection (MOPD)	15	15	15	15						
<b>Optional Electrical Plug - NEMA</b>					5-15P/120V					

**NEMA Plug**



**NEMA 5-15P**

## Lighting

Only lighting configurations that are compliant with the U.S. Dept. of Energy (DOE) 2017 regulation are available for sale for use in the U.S.A.

### STANDARD LIGHTING

<b>EcoShine II</b> 120V	<b>2 Dr</b>	<b>3 Dr</b>	<b>4 Dr</b>	<b>5 Dr</b>	<b>2 Dr</b>	<b>3Dr</b>	<b>4 Dr</b>	<b>5 Dr</b>
	0.31	0.46	0.62	0.77	37.1	55.6	74.2	92.7

### OPTIONAL LIGHTING

<b>EcoShine II</b> [22 W] 120V	<b>2 Dr</b>	<b>3 Dr</b>	<b>4 Dr</b>	<b>5 Dr</b>	<b>2 Dr</b>	<b>3Dr</b>	<b>4 Dr</b>	<b>5 Dr</b>
	0.36	0.52	0.68	0.84	43.2	62	81	100

<b>GE Illumination</b> 120V	<b>2 Dr</b>	<b>3 Dr</b>	<b>4 Dr</b>	<b>5 Dr</b>	<b>2 Dr</b>	<b>3Dr</b>	<b>4 Dr</b>	<b>5 Dr</b>
	0.30	0.45	0.60	0.75	36	54	72	90

# RM-W

Reach-in  
Medium Temperature

## ENDS or PARTITIONS

Each standard end and each insulated partition adds 2 in. (38 mm) to case line up.

## PHYSICAL DATA

Merchandiser Drip Pipe (in.) 1 1/4  
Schedule 40 PVC

## ESTIMATED SHIPPING WEIGHT †

Case	2 Dr	3 Dr	4 Dr	5 Dr	Solid End (each)
lb (kg)	1047 (475)	1345 (610)	1595 (769)	1874 (895)	55 (25)

† Actual weights will vary according to optional kits included.

## Shelf Options

Approved shelf sizes for standard (horizontal, 2-3 position brackets) displays:

22-inch  
24-inch  
26-inch

Contact engineering for non-standard display recommendations.

Optimal number of Shelves: 5 per door

Maximum number of Shelves: 5 per door

Standard shelf complement for test purposes: (5 per door) 26-inch shelves, evenly distributed vertically

# CoreLink Propane Wiring - 2 & 3 Door

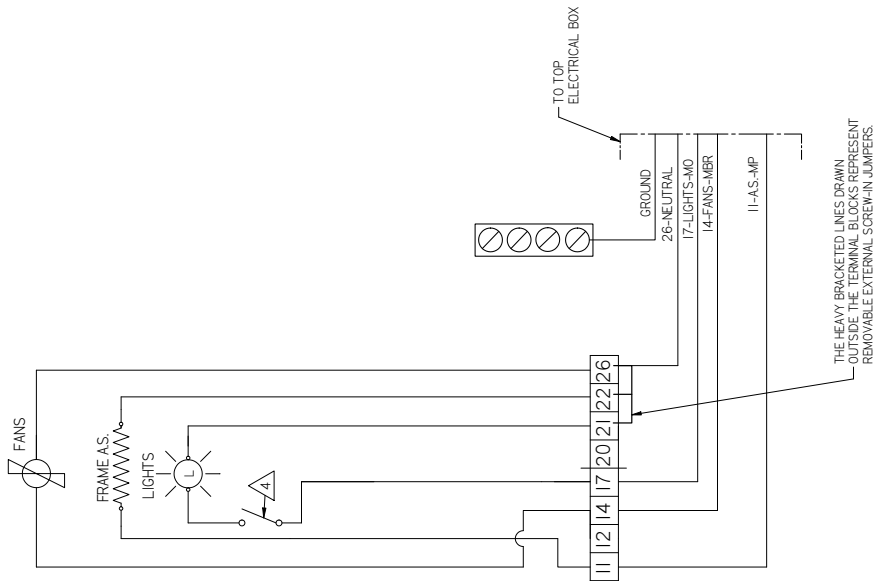
**RM-W**  
Reach-in  
Medium Temperature

—— FACTORY WIRE AWG 14 UNLESS SPECIFIED  
 —— FACTORY WIRE AWG 12  
 - - - - - FIELD INSTALLED WIRE

WIRE COLOR  
 BK BLACK  
 BL BLUE  
 GN GREEN  
 RD RED  
 WT WHITE  
 YL YELLOW

USE WIRE MARKER AT EACH END OF WIRE AS FOLLOWS:

MBR-----MARKER BROWN FANS  
 MO-----MARKER ORANGE LIGHTS  
 MP-----MARKER PURPLE ANTISWEAT  
 MPI-----MARKER PINK DRAIN PAN HTR



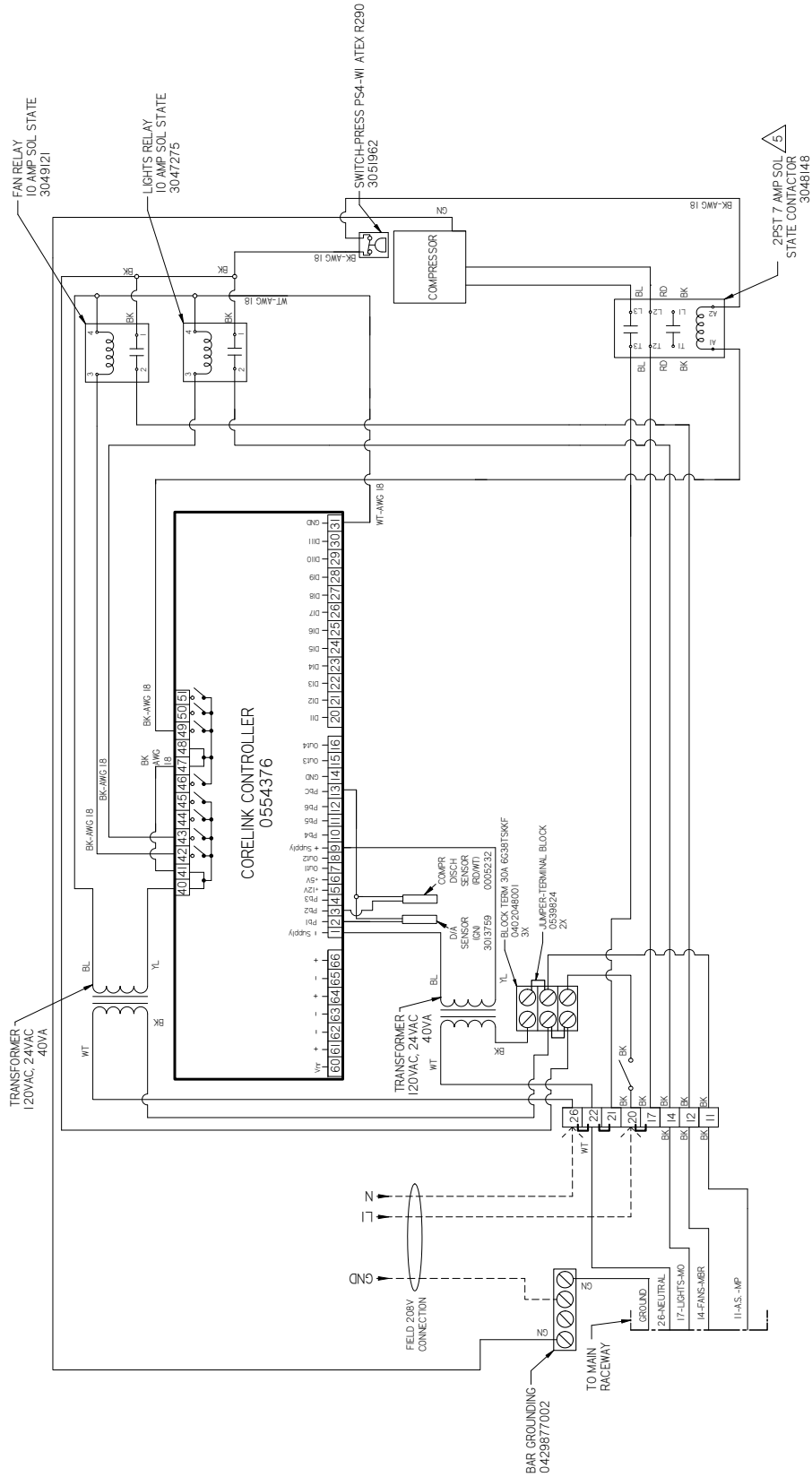
3071974\_A

NOTES:

- ⚠ LIGHT SWITCH MAY NOT BE PROVIDED WITH CASE FOR CERTAIN CONFIGURATIONS
- ⚠ ALL WIRES GETTING INSERTED INTO THE CONTACTOR MUST USE FORK TERMINALS 0383151 OR 0383152
- ⚠ TORQUE ON TERMINAL SCREWS NOT TO EXCEED 12 IN-LBS

**RM-W**  
Reach-in  
Medium Temperature

**CoreLink Propane  
Wiring - 2 & 3 Door**



3071974\_A

NOTES:

- ▲ LIGHT SWITCH MAY NOT BE PROVIDED WITH CASE FOR CERTAIN CONFIGURATIONS
- ▲ ALL WIRES GETTING INSERTED INTO THE CONTACTOR MUST USE FORK TERMINALS 0363151 OR 0363152
- ▲ TORQUE ON TERMINAL SCREWS NOT TO EXCEED 12 IN-LBS



# CoreLink Propane Wiring - 4 & 5 Door

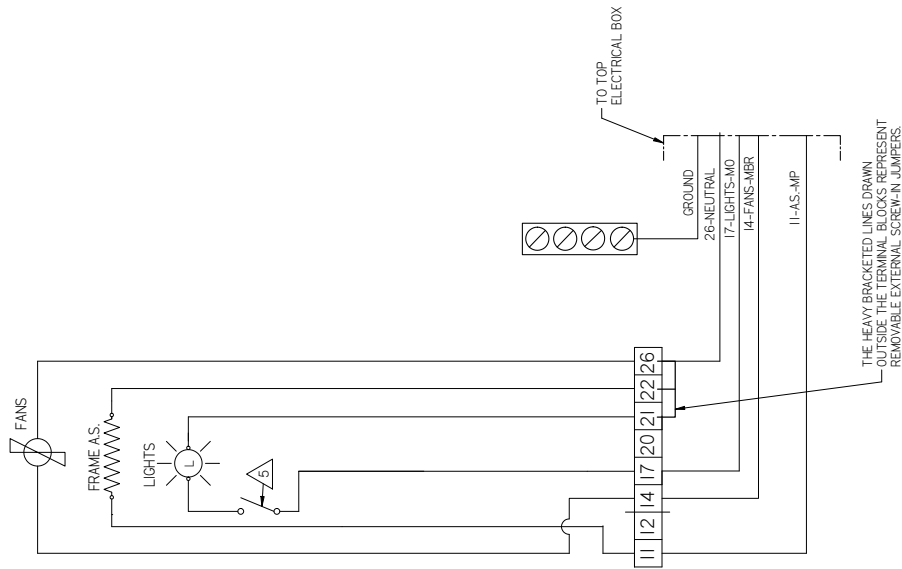
**RM-W**  
Reach-in  
Medium Temperature

— FACTORY WIRE, AWG 14 UNLESS SPECIFIED  
 — FACTORY WIRE, AWG 12  
 - - - - - FIELD INSTALLED WIRE

WIRE COLOR  
 BK BLACK  
 BL BLUE  
 GN GREEN  
 RD RED  
 WT WHITE  
 YL YELLOW

USE WIRE MARKER AT EACH END OF WIRE AS FOLLOWS:

MBR----->MARKER BROWN FANS  
 MO----->MARKER ORANGE LIGHTS  
 MP----->MARKER PURPLE ANTISWEAT  
 MPI----->MARKER PINK DRAIN PAN HTR



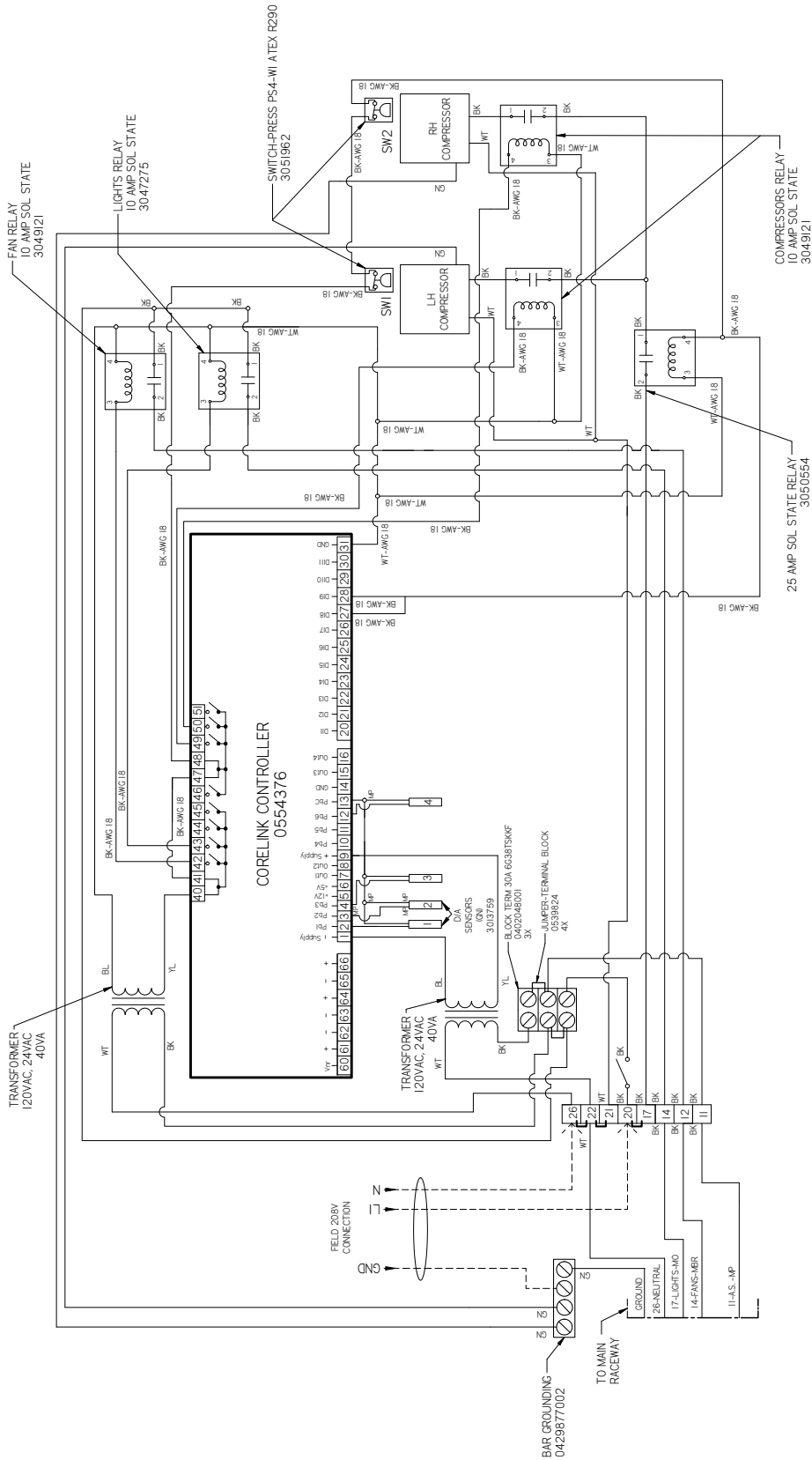
3071975 B

NOTES:

- ⚠ ADD PURPLE MARKERS AT EACH END OF ALL SENSORS MARKED WITH 2 OR 4 TO SIGNIFY RH OF CASE
- 0005232 SENSORS 3 LH & 4 RH TO BE SECURED TO COMPRESSOR DISCHARGE LINE
- ⚠ LIGHT SWITCH MAY NOT BE PROVIDED WITH CASE FOR CERTAIN CONFIGURATIONS
- ⚠ ALL WIRES GETTING INSERTED INTO THE CONTACTORS MUST USE FORK TERMINALS 0383151 OR 0383152
- ⚠ TORQUE ON TERMINAL SCREWS NOT TO EXCEED 12 IN-LBS

**RM-W**  
Reach-in  
Medium Temperature

**CoreLink Propane  
Wiring - 4 & 5 Door**

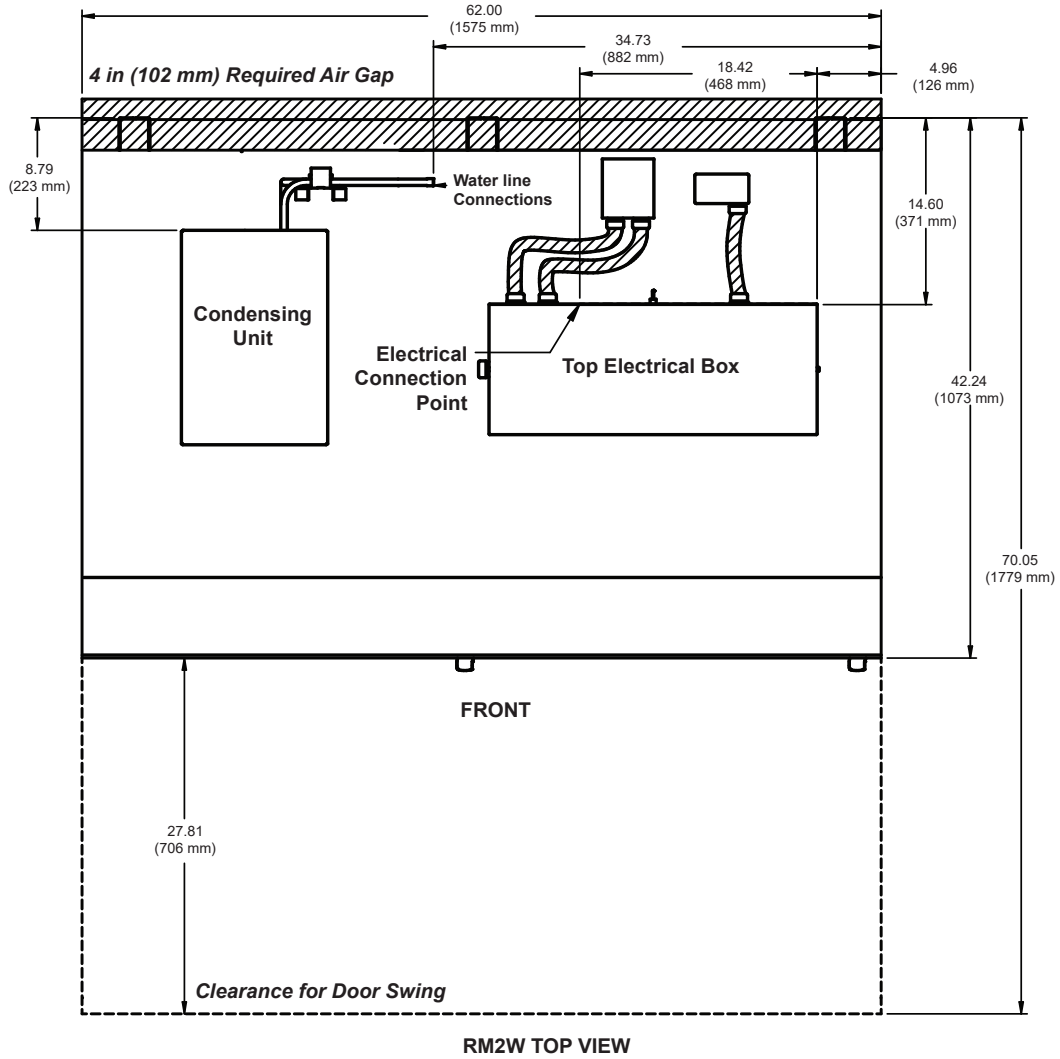


3071975\_B

- NOTES
- ▲ ADD PURPLE MARKERS AT EACH END OF ALL SENSORS MARKED WITH 2 OR 4 TO SIGNIFY RH OF CASE
  - ▲ 0005232 SENSORS 3 LH & 4 RH TO BE SECURED TO COMPRESSOR DISCHARGE LINE
  - ▲ LIGHT SWITCH MAY NOT BE PROVIDED WITH CASE FOR CERTAIN CONFIGURATIONS
  - ▲ ALL WIRES GETTING INSERTED INTO THE CONTACTORS MUST USE FORK TERMINALS 0383151 OR 0383152
  - ▲ TORQUE ON TERMINAL SCREWS NOT TO EXCEED 12 IN-LBS

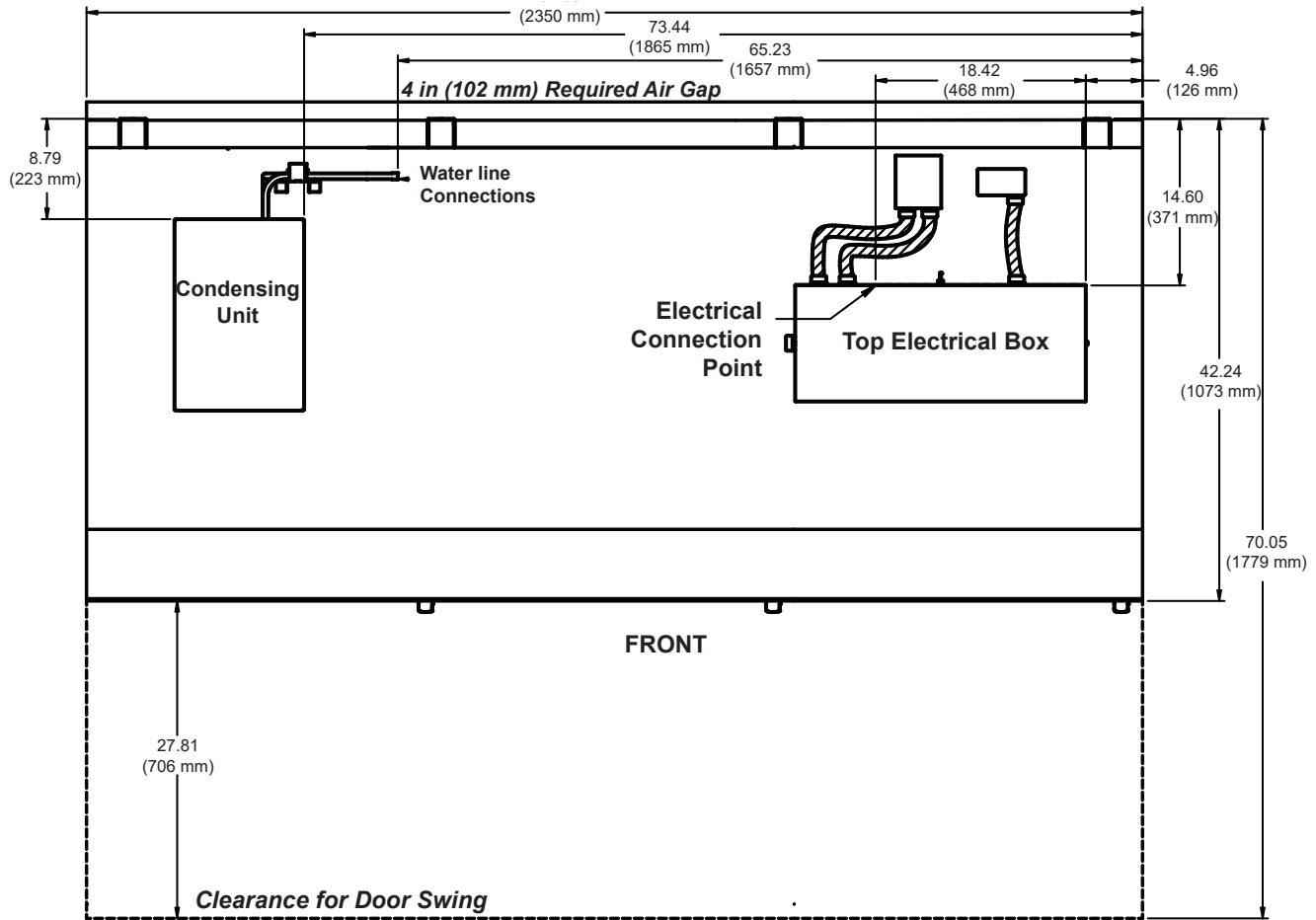
**RM-W  
Top Views**

**RM-W  
Reach-in  
Medium Temperature**



**RM-W**  
Reach-in  
Medium Temperature

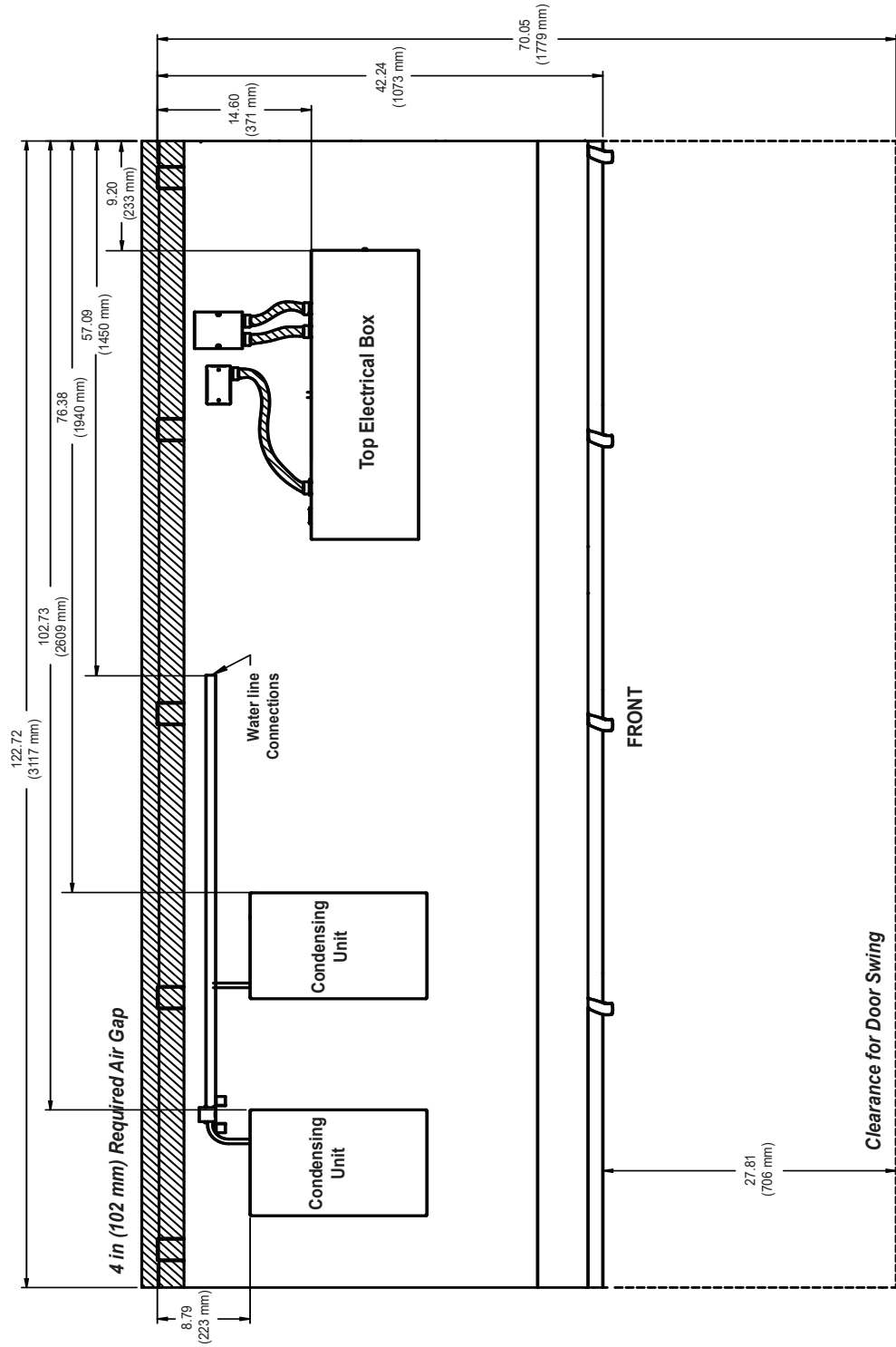
**RM-W**  
Top Views



RM3W TOP VIEW

**RM-W  
Top Views**

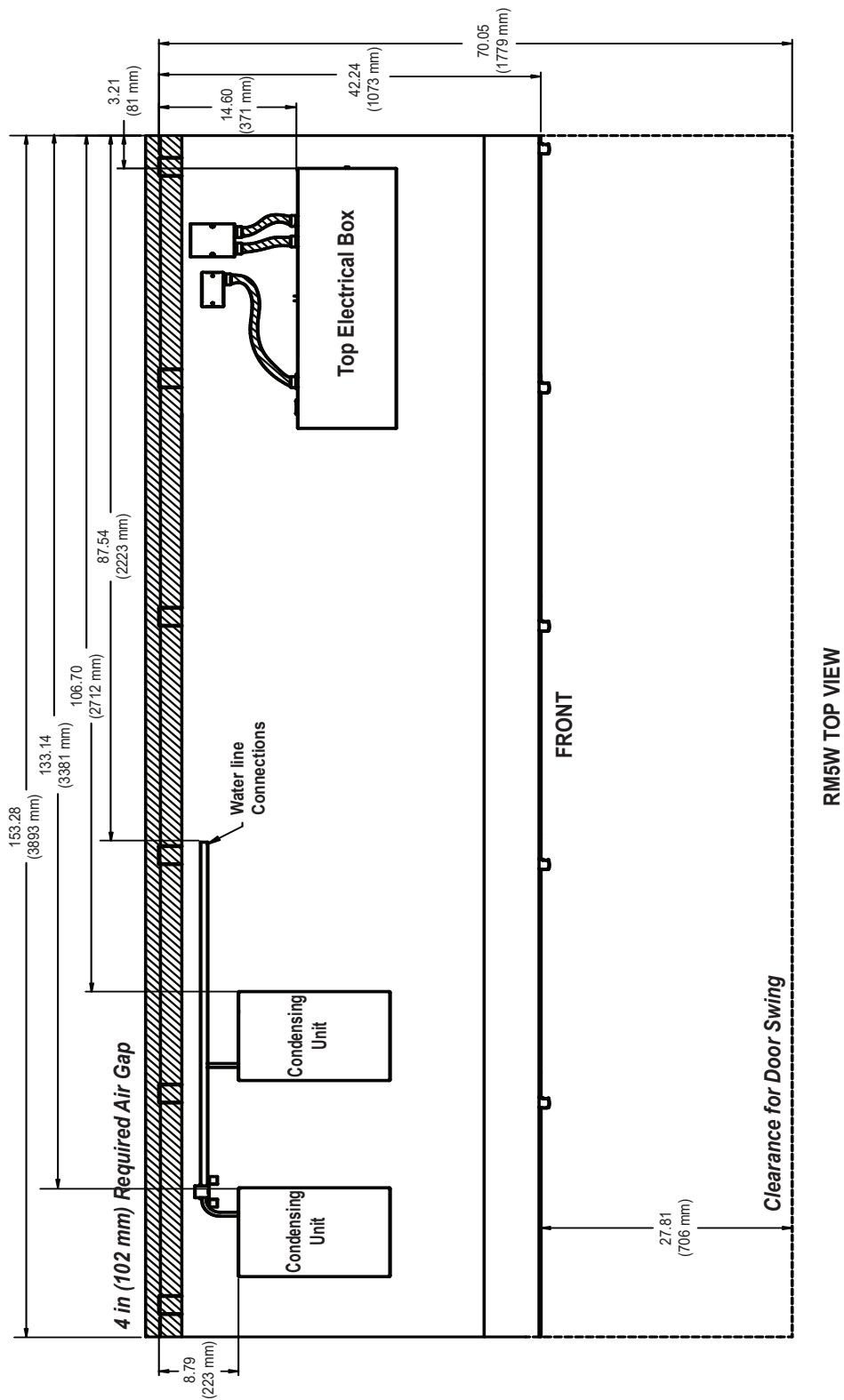
**RM-W**  
Reach-in  
Medium Temperature

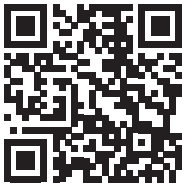


RM4W TOP VIEW

**RM-W**  
Reach-in  
Medium Temperature

**RM-W**  
Top Views





Scan the QR code on your mobile device to access additional product information or order parts.

Parts may also be ordered at:

**parts.husmann.com**

**Call toll free: 1.855.487.7778**

---

## Revision History

Revision A: November 2019: New Document