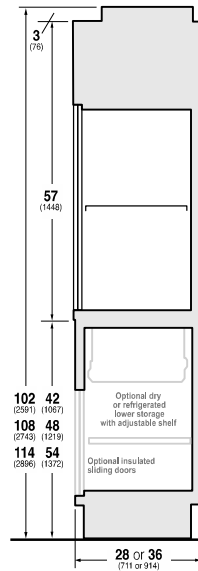
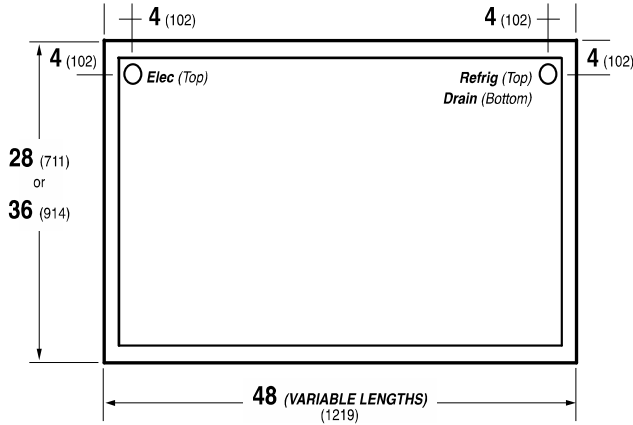


**DOE 2017**  
**Energy Efficiency**  
**Compliant**

Hussmann refrigerated merchandisers configured for sale for use in the United States meet or surpass the requirements of the DOE 2017 energy efficiency standards.



**REFRIGERATION DATA:**

CASE LENGTHS	CASE USAGE	CAPACITY TOP SECTION *** (BTU/HR/FT)		TEMPERATURE (°F)			VELOCITY (FT/MIN)
		RATING CONDITION		EVAPORATOR		DISCHARGE AIR ** (°F)	
		NSF 7	AHRI	NSF 7	AHRI	NSF 7	
4', 5', 6', 8'	MEAT	320	280	20	24	22~25	50~75

CASE LENGTHS	EST. REFG. CHR.G. (R404A) (LBS)	20°F GLYCOL 6° RISE INLET TOP		20°F GLYCOL 6° RISE INLET OPTIONAL LOWER REFRIGERATED STORAGE	
		GPM	PSI	GPM	PSI
4'	0.9	0.5	0.1	0.5	0.1
5'	1.2	0.6	0.3	0.6	0.3
6'	1.5	0.7	0.6	0.7	0.6
8'	1.9	0.9	0.4	0.9	0.4

\*\*DISCHARGE AIR TEMPERATURE MEASURED AT COIL AND VELOCITY AT DRIP TRAY GRILL

\*\*\*REFRIGERATION NOTES:

- 1) BTU'S INCLUDE CANOPY LIGHT AND TWO FRONT MULLION LIGHTS
- 2) ADD 60 BTU'S FOR OPTIONAL LED REAR MULLION LIGHTS
- 3) ADD 210 BTU'S/FT FOR LOWER STORAGE WITH GRAVITY COIL
- 4) ADD 40 BTU/HR/FT FOR OPTIONAL 36" CASE DEPTH
- 5) AHRI 1200 RATING POINT FOR ENERGY CONSUMPTION COMPARISON ONLY
- 6) USE DEW POINT FOR HIGH GLIDE REFRIGERANTS. CARE SHOULD BE TAKEN TO USE THE DEW POINT IN P/T TABLES FOR MEASURING AND ADJUSTING SUPERHEAT. ADJUST EVAPORATOR PRESSURE AS NEEDED TO MAINTAIN THE DISCHARGE AIR TEMPERATURE SHOWN.
- 7) RATING CONDITION IS NSF TYPE I, 75°F/55% RH

**REFRIGERATION DATA CONTINUED:**

ELEC. THERMOSTAT / AIR SENSOR SETTINGS			DEFROST TYPE	TIME (MIN)	DEFROST FREQUENCY (#/DAY)	TERM. TEMP (°F) COIL ONLY	DRIP TIME	DEFROST WATER (LBS/DAY/FT)
USAGE	CUT IN (°F)	CUT OUT (°F)						
MEAT	26	23	OFF TIME	40	4	45	N/A	2.8

END PANEL WIDTH KEY		
# OF END PNLS	END PNL WIDTH (IN.)	TOTAL ADDED LENGTH (IN.)
1	1.125	1.125
2	1.125	2.25

**ELECTRICAL DATA:**

**STANDARD FANS, HEATERS, LED LIGHTS (115 VOLT)**

CASE LENGTH	EVAPORATOR FANS					LED CANOPY/FRONT LIGHTS		OPTIONAL LED REAR MULLION LIGHTS		MAX. LED LOAD (W/ ALL OPTIONS)		ANTI-SWEAT HEATERS (ON FAN CIRCUIT)		CONVENIENCE OUTLETS (OPTIONAL)		
	# OF EVAP FANS	BLADE DIA. (IN.)	BLADE PITCH (°)	AMPS	WATTS	AMPS	WATTS	AMPS	WATTS	AMPS	WATTS	AMPS	WATTS	# OUTLETS	VOLTS	AMPS
4'	N/A	N/A	N/A	N/A	N/A	0.2	23	0.1	15	0.3	39	N/A	N/A	N/A	N/A	N/A
5'	N/A	N/A	N/A	N/A	N/A	0.2	26	0.1	15	0.4	41	N/A	N/A	N/A	N/A	N/A
6'	N/A	N/A	N/A	N/A	N/A	0.2	28	0.1	15	0.4	44	N/A	N/A	N/A	N/A	N/A
8'	N/A	N/A	N/A	N/A	N/A	0.3	31	0.1	15	0.4	46	N/A	N/A	N/A	N/A	N/A

**OPTIONAL HIGH OUTPUT LED LIGHTS (115 VOLT)**

CASE LENGTH	CANOPY/FRONT LIGHTS H.O. LED		OPTIONAL REAR LIGHTS		MAX. H.O. LED LOAD	
	AMPS	WATTS	AMPS	WATTS	AMPS	WATTS
4'	0.3	39	0.2	26	0.6	65
5'	N/A	N/A	N/A	N/A	N/A	N/A
6'	0.4	41	0.2	26	0.6	67
8'	0.5	52	0.2	26	0.7	78