



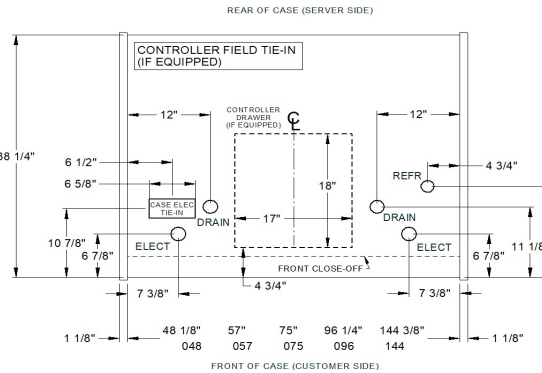
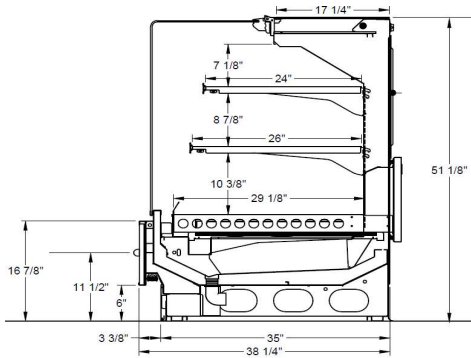
**BAKERY / CAKE SERVICE CASE WITH DRAWER**  
**HUSSMANN - DZC-V-DWR-R**

REVISION DATE

09/13/22



Hussmann refrigerated merchandisers configured for sale for use in the United States meet or surpass the requirements of the DOE 2017 energy efficiency standards.



**REFRIGERATION DATA:**

CASE LENGTHS	CASE USAGE	CAPACITY *** (BTU/HR/FT)		TEMPERATURE (°F)			VELOCITY (FT/MIN)
		RATING CONDITION		EVAPORATOR		DISCHARGE AIR ** (°F)	
		NSF 7	AHRI	NSF 7	AHRI	NSF 7	
048, 057, 075, 096, 144	BAKERY	440	440	22	22	25-27	180 - 280

CASE LENGTH	20°F GLYCOL 6° RISE	
	GPM	PSI
048	0.7	1.9
057	0.8	2.7
075	1.0	1.4
096	1.3	1.4
144	1.9	1.3

\*\*FRONT DISCHARGE AIR MEASURED INSIDE AIR CURTAIN HONEYCOMB

\*\*\*REFRIGERATION NOTES:

- 1) BTU'S INCLUDE TWO ROWS OF CANOPY LIGHTS. ADD 10 BTUS/SHELF/FT FOR EACH SHELF (LIGHT)
- 2) AHRI 1200 RATING POINT FOR ENERGY CONSUMPTION COMPARISON ONLY
- 3) USE DEW POINT FOR HIGH GLIDE REFRIGERANTS. CARE SHOULD BE TAKEN TO USE THE DEW POINT IN P/T TABLES FOR MEASURING AND ADJUSTING SUPERHEAT. ADJUST EVAPORATOR PRESSURE AS NEEDED TO MAINTAIN THE DISCHARGE AIR TEMPERATURE SHOWN.
- 4) RATING CONDITION IS NSF TYPE I, 75°F/55% RH

**REFRIGERATION DATA CONTINUED:**

ELEC. THERMOSTAT / AIR SENSOR SETTINGS			DEFROST TYPE	TIME (MIN)	DEFROST FREQUENCY (#/DAY)	TERM. TEMP (°F) COIL ONLY	DRIP TIME	DEFROST WATER (LBS/DAY/FT)
USAGE	CUT IN (°F)	CUT OUT (°F)						
DELI / BAKERY	26	23	OFF TIME	30	6	45	N/A	2.5

END PANEL WIDTH KEY		
# OF END PNLS	END PNL WIDTH (IN.)	TOTAL ADDED LENGTH (IN.)
1	1.125	1.125
2	1.125	2.25

**ELECTRICAL DATA:**

**STANDARD FANS, HEATERS, LED LIGHTS (115 VOLT)**

CASE LENGTH	EVAP					AIRSWEEP FANS				CANOPY LIGHTS LED		OPTIONAL LED SHELF LIGHTS		MAX. LED LOAD (W/ ALL OPTIONS)		ANTI-SWEAT HEATERS	
	# OF EVAP FANS	BLADE DIA. (IN.)	BLADE PITCH	AMPS	WATTS	# OF FANS	AMPS	WATTS	AMPS	WATTS	AMPS	WATTS	AMPS	WATTS	AMPS	WATTS	
048	2	6.7	25	0.2	16	1	0.04	5	0.4	41	0.4	41	0.7	82	1.0	120	
057	2	6.7	20	0.2	16	1	0.04	5	0.5	54	0.4	41	0.8	95	1.1	123	
075	3	6.7	25	0.4	24	2	0.08	9	0.6	71	0.5	61	1.1	132	1.6	180	
096	3	6.7	25	0.4	24	2	0.08	9	0.7	81	0.7	82	1.4	164	2.1	240	
144	6	6.7	25	0.7	48	3	0.12	14	1.1	122	1.1	124	2.1	246	3.1	360	

**OPTIONAL HIGH OUTPUT LED LIGHTS (115 VOLT)**

CASE LENGTH	CANOPY LIGHTS H.O. LED		OPTIONAL SHELF		MAX. H.O. LED LOAD	
	AMPS	WATTS	AMPS	WATTS	AMPS	WATTS
048	0.4	41	0.5	61	0.9	102
057	0.5	54	0.5	61	1.0	114
075	N/A	N/A	N/A	N/A	N/A	N/A
096	0.7	81	1.1	122	1.8	203
114	0.9	107	1.1	122	2.0	229
144	1.1	122	1.6	183	2.6	305

**Optional outlets**

CONVENIENCE OUTLETS		
# OUTLET	VOLTS	AMPS
1	115	15
1	115	15
1	115	15
1	115	15
1	115	15
2	115	30