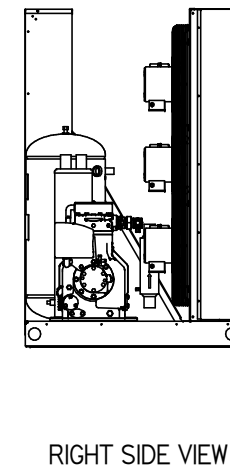
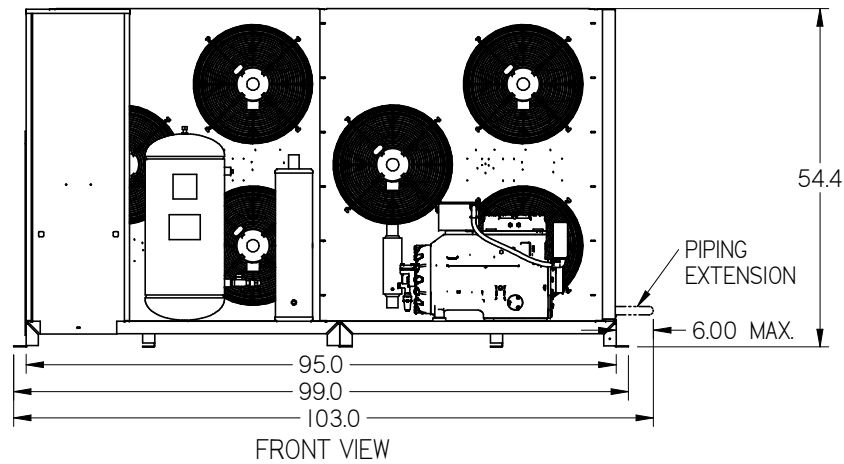
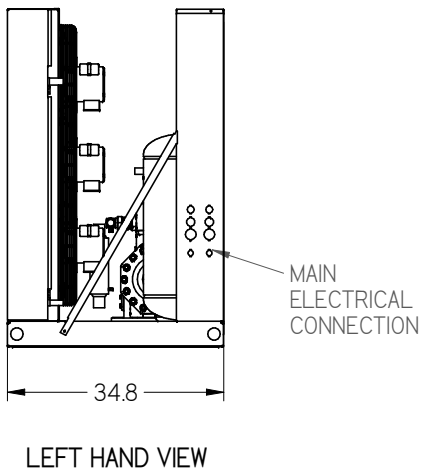
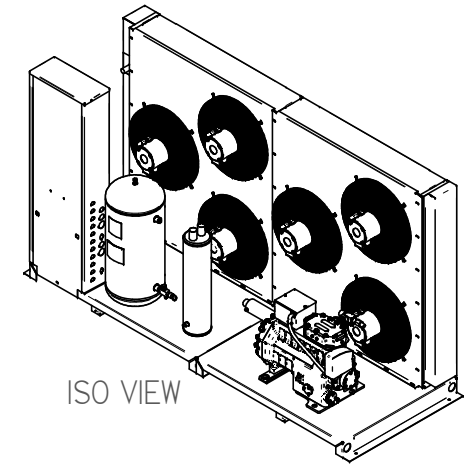
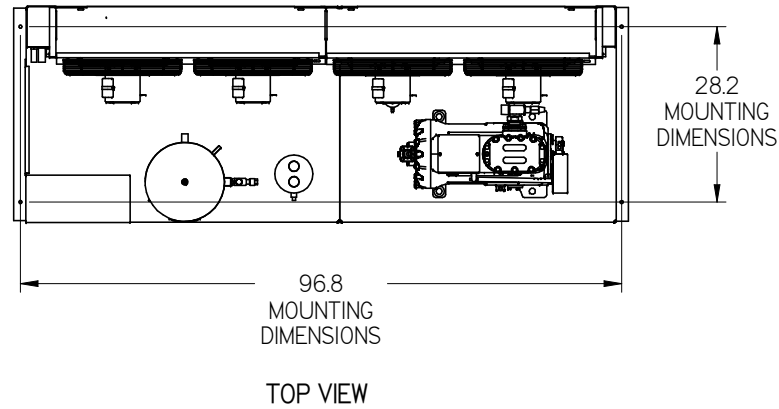


**EXTRA LARGE SIZE
INDOOR UNIT
STANDARD BASE
"HNSx-xxxxxxx-xx-A"
WEIGHT: 1,575 LBS.**



NOTES:

1. IT IS THE RESPONSIBILITY OF THE INSTALLING CONTRACTOR TO ENSURE THAT THE FINAL EQUIPMENT INSTALLATION MEETS ALL APPLICABLE CODE REQUIREMENTS.
2. ILLUSTRATION SHOWN IS FOR GENERAL REPRESENTATION ONLY. ACTUAL PRODUCT WILL VARY DEPENDENT UPON APPLICATION.
3. OVERALL DIMENSIONS: 103 L X 34.8 W X 54.4 H.

INFORMATION SUBJECT TO CHANGE

DIMENSIONS ARE IN INCHES.
DATE DRAWN: 2017/09/14



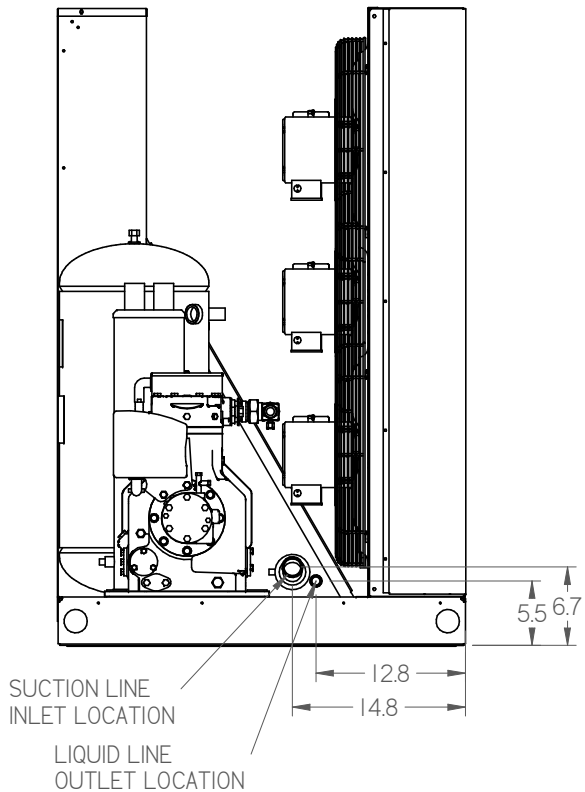
HUSSmann®

H SERIES EXTRA
LARGE INDOOR STD
BASE

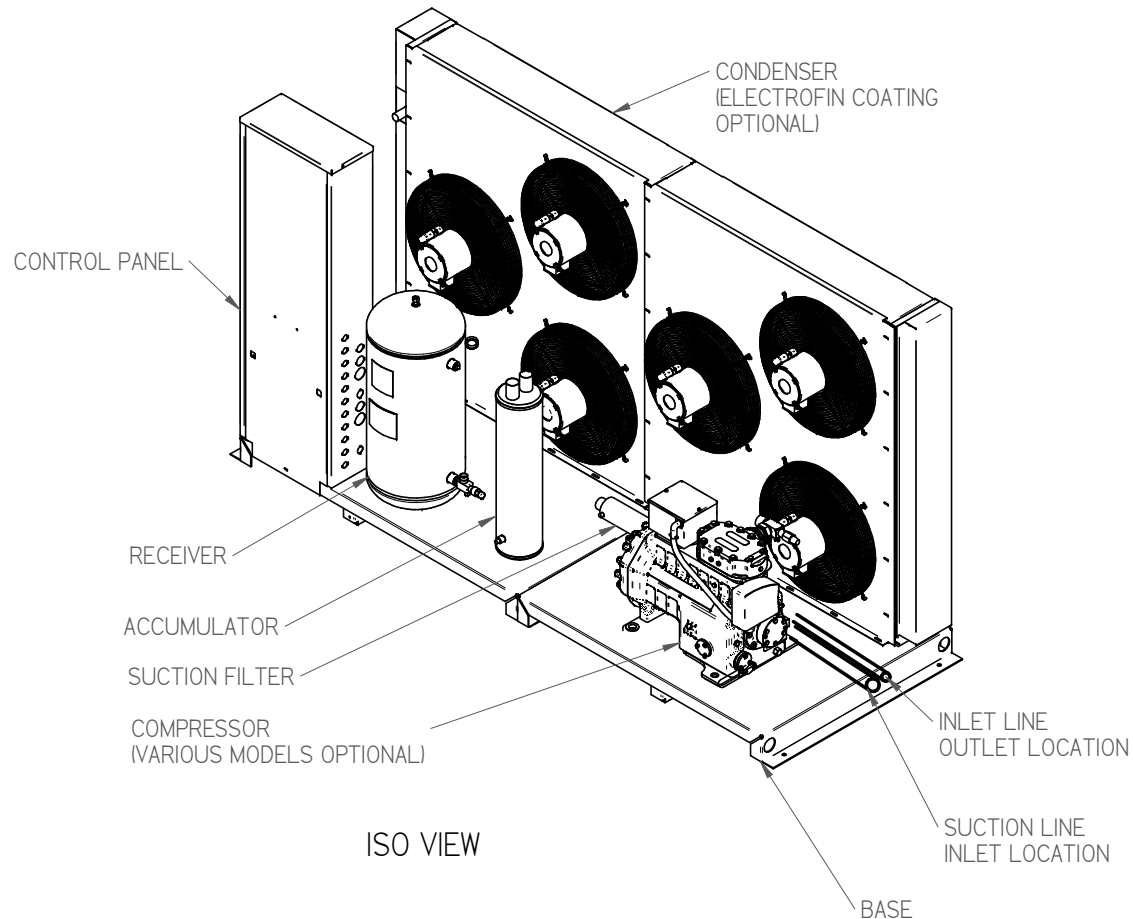
DOC PD-000000007 REV B

SHEET 1 OF 3

SWN10 SUBMITTAL SHEET SIZE D



PIPING CONNECTION LOCATION
OUT RIGHT SIDE OF UNIT



NOTES:

1. IT IS THE RESPONSIBILITY OF THE INSTALLING CONTRACTOR TO ENSURE THAT THE FINAL EQUIPMENT INSTALLATION MEETS ALL APPLICABLE CODE REQUIREMENTS.
2. ILLUSTRATION SHOWN IS FOR GENERAL REPRESENTATION ONLY. ACTUAL PRODUCT WILL VARY DEPENDENT UPON APPLICATION.
3. OVERALL DIMENSIONS: 103 L X 34.8 W X 54.4 H.

DIMENSIONS ARE IN INCHES.
DATE DRAWN: 2017/09/14



INFORMATION SUBJECT TO CHANGE

SHEET 2 OF 3

HUSSmann®

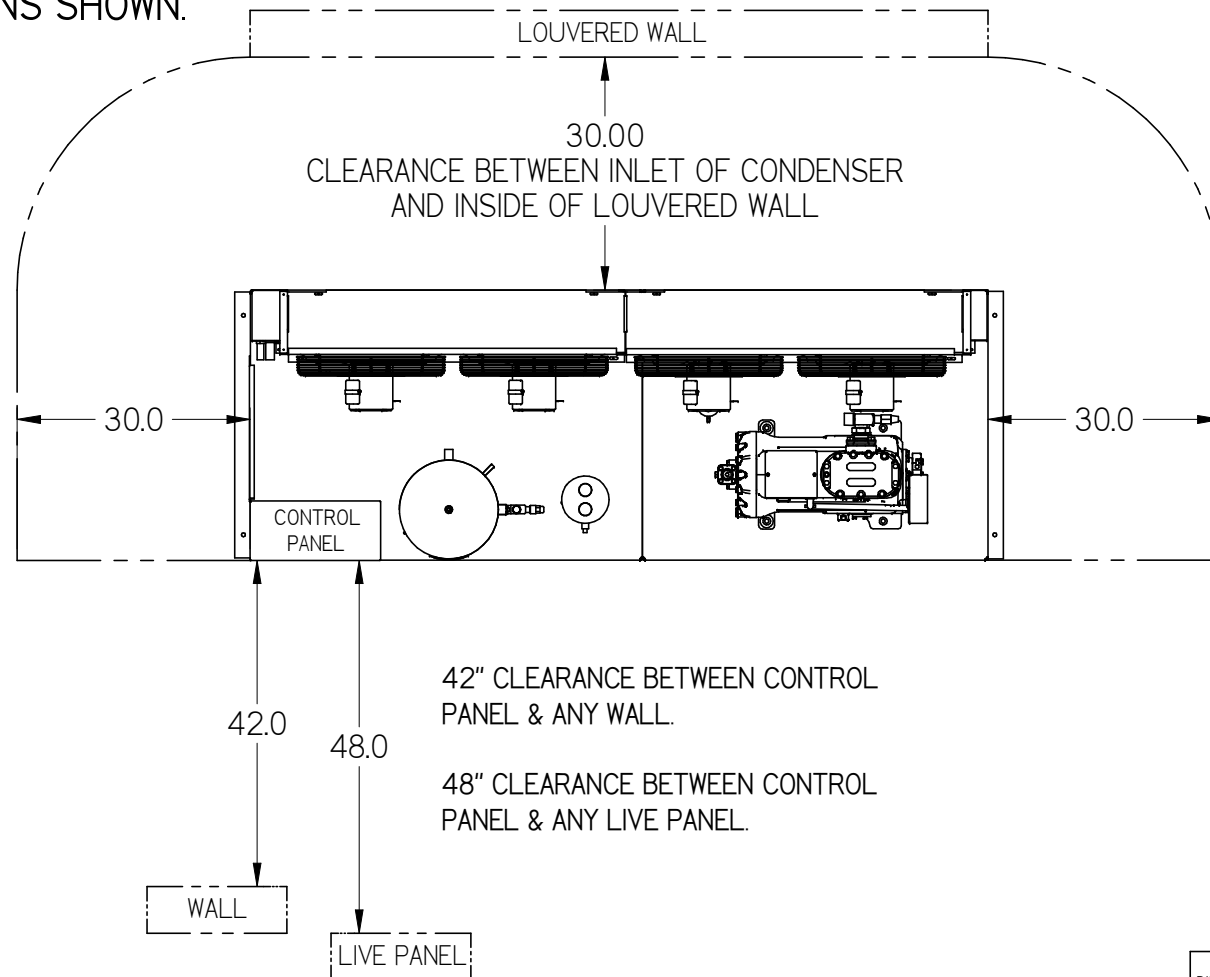
H SERIES EXTRA
LARGE INDOOR STD
BASE

DOC PD-000000007 REV B

SWIN10 SUBMITTAL SHEET SIZE D

MINIMUM CLEARANCE REQUIREMENTS:

ACTUAL CLEARANCE REQUIREMENTS ARE DEPENDENT UPON AUTHORITY HAVING JURISDICTION, AND MAY EXCEED DIMENSIONS SHOWN.



NOTES:

1. IT IS THE RESPONSIBILITY OF THE INSTALLING CONTRACTOR TO ENSURE THAT THE FINAL EQUIPMENT INSTALLATION MEETS ALL APPLICABLE CODE REQUIREMENTS.
2. ILLUSTRATION SHOWN IS FOR GENERAL REPRESENTATION ONLY. ACTUAL PRODUCT WILL VARY DEPENDENT UPON APPLICATION.
3. OVERALL DIMENSIONS: 103 L X 34.8 W X 54.4 H.

DIMENSIONS ARE IN INCHES.
DATE DRAWN: 2017/09/14



HUSSmann®	
H SERIES EXTRA	
LARGE INDOOR STD	
BASE	
DOC	REV
PD-000000007	B

INFORMATION SUBJECT TO CHANGE

SHEET 3 OF 3

SMV10 SUBMITTAL SHEET SIZE D