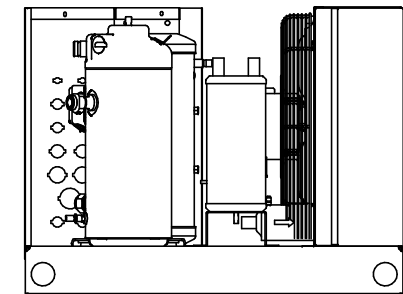
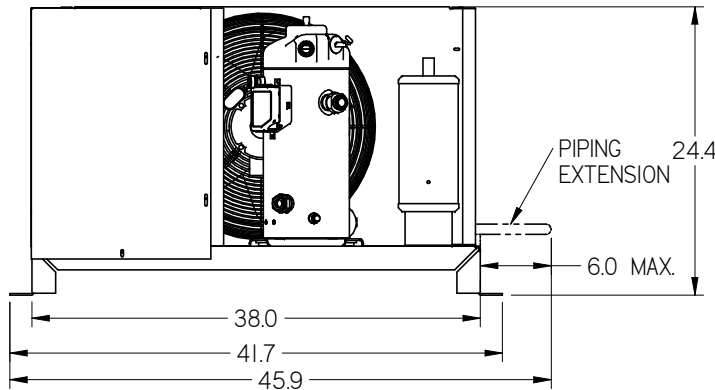
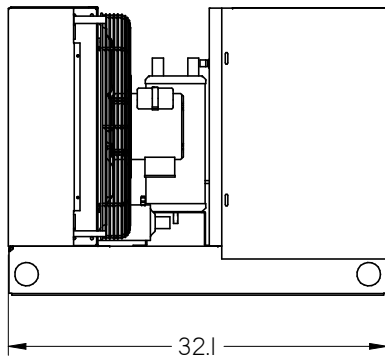
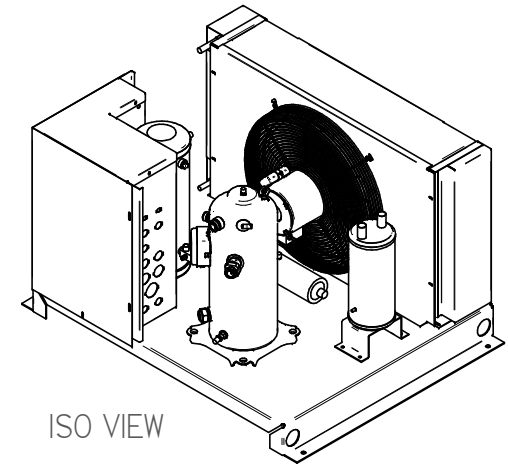
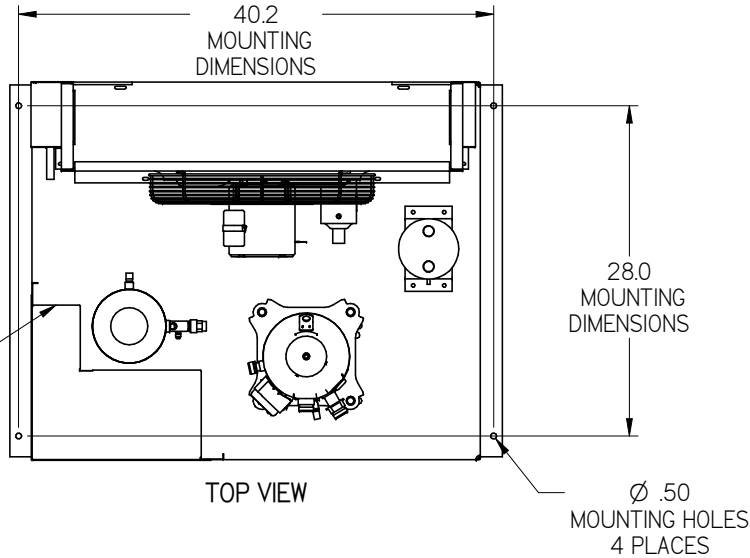


**SMALL SIZE
INDOOR UNIT
STANDARD BASE
"HNSx-xxxxxxx-xx-A"
WEIGHT : 400 LBS.**

MAIN POWER
ELECTRICAL
CONNECTION
IN REAR OF
CONTROL PANEL



NOTES:

1. IT IS THE RESPONSIBILITY OF THE INSTALLING CONTRACTOR TO ENSURE THAT THE FINAL EQUIPMENT INSTALLATION MEETS ALL APPLICABLE CODE REQUIREMENTS.
2. ILLUSTRATION SHOWN IS FOR GENERAL REPRESENTATION ONLY. ACTUAL PRODUCT WILL VARY DEPENDENT UPON APPLICATION.
3. OVERALL DIMENSIONS: 45.9 L X 32.1 W X 24.4 H.

INFORMATION SUBJECT TO CHANGE

DIMENSIONS ARE IN INCHES.
DATE DRAWN: 2017/09/14



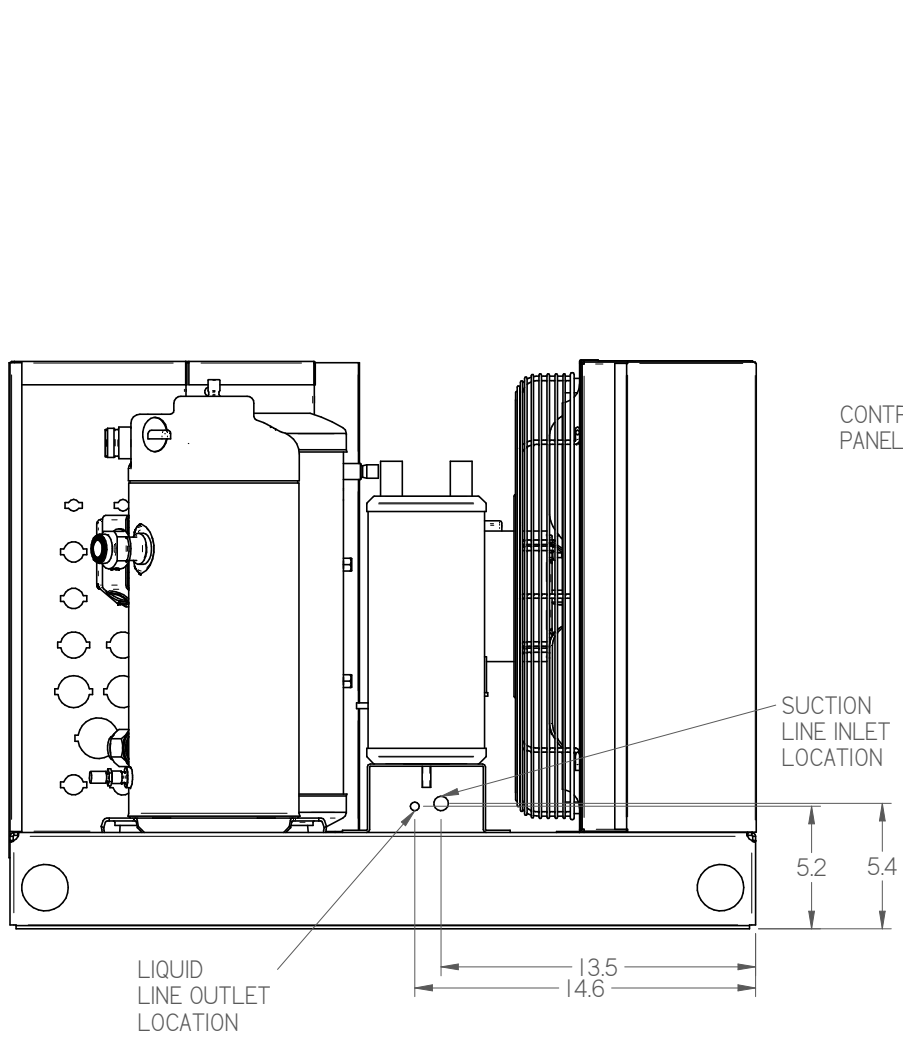
HUSSmann®

H SERIES SMALL
INDOOR STD BASE

DOC PD-000000004 REV B

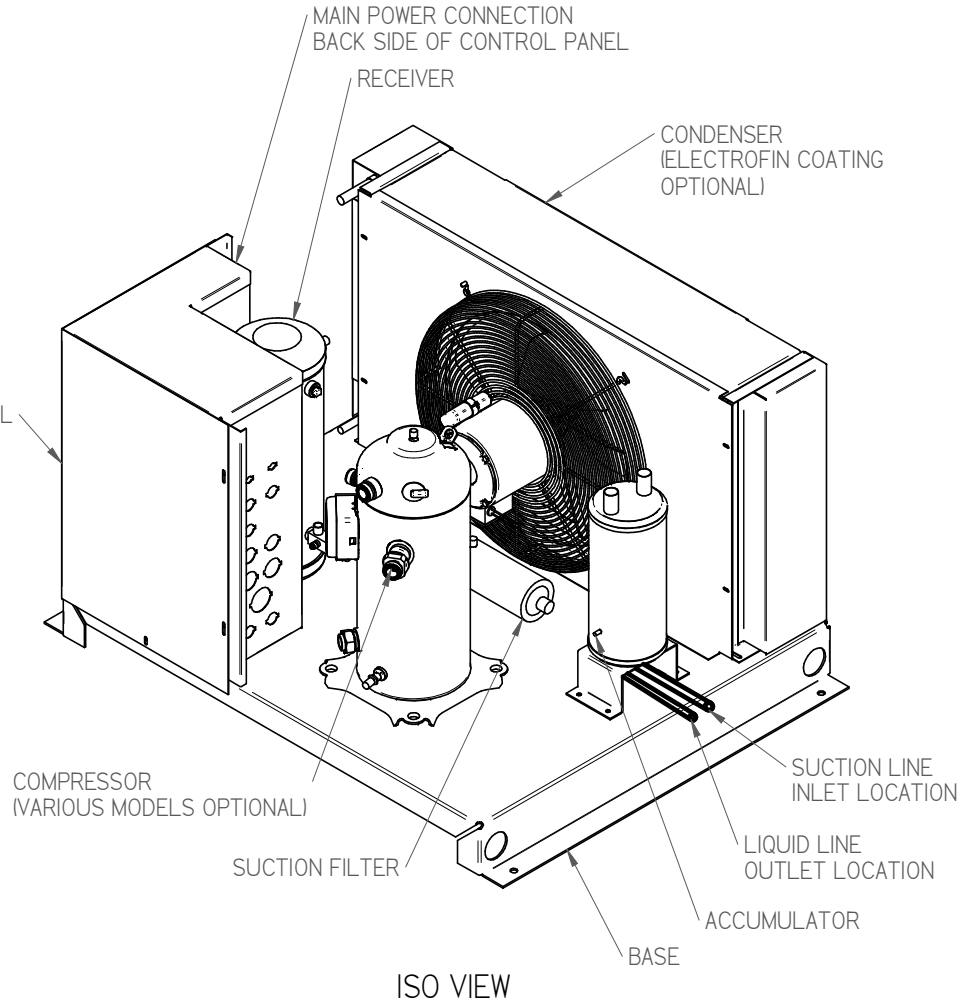
SHEET 1 OF 3


SWN10 SUBMITTAL SHEET SIZE D



PIPING CONNECTION LOCATION
OUT RIGHT SIDE OF UNIT

- NOTES:
1. IT IS THE RESPONSIBILITY OF THE INSTALLING CONTRACTOR TO ENSURE THAT THE FINAL EQUIPMENT INSTALLATION MEETS ALL APPLICABLE CODE REQUIREMENTS.
 2. ILLUSTRATION SHOWN IS FOR GENERAL REPRESENTATION ONLY. ACTUAL PRODUCT WILL VARY DEPENDENT UPON APPLICATION.
 3. OVERALL DIMENSIONS: 45.9 L X 32.1 W X 24.4 H.



DIMENSIONS ARE IN INCHES. DATE DRAWN: 2017/09/14		HUSSMANN®	
 THIRD ANGLE PROJECTION		H SERIES SMALL INDOOR STD BASE	
		DOC PD-000000004	REV B

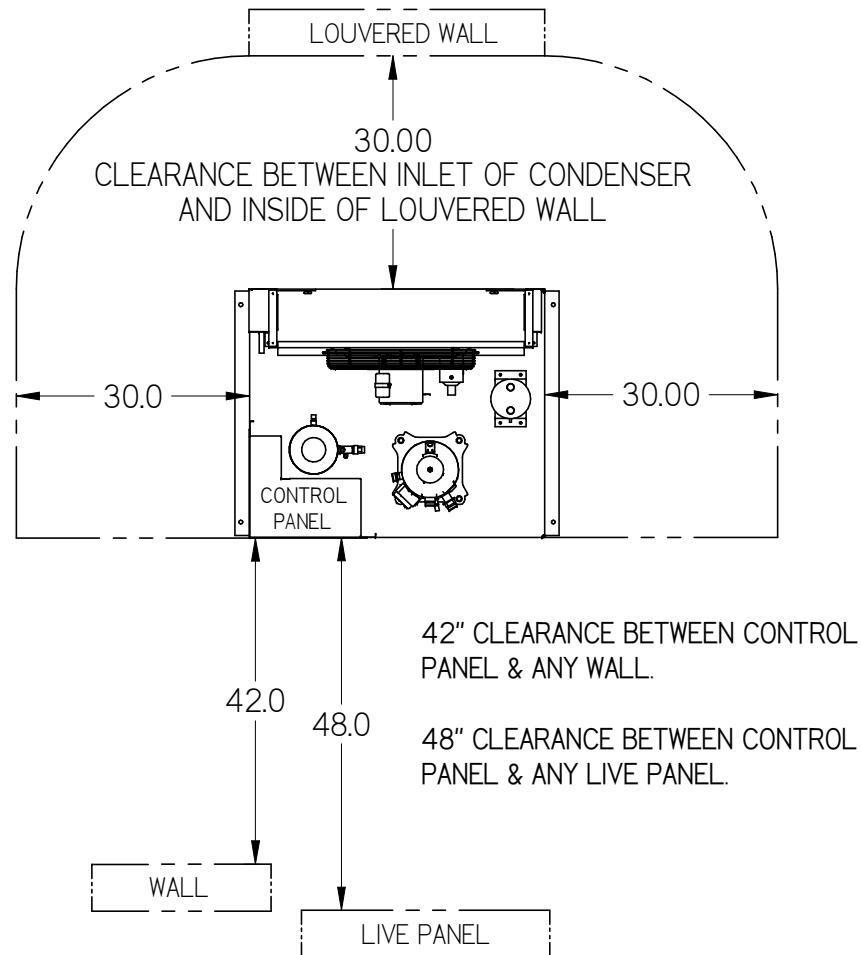
INFORMATION SUBJECT TO CHANGE

SHEET 2 OF 3

SHEET SUBMITTAL SHEET SIZE D

MINIMUM CLEARANCE REQUIREMENTS:

ACTUAL CLEARANCE REQUIREMENTS ARE DEPENDENT UPON AUTHORITY HAVING JURISDICTION, AND MAY EXCEED DIMENSIONS SHOWN.



NOTES:

1. IT IS THE RESPONSIBILITY OF THE INSTALLING CONTRACTOR TO ENSURE THAT THE FINAL EQUIPMENT INSTALLATION MEETS ALL APPLICABLE CODE REQUIREMENTS.
2. ILLUSTRATION SHOWN IS FOR GENERAL REPRESENTATION ONLY. ACTUAL PRODUCT WILL VARY DEPENDENT UPON APPLICATION.
3. OVERALL DIMENSIONS: 45.9 L X 32.1 W X 24.4 H.

DIMENSIONS ARE IN INCHES.
DATE DRAWN: 2017/09/14



HUSSmann®

H SERIES SMALL
INDOOR STD BASE

INFORMATION SUBJECT TO CHANGE

SHEET 3 OF 3

DOC PD-000000004 REV B

SHEET 3 OF 3 SUBMITTAL SHEET SIZE D