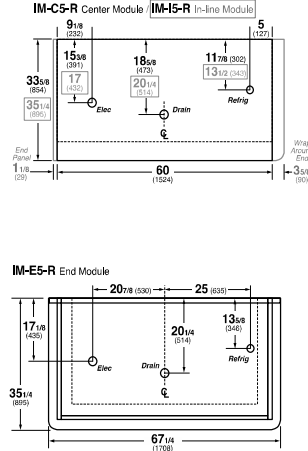
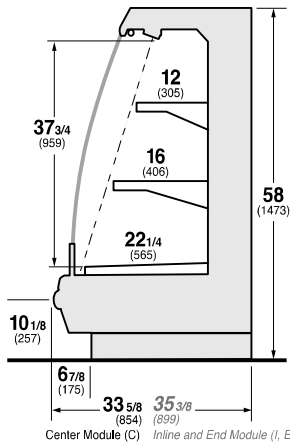




DOE 2017
 Energy Efficiency
 Compliant

Hussmann refrigerated merchandisers configured for sale for use in the United States meet or surpass the requirements of the DOE 2017 energy efficiency standards.



REFRIGERATION DATA:

CASE LENGTHS	CASE USAGE	CAPACITY *** (BTU/HR/FT)	TEMPERATURE (°F)		VELOCITY (FT/MIN)	
			RATING CONDITION	EVAPORATOR		DISCHARGE AIR ** (°F)
			AHRI 1200	AHRI 1200		
3', 4', 5', 6', 8', 10', 12'	FLORAL*	685	26	32~34	130~145	

CASE LENGTHS	EST. REFG. CHR. 404a (LBS)	24°F GLYCOL 4° RISE	
		GPM	PSI
3'	0.7	0.7	0.5
4'	1.0	1.0	1.1
5'	1.2	1.2	1.7
6'	1.4	1.4	1.0
8'	2.0	1.9	1.6
10'	2.5	2.3	2.4
12'	2.9	2.7	2.2

*APPROVED FOR NON-CRITICAL TEMP FLORAL PRODUCTS ONLY.

**FRONT DISCHARGE AIR MEASURED INSIDE AIR CURTAIN HONEYCOMB

***REFRIGERATION NOTES:

- 1) BTU'S DO NOT INCLUDE CANOPY LIGHTS.
- 2) AHRI 1200 RATING POINT FOR ENERGY CONSUMPTION COMPARISON ONLY.
- 3) USE DEW POINT FOR HIGH GLIDE REFRIGERANTS. CARE SHOULD BE TAKEN TO USE THE DEW POINT IN P/T TABLES FOR MEASURING AND ADJUSTING SUPERHEAT. ADJUST EVAPORATOR PRESSURE AS NEEDED TO MAINTAIN THE DISCHARGE AIR TEMPERATURE SHOWN.
- 4) RATING CONDITION IS NSF TYPE I, 75°F/55% RH

REFRIGERATION DATA CONTINUED:

ELEC. THERMOSTAT / AIR SENSOR SETTINGS			DEFROST TYPE	TIME (MIN)	DEFROST FREQUENCY (#/DAY)	TERM. TEMP (°F) COIL ONLY	DRIP TIME	DEFROST WATER (LBS/DAY/FT)
USAGE	CUT IN (°F)	CUT OUT (°F)						
FLORAL	33	30	OFF TIME	20	6	48	N/A	7

END PANEL WIDTH KEY		
# OF END PNLS	END PNL WIDTH (IN.)	TOTAL ADDED LENGTH (IN.)
1	1.125	1.125
2	1.125	2.25

ELECTRICAL DATA:

STANDARD FANS, HEATERS, LED LIGHTS (115 VOLT)

CASE LENGTH	EVAPORATOR FANS					CANOPY LIGHTS LED		LED SHELF LIGHTS		MAX. LED LOAD (W/ ALL OPTIONS)		ANTI-SWEAT HEATERS (ON FAN CIRCUIT)		CONVENIENCE OUTLETS (OPTIONAL)		
	# OF EVAP FANS	BLADE DIA. (IN.)	BLADE PITCH (°)	AMPS	WATTS	AMPS	WATTS	AMPS	WATTS	AMPS	WATTS	AMPS	WATTS	# OUTLETS	VOLTS	AMPS
3'	1	8	25	0.3	8	0.17	19	N/A	N/A	0.17	19	N/A	N/A	N/A	N/A	N/A
4'	1	8	25	0.3	8	0.23	27	N/A	N/A	0.23	27	N/A	N/A	N/A	N/A	N/A
5'	1	8	30	0.3	8	0.30	34	N/A	N/A	0.30	34	N/A	N/A	N/A	N/A	N/A
6'	2	8	25	0.6	16	0.34	39	N/A	N/A	0.34	39	N/A	N/A	N/A	N/A	N/A
8'	2	8	25	0.6	16	0.47	54	N/A	N/A	0.47	54	N/A	N/A	N/A	N/A	N/A
10'	2	8	30	0.6	16	0.59	68	N/A	N/A	0.59	68	N/A	N/A	N/A	N/A	N/A
12'	3	8	25	0.9	24	0.70	81	N/A	N/A	0.70	81	N/A	N/A	N/A	N/A	N/A

OPTIONAL HIGH OUTPUT LED LIGHTS (115 VOLT)

CASE LENGTH	CANOPY LIGHTS H.O. LED		SHELF LIGHTS H.O. LED		MAX. H.O. LED LOAD	
	AMPS	WATTS	AMPS	WATTS	AMPS	WATTS
3'	0.21	24	N/A	N/A	0.21	24
4'	0.28	32	N/A	N/A	0.28	32
5'	0.35	40	N/A	N/A	0.35	40
6'	0.41	47	N/A	N/A	0.41	47
8'	0.56	64	N/A	N/A	0.56	64
10'	0.70	81	N/A	N/A	0.70	81
12'	0.83	96	N/A	N/A	0.83	96