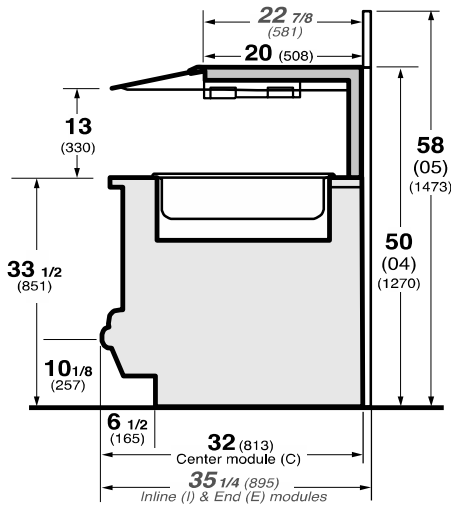
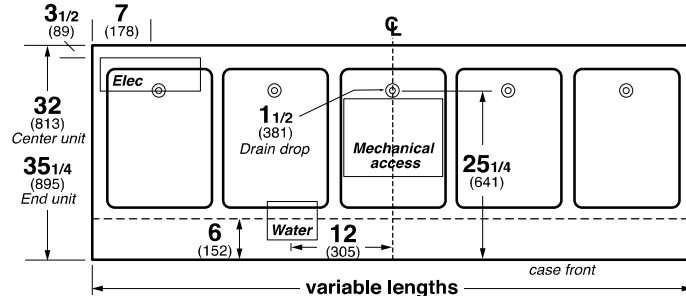




IM-05-FH Isla Counter w/Hot Well - 58"
IM-04-FH Isla Counter w/Hot Well - 50"



IM-FH Isla food counter module with hot wells



12 X 20 HOT WELL DATA 208V:

CASE LENGTH	MAX WELLS	HATCO HWBI-1 1 WELL 208 / 1 PHASE		HATCO HWBI-2 2 WELL 208 / 1 PHASE		HATCO HWBI-3 3 WELL 208 / 1 PHASE		HATCO HWBI-4 4 WELL 208 / 1 PHASE		HATCO HWBI-5 5 WELL 208 / 1 PHASE		HATCO HWBI-6 6 WELL 208 / 1 PHASE		MAX. TOTAL AMPS / WATTS
		AMPS	WATTS	AMPS	WATTS	AMPS	WATTS	AMPS	WATTS	AMPS	WATTS	AMPS	WATTS	
2'	1	5.8	1215											5.8 / 1215
3'	2			11.6	2415									11.6 / 2415
4'	3					17.4	3615							17.4 / 3615
5'	4							23.2	4815					23.2 / 4815
6'	5									28.9	6015			28.9 / 6015
8'	6											34.7	7215	34.7 / 7215
10'	8					(2X)	23.2	4815						46.4 / 9630
12'	10							(2X)	28.9	6015				57.8 / 12030

LEGEND
 N/A - NOT AVAILABLE
 TBD - TO BE DETERMINED
 SBO - SUPPLIED BY OTHERS

OVERHEAD HEATER DATA 208V: IM-04 & IM-05

CASE LENGTH	MAX WELLS	HATCO GRAML-36D 208 / 1 PHASE		HATCO GRAML-48D 208 / 1 PHASE		HATCO GRAML-60D 208 / 1 PHASE		HATCO GRAML-72D 208 / 1 PHASE		HATCO GRAML-96D 208 / 1 PHASE		HATCO GRAML-120D 208 / 1 PHASE		HATCO GRAML-144D 208 / 1 PHASE		MAX. TOTAL AMPS / WATTS
		AMPS	WATTS	AMPS	WATTS	AMPS	WATTS	AMPS	WATTS	AMPS	WATTS	AMPS	WATTS	AMPS	WATTS	
3'	2	10.5	2180													10.5 / 2180
4'	3			13.7	2840											13.7 / 2840
5'	4					17.8	3700									17.8 / 3700
6'	5							21.7	4510							21.7 / 4510
8'	6									29.7	5830					29.7 / 5830
10'	8											35.6	7400			35.6 / 7400
12'	10													43.4	9020	43.4 / 9020

END PANEL WIDTH KEY

# OF END PNLS	END PNL WIDTH (IN.)	TOTAL ADDED LENGTH (IN.)
1	1.125	1.125
2	1.125	2.25

12 X 20 HOT WELL DATA 240V:

CASE LENGTH	MAX WELLS	HATCO HWBI-1 1 WELL 240 / 1 PHASE		HATCO HWBI-2 2 WELL 240 / 1 PHASE		HATCO HWBI-3 3 WELL 240 / 1 PHASE		HATCO HWBI-4 4 WELL 240 / 1 PHASE		HATCO HWBI-5 5 WELL 240 / 1 PHASE		HATCO HWBI-6 6 WELL 240 / 1 PHASE		MAX. TOTAL AMPS / WATTS
		AMPS	WATTS	AMPS	WATTS	AMPS	WATTS	AMPS	WATTS	AMPS	WATTS	AMPS	WATTS	
2'	1	5.1	1215											5.1 / 1215
3'	2			10.1	2415									10.1 / 2415
4'	3					15.1	3615							15.1 / 3615
5'	4							20.1	4815					20.1 / 4815
6'	5									25.1	6015			25.1 / 6015
8'	6											30.1	7215	30.1 / 7215
10'	8					(2X)	20.1	4815						40.2 / 9630
12'	10							(2X)	25.1	6015				50.2 / 12030

OVERHEAD HEATER DATA 240V: IM-04 & IM-05

CASE LENGTH	MAX WELLS	HATCO GRAML-36D 240 / 1 PHASE		HATCO GRAML-48D 240 / 1 PHASE		HATCO GRAML-60D 240 / 1 PHASE		HATCO GRAML-72D 240 / 1 PHASE		HATCO GRAML-96D 240 / 1 PHASE		HATCO GRAML-120D 240 / 1 PHASE		HATCO GRAML-144D 240 / 1 PHASE		MAX. TOTAL AMPS / WATTS
		AMPS	WATTS	AMPS	WATTS	AMPS	WATTS	AMPS	WATTS	AMPS	WATTS	AMPS	WATTS	AMPS	WATTS	
3'	2	9.1	2180													9.1 / 2180
4'	3			11.8	2840											11.8 / 2840
5'	4					15.4	3700									15.4 / 3700
6'	5							18.8	4510							18.8 / 4510
8'	6									24.3	5830					24.3 / 5830
10'	8											30.8	7400			30.8 / 7400
12'	10													37.6	9020	37.6 / 9020

OPTIONS/NOTES:

- NOTE: SOUP WELLS AND HOT WELLS USE 1/2" DRAIN AND 1/2" WATER LINES
- NOTE: "AUTO-FILL" FOR HOT WELLS AND SOUP WELLS ARE OPTIONAL.
- NOTE: IF TOTAL AMPS ARE OVER 32 THEN CASE WILL BE 2-CIRCUITS, WELLS AND TOP HEATERS ARE SEPARATE.
- NOTE: LIGHTS ARE INCLUDED IN THE OVERHEAD HEATER DATA