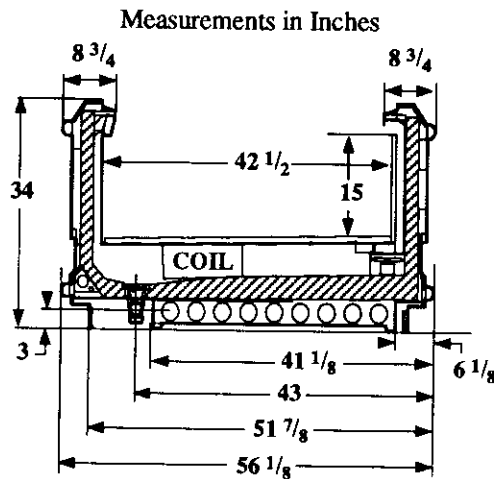


Single Level Intermediate Island Display

Vision NCN
Ice Cream

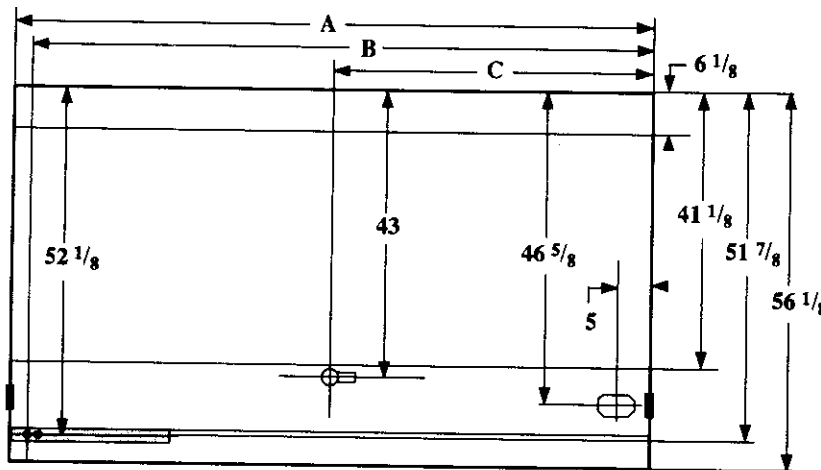
Refrigeration Data

Discharge Air °F	-20
Evaporator °F	-30
Unit Sizing °F	-33
<i>BTU/HR/FOOT</i>	
Parallel	490
Satellite	510
Conventional	565



Defrost Data

Frequency Hrs	24
<i>ELECTRIC</i>	
Temp Term °F	52
Failsafe Min	60
<i>REVERSE AIR</i>	
Temp Term °F	48
Failsafe Min	90
<i>GAS</i>	
Duration Min	24
<i>OFFTIME</i>	
Duration Min	NA



Conventional Controls

Low Pressure Backup Control	
CI/CO (PSIG)	
R-22 7/0	R-502 7/0

Indoor Condenser only, Pressure	
Defrost Termination (PSIG)	
R-22 NA	R-502 NA

Physical Data

Merchandiser	
Drip Pipe (ins)	1 1/2
Liquid Line (ins)	3/8
Suction Line (ins)	7/8

Evaporator Estimated Charge		
Length	R-22	R-502
	(lbs)	(lbs)
8	17	13
12	21	19

Length Added to Lineup by	
Ends and Partitions	
Each End (ins)	1 1/2
Each Insulated	
Partition (ins)	1 1/2

Electrical Service	Dimension	8' Case	12' Case
Waste Outlet	A	96 1/4	144 3/8
Refrigeration Outlet	B	93 5/8	141 3/4
Passageway Port	C	48 1/8	72 1/4

Vision NCN Ice Cream

Electrical Data

Merchandiser	8Ft	12Ft		
Number of Fans - Evaporator	2	3		
	Amperes		Watts	
Merchandiser	8Ft	12Ft	8Ft	12Ft
Fans				
Standaard	1.20	1.80	80	120
Energy Efficient	0.40	0.60	40	60
Reverse Air	0.62	0.93	60	90
Constant on Anti-sweat Heaters	0.70	1.00	84	120
Cycling Anti-sweat Heaters	NA			
Min. Circuit Ampacity				
With Standard Fans	2.10	3.00		
With Energy Efficient Fans	1.30	1.80		
With Reverse Air Fans	1.52	2.13		
Max. Over Current Protection	20	20		
Supplemental Gas Heaters	0.2	0.2	25	25
208V 1Φ Electric Defrost	10.5	15.7	2184	3266
120V 1Φ Supplemental Rev. Air	9.0	13.2	1080	1584

Standard Lighting

None

Revised 12-15-93