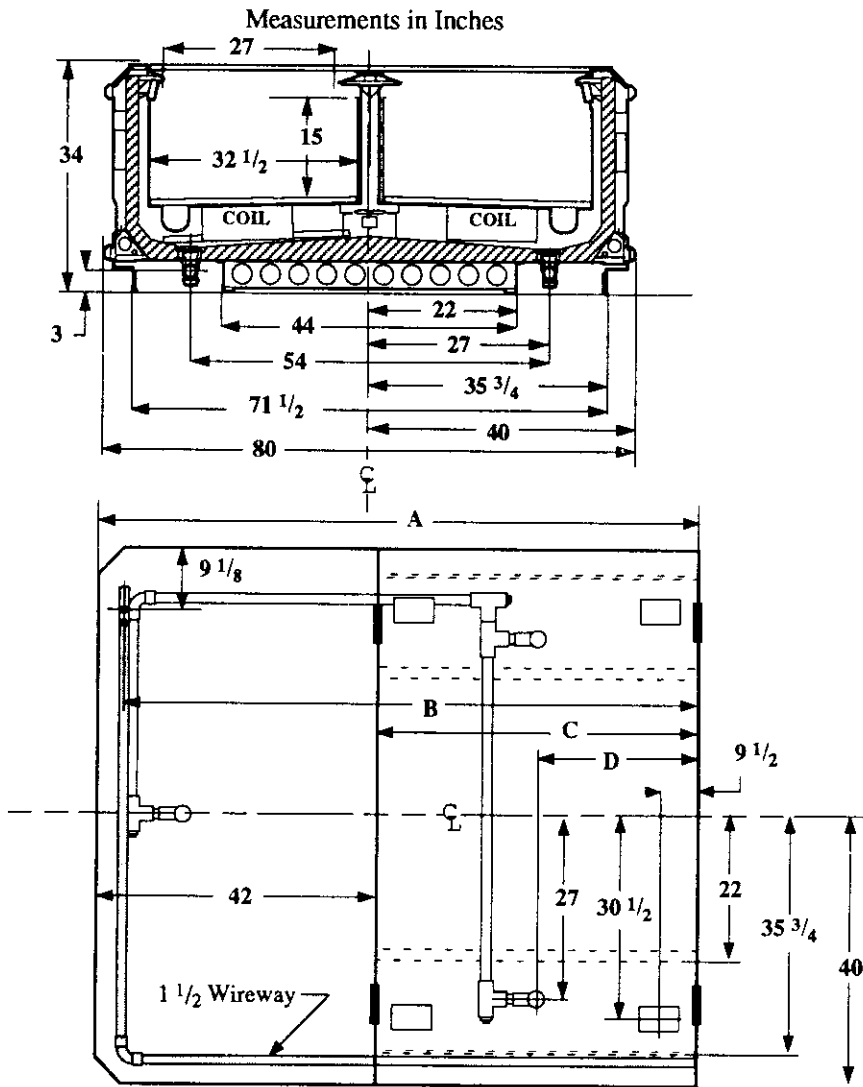


Single Level Wide Island Display, End and Center Unitized

Vision NCWE
Ice Cream



- Electrical Service
- Waste Outlet
- Refrigeration Outlet
- Passageway Port

Dimension	90" Case	138" Case
A	90 1/4	138 3/8
B	86 1/4	134 3/8
C	48 1/4	96 3/8
D	24 1/8	48 1/4

Refrigeration Data

Discharge Air °F	-20	
Evaporator °F	-30	
Unit Sizing °F	-33	
<i>BTU/HR/CASE</i>		
	90	138
Parallel	5180	8140
Satellite	5390	8470
Conventional	5950	9350

Defrost Data

Frequency Hrs	24
<i>ELECTRIC</i>	
Temp Term °F	52
Failsafe Min	60
<i>REVERSE AIR</i>	
Temp Term °F	48
Failsafe Min	90
<i>GAS</i>	
Duration Min	24
<i>OFFTIME</i>	
Duration Min	NA

Conventional Controls

Low Pressure Backup Control	
CI/CO (PSIG)	
R-22 7/0	R-502 7/0
Indoor Condenser only, Pressure	
Defrost Termination (PSIG)	
R-22 NA	R-502 NA

Physical Data

Merchandise		
Drip Pipe (ins)	1 1/2	
Liquid Line (ins)	3/8	
Suction Line (ins)	7/8	
Evaporator Estimated Charge		
Length	R-22	R-502
	(lbs)	(lbs)
90	47	36
138	53	48

Length Added to Lineup by Ends and Partitions

Each End (ins)	1 1/2
Each Insulated	
Partition (ins)	1 1/2

Vision NCWE Ice Cream
--

Electrical Data
Merchandiser

Number of Fans - Evaporator

90In	138In
2	3

Merchandiser

Amperes	
90In	138In

Watts	
90In	138In

Fans

Standard

Energy Efficient

Reverse Air

Constant on Anti-sweat Heaters

Cycling Anti-sweat Heaters

Min. Circuit Ampacity

With Standard Fans

With Energy Efficient Fans

With Reverse Air Fans

Max. Over Current Protection

Supplemental Gas Heaters

208V 1Φ Electric Defrost

120V 1Φ Supplemental Rev. Air

1.20 1.80

0.40 0.60

0.62 0.93

3.30 5.50

1.4 2.9

4.70 7.50

3.90 6.30

4.12 6.63

20 20

0.5 0.5

13.1 21.5

11.4 18.7

80 120

40 60

60 90

396 660

168 348

60 60

2725 4472

1368 2248

Standard Lighting

None

Revised 12-15-93

HUSSMANN CORPORATION • BRIDGETON, MO 63044