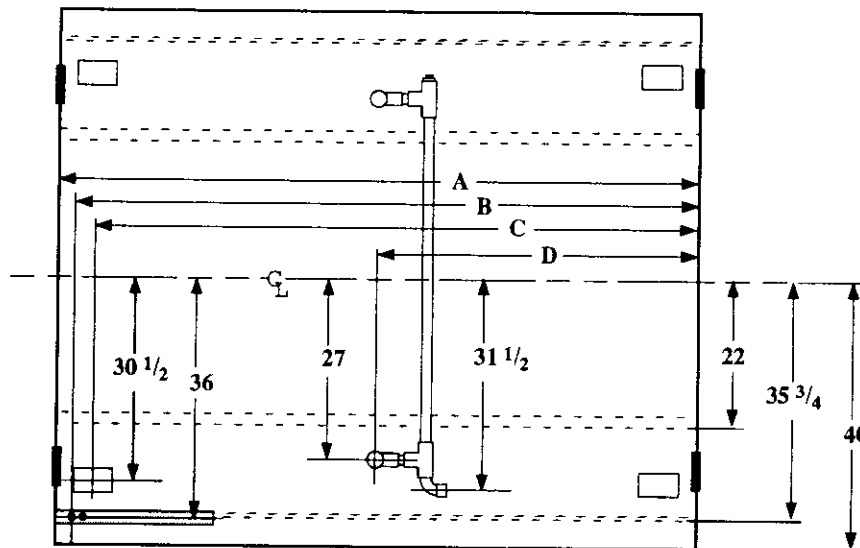
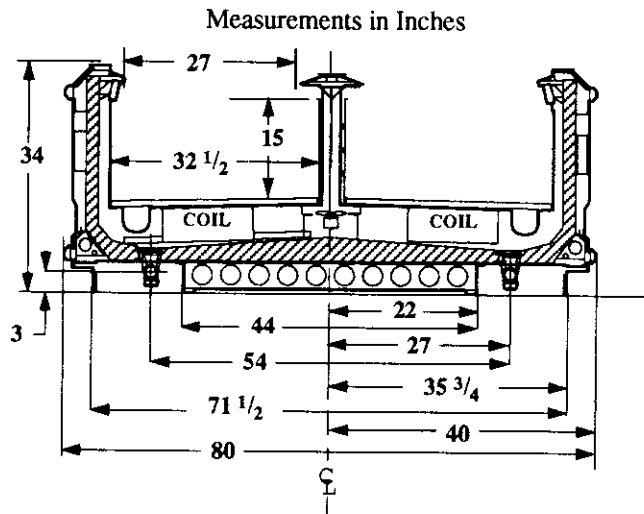


Single Level Wide Island Display

Vision NCW
Ice Cream



- Electrical Service
- Waste Outlet
- Refrigeration Outlet
- Passageway Port

Dimension	8' Case	12' Case
A	96 3/8	144 1/2
B	93 3/4	141 7/8
C	91 3/4	139 7/8
D	48 1/4	72 1/4

Refrigeration Data

Discharge Air °F	-20
Evaporator °F	-30
Unit Sizing °F	-33
<i>BTU/HR/FOOT*</i>	
Parallel	735
Satellite	765
Conventional	845

* Includes BOTH sides.

Defrost Data

Frequency Hrs	24
<i>ELECTRIC</i>	
Temp Term °F	52
Fallsafe Min	60
<i>REVERSE AIR</i>	
Temp Term °F	48
Fallsafe Min	90
<i>GAS</i>	
Duration Min	24
<i>OFFTIME</i>	
Duration Min	NA

Conventional Controls

Low Pressure Backup Control	
C/I/CO (PSIG)	
R-22 7/0	R-502 7/0

Indoor Condenser only, Pressure Defrost Termination (PSIG)	
R-22 NA	R-502 NA

Physical Data

Merchandiser	
Drip Pipe (ins)	1 1/2
Liquid Line (ins)	3/8
Suction Line (ins)	7/8

Evaporator Estimated Charge Length	R-22	R-502
	(lbs)	(lbs)
8	17	13
12	21	19

Length Added to Lineup by Ends and Partitions

Each End (ins)	1 1/2
Each Insulated Partition (ins)	1 1/2

Vision NCW Ice Cream

Electrical Data
Merchandiser

Number of Fans - Evaporator

8Ft	12Ft
2	3

Merchandiser	Amperes		Watts	
	8Ft	12Ft	8Ft	12Ft
Fans				
Standard	1.20	1.80	80	120
Energy Efficient	0.40	0.60	40	60
Reverse Air	0.62	0.93	60	90
Constant on Anti-sweat Heaters	1.60	2.40	192	288
Cycling Anti-sweat Heaters	NA			
Min. Circuit Ampacity				
With Standard Fans	3.00	4.40		
With Energy Efficient Fans	2.20	3.20		
With Reverse Air Fans	2.42	3.53		
Max. Over Current Protection	20	20		
Supplemental Gas Heaters	0.4	0.4	50	50
208V 1Φ Electric Defrost	16.4	24.2	3411	5034
120V 1Φ Supplemental Rev. Air	14.2	21.0	1704	2520

Standard Lighting

None

Revised 12-15-93